

EEL-S4



Bansbach
easylift

EEL-S4 Battery Based Actuator Control System

Features:

- 4-channel fully programmable controller
- Battery powered for mobile use
- 24VDC NiMH or Li-Ion replaceable battery
- Patented battery system
- Customized colors and foil design
- Wired handset
- Adjustable soft- start and stop
- Adjustable current limit in and out
- Adjustable calibration speed and current
- Adjustable virtual min/max-position
- Individual or synchronous operation for drive 2-3-4 or 2+2 actuator
- Audible and visual status signal

Technical Data

- Supply: 24VDC NiMH or Li-Ion battery
- Idle current: < 5mA
- Current limit: 8A/ch max. total 12A
- Current trip delay: 30ms
- Ramps: 0-3 sec
- Operating temp.: +5° - +40°C
- Connector type: Molex Mini-Fit 6 pin
- Weight
 - Control Box: 430g
 - NiMH Battery Charger: 430g
 - Li-Ion Battery Charger: 410g
 - Battery: 530g (Li-Ion: 400g)
- Battery Capacity:
 - NiMH: 1400m Ah
 - Li-Ion: 2100m Ah

The easyE S4 system is a versatile solution for control of electric actuators. The unique design, strong power supply system and the option of controlling multiple actuators makes the S4 system attractive for use in various applications.

The S4 system consists of:

- Control Box
- Handset
- Battery
- Battery charger

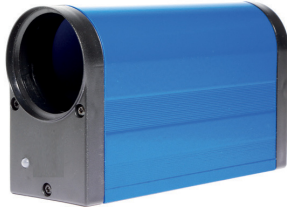
The S4 concept is designed for optimal flexibility making configuration, programming and installation very easy. Additionally, service and replacement of e.g. batteries are extremely easy with the patented magnetic principle. No tools are required.

The S4 Control Box is designed to handle up to four actuators in groups, synchronous or individually. It is controlled with a wired handset, which can be delivered in five different button layouts depending on customer needs. Furthermore, the S4 can be equipped with emergency stop.

The S4 system contains a rechargeable 24VDC NiMH or Li-Ion battery, enabling the actuator solution to be fully mobile.

Standard S4 solution includes IP50 protection with IP65 protection available.

System Components



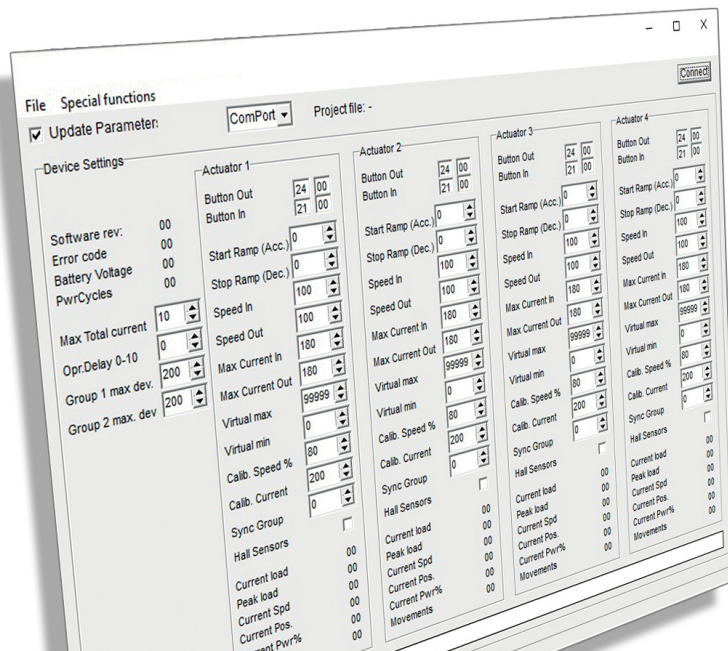
S4 Control Box



Handset



Battery



Configuration Tool

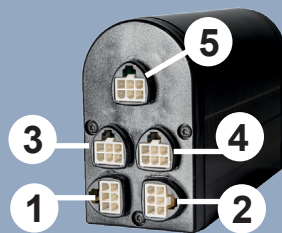


Battery charger



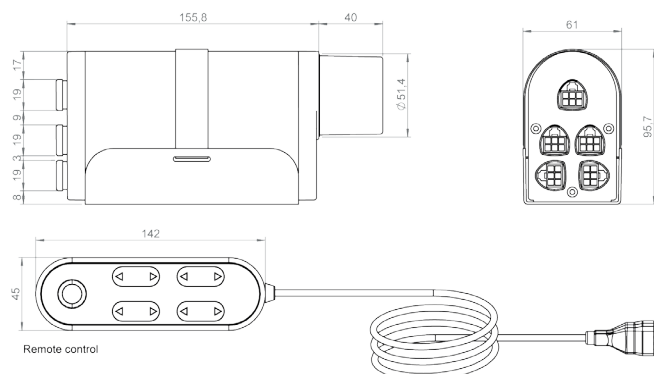
Bracket

Electrical connections



- 1 Actuator 1
- 2 Actuator 2
- 3 Actuator 3
- 4 Actuator 4
- 5 Handset, Power, Emergency Stop

Mechanical Dimensions



The flyer is subject to technical alterations and printing mistakes.

Bansbach easylift GmbH

Barbarossastraße 8
D-73547 Lorch

Tel. +49 (0) 7172/9107-0
Fax +49 (0) 7172/9107-44

info@bansbach.de
www.bansbach.de

Bansbach
easylift

03/2018