

MINI BALL VALVES FOR PNEUMATICS AND INDUSTRIAL FLUIDS

SERIES 29

Tube external diameters: 4, 6 and 8mm
Threads: BSP (G1/8, G1/4, G3/8, G1/2, R1/8, R1/4)



The mini ball valves are used to open or close air or fluids in industrial applications characterised by extremely reduced spaces.

The miniaturised dimensions and light weight of Series 29 enable a quick installation at any point of the system, also thanks to the push-in connection or thread.
The design and materials used make this series particularly suitable for compressed air systems as well as hydraulic circuits and systems.

- Reduction in installation time
- Compact dimensions
- Cost effective solution
- Lightweight
- Maximum flow capability
- Easy-to-operate lever
- Usage with polymer tubing
- Versions available:
 - MINI
 - ECO
 - Butterfly
 - 3/2-way

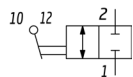
General Data

Function	2/2-way, 3/2-way with exhaust
Operation	90° lever rotation
Ports	G1/8, G1/4, G3/8, G1/2, R1/8, R1/4
Tube diameter	Ø 4, 6, 8 mm
Orifice diameter	6 mm (MINI version) 8 mm bis 10 mm (ECO, butterfly and 3/2-way with exhaust)
Operating pressure	Push-in: -0,9 ÷ 16 bar Modelli filettati: -0,9 ÷ 20 bar
Operating temperature	Push-in: -20°C ÷ 80°C Modelli filettati: -20°C ÷ 80°C
Materials	Valve body, rod, collet: brass; ball: nickel plated brass; ball seals: PTFE rod sealing ring: FKM; Lever: Glass charged PA66
Surface finishing	Chrome plated, sandblasted and chrome plated (only butterfly version)
Medium	Compressed air, inert gases, water, oil - other on demand

MINI BALL VALVES FOR PNEUMATICS AND INDUSTRIAL FLUIDS
SERIES 29 - DIMENSIONS

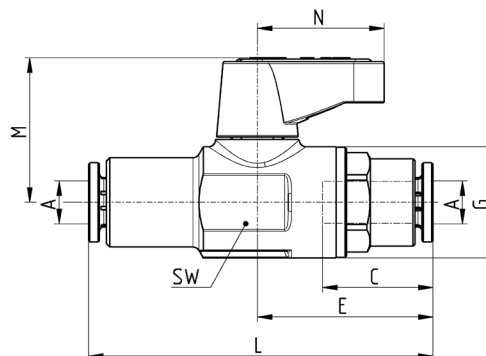
Mini ball valves, MINI version - Mod. 2948

2/2 in-line with Push-in Collet



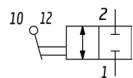
VN39

Mod.	A	dn	C	E	G	L	M	N	SW
2948 4	4	6	14	22,5	16	45	21	18,5	14
2948 6	6	6	16	25,5	16	50	21	18,5	14
2948 8	8	6	17,5	27	16	53	21	18,5	14



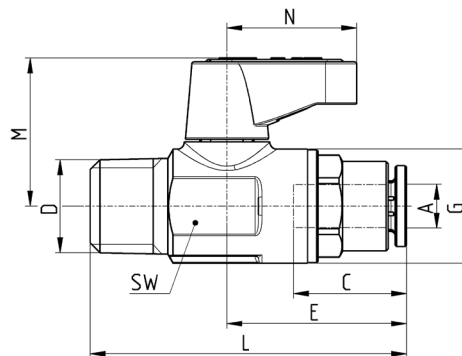
Mini ball valves, MINI version - Mod. 2947

2/2 in-line with Push-in Collet, Male BSPT Threads



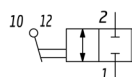
VN39

Mod.	A	D	dn	C	E	G	L	M	N	SW
2947 1/8-4	4	R1/8	6	14	22,5	16	39,5	21	18,5	14
2947 1/8-6	6	R1/8	6	16	25,5	16	42,5	21	18,5	14
2947 1/8-8	8	R1/8	6	17,5	27	16	44	21	18,5	14
2947 1/4-4	4	R1/4	6	14	22,5	16	42	21	18,5	14
2947 1/4-6	6	R1/4	6	16	25,5	16	45	21	18,5	14
2947 1/4-8	8	R1/4	6	17,5	27	16	46,5	21	18,5	14



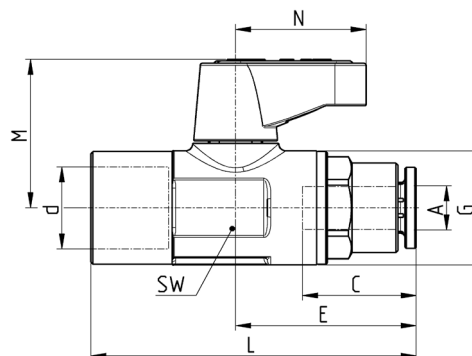
Mini ball valves, MINI version - Mod. 2946

2/2 in-line with Push-in Collet, Female BSPP Thread



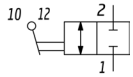
VN39

Mod.	A	D	dn	C	E	G	L	M	N	SW
2946 1/8-4	4	G1/8	6	14	22,5	16	41	21	18,5	14
2946 1/8-6	6	G1/8	6	16	25,5	16	44	21	18,5	14
2946 1/8-8	8	G1/8	6	17,5	27	16	45,5	21	18,5	14
2946 1/4-4	4	G1/4	6	14	22,5	16	43	21	18,5	14
2946 1/4-6	6	G1/4	6	16	25,5	16	46	21	18,5	14
2946 1/4-8	8	G1/4	6	17,5	27	16	47,5	21	18,5	14



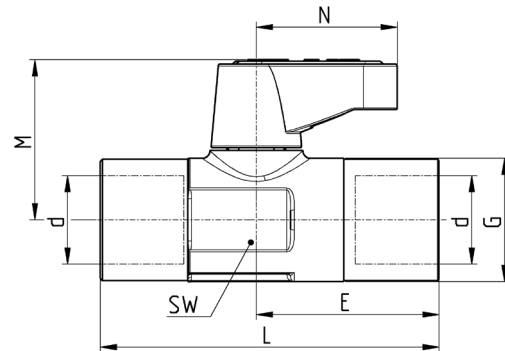
Mini ball valves, MINI version - Mod. 2943

2/2 in-line, Female-Female BSPP Threads

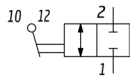


VN39

Mod.	D	dn	E	G	L	M	N	SW
2943 1/8	G1/8	6	21	16	39,5	21	18,5	14
2943 1/4	G1/4	6	24	16	44,5	21	18,5	14

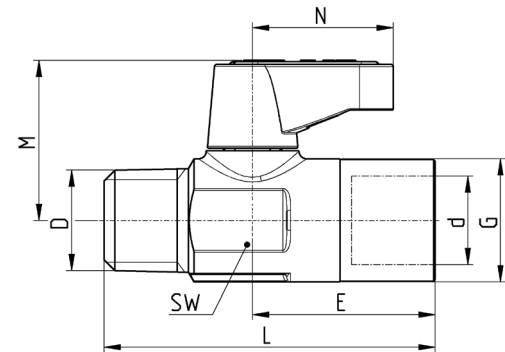

Mini ball valves, MINI version - Mod. 2944

2/2 in-line, Male BSPT-Female BSPP Threads

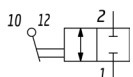


VN39

Mod.	D	D	dn	E	G	L	M	N	SW
2944 1/8-1/8	R1/8	R1/8	6	21	16	38	21	18,5	14
2944 1/4-1/4	R1/4	R1/4	6	24,5	16	43,5	21	18,5	14

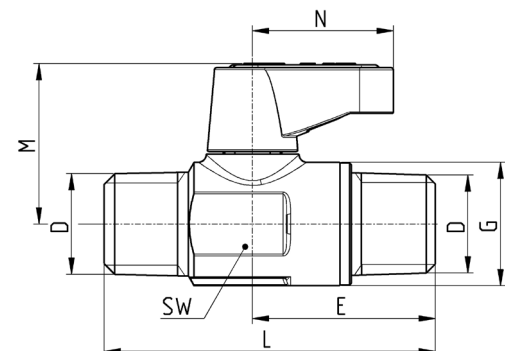

Mini ball valves, MINI version - Mod. 2945

2/2 in-line, Male BSPT Threads



VN39

Mod.	D	dn	E	G	L	M	N	SW
2945 1/8	R1/8	6	21	16	38,5	21	18,5	14
2945 1/4	R1/4	6	24	16	43,5	21	18,5	14



MINI BALL VALVES FOR PNEUMATICS AND INDUSTRIAL FLUIDS
SERIES 29 - ACCESSORIES

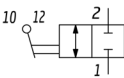
Colored Interchangeable Clips Mod. C29



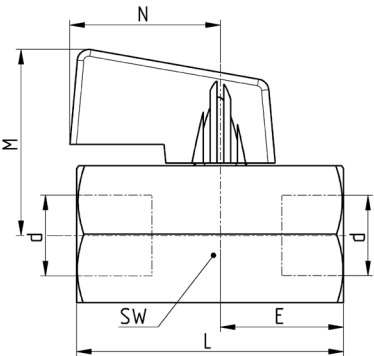
Mod.
C29-GREY
C29-RED
C29-BLUE

Mini ball valves, ECO version - Mod. 2953

2/2 in-line, Female-Female BSPP Threads



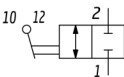
VN39



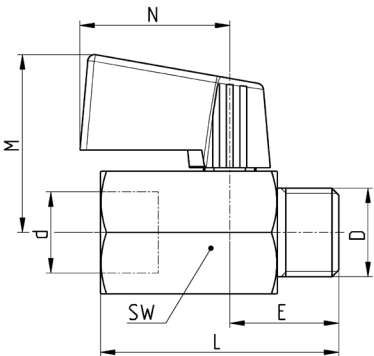
Mod.	D	dn	E	L	M	N	SW
2953 1/4	G1/4	8	18	39	27	22	20
2953 3/8	G3/8	8	21	42	27	22	20
2953 1/2	G1/2	10	23	47	29	22	24

Mini ball valves, ECO version - Mod. 2954

2/2 in-line, Male BSPP-Female BSPP Threads



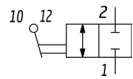
VN39



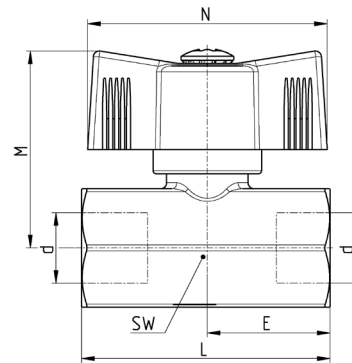
Mod.	D	D	dn	E	L	M	N	SW
2954 1/4-1/4	G1/4	G1/4	8	18	39	27	22	20
2954 3/8-3/8	G3/8	G3/8	8	19	40	27	22	20
2954 1/2-1/2	G1/2	G1/2	10	21	45	29	22	24

Mini ball valves, Butterfly version - Mod. 2963

2/2 in-line, Female-Female BSPP Threads



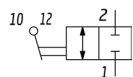
VN39



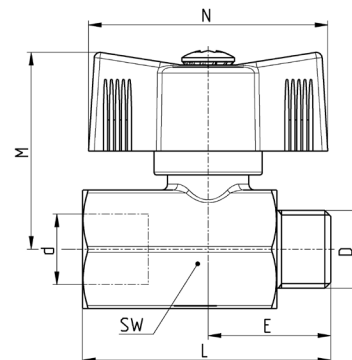
Mod.	D	dn	E	L	M	N	SW
2963 1/4	G1/4	8	21	41,5	33	40	20
2963 3/8	G3/8	8	21	41,5	33	40	20
2963 1/2	G1/2	10	24	47	34,5	40	24

Mini ball valves, Butterfly version - Mod. 2964

2/2 in-line, Male BSPP-Female BSPP Threads



VN39

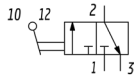
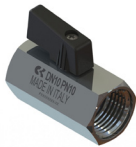


Mod.	D	D	dn	E	L	M	N	SW
2964 1/4-1/4	G1/4	G1/4	8	20,5	41,5	33	40	20
2964 3/8-3/8	G3/8	G3/8	8	20,5	41,5	33	40	20
2964 1/2-1/2	G1/2	G1/2	10	21	45	34,5	40	24

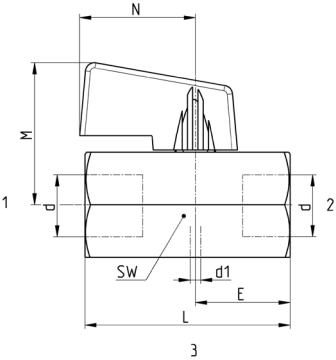
MINI BALL VALVES FOR PNEUMATICS AND INDUSTRIAL FLUIDS
SERIES 29 - DIMENSIONS

Mini ball valves, 3/2-way version - Mod. 2973

3/2 in-line, Female BSPP-Female BSPP
Threads



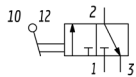
VN40



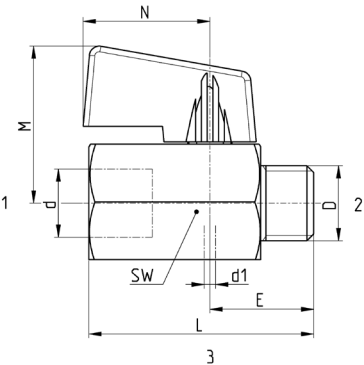
Mod.	D	dn	D1	E	L	M	N	SW
2973 1/4	G1/4	8	2	18	39	27	22	20
2973 3/8	G3/8	8	2	21	42	27	22	20
2973 1/2	G1/2	10	2	23	47	29	22	24

Mini ball valves, 3/2-way version - Mod. 2974

3/2 in-line, Male BSPP-Female BSPP
Threads



VN40



Mod.	D	D	dn	D1	E	L	M	N	SW
2974 1/4-1/4	G1/4	G1/4	8	2	18	39	27	22	20
2974 3/8-3/8	G3/8	G3/8	8	2	19	40	27	22	20
2974 1/2-1/2	G1/2	G1/2	10	2	21	45	29	22	24