

# easyE-60

**CAD-Files:**  
[www.cad.bansbach.de](http://www.cad.bansbach.de)

**Bansbach**  
easylift

## strong and still compact up to 10000N, 60mm diameter

### Speed and Force:

Gear ratio	D	E	F	G	H
easyE-60	24VDC power supply, permanent magnet motor				
Force (dyn. push and pull) [N]	1900	4300	6600	8100	10000
Speed at maximum load [mm/s]	26	12	8	6	5
Current at maximum load: 24VDC = 10A					

### Dimensions:



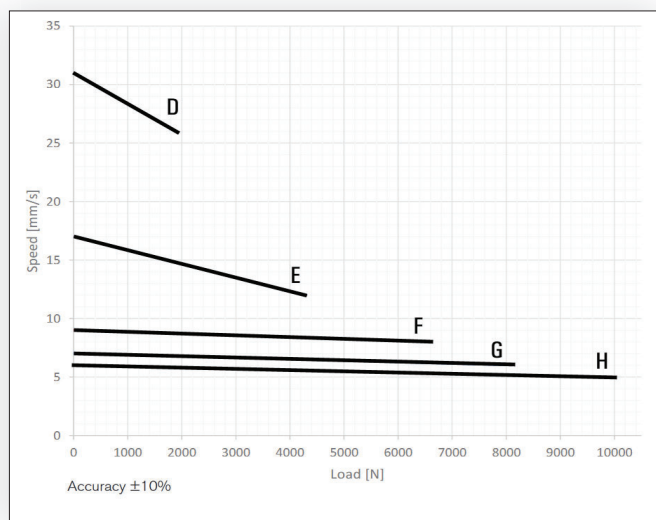
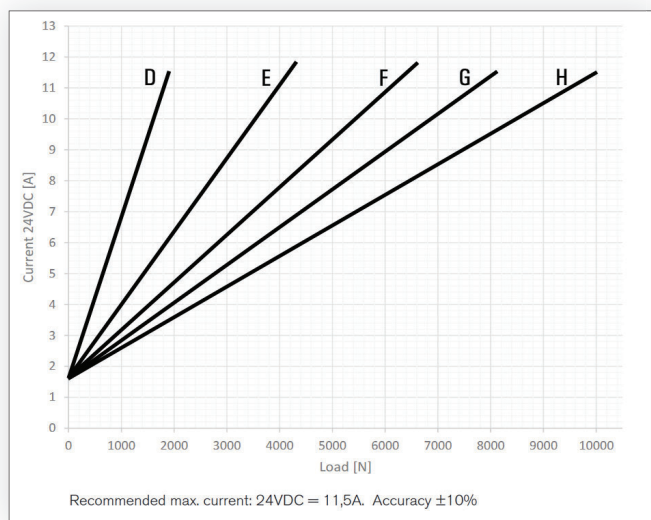
Axial backlash: +/- 0.5mm  
General dimensional variation: +/- 1mm

Standard	Hall	Harsh Environment	Emergency lowering/spline
stroke + 358	+15	+25	+31/+10

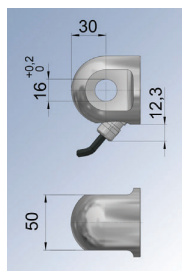
if stroke >400mm: EL+25mm (not Harsh-Environment-version)

## Features:

- Stroke length: 50, 100, 150, 200, 250, 300, 350, 400, 500 and 750mm (others on request)
- Cable: 1m, 2X1.3mm<sup>2</sup> (AWG16), Ø=6.4mm, black, Molex Mini-Fit Jr. 6 pin
- Bending radius: 6x cable diameter
- Materials: Motor and actuator tube are powder coated steel or stainless steel  
Piston rod is stainless steel  
Front and rear brackets are Aluminium or stainless steel
- Protection class: IP66 (standard), harsh environment (according to IP68 and IP69)
- Max. static load/  
Self locking force: easyE-60: Alu/AISI: 16800N  
Depending on stroke length for push-applications
- Temperature: -20°C to +50°C (easyE-60)  
Storage: -40°C to +70°C
- Duty cycle: Max. 10% or 2 minutes in use followed by 18 minutes rest

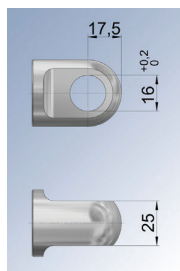


## Connecting parts:



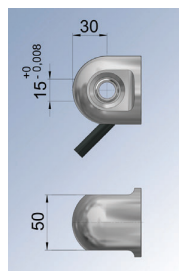
Code:  
A3M (Alu)  
C3M (Stainless)

Max. static load:  
16800N



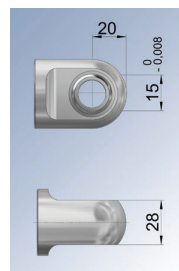
Code:  
A3K (Alu)  
C3K (Stainless)

Max. static load:  
16800N



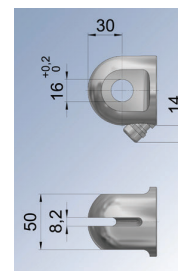
Code:  
E3M (Alu)  
J3M (Stainless)

Max. static load:  
11000N



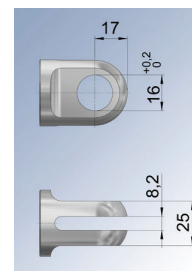
Code:  
E3K (Alu)  
J3K (Stainless)

Max. static load:  
11000N



Code:  
F3M (Alu)  
H3M (Stainless)

Max. static load:  
16800N



Code:  
F3K (Alu)  
H3K (Stainless)

Max. static load:  
16800N

The flyer is subject to technical alterations and printing mistakes.

## Bansbach easylift GmbH

Barbarossastraße 8  
D-73547 Lorch

Tel. +49 (0) 7172/9107-0  
Fax +49 (0) 7172/9107-44

info@bansbach.de  
www.bansbach.de

**Bansbach**  
*easylift*

12/2022