

70% less air consumption.

An eco-friendly, new type of precision regulator: the RPE Series.

Significant reduction in air consumption is achieved with the special structure (compared to CKD conventional products).

In addition, excellent control performance, high precision and compact size are also achieved.

Precise tension control, etc., can be used in various applications.

70% less air consumption

Air bleed is significantly reduced compared to CKD conventional products. (Comparing identical conditions at primary pressure 0.7 MPa)

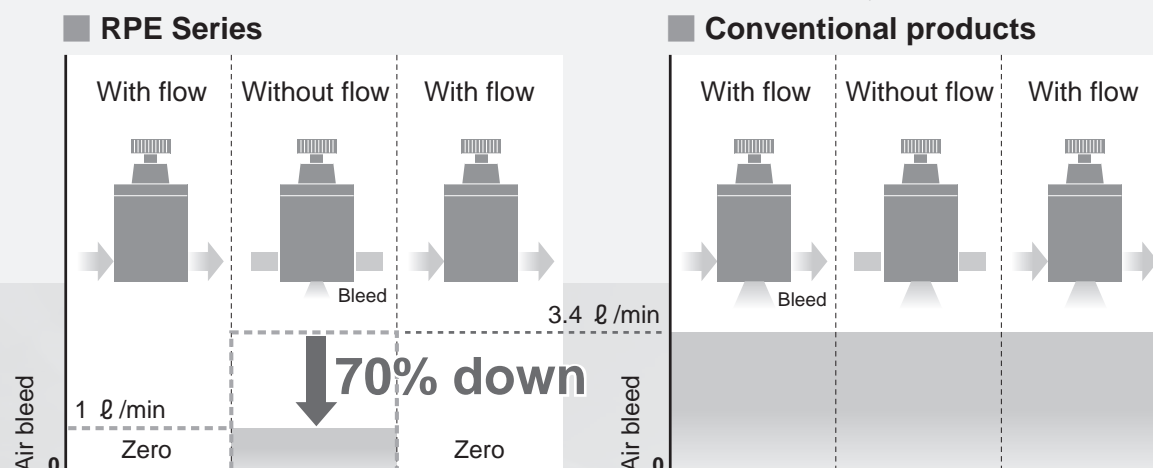


Image diagram

Bleed position differs from the actual.

High-precision pressure control

Repeatability: Within $\pm 0.5\%$ of full scale

Sensitivity: Within 0.2% of full scale

Compact 42 mm/lightweight 250 g

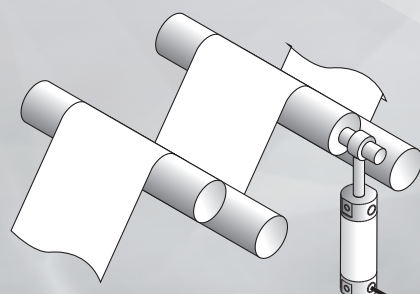
Aluminum materials used, compact/lightweight design.

Ozone-proof materials are used as standard in movable parts

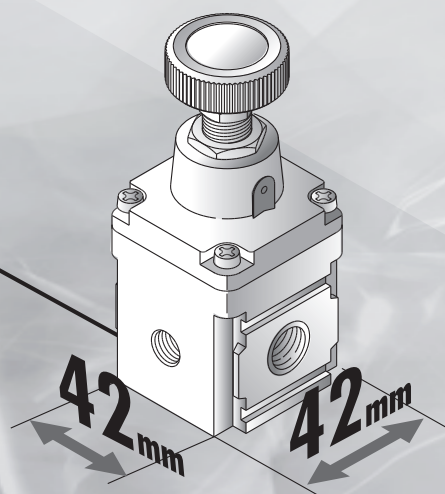
Module type

Can be connected with C1000 Series filter and oil mist filter.

Fluid passage section grease-free specifications



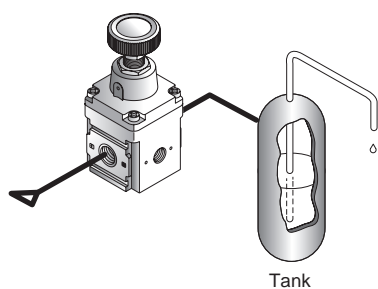
Tension control



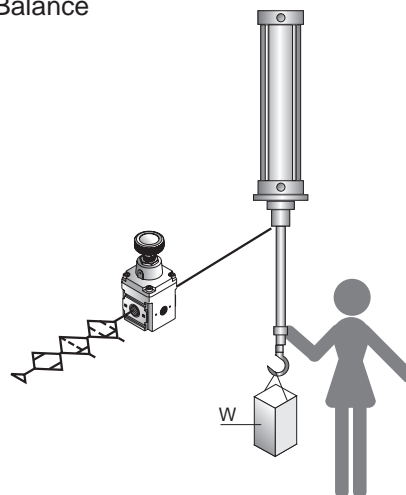
RPE Series

Applications

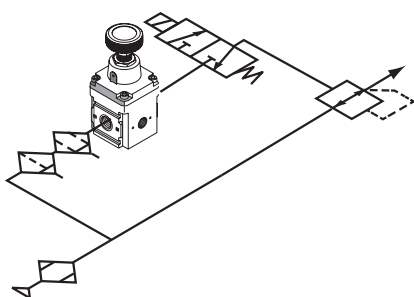
Fluid discharge control



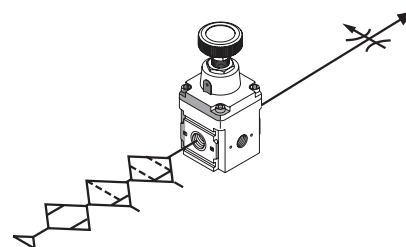
Balance



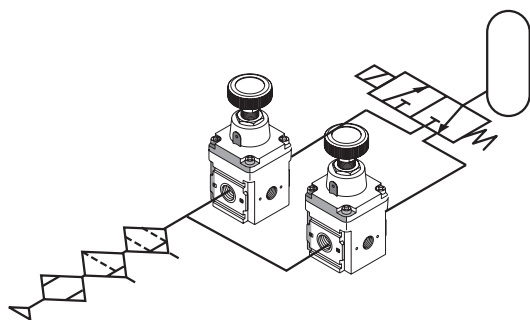
Pilot pressure control



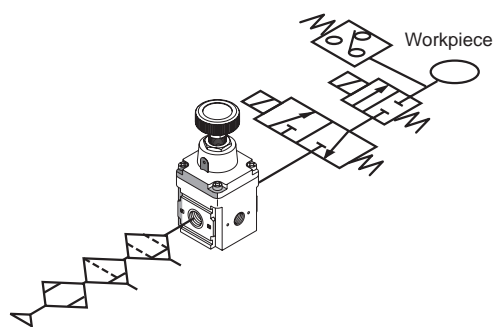
Very low pressure blow



Quick pressure regulation of tank pressure



Leakage test



F.R.L.
F.R.
F (Filtr)
R (Reg)
L (Lub)
Drain Separ
Mech Press SW
Res press exh valve
SlowStart
Anti-bac/Bac-remove Filt
Film Resist FR
Oil-ProhR
Med Press FR
No Cu/ PTFE FRL
Outdrs FRL
Adapter Joiner Press Gauge
CompFRL
LgFRL
PrecsR
VacF/R
Clean FR
ElecPneuR
AirBoost
Speed Ctrl
Silncr
CheckV/ other
Fit/Tube
Nozzle
Air Unit
PresCompn
Electro Press SW
ContactSW
AirSens
PresSW Cool
Air Flo Sens/Ctrl
WaterRISens
TotAirSys (Total Air)
TotAirSys (Gamma)
Gas generator
RefrDry
DesicDry
HiPolymDry
MainFiltr
Dischrg etc
Ending