



LINEAR ACTUATOR

JC35L35

# JC35L35 Linear Actuator

1. JC35L35 is a quick release actuator with low noise and high speed. The JC35L35 is characterized by low noise, short installation moment, and the highest IP grade can reach IPX6.
2. Suitable for medical beds, nursing beds and other medical equipment.



**Stock Code:** JC35L35-3.5-6.5-24-150-335-4S-H-G

## Features And Options

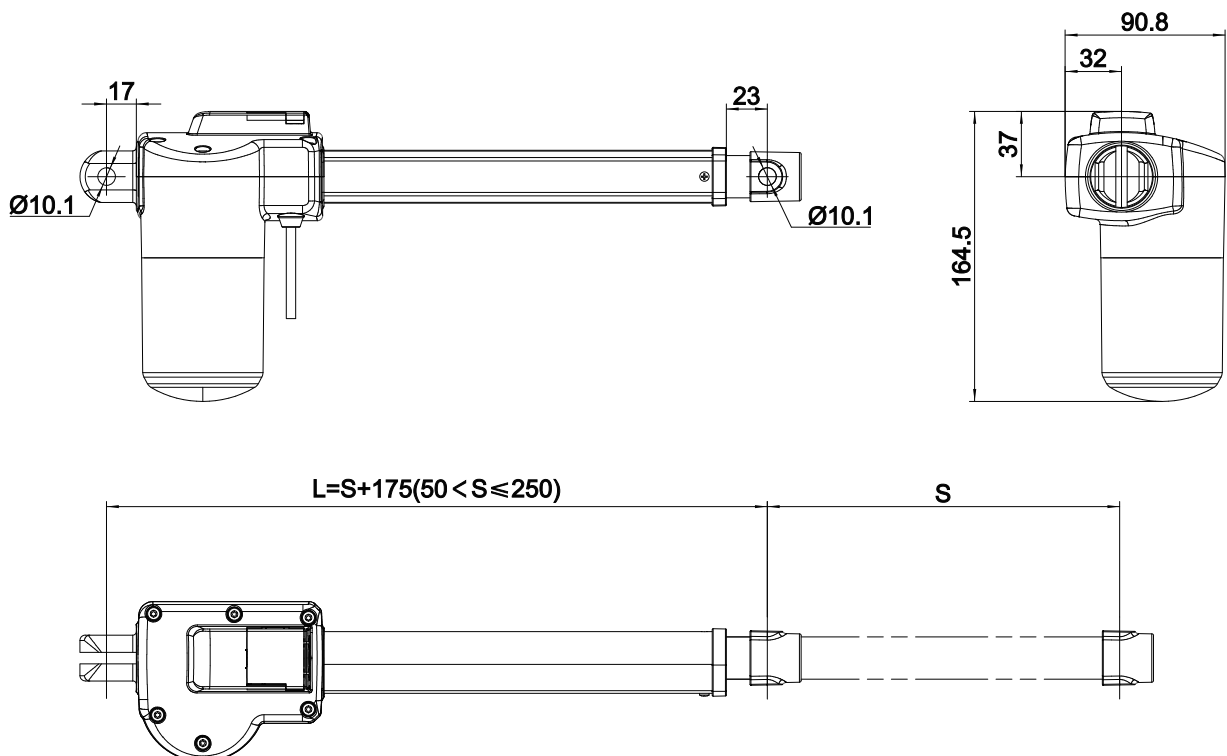
<b>Dynamic load push(N):</b>	3500
<b>Dynamic load pull (N):</b>	0
<b>Min. release force:</b>	≤300N
<b>Colour:</b>	Grey
<b>IP Grade:</b>	Max. IPX6
<b>Stroke Length:</b>	50-250mm(in steps of 4mm)
<b>Installation Dimensions:</b>	L=S+175 (50 < S ≤ 250)
<b>Noise Level:</b>	≤46dB(environmental noise ≤40dB)
<b>Optional:</b>	Safety nut, Hall sensor, Only push no pull
<b>Limit Switch:</b>	Built-in (electrical)
<b>Weight:</b>	About 2kg (different stroke length and installation dimensions with different weight )
<b>Static bending moment:</b>	Lateral load is not allowed
<b>Approval:</b>	IEC60601-1: 2012 EN 60601-1: 2006+A12: 2014 ANSI/AAMI ES60601-1: 2005/(R)2012 and A1: 2012, C1: 2009/(R)2012 and A2: 2010/(R)2012

## Usage

<b>Duty Cycle:</b>	10%, max. 2min.continuous working and 18 min.off
<b>Operating Temperature:</b>	+5°C to +40°C
<b>Reserve Temperature:</b>	-10°C to +50°C
<b>Supporting Control Box:</b>	match with JIECANG control box
<b>Relative Humidity:</b>	20% to 90% at 30°C, non-condensing
<b>Atmospheric Pressure:</b>	700 to 1060hPa

## Dimension Drawing

**Top clevis F09, aperture 10.1, end clevis B10**

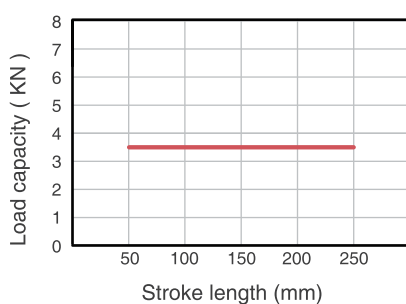


## Technical Data-Standard value

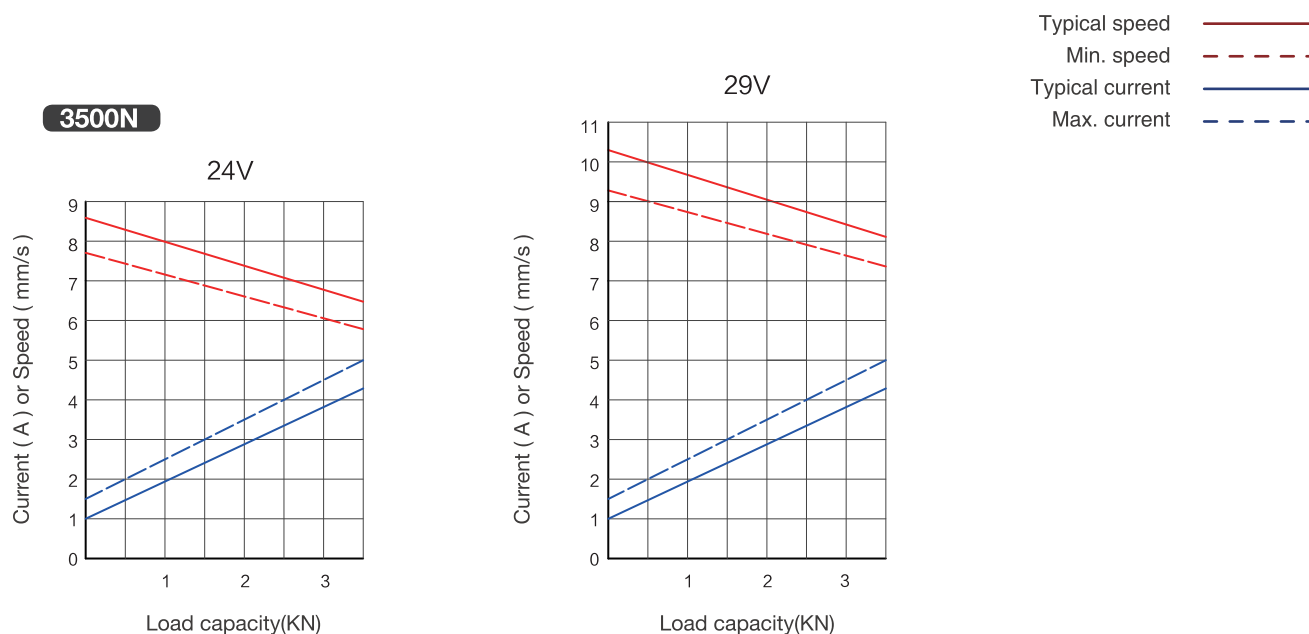
Input voltage (VDC)	Spindle pitch (mm)	Max. load in push (N)	Max. load in pull (N)	Mechanical self-lock (N)	Min. release force (N)	Speed at no load/full load (mm/s)	Current at full load (A)
24	6	3500	/	3500	≤300	8.3/6.5	≤5.0
29	6	3500	/	3500	≤300	10.3/8.2	≤5.0

Remarks: It can achieve better self-locking ability with Jiechang control box;  
The above data is the standard value of the test data (inspection specification) at room temperature of 25°C.

## Diagram of relationship between stroke length and load



## Characteristic Curve



## Ordering Example

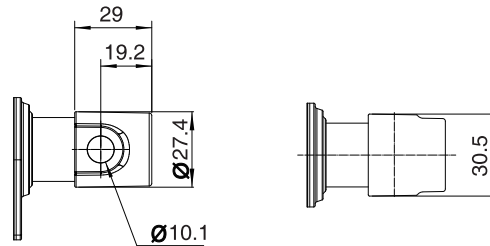
Take **JC35L3503D56D524200/375HGB10SF090021D5** for example

Model	JC35L35	
Optional features	X	0=Quick release (standard) P=Only push no pull+quick release (standard) S=safety nut+quick release (standard) Y=Hall sensor+quick release (standard) PS=Only push no pull+safety nut+quick release (standard) PY=Only push no pull+Hall sensor+Quick release (standard) SY=Hall sensor+safety nut+quick release (standard) N=Only push no pull+safety nut+Hall sensor+quick release (standard)
Load in push	X	3D5=3500N
Speed at full load	X	6D5=6.5mm/s
Input voltage	XX	24=24VDC / 29=29VDC
Stroke length/ Installation dimension	XXX/XXX	Stroke length = XXX Retracted length = XXX
Clevis directions	X	H = H direction / V=V direction
Color	X	G=Gray / B=Black
End clevis specification	XX	B10; slot 6.5, depth 32, hole 10.1
End clevis material	X	S= Plastic end clevis
Top clevis specification	XX	F09: the hole on inner tube is 14.2, the distance between the hole and the end face is 17; add D inner tube top clevis bushing, aperture 10.1; add D inner tube top clevis sleeve (gray)
Brake specification	X	0=Standard
Type of plug and cable	XX	02=4-pin DIN plug 10=5-pin DIN plug
Cable length	XXX	0D5=0.5m 1D5=1.5m 2D0=2.0m

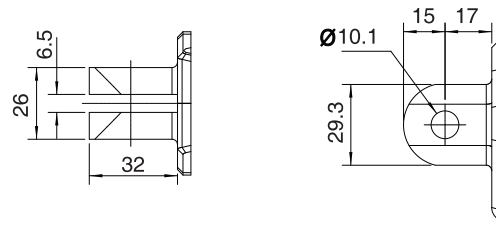
## Ordering Details

### Dimension drawing of clevis

#### Top clevis F09



#### End clevis B10

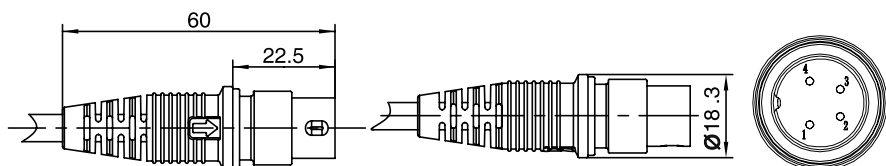


### Motor wire

#### 4-pin DIN plug (standard)

Supporting control boxes:  
JCB35Q / JCB35T / JCB35R /  
JCB35R1 / JCB35S

Pin	Color	Functions
1	NC	Not connected
2	Brown	power with positive voltage, actuator going down
3	Blue	power with positive voltage, actuator going up
4	NC	Not connected
Outer Circle	NC	Not connected



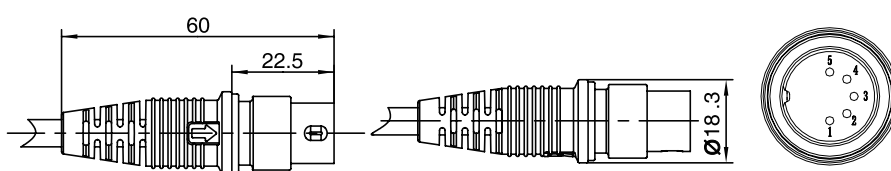
### 5 pin DIN plug (actuators with Hall sensor)

Supporting control boxes:

JCB35Q / JCB35T / JCB353R /  
JCB35R1 / JCB35S



Pin	Color	Functions
1	Red	5V
2	Brown	power with positive voltage, actuator going down
3	Black	GND
4	Blue	power with positive voltage, actuator going up
5	Yellow	Hall sensor signal 1
Outer Circle	Orange	Hall sensor signal 2





**BIBUS ENDÜSTRİYEL A.Ş.**

İkitelli OSB Bedrettin Dalan Bulvarı Vip Plaza  
Kat:2 No:43 Başakşehir/İstanbul

Tel. 444 20 38

Fax 0212 249 88 34

info@bibus.com.tr

www.bibus.com.tr

