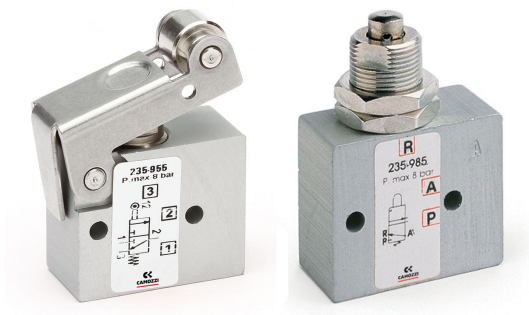


# MECHANICALLY OPERATED MINIVALVES

## SERIES 2

3/2-way  
Ports M5, cartridge Ø4



Series 2 mechanically operated miniature valves, 3/2-way normally closed, are available with M5 threaded ports or with an integrated super-rapid fitting for Ø4mm tubes.  
The devices are actuated by a plunger, roller/lever or a unidirectional lever.

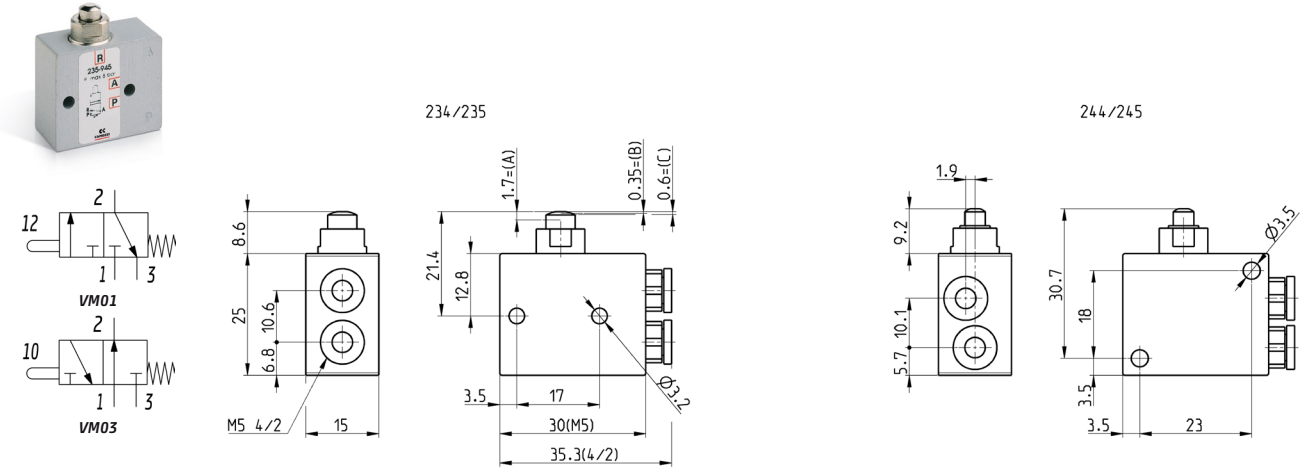
### General Data

|                    |   |
|--------------------|---|
| Construction       | Poppet type   |
| Valve group        | 3-way/2-position  |
| Materials          | Aluminium body, brass plunger, NBR seals  |
| Mounting           | By means of screws in the through-holes of the valve body   |
| Ports              | M5, Ø4mm cartridge  |
| Room temperature   | 0°C ÷ 60°C  |
| Fluid temperature  | 0°C ÷ 50°C  |
| Operating pressure | 2 bar ÷ 10 bar  |
| Fluid              | Filtered air, without lubrication. If lubricated air is used, it is recommended to use ISO VG32 oil.<br>Once applied the lubrication should never be interrupted. |

Coding Example

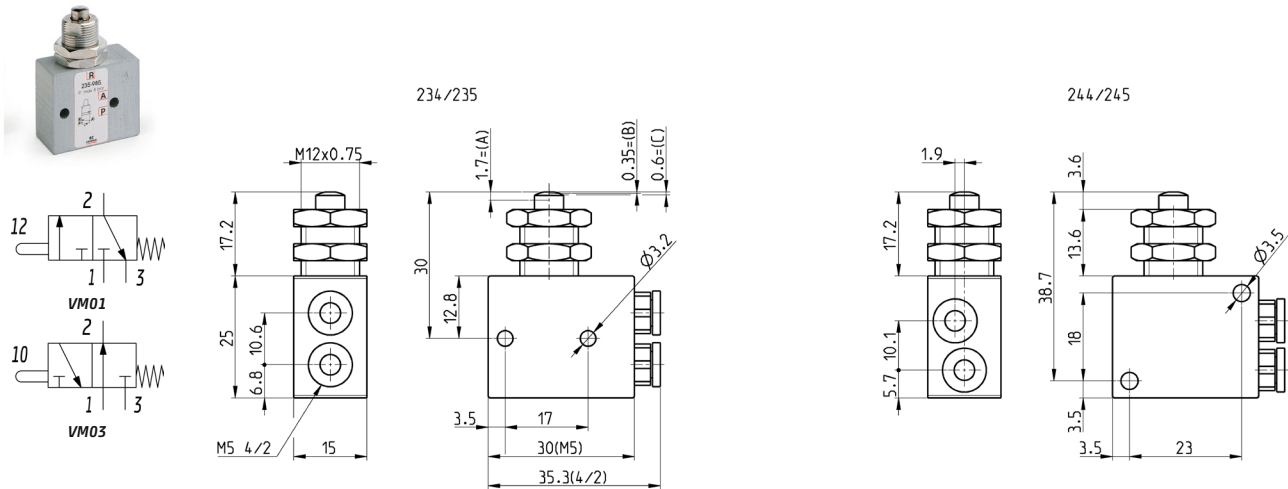
| 2  | 3   | 4 | - | 94 | 5 |
|----|---|---|---|----|---|
| 2  | SERIES  |   |   |    |   |
| 3  | FUNCTION<br>3 = 3/2-way NC<br>4 = 3/2-way NO  |   |   |    |   |
| 4  | PORTS<br>4 = Cartridge Ø4mm<br>5 = M5   |   |   |    |   |
| 94 | ACTUATION<br>94 = Plunger<br>95 = Lever/roller<br>96 = Unidirectional lever<br>98 = Plunger, panel mounting |   |   |    |   |
| 5  | RESETTING<br>5 = Spring return  |   |   |    |   |

Minivalves with plunger



| Mod.    | Operating pressure [bar] | Flow Qn [l/min] | Actuating force at 6 bar [N] | Symbol |
|---------|--------------------------|-----------------|------------------------------|--------|
| 234-945 | 2 ÷ 10                   | 60              | 6                            | VM01   |
| 235-945 | 2 ÷ 10                   | 60              | 6                            | VM01   |
| 244-945 | 2 ÷ 10                   | 60              | 6                            | VM03   |
| 245-945 | 2 ÷ 10                   | 60              | 6                            | VM03   |

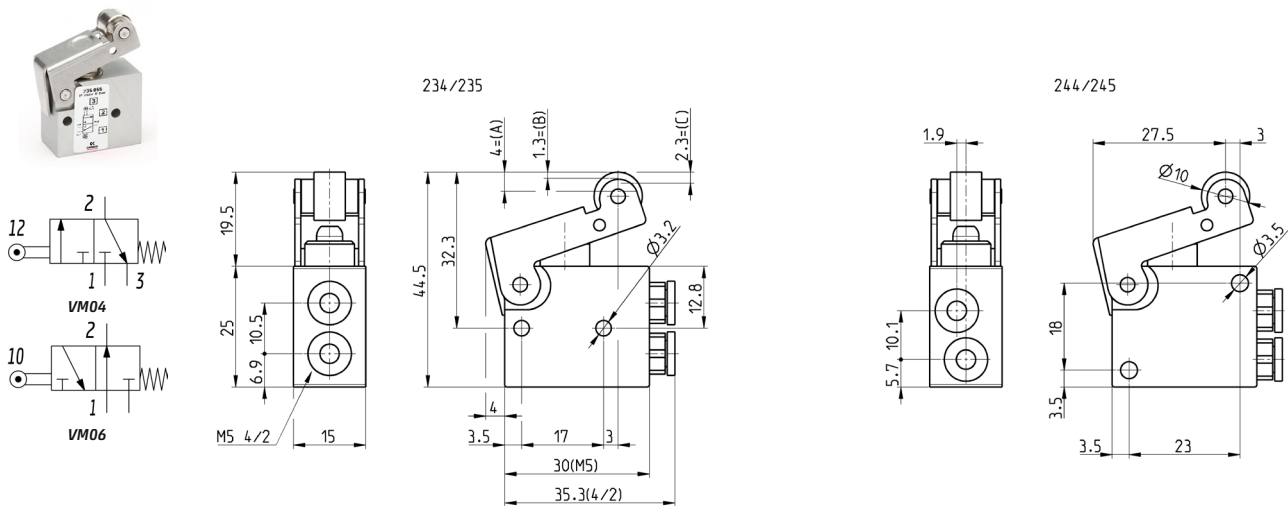
## Minivalves with plunger, panel mounting



A = total stroke  
B = pre-stroke  
C = effective stroke

| Mod.    | Operating pressure [bar] | Flow Qn [l/min] | Actuating force at 6 bar [N] | Symbol |
|---------|--------------------------|-----------------|------------------------------|--------|
| 234-985 | 2 ÷ 10                   | 60              | 6                            | VM01   |
| 235-985 | 2 ÷ 10                   | 60              | 6                            | VM01   |
| 244-985 | 2 ÷ 10                   | 60              | 6                            | VM03   |
| 245-985 | 2 ÷ 10                   | 60              | 6                            | VM03   |

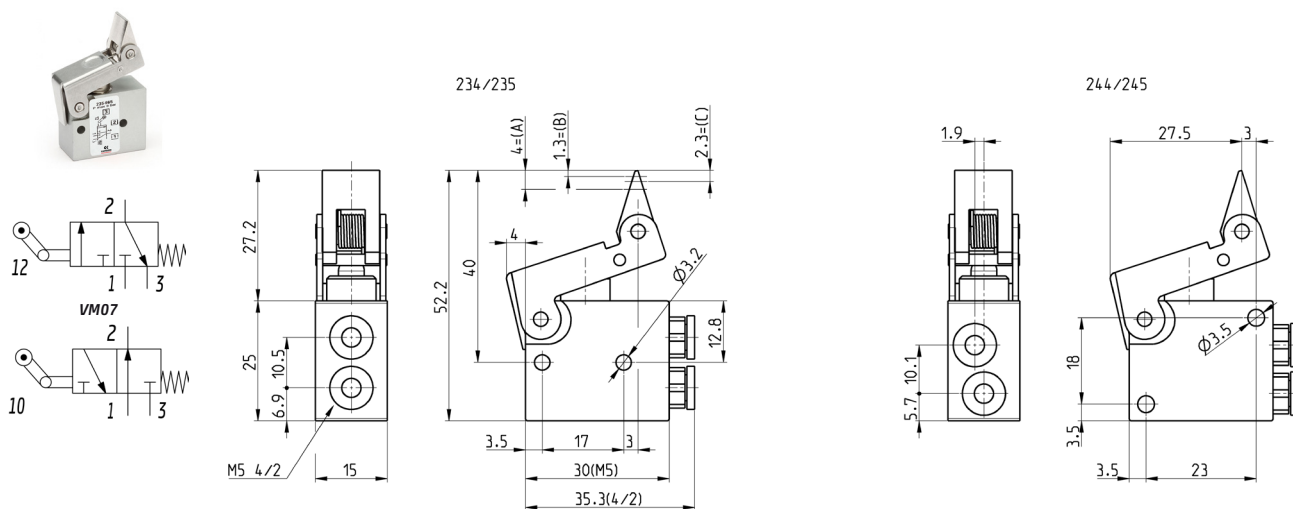
## Minivalves with lever/roller



A = total stroke  
B = pre-stroke  
C = effective stroke

| Mod.    | Operating pressure [bar] | Flow Qn [l/min] | Actuating force at 6 bar [N] | Symbol |
|---------|--------------------------|-----------------|------------------------------|--------|
| 234-955 | 2 ÷ 10                   | 60              | 6                            | VM04   |
| 235-955 | 2 ÷ 10                   | 60              | 6                            | VM04   |
| 244-955 | 2 ÷ 10                   | 60              | 6                            | VM06   |
| 245-955 | 2 ÷ 10                   | 60              | 6                            | VM06   |

## Minivalves, unidirectional lever



A = total stroke  
B = pre-stroke  
C = effective stroke

| Mod.    | Operating pressure [bar] | Flow Qn [l/min] | Actuating force at 6 bar [N] | Symbol |
|---------|--------------------------|-----------------|------------------------------|--------|
| 234-965 | 2 ÷ 10                   | 60              | 6                            | VM07   |
| 235-965 | 2 ÷ 10                   | 60              | 6                            | VM07   |
| 244-965 | 2 ÷ 10                   | 60              | 6                            | VMA1   |
| 245-965 | 2 ÷ 10                   | 60              | 6                            | VMA1   |