



DEUBLIN

Rotary Union AP Series

Water or Hydraulic Oil Service, DN 8 – 15

- Monoflow design
- Self supported Rotary Union
- Designed for high media pressure and high RPM
- Seals made of Tungsten Carbide
- Double row ball bearing, Lubricated for life
- Vent holes
- Steel housing nickel-plated
- Stainless steel end cap and rotor
- All parts in media contact are stainless steel and corrosion resistant

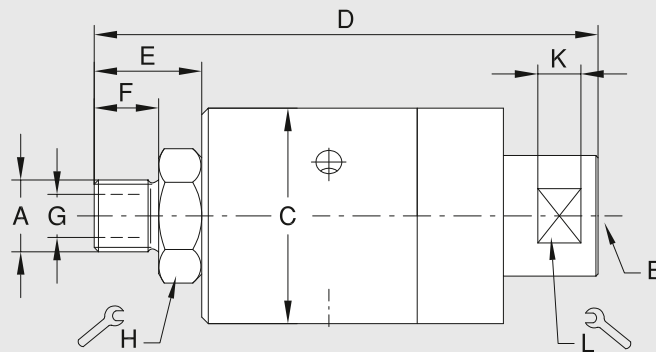
Operating Data

Max. Hydraulic/Water Pressure*	5,800 PSI	400 bar
Max. Speed*	1,500 rpm	1,500 min ⁻¹
Max. Temperature	194 °F	90 °C

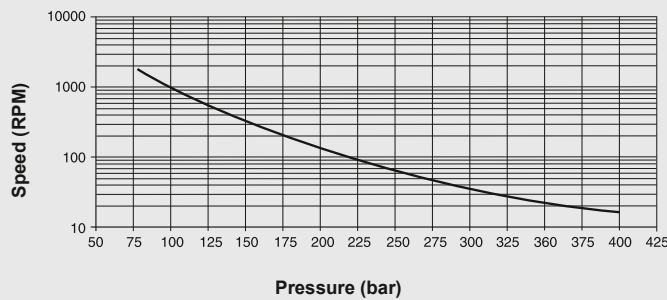
For higher temperature please consult Deublin.

* Operation at max. pressure combined with max. speed is not permissible

For further information please contact Deublin or your local representative.



AP8 – AP12



Monoflow Rotary Union

DN	B	Ordering-No	A Rotor Connections		C Ø	D	E	F	G Ø	H ⌀	K	L ⌀	kg
8	G 1/4	AP8-010-210	G 1/4 BSP	RH	50	117	25	15	7	27	10	25	0.8
10	G 3/8	AP10-010-210	G 3/8 BSP	RH	50	117	25	15	10	27	10	25	0.8
15	G 1/2	AP12-010-210	G 1/2 BSP	RH	50	122	30	20	12	27	10	25	1
	1/2 NPT	AP12-011-214	1/2 NPT	RH	50	122	30	20	12	27	10	25	1

DEUBLIN

Rotary Union 7100 Series High Pressure Hydraulic Service, DN 8 – 20, Duoflow

- Duoflow design
- Self-supported Rotary Union
- Hydrostatic bearing design
- Wear-resistant bearing
- Vent for controlled drainage
- Shaft seal for secondary sealing
- Stainless steel housing
- Hardened steel rotor

For further information please contact Deublin or your local representative.



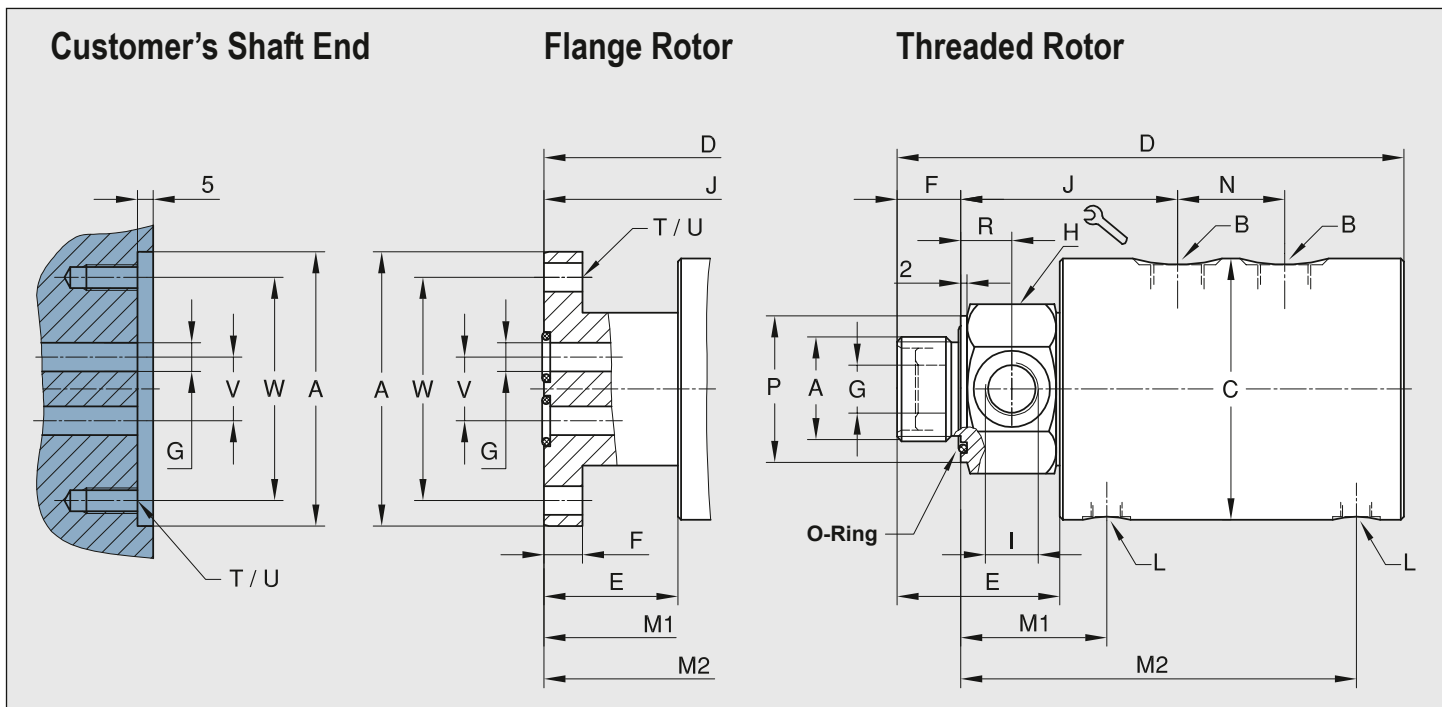
Operating Data

Max. Hydraulic Pressure	3,630 PSI	250 bar
Min. Hydraulic Pressure	40 PSI	3 bar
Max. Speed	500 rpm	500 min ⁻¹
Max. Temperature	158 °F	70 °C

Higher pressure and speed on request;

For higher temperature please consult Deublin.

Required Oil Cleanliness: class 17/15/12, ISO 4406:2017



Duoflow Rotary Union

DN	B	Ordering-No	A Rotor Connections	C Ø	D	E	F	G Ø	H ⌀	I	J	L	M1/M2	N	P Ø	R	T	U Ø	V Ø	W Ø	kg
2 x 8	G 1/4	7100-773	G 3/4 RH	82	176	46	17	6.4	46	G 1/4	76	G 1/8	49.5/137.5	36	46	15	-	-	-	-	4.5
	G 1/4	7100-852	Flange Ø86 g6/H7	82	172	42	12	9	-	-	89	G 1/8	62/151	36	-	-	4 x 90°	9 M8	20	70	4.5
2 x 10	G 3/8	7100-777	G 1 RH	82	181	51	20	8	46	G 3/8	78	G 1/8	52/140	36	46	16	-	-	-	-	4.4
	G 3/8	7100-853	Flange Ø86 g6/H7	82	172	42	12	9	-	-	89	G 1/8	63/151	36	-	-	4 x 90°	9 M8	20	70	4.4
2 x 15	G 1/2	7100-711	G 1 1/4 RH	109	244	70	26	15	55	G 1/2	101	G 1/4	70.5/180.5	50	55	18	-	-	-	-	11
	G 1/2	7100-854	Flange Ø108 g6/H7	109	230	56	16	12.5	-	-	113	G 1/4	82.5/192.5	50	-	-	4 x 90°	11 M10	20.5	88	11
2 x 20	G 3/4	7100-855	Flange Ø148 g6/H7	148	288	78	25	19	-	-	153	G 1/2	110.5/253	60	-	-	6 x 60°	13.5 M12	33	126	28