



FLOOR ELEMENTS

11

Adjustable Feet

Floor fasteners

Castors

Accessories for floor elements

Floor elements Products in this section



Levelling Knuckle Feet

- Threaded spindles for infinite height adjustment
- Metal or plastic foot plate

336



Knuckle Feet X

- Compatible with Profiles X
- Slope compensation via ball joint

339



Rubber Inserts

- Protect floors from damage
- Increase friction and prevent inadvertent movement

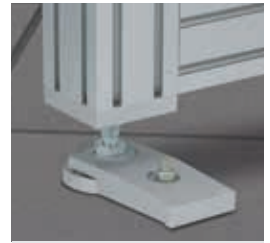
340



Anti-Vibration Insert D80

- Reduces vibration and absorbs impacts
- Ageing and corrosion-resistant

341



Foot Clamps

- Additional fixing for Knuckle Feet
- For fastening to floors and walls

343



Foot Mounting Bracket

- Height adjustable fixing for Knuckle Feet
- Enables fitting to the sides of profile frames

344



Adjustable Feet PA

- For tables and lightweight equipment
- Tool-free adjustment

345



Adjustable Foot D47, M10x30

- Height compensation easily adjusted from above
- Ideal for base plates

346



L-Based Feet

- For heavy-duty and non-movable equipment
- For fastening to walls and floors

347



Floor Bracket Sets 8 160x60 St

- A secure hold on vertical struts
- Supports precise height compensation

351



Stand Foot 8 240x160

- Stable hold for free-standing enclosures and guards
- Can be screwed to the floor

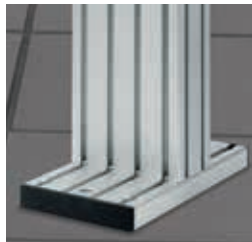
352



Partition Base Plates

- Fastening for up to two partition elements
- Stable and easy to fit

354



Base Plates

- Stable termination for Stand Profiles
- Levelling via set screws

357



Castors

- Wide range of sizes and materials
- Extremely strong and durable

359



Castors with a connecting plate

- Direct, load-bearing in-groove fastening
- Full range of Castors for various transport loads

367



Swivel Locks for the Swivel Castor

- Can be retrofitted to Swivel Castors with connecting plates
- Locks the direction of travel at the touch of a foot

380



Jacking Castors D62

- Robust Castor ensures mobility
- Integrated foot for secure stability with height adjustment option

382



Castor Support 8 80x40

- Low centre of gravity produces stable wheeled constructions
- With flexible impact and scratch protection

385



Floor-Fastening Sets

- For anchoring in floors and walls
- Particularly suitable for use in concrete

386



Base Plates/Transport Plates

- Stable termination for the end faces of profiles
- For securely fastening castors and Knuckle Feet

388



Collision Guard L With Hazard Markings

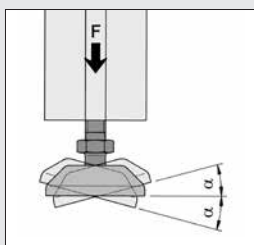
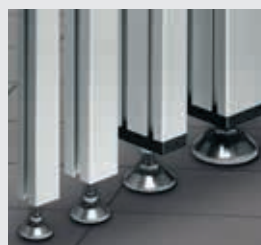
- Robust protection for free-standing racks, etc.
- Prevents damage caused by trolleys and vehicles

392



Knuckle Feet

- Threaded spindles ensure stepless height adjustment
- Slope compensation via ball joint
- Metal or plastic foot plate
- Stainless, ESD-safe versions available



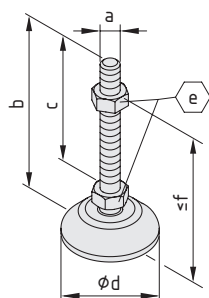
The steplessly adjustable feet are suitable for structures of all kinds.

Depending on the particular application, the adjustable feet can be fitted in the core bores of profiles or used in combination with Base Plates / Transport Plates. The range of applications can be extended by appropriate inserts and foot clamps.

A ball and socket joint compensates for slopes.

Adjustable Foot	Load F (vertical)	Slope α
D20, M5x45	750 N	15°
D20, M5x45 stainless	1,500 N	7°
D30, M6x45	900 N	15°
D30, M6x45 stainless	1,500 N	7°
D30, M6x60	900 N	15°
D40, M8x60	1,500 N	15°
D40, M8x60 stainless	10,000 N	7°
D40, M8x80	1,500 N	15°
D40, M10x80	1,500 N	15°
D60, M10x75	5,000 N	7°
D60, M12x75	5,000 N	7°
D60, M12x75 stainless	15,000 N	7°
D60, M10x120	5,000 N	7°
D60, M12x120	5,000 N	7°
D80, M10x80	10,000 N	7°
D80, M12x100	10,000 N	7°
D80, M16x100	10,000 N	7°
D80, M16x100 stainless	20,000 N	7°
D80, M12x160	10,000 N	7°
D80, M16x160	10,000 N	7°

Knuckle Feet with plastic foot plate



The following applies to all the products below:

Spindle, St, bright zinc-plated

Foot plate, PA

Hexagon nut DIN 934, St, bright zinc-plated

Knuckle Foot D20, M5x45

a	b [mm]	c [mm]	d [mm]	e [mm]	f [mm]	m [g]
M5	44	32	19.5	8	33	7.0
black, 1 pce.						0.0.464.75

Knuckle Foot D30, M6x45

a	b [mm]	c [mm]	d [mm]	e [mm]	f [mm]	m [g]
M6	48	32	29.5	10	35	16.0
black, 1 pce.						0.0.434.52

Knuckle Foot D30, M6x60

a	b [mm]	c [mm]	d [mm]	e [mm]	f [mm]	m [g]
M6	63	47	29.5	10	50	17.0
black, 1 pce.						0.0.434.51

Knuckle Foot D40, M8x60

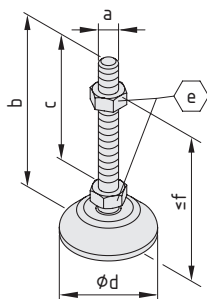
a	b [mm]	c [mm]	d [mm]	e [mm]	f [mm]	m [g]
M8	63	41	39	13	50	37.0
black, 1 pce.						0.0.364.68
grey similar to RAL 7042, 1 pce.						0.0.636.97

Knuckle Foot D40, M8x80

a	b [mm]	c [mm]	d [mm]	e [mm]	f [mm]	m [g]
M8	83	60	39	13	70	43.0
black, 1 pce.						0.0.265.69
grey similar to RAL 7042, 1 pce.						0.0.636.99

Knuckle Foot D40, M10x80

a	b [mm]	c [mm]	d [mm]	e [mm]	f [mm]	m [g]
M10	83	60	39	17	65	65.0
black, 1 pce.						0.0.265.74
grey similar to RAL 7042, 1 pce.						0.0.637.01

Knuckle Feet with metal foot plate

The following applies to all the products below:

Spindle, St, bright zinc-plated

foot plate, die-cast zinc

Hexagon nut DIN 934, St, bright zinc-plated

Knuckle Foot D60, M10x75

a	b [mm]	c [mm]	d [mm]	e [mm]	f [mm]	m [g]
M10	75	52	57	17	55	140.0
black, 1 pce.						0.0.439.29
white aluminium, similar to RAL 9006, 1 pce.						0.0.635.49

Knuckle Foot D60, M10x120

a	b [mm]	c [mm]	d [mm]	e [mm]	f [mm]	m [g]
M10	120	97	57	17	100	163.0
black, 1 pce.						0.0.439.30
white aluminium, similar to RAL 9006, 1 pce.						0.0.635.51

Knuckle Foot D60, M12x75

a	b [mm]	c [mm]	d [mm]	e [mm]	f [mm]	m [g]
M12	75	52	57	19	55	162.0
black, 1 pce.						0.0.439.22
white aluminium, similar to RAL 9006, 1 pce.						0.0.635.43

Knuckle Foot D60, M12x120

a	b [mm]	c [mm]	d [mm]	e [mm]	f [mm]	m [g]
M12	120	97	57	19	100	193.0
black, 1 pce.						0.0.439.23

Knuckle Foot D80, M10x80

a	b [mm]	c [mm]	d [mm]	e [mm]	f [mm]	m [g]
M10	80	53	76	17	60	263.0
black, 1 pce.						0.0.432.84
white aluminium, similar to RAL 9006, 1 pce.						0.0.635.24

Knuckle Foot D80, M12x100

a	b [mm]	c [mm]	d [mm]	e [mm]	f [mm]	m [g]
M12	100	72	76	19	80	300.0
black, 1 pce.						0.0.265.67

Knuckle Foot D80, M12x160

a	b [mm]	c [mm]	d [mm]	e [mm]	f [mm]	m [g]
M12	160	132	76	19	140	340.0
black, 1 pce.						0.0.265.68
white aluminium, similar to RAL 9006, 1 pce.						0.0.635.17

Knuckle Foot D80, M16x100

a	b [mm]	c [mm]	d [mm]	e [mm]	f [mm]	m [g]
M16	100	72	76	24	80	366.0
black, 1 pce.						0.0.265.29
white aluminium, similar to RAL 9006, 1 pce.						0.0.635.20

Knuckle Foot D80, M16x160

a	b [mm]	c [mm]	d [mm]	e [mm]	f [mm]	m [g]
M16	160	132	76	24	140	450.0
black, 1 pce.						0.0.265.66
white aluminium, similar to RAL 9006, 1 pce.						0.0.636.95

ESD-safe and stainless

The following applies to all the products below:

Spindle, St
Foot plate, St
Hexagon nut DIN 934, St


Knuckle Foot D20, M5x45

a	b [mm]	c [mm]	d [mm]	e [mm]	f [mm]	m [g]
M5	44	32	19.5	8	33	19.0
stainless, 1 pce.						0.0.464.81

Knuckle Foot D30, M6x45

a	b [mm]	c [mm]	d [mm]	e [mm]	f [mm]	m [g]
M6	48	32	29.5	10	35	47.0
stainless, 1 pce.						0.0.478.22

Knuckle Foot D40, M8x60

a	b [mm]	c [mm]	d [mm]	e [mm]	f [mm]	m [g]
M8	63	41	39	13	50	107.0
stainless, 1 pce.						0.0.475.41

Knuckle Foot D40, M10x80

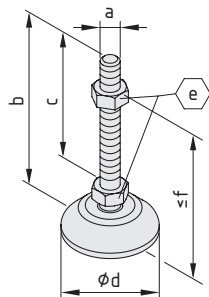
a	b [mm]	c [mm]	d [mm]	e [mm]	f [mm]	m [g]
M10	83	60	39	17	65	143.0
stainless, 1 pce.						0.0.640.57

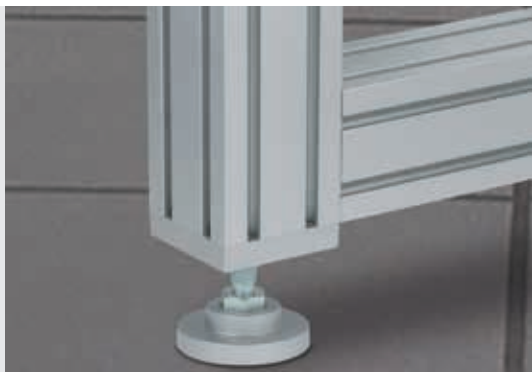
Knuckle Foot D60, M12x75

a	b [mm]	c [mm]	d [mm]	e [mm]	f [mm]	m [g]
M12	75	52	57	19	55	185.0
stainless, 1 pce.						0.0.478.13

Knuckle Foot D80, M16x100

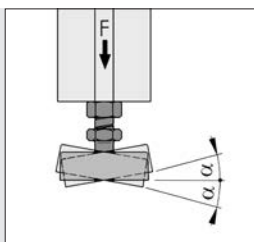
a	b [mm]	c [mm]	d [mm]	e [mm]	f [mm]	m [g]
M16	100	72	76	24	80	435.0
stainless, 1 pce.						0.0.476.39





Knuckle Feet X

- Compatible with Profiles X
- Slope compensation via ball joint
- Metal or plastic foot plate



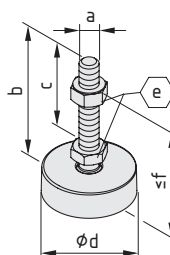
Knuckle Foot	Load F (vertical)	Slope α
X D40, M8x60	1,500 N	15°
X D40, M8x80	1,500 N	15°
X D40, M10x80	1,500 N	15°
X D80, M16x100	10,000 N	7°

The following applies to all the products below:

Spindle, St, bright zinc-plated

Foot plate, PA

Hexagon nut DIN 934, St, bright zinc-plated



Knuckle Foot X D40, M8x60							Line
a	b [mm]	c [mm]	d [mm]	e [mm]	f [mm]	m [g]	
M8	63	41	38	13	50	38.0	
grey similar to RAL 7042, 1 pce.							0.0.602.44

Knuckle Foot X D40, M8x80							Line
a	b [mm]	c [mm]	d [mm]	e [mm]	f [mm]	m [g]	
M8	83	60	38	13	70	45.0	
grey similar to RAL 7042, 1 pce.							0.0.602.46

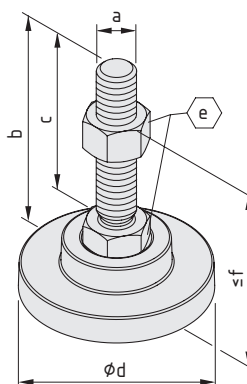
Knuckle Foot X D40, M10x80							Line
a	b [mm]	c [mm]	d [mm]	e [mm]	f [mm]	m [g]	
M10	83	60	38	17	65	64.0	
grey similar to RAL 7042, 1 pce.							0.0.496.02

The following applies to all the products below:

Spindle, St, bright zinc-plated

foot plate, die-cast zinc

Hexagon nut DIN 934, St, bright zinc-plated



Knuckle Foot X D80, M16x100							Line
a	b [mm]	c [mm]	d [mm]	e [mm]	f [mm]	m [g]	
M16	105.5	73.5	78	24	73	457.0	
white aluminium, similar to RAL 9006, 1 pce.							0.0.496.03



Rubber Inserts

- Protect floors from damage
- Increase friction and prevent inadvertent movement
- Compatible with Knuckle Feet D30, D40, D60 and D80
- Products from Line X also available



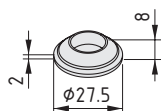
Rubber Insert D80 can also be used in combination with Adjustable Foot 8 PA. This increases the overall height of the Adjustable Foot by 12 mm.



The Rubber Inserts are suitable for use as anti-slip devices and floor protectors. They can be retrofitted to Knuckle Feet D30 and D40 (not the stainless models) and D60 and D80.



11

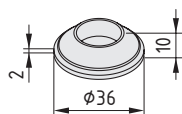


Rubber Insert D30

NBR
Hardness 80 Sh A, oil and water resisting
m = 3.0 g

black, 1 pce.

0.0.434.50

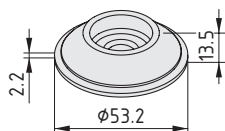


Rubber Insert D40

NBR
Hardness 80 Sh A, oil and water resisting
m = 6.0 g

black, 1 pce.

0.0.265.70

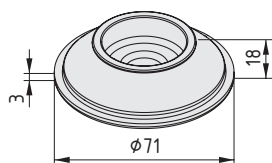


Rubber Insert D60

NBR
Hardness 80 Sh A, oil and water resisting
m = 18.0 g

black, 1 pce.

0.0.439.33

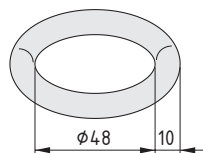


Rubber Insert D80

NBR
Hardness 80 Sh A, oil and water resisting
m = 42.0 g

black, 1 pce.

0.0.265.61



Rubber Insert X D80

NBR
Hardness 70 Sh A, oil/water-resistant
m = 18.0 g

black, 1 pce.

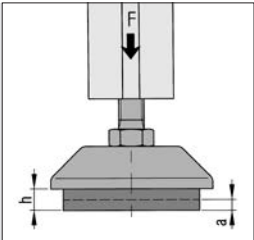


0.0.606.51

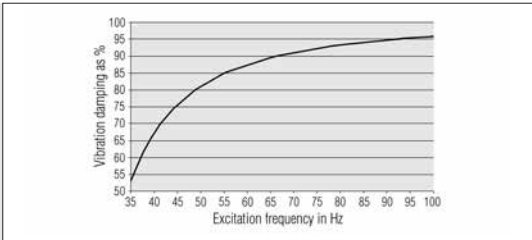


Anti-Vibration Insert D80

- Reduces vibration and absorbs impacts
- Ageing and corrosion-resistant
- Resistant to oils, greases, acids and solvents
- Stainless steel Knuckle Feet retain their ESD functionality

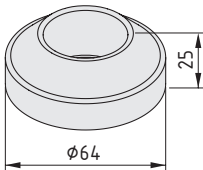


F	a
2,000 N	4 mm
10,000 N	6 mm



The effective height (h) when not under load is 9 mm.
The value of h decreases by the spring distance a as a function of the force F.

The degree of vibration damping depends on the excitation frequency. Shocks (excitation below the natural frequency) will be reduced by the self-damping.

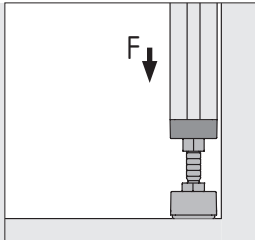


Anti-Vibration Insert D80	
St	
Self-damping: Approx. 15%	
Natural frequency: 20-25 Hz	
Resonance ratio: Approx. 3.3	
Static load F_{stat} : 2,000 N	
Max. dynamic pressure loading F_{dyn} : 10,000 N	
$m = 115.0 \text{ g}$	
stainless, 1 pce.	0.0.458.93



Adjustable Foot 80x40, M12x120

- Rectangular foot for flush mounting against walls
- Infinitely variable height adjustment

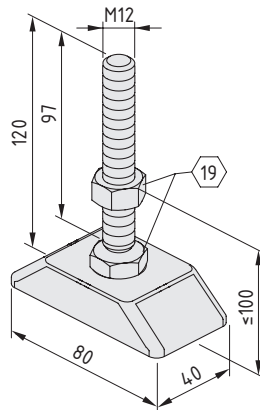


$F_{max} = 5000 \text{ N}$



Use of the Rubber Insert is recommended to prevent movement and to protect the floor from damage.

11

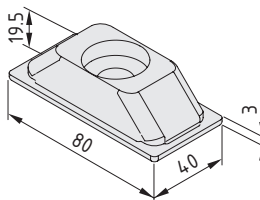


Adjustable Foot 80x40, M12x120

Spindle, St, bright zinc-plated
Base Plate, die-cast zinc, black
Hexagon Nut DIN 934-M12, St, bright zinc-plated
 $m = 280.0 \text{ g}$

1 pce.

0.0.608.93



Rubber Insert 80x40

NBR
Hardness 80 Sh A, oil and water resisting
 $m = 43.1 \text{ g}$

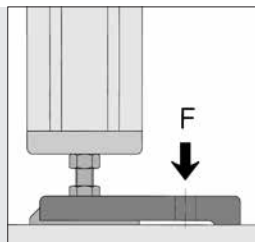
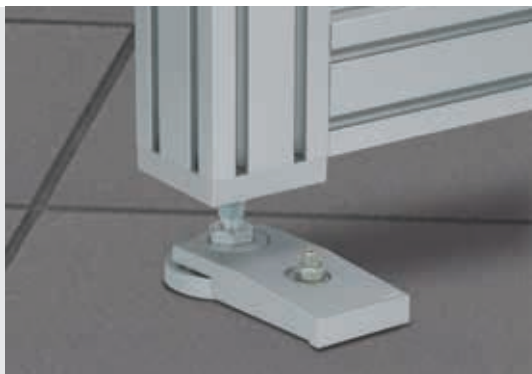
black, 1 pce.

0.0.609.05



Foot Clamps

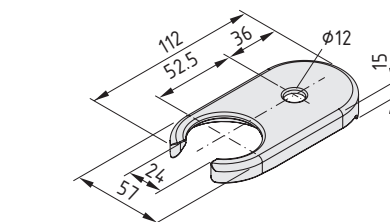
- For fixing Knuckle Feet in place
- For fastening to floors and walls
- Products from Line X also available



The permissible load for the Foot Clamps at the fastening point is $F_{\text{perm.}} = 5,000 \text{ N}$.

Special Foot Clamps are available for securing Knuckle Feet X D80.

Foot Clamps X D80 can be combined with Knuckle Feet X D80. They are used to secure structures made from Profiles X 8 to the floor and wall.

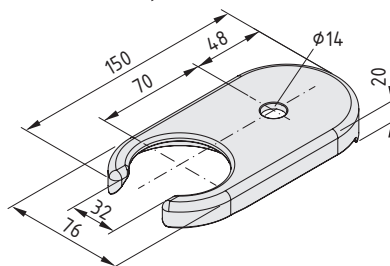


Foot Clamp D60

Die-cast zinc
m = 223.0 g

black, 1 pce.

0.0.439.37

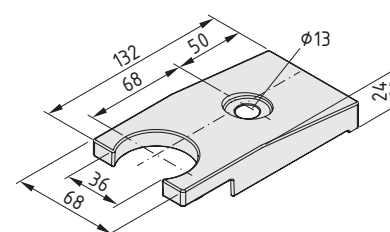


Foot Clamp D80

Die-cast zinc
m = 492.0 g

black, 1 pce.

0.0.265.30



Foot Clamp X D80

Die-cast zinc
m = 480.0 g

white aluminium, similar to RAL 9006, 1 pce.

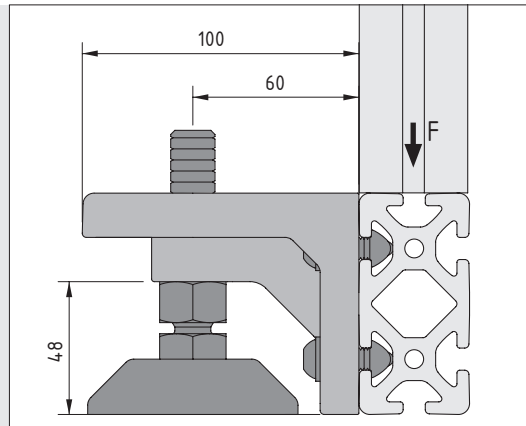
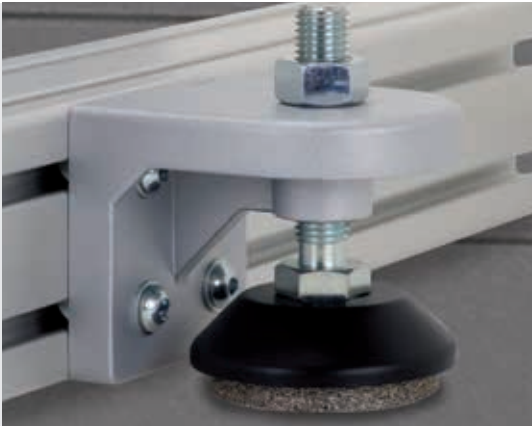


0.0.495.96



Foot Mounting Bracket

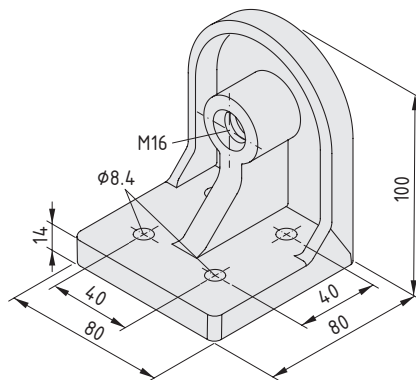
- Height adjustable fixing for Knuckle Feet
- Fitted to the sides of profiles



Foot Mounting Bracket 8 D80 allows height adjustable feet with M16 threaded spindle (primarily Knuckle Foot D80, M16) to be mounted on the side of a frame construction. Machines or systems can be installed with minimum distance to the floor but can still be adjusted in height.

The maximum permissible load on the Foot Mounting Bracket is $F = 4,000 \text{ N}$. The load-carrying capacity of the adjustable foot must not be exceeded.

11



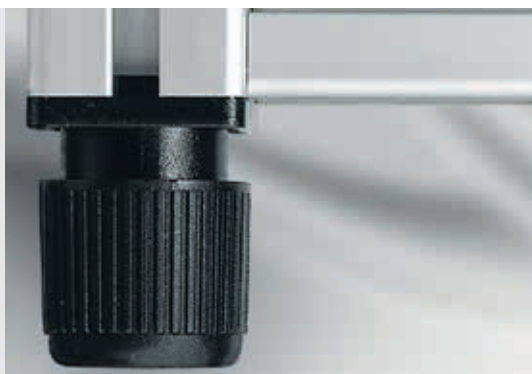
Foot Mounting Bracket 8 D80



Die-cast Al
m = 363.0 g

white aluminium, similar to RAL 9006, 1 pce.

0.0.612.01

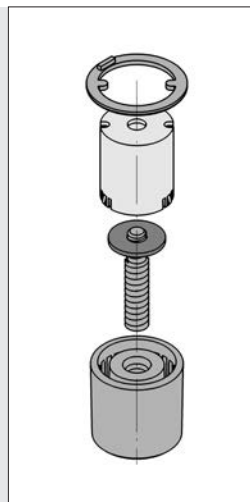
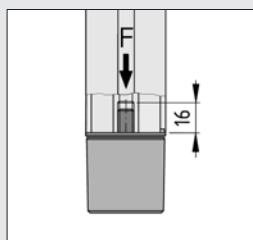
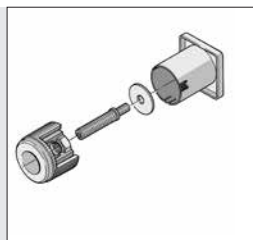


Adjustable Feet PA

- For tables and lightweight equipment
- Tool-free height adjustment mechanism
- Available for Profiles 8 40x40, D40 and Profiles X 8 40x40

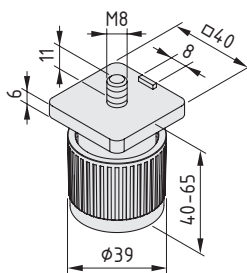


It can be installed either in the face end of a Line 8 profile (using the core bore) or in a profile groove (using a T-Slot Nut - 0.0.480.48).



The spindle is screwed into an M8 thread in the core bore of the profile. Tools are not required to make height adjustments – simply turn the lower part of the foot manually.

$F_{perm.} = 1,500 \text{ N}$



Adjustable Foot 8 PA



Housing, PA-GF, black
Spindle, nut and washer, St, bright zinc-plated
 $m = 71.0 \text{ g}$

1 pce.

0.0.196.64

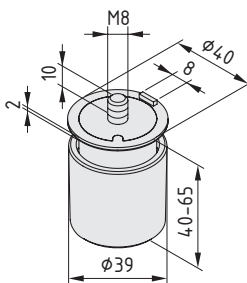
Adjustable Foot 8 PA



Housing, PA-GF, grey
Spindle, nut and washer, St, bright zinc-plated
 $m = 71.0 \text{ g}$

1 pce.

0.0.627.80



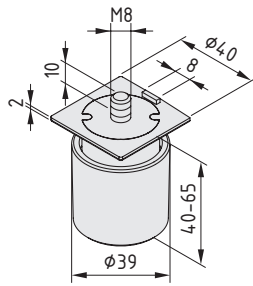
Adjustable Foot 8 D40 PA



Housing, inner part and end plate, PA-GF, black
Spindle and washer, St, bright zinc-plated
 $m = 69.0 \text{ g}$

1 set

0.0.603.33



Adjustable Foot X 8 PA 40x40



Housing, inner part and end plate, PA-GF, grey
Spindle and washer, St, bright zinc-plated
m = 69.0 g

1 pce.

0.0.603.74



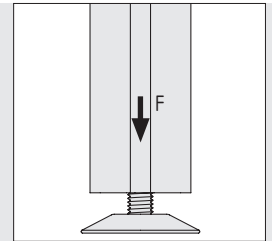
Adjustable Foot D47, M10x30

■ Adjustable from above

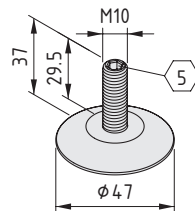
11

The stable foot that offers added convenience. Making height adjustments is very simple because the screw is accessed from above.

Adjustable Foot D47, M10x30 can be adjusted easily using a 5 A/F key, such as when used in a table base or machine baseplate.



F = 1500 N



Adjustable Foot D47, M10x30

St, bright zinc-plated
m = 77.0 g

black, 1 pce.

0.0.658.04



L-Based Feet

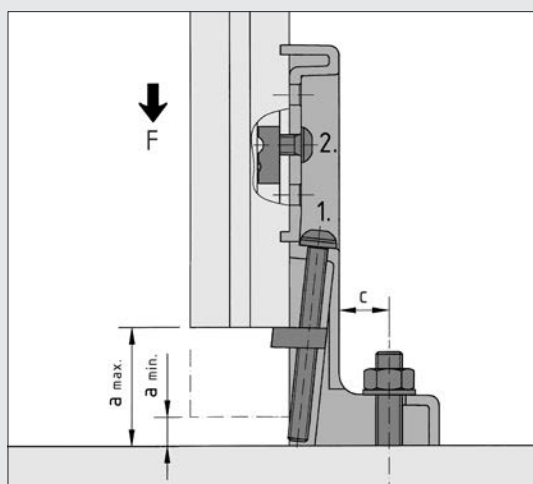
- For heavy-duty and non-movable equipment
- For fastening to walls and floors





L-Based Feet ensure a secure hold. Because they are screwed to the grooves of the profile, several of the feet can be used. Furthermore, L-Based Feet enable users to anchor profiles to

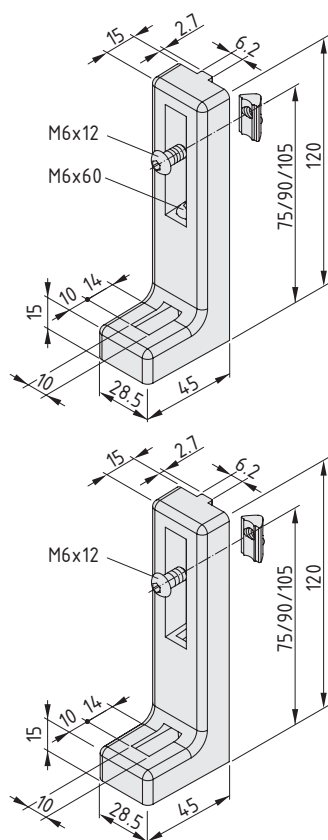
walls or floors. item supplies additional Floor-Fastening Sets for this purpose.

Floor-Fastening Sets  386



The height adjustment mechanism in the L-Based Foot enables users to compensate for unevenness in the floor. The foot is adjusted by turning the set screw (1.). The selected height is then fixed by tightening the fastening screw at the side (2.).

L-Based Feet	a [mm]		c [mm]	F _{max.}
	max.	min.		
	53.5	8.5	8 - 16	3,000 N
	75.0	10.0	13 - 25	6,000 N



L-Based Foot 6 adjustable

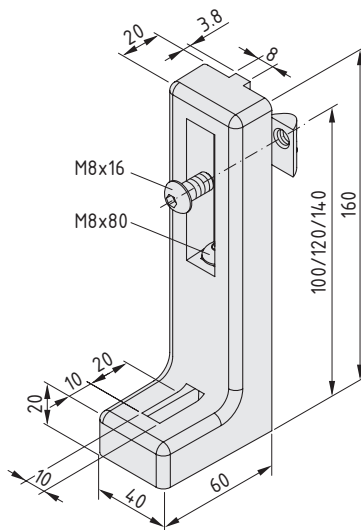
Housing, die-cast aluminium, black
 T-Slot Nut 6 St M6, bright zinc-plated
 Button-Head Screw ISO 7380-M6x12, St, bright zinc-plated
 Button-Head Screw ISO 7380-M6x60, St, bright zinc-plated and slide-coated
 Square nut M6, St, bright zinc-plated
 m = 111.0 g

1 pce. 0.0.434.71

L-Based Foot 6 non-adjustable

Housing, die-cast aluminium, black
 T-Slot Nut 6 St M6, bright zinc-plated
 Button-Head Screw ISO 7380-M6x12, St, bright zinc-plated
 m = 91.0 g

1 pce. 0.0.434.70



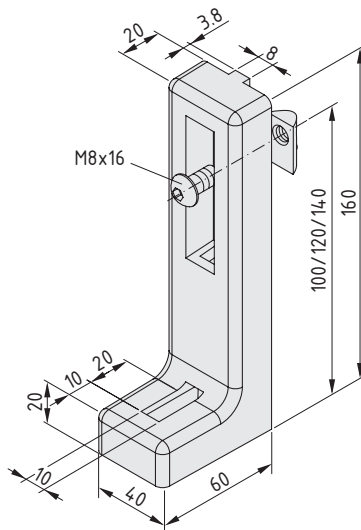
L-Based Foot 8 adjustable



Housing, die-cast aluminium, black
T-Slot Nut 8 St M8, bright zinc-plated
Button-Head Screw ISO 7380-M8x16, St, bright zinc-plated
Button-Head Screw ISO 7380-M8x80, St, bright zinc-plated and slide-coated
Washer DIN 433-8.4, St, bright zinc-plated
Square nut M8, St, bright zinc-plated
m = 287.0 g

1 pce.

0.0.196.45



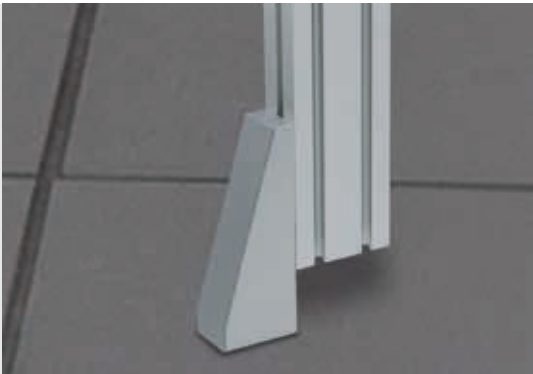
L-Based Foot 8 non-adjustable



Housing, die-cast aluminium, black
T-Slot Nut 8 St M8, bright zinc-plated
Button-Head Screw ISO 7380-M8x16, St, bright zinc-plated
m = 239.0 g

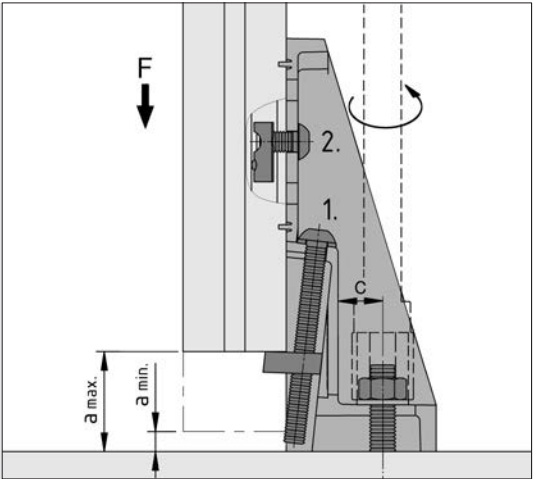
black, 1 pce.


0.0.265.44



L-Based Foot X 8 adjustable

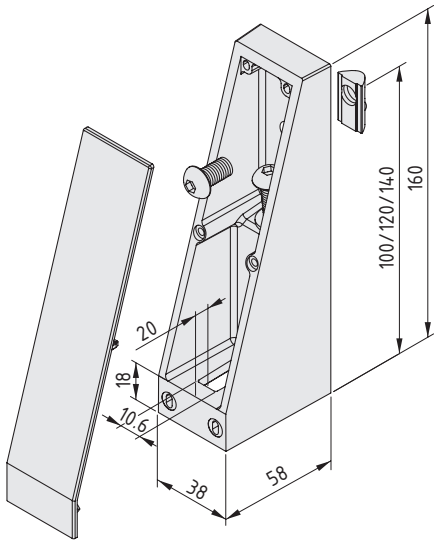
- Compatible with Profiles X
- Easy to compensate for unevenness in the floor
- Easy-to-clean design



L-Based Feed	a [mm]		c [mm]	F _{max.}
	max.	min		
	75.0	10.0	13 - 25	6,000 N

L-Based Foot X 8 adjustable provides a simple method of levelling equipment on uneven floors by means of height adjustment. The adjustment is made by turning the adjusting screw (1). The selected height is then fixed by tightening the fastening screw at the side (2). The Floor-Fastening Set can be screwed into L-Based Foot X 8 using a socket wrench.

Floor-Fastening Sets  386



L-Based Foot X 8 adjustable



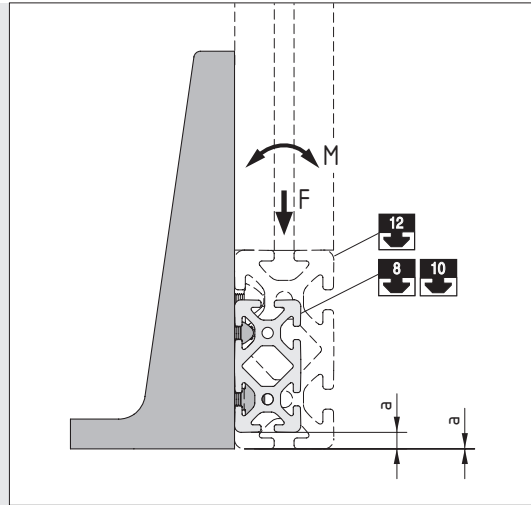
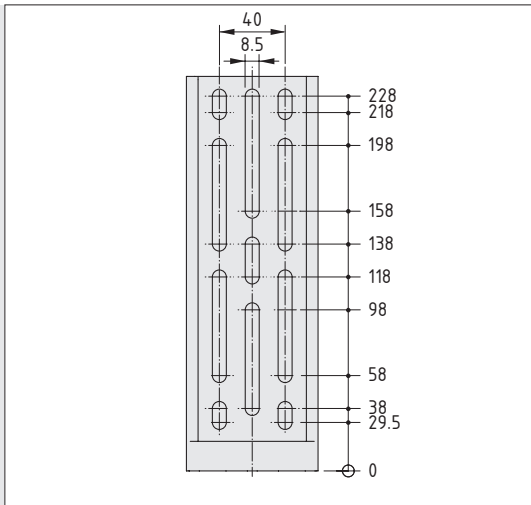
Housing, die-cast aluminium, white aluminium
Cap, PA-GF, grey
T-Slot Nut V 8 St M8, bright zinc-plated
Button-Head Screw ISO 7380-M8x80, St, bright zinc-plated
Button-Head Screw ISO 7380-M8x16, St, bright zinc-plated
Square nut, St, bright zinc-plated
Washer DIN 433-8.4, St, bright zinc-plated
m = 342.0 g

1 set	0.0.600.13
-------	------------



L-Based Foot 8-12

- Extremely stable and extremely flexible
- Secure floor anchoring of construction
- Ideal for fastening machinery that has already been installed and aligned



The slotted holes for fastening to the side face of a profile are compatible with the modular dimensions of Lines 8, 10 and 12.

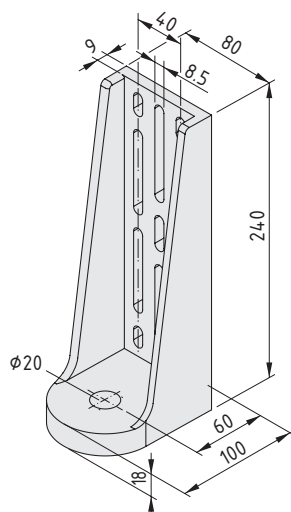
The number of fastening screws can be increased to raise the stability. In this way, L-Based Foot 8-12 240x100 also stabilises machine frames against movement and vibration.

In the case of Line 8 profiles, the distance to the floor when using the lower groove for attaching the L-Based Foot is $a = 9.5$ mm. In the case of Line 10 profiles $a = 4.5$ mm. Line 12 profiles can be screwed to the L-Based Foot so that they are flush to the floor.

$M_{\max.} = 150$ Nm

$F_{\max.} = 4,000$ N

Floor-Fastening Sets 386



L-Based Foot 8-12 240x100

Die-cast Al
m = 750.0 g

white aluminium, similar to RAL 9006, 1 pce.

0.0.610.89



Floor Bracket Sets 8 160x60 St

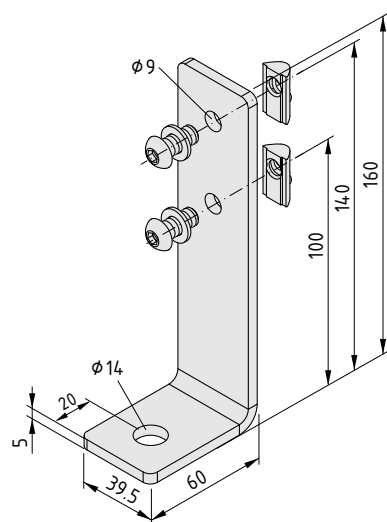
- Secure floor anchoring
- Simple levelling mechanism



Holding level – Floor Bracket Set 8 160x60x40 St and Floor Bracket Set 8 160x60x80 St are a stable addition to the item range of supporting feet. They anchor frames securely to the ground and allow precise levelling. The Floor Brackets are screwed to the Line 8 groove in a profile, which means they allow very straightforward height adjustment. An item adjustable foot can be used to fine-tune the level of a structure. This means that uneven floors need not present a problem.

Because it is fixed to the groove, it can also be retrofitted to existing machinery to anchor it to the ground. Depending on the profile size, weight and relevant forces, users can choose between the narrower Floor Bracket Set 8 160x60x40 St (which fastens to a single Line 8 groove) or the wider Floor Bracket Set 8 160x60x80 St.

Floor-Fastening Sets



Floor Bracket Set 8 160x60x40 St

Floor Bracket 8 160x60x40 St, white aluminium similar to RAL 9006

2 washers DIN433-8.4, St, bright zinc-plated

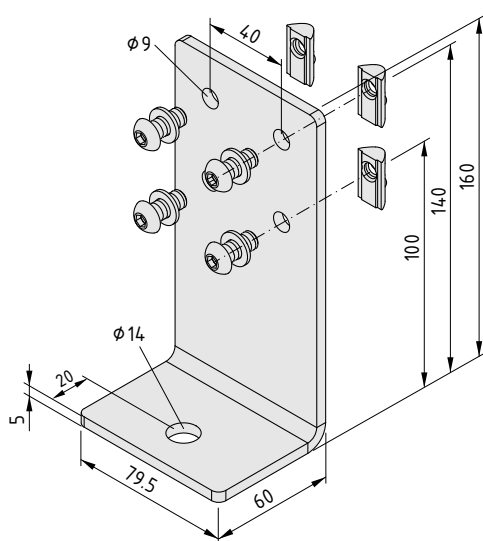
2 Button-Head Screws ISO 7380-M8x18, St, bright zinc-plated

2 T-Slot Nuts V 8 St M8

m = 360.0 g

1 set	0.0.666.50
-------	------------

11



Floor Bracket Set 8 160x60x80 St

Floor Bracket 8 160x60x80 St, white aluminium similar to RAL 9006

4 washers DIN 433-8.4, St, bright zinc-plated

4 Button-Head Screws ISO 7380-M8x18, St, bright zinc-plated

4 T-Slot Nuts V 8 St M8

m = 729.0 g

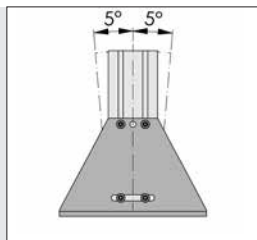
1 set	0.0.666.51
-------	------------



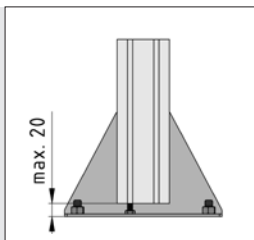
Stand Foot 8 240x160

The cost-effective and robust floor fastener

- Easy to align and stable
- Can be screwed to the floor
- For free-standing enclosures and guards

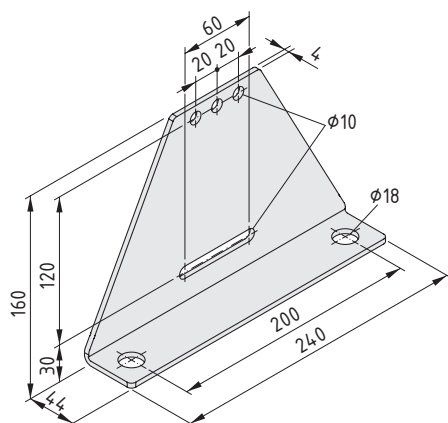


The slot fastening feature near the bottom of the Stand Foot can be used to adjust the angle in order to compensate for uneven floors ($\pm 5^\circ$).



The height can be adjusted by means of a screw inserted into a thread in the core bore in the end face of the stand profile.

Floor-Fastening Sets 386



Stand Foot 8 240x160



St
m = 1.0 kg

black, 1 pce.

0.0.492.47



Adjustable Stand Foot 8

The foot with unrivalled precision

- Several ways to compensate for unevenness
- Even greater stability due to additional support
- Securely anchored to the floor

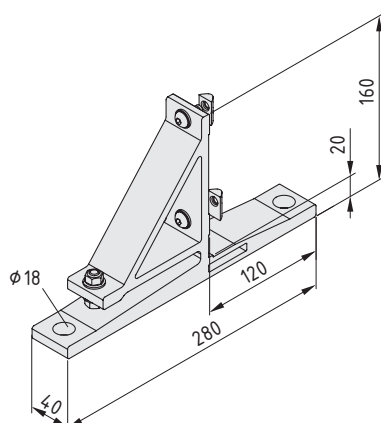


Adjustable Stand Foot 8 can be universally used to provide the Stand Profiles of partitions, tables and rack systems with a stable connection to the floor. Various adjustment options mean that the Adjustable Stand Foot can be adapted to the properties of the floor (height, flatness). The Stand Profile can be tilted as necessary using the hexagon nuts on a threaded bolt ($\pm 3^\circ$). The Stand Profile is adjusted up and down by moving

it along the profile groove. Lateral alignment on the floor is facilitated by the large diameters of the holes for the Floor Fastening Sets.

The through holes for securing to the floor can be accessed when the Adjustable Stand Foot has already been fitted, so that the anchoring holes can be drilled subsequently.

Floor-Fastening Sets 386



Adjustable Stand Foot 8



Adjustable Stand Foot, Al, anodized, natural
 2 T-Slot Nuts 8 St M8, St, bright zinc-plated
 2 Button-Head Screws ISO 7380-M8x20, St, bright zinc-plated
 2 Hexagon Nuts DIN 934-M8, St, bright zinc-plated
 4 Washers DIN 125-8,4, St, bright zinc-plated
 Button-Head Screw ISO 7380-M8x45, St, bright zinc-plated
 m = 795.0 g

1 set

0.0.486.17



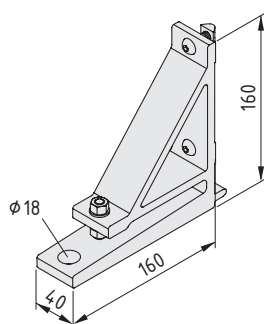
Adjustable Stand Foot Side Brace 8

- For supporting an Adjustable Stand Foot from the side
- Mechanism for adjusting angle of incline



Adjustable Stand Foot Side Brace 8 is used to provide lateral support to an enclosure erected using Adjustable Stand Foot 8. It is inserted into Adjustable Stand Foot 8 and is also screwed to the Stand Profile.

The inclination is set in the same way as the Adjustable Stand Foot, using a set screw. Used in conjunction with Adjustable Stand Foot 8, the Stand Profile can then be aligned in all planes.



Adjustable Stand Foot Side Brace 8



Adjustable Stand Foot Side Brace, Al, anodized, natural
 2 T-Slot Nuts 8 St M8, St, bright zinc-plated
 2 Button-Head Screws ISO 7380-M8x20, St, bright zinc-plated
 2 Hexagon Nuts DIN 934-M8, St, bright zinc-plated
 4 Washers DIN 125-8,4, St, bright zinc-plated
 Button-Head Screw ISO 7380-M8x45, St, bright zinc-plated
 m = 655.0 g

1 set

0.0.486.18



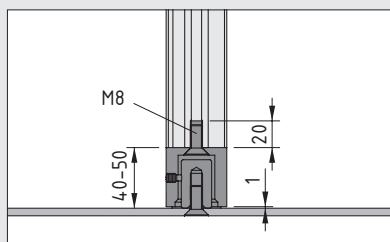
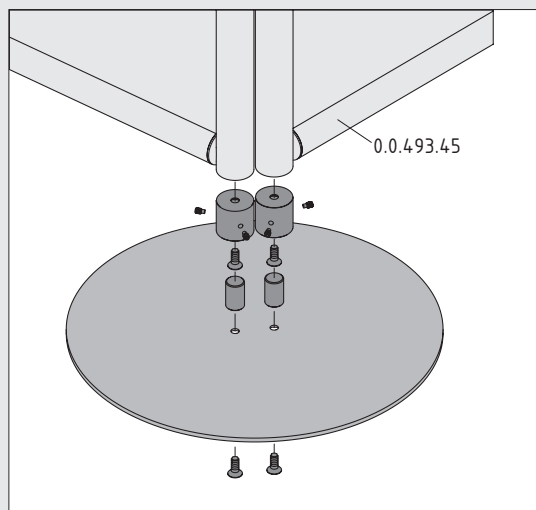
Partition Base Plates

- Stable fastening with outstanding stability
- For one or two partition elements
- The height of each wall segment can be adjusted separately

Create sound protection and screening using mobile partition walls and mark out designated routes and areas. The Partition Base Plates D400 are free-standing, lightweight elements that can be rapidly deployed.

A partition built with Profiles 8 D40 is an elegant solution. The circular cross-section of the Partition Base Plate is a perfect match to the design of the Adapters and Stand Profiles. Two profiles can be fitted close together on Partition Base Plate D400 2z – and Partition Adapter D40 allows them to be swivelled to any angle and secured in position.

All that is needed to attach the Partition Base Plate is a thread in the core bore of a Profile 8.

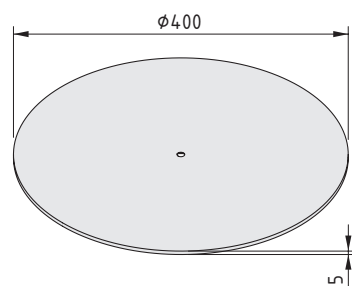


Partition Adapter D40 allows users to adjust the height and angle of each individual partition segment.

Tip:

Two Profiles D40 can be connected at the upper end of the partition using Flat Bracket 8 D40/D40 (0.0.628.63) – the Profiles are fixed in parallel and kept at a constant distance.



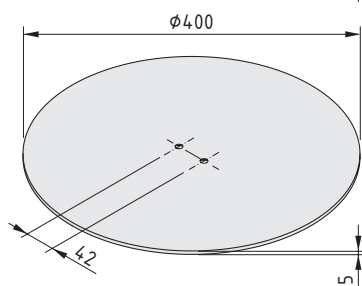
**Partition Base Plate D400 z**

St

m = 5.0 kg

white aluminium, similar to RAL 9006, 1 pce.

0.0.641.36

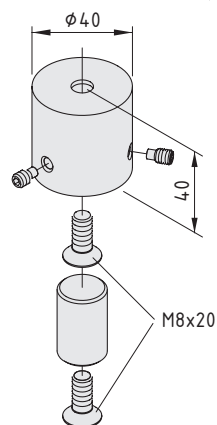
**Partition Base Plate D400 2z**

St

m = 5.0 kg

white aluminium, similar to RAL 9006, 1 pce.

0.0.641.41

**Partition Adapter D40**

Pin, St, bright zinc-plated

Sleeve, Al, white aluminium, similar to RAL 9006

2 Countersunk Screws DIN 7991 M8x20, St, bright zinc-plated

3 grub screws DIN 915 M6x10, St, bright zinc-plated

m = 185.0 g

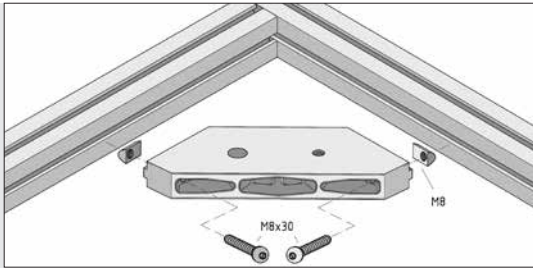
1 set

0.0.641.42

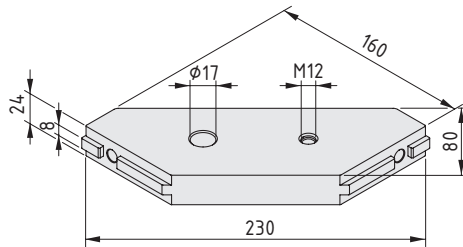


Floor-Fixing Plate

- For floor mounting machine frames
- Levelling via set screw
- Reinforce the rigidity of machine frames



Floor-Fastening Sets 386



Floor-Fixing Plate 8

Die-cast Al
 $F_{max} = 10,000 \text{ N}$
 $m = 610.0 \text{ g}$

black, 1 pce.

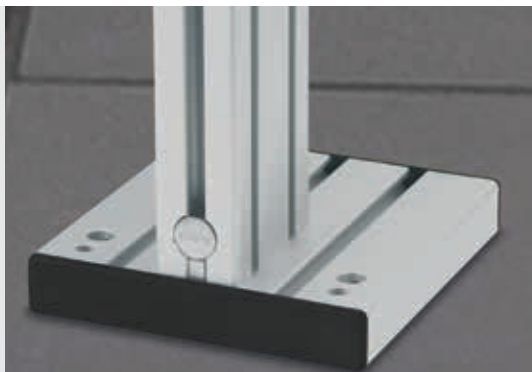
0.0.388.12

Fastening Set 8 on profile side for Floor-Fixing Plate 8

2 Button-Head Screws ISO 7380-M8x30, St, bright zinc-plated
 2 T-Slot Nuts 8 St M8, bright zinc-plated
 $m = 44.0 \text{ g}$

1 set

0.0.404.19

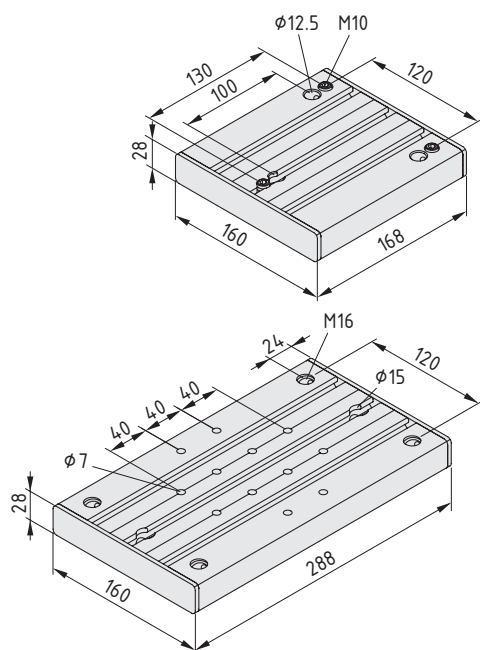


Base Plates

- Stable termination for Stand Profiles
- Levelling via set screws



Floor-Fastening Sets  386



Base Plate 8 160



Base plate, Al, anodized, natural
2 Caps 8 160x28, PA, black
3 grub screws DIN 915-M10x30, St, bright zinc-plated
3 Floor-Fastening Sets M10x135
m = 1.6 kg

1 set	0.0.026.17
-------	------------

Base Plate 8 280



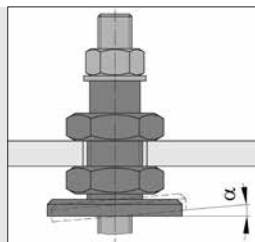
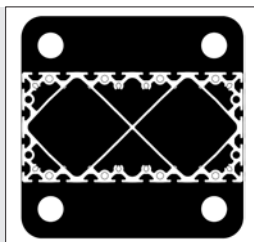
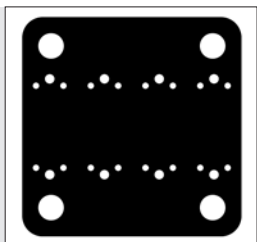
Base plate, Al, anodized, natural
2 Caps 8 160x28, PA, black
m = 2.3 kg

1 pce.	0.0.388.69
--------	------------



Base Plate 8 320x320 St

- Extremely strong machine base
- For anchoring heavy-duty frames
- Alignment via Levelling Feet



Base Plate 8 320x320 St has been prepared for screwing into the core bores of the profiles (8 countersinks for Hexagon Socket Head Cap Screws DIN 7984-M12 in Profiles 8 320x160 and 8 160x160, and countersinks for Hexagon Socket Head Cap Screws DIN 912-M8 in Profiles 8 160x160 8EN or 8 240x160 8EN).

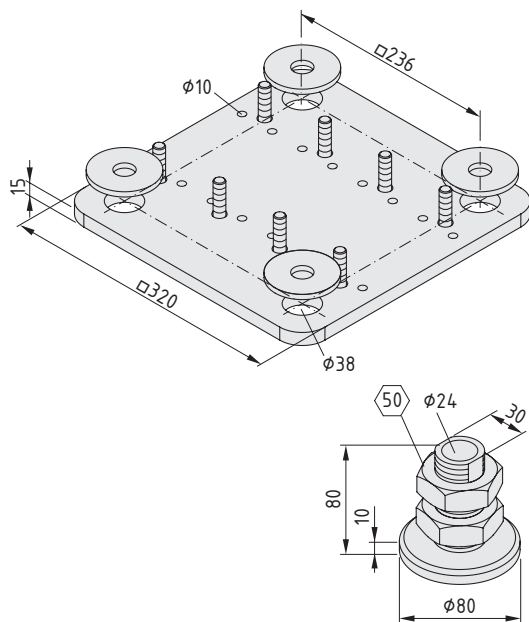
It is fastened to the floor using bores $\varnothing 38$ mm and washers DIN 440.

Floor-Fastening Sets 386

The lower hexagon nut (50 A/F) is adjusted to set the height of the Levelling Feet. The hollow stud must be prevented from twisting (30 A/F).

Any unevenness is compensated for by means of a ball socket in the base plate ($\alpha = \pm 2.5^\circ$).

11



Base Plate 8 320x320 St



St, painted
8 Cap Screws DIN 7984-M12x45, St, bright zinc-plated
4 washers DIN 440-R22, St, black
m = 11.7 kg

1 set

0.0.476.70

Levelling Feet D80, M33x80

4 base plates, St, bright zinc-plated
4 hollow studs, St, bright zinc-plated
8 hexagon nuts DIN 439-M33x2, St, bright zinc-plated
m = 3.5 kg

1 set

0.0.480.91



Castors

- Wide range of sizes and materials
- With integrated connecting plate or for custom installation
- ESD-safe versions also available



The item Castors make frames mobile. They ensure that custom transport trolleys and intralogistics solutions can be built with ease and are available in a wide range of models with different load limits and functions to suit various tasks.

Castors with an integrated connecting plate are easy to fit and can be connected directly to a construction and put to use immediately. Alternatively, Castors can be anchored into the end face of a profile via a threaded bore. There are also numerous Base Plate/Transport Plates that can be used to fit separate Castors to a groove.

Castors marked with the ESD symbol are at least antistatic to DIN EN 12530 (wheels and castors) and thus also satisfy the requirements of DIN EN 613 40 (electrostatics) with a discharge resistance of $< 10^7$ Ohm.



Low loads: Double castors with a plastic housing offer a simple and manoeuvrable solution for applications that involve low loads.



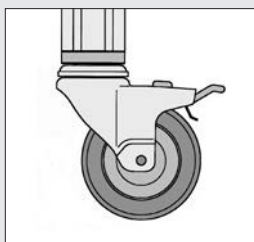
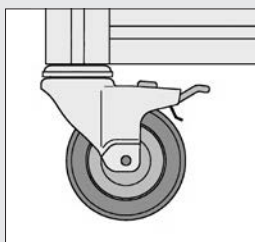
Normal loads: Castors with a metal housing are available as fixed and swivel Castors. Double-brakes can be added if required to ensure stability.



High loads: Special Castors with a high load-carrying capacity of up to 450 kg are available for heavy transported goods.



Convenient installation: Models with integrated connecting plates are especially easy to fasten to a frame.



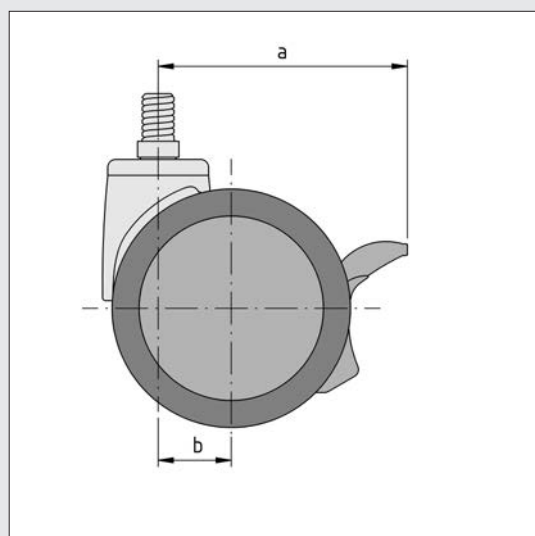
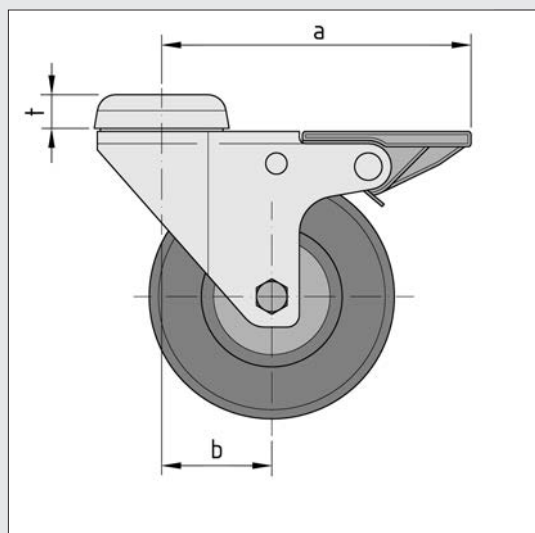
The castors can be secured in the end faces of all Profile Lines by means of a thread in the core bore (counter boring and tapping may be required) or by using Base Plates/Transport Plates (Section 2.3 Accessories for Floor Elements).

The castors can be fitted to the groove side of the profiles using appropriate Base Plates/Transport Plates (thread lengths may need to be compensated by washers DIN 125). A combination with Floor-Fastening Plate 8 is also possible for specific applications.

The specified carrying capacities are maximum values under ideal operating conditions, at walking speed (max. 4 km/h) and over smooth and flat surfaces. If the floor is uneven and weight badly distributed, the load on the castor should be calculated in accordance with the following formula:

$$F = \frac{\text{dead weight} + \text{load}}{3}$$

Castors, Swivel and Fixed



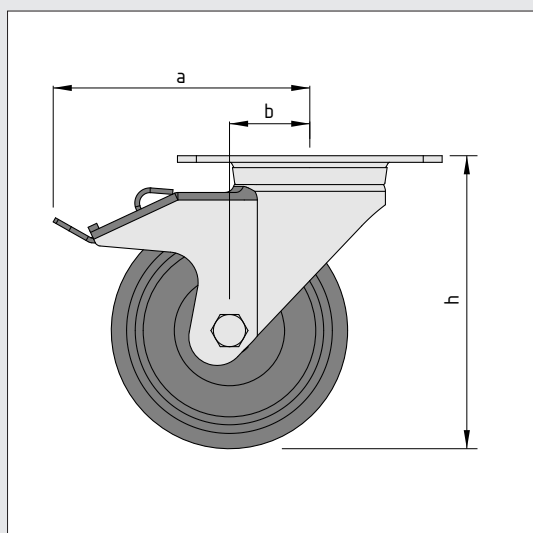
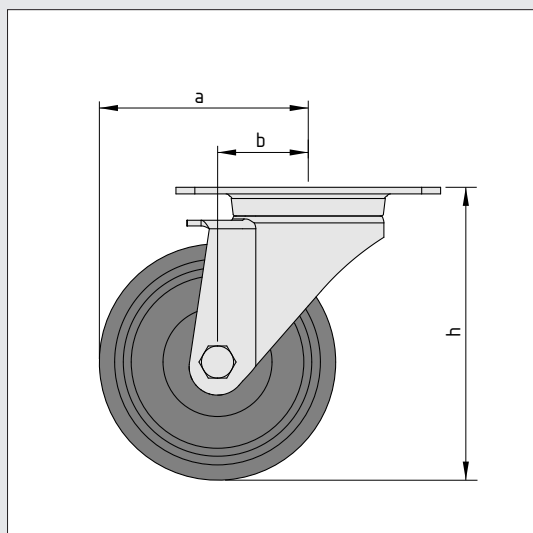
	Radius of swivel (a)	Offset (b)	Thickness (t)
Castor D65 swivel	57.0 mm	20.0 mm	-
Castor D65 swivel with brake	68.0 mm	20.0 mm	-
Castor D75 PA swivel	70.0 mm	23.0 mm	-
Castor D75 PA swivel with double-brake	80.0 mm	23.0 mm	-
Castor D75 swivel	70.0 mm	30.5 mm	5 mm
Castor D75 swivel with double-brake	85.0 mm	30.5 mm	5 mm
Castor D75 fixed	-	-	2 mm
Castor D80 swivel	70.0 mm	29.0 mm	12 mm
Castor D80 swivel with double-brake	95.5 mm	29.0 mm	12 mm
Castor D100 swivel	90.0 mm	40.0 mm	16 mm
Castor D100 swivel with double-brake	130.0 mm	40.0 mm	16 mm
Castor D100 fixed	-	-	5 mm
Castor D125 swivel	102.5 mm	40.0 mm	9 mm
Castor D125 swivel with double-brake	130.0 mm	40.0 mm	9 mm
Castor D125 fixed	-	-	14 mm
Castor D125 swivel, heavy-duty	108.0 mm	45.0 mm	6 mm
Castor D125 swivel with double-brake, heavy-duty	108.0 mm	45.0 mm	6 mm
Castor D125 swivel with double-brake N, heavy-duty	136.0 mm	45.0 mm	6 mm
Castor D125 fixed, heavy-duty	-	-	6 mm

Resistance of tyres	Castor Line D65/D75 PA		Castor Line D75		Castor Line D80		Castor Line D100		Castor Line D125		Castor Line D125 heavy-duty
(x = yes; - = no)	PU		TPE		TPE		TPE		TPE		PU
Water	x	x	x	x	x	x	x	x	x	x	x
Salt water	x	x	x	x	x	x	x	x	x	x	-
Road-salt solution	x	x	x	x	x	x	x	x	x	x	-
Oils	x	x	x	x	-	-	x	x	x	x	x
Animal and vegetable fats	x	x	-	-	-	-	-	-	-	-	x
Diesel oil	x	x	-	-	-	-	-	-	-	-	x
Petrol	x	x	-	-	-	-	-	-	-	-	x
Acidic cleaning agents	-	-	x	x	x	x	x	x	x	x	-
Soap solutions up to approx. 50°C	x	x	x	x	x	x	x	x	x	x	x



The Castors have good rolling properties and a high load-carrying capacity and are able to withstand most environmental influences.

Antistatic Castors can also be supplied specifically for use in the electronics sector. They have appropriate tyres and a continuously conductive wheel/casing. The discharge resistance of the antistatic model is $10^5 \Omega$.

Swivel and fixed Castors with integrated connecting plate



	Radius of swivel (a)	Offset (b)	Height (h)
Castor D100 swivel 120x40	90.0 mm	40.0 mm	132.0 mm
Castor D100 swivel 140x110	95.0 mm	45.0 mm	130.0 mm
Castor D100 swivel 140x110 with optional Swivel Lock	150.0 mm	45.0 mm	130.0 mm
Castor D100 swivel 120x40 with brake	130.0 mm	40.0 mm	132.0 mm
Castor D100 swivel 140x110 with brake	137.0 mm	45.0 mm	130.0 mm
Castor D100 fixed 140x110	-	-	130.0 mm
Castor D125 swivel 120x40	102.5 mm	40.0 mm	158.0 mm
Castor D125 swivel 140x110	110.0 mm	48.0 mm	155.0 mm
Castor D125 swivel 140x110 with optional Swivel Lock	150.0 mm	48.0 mm	155.0 mm
Castor D125 swivel 120x40 with brake	130.0 mm	40.0 mm	158.0 mm
Castor D125 swivel 140x110 with brake	137.0 mm	48.0 mm	155.0 mm
Castor D125 fixed 140x110	-	-	155.0 mm
Castor D160 swivel 140x110	140.0 mm	60.0 mm	195.0 mm
Castor D160 swivel 140x110 with optional Swivel Lock	170.0 mm	60.0 mm	195.0 mm
Castor D160 swivel 140x110 with brake	168.0 mm	60.0 mm	195.0 mm
Castor D160 fixed 140x110	-	-	195.0 mm
Castor D200 swivel 140x110	163.0 mm	65.0 mm	235.0 mm
Castor D200 swivel 140x110 with optional Swivel Lock	170.0 mm	65.0 mm	235.0 mm
Castor D200 swivel 140x110 with brake	184.0 mm	65.0 mm	235.0 mm
Castor D200 fixed 140x110	-	-	235.0 mm

Resistance of tyres	Castor lines D100 120x40 / D125 120x40		Castor lines D100/125/160/200	
(x = yes; - = no)	TPE		TPU	
Water	x	x	x	x
Salt water	x	x	x	x
Road-salt solution	x	x	-	-
Oils	x	x	x	x
Animal and vegetable fats	x	x	x	x
Diesel oil	-	-	x	x
Petrol	-	-	x	x
Acidic cleaning agents	-	-	-	-
Soap solutions up to approx. 50°C	x	x	x	x



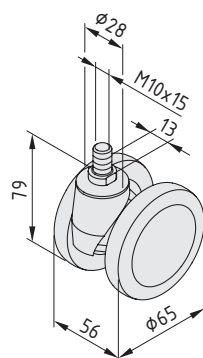
Castor Line D65

- Double castor with a carrying capacity of up to 50 kg
- Available in ESD-safe versions and with brake



The following applies to all the products below:

Housing PA, black
Swivelling axis with ball bearing,
Wheel axle with slide bearing,
Threaded pin, adhesive coated,
Dust shield,
Carrying capacity 50 kg/castor
Twin tyres PU, 80 Sh A, black



Castor D65 swivel

m = 167.0 g

1 pce.

0.0.444.94

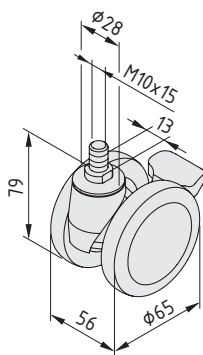
Castor D65 swivel antistatic



m = 172.0 g

1 pce.

0.0.444.92



Castor D65 swivel brake

m = 178.0 g

1 pce.

0.0.444.95

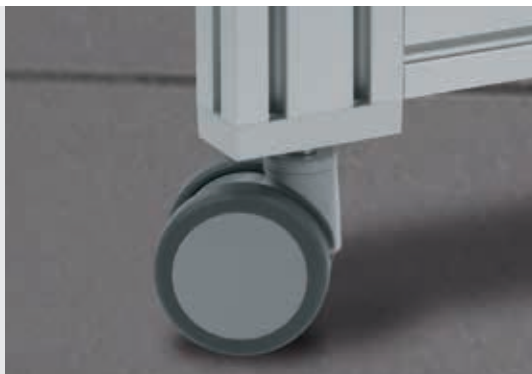
Castor D65 swivel brake antistatic



m = 183.0 g

1 pce.

0.0.444.93



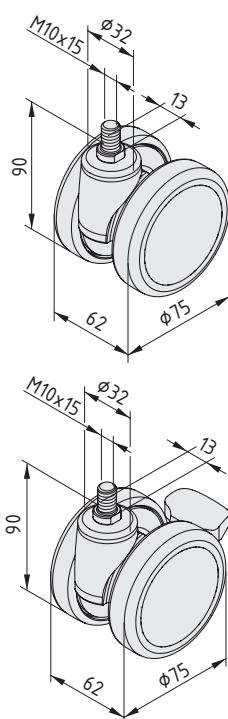
Castor Line D75 PA

- Double castor with a carrying capacity of up to 60 kg
- Available in ESD-safe versions and with brake



The following applies to all the products below:

Casing PA, grey
 Swivelling axis with ball bearing
 Wheel axle with slide bearing
 Threaded pin protected against torsion
 Dust shield
 Carrying capacity 60 kg/castor
 Twin tyres PU, 80 Sh A, grey



Castor D75 PA swivel

m = 220.0 g	
1 pce.	0.0.605.45

Castor D75 PA swivel antistatic



m = 230.0 g	
1 pce.	0.0.605.47

Castor D75 PA swivel double-brake

m = 235.0 g	
1 pce.	0.0.605.46

Castor D75 PA swivel double-brake antistatic



m = 245.0 g	
1 pce.	0.0.605.48



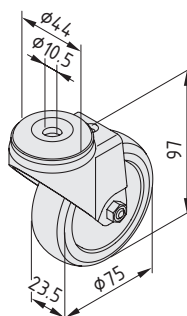
Castor Line D75

- Castor with a carrying capacity of up to 60 kg
- Available as swivel castors or fixed castors with anti-torsion feature
- Durable due to ball bearing
- Available in ESD-safe versions and with double brake



The following applies to all the products below:

Steel sheet casing bright zinc-plated, black
Swivelling axis with sealed ball bearing,
Wheel axle with sealed ball bearing,
Dust shield,
Carrying capacity 60 kg/castor
Tyre TPE, track-free, 80 Sh A, grey



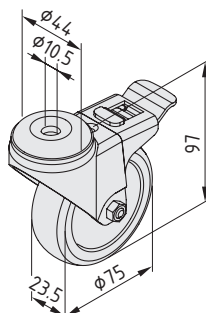
Castor D75 swivel

m = 306.0 g	
1 pce.	0.0.420.14

Castor D75 swivel antistatic



m = 285.0 g	
1 pce.	0.0.420.15



Castor D75 swivel with double-brake

m = 340.0 g	
1 pce.	0.0.420.16

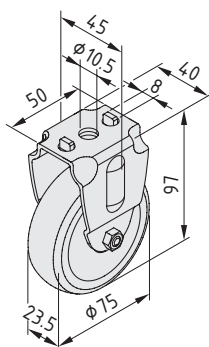
Castor D75 swivel with double-brake antistatic



m = 317.0 g	
1 pce.	0.0.420.17

Materials used in all the following products:

Sheet-metal housing, bright zinc-plated, black
Wheel axle with ball bearing,
Anti-torsion block,
Dust shield, carrying capacity 60 kg/castor
Tyres TPE, 80 Sh A, grey



Castor D75 fixed

m = 260.0 g	
1 pce.	0.0.420.12

Castor D75 fixed antistatic



m = 240.0 g	
1 pce.	0.0.420.13



Castor Line D80

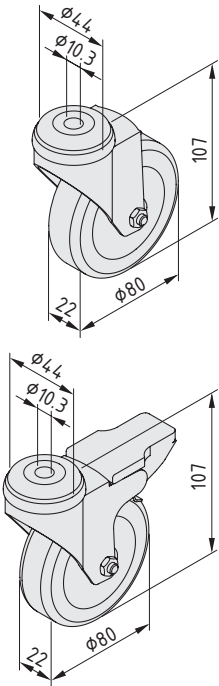
Stainless steel casing

- Castor with a carrying capacity of up to 90 kg
- Available in ESD-safe versions and with double brake



The following applies to all the products below:

Sheet-metal housing, stainless
Swivelling axis with ball bearing
Wheel axle with plain bearing,
Dust shield, carrying capacity 90 kg/castor
Tyres TPE, 85 Sh A, grey



Castor D80 swivel

m = 330.0 g	
stainless, 1 pce.	1.0.001.08

Castor D80 swivel, antistatic

m = 310.0 g	
stainless, 1 pce.	1.0.001.97

Castor D80 swivel with double-brake

m = 375.0 g	
stainless, 1 pce.	1.0.001.09

Castor D80 swivel with double-brake, antistatic

m = 355.0 g	
stainless, 1 pce.	1.0.001.98



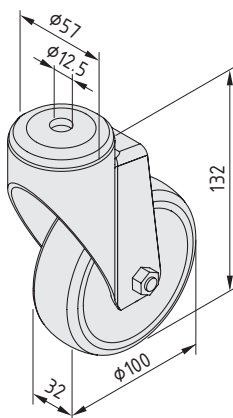
Castor Line D100

- Castor with a carrying capacity of up to 80 kg
- Available as swivel castors or fixed castors with anti-torsion feature
- Dual ball-bearing wheels
- Available in ESD-safe versions and with double brake



The following applies to all the products below:

Steel sheet casing bright zinc-plated, black
Swivelling axis with sealed ball bearing,
Wheel axle with sealed ball bearing,
Carrying capacity 80 kg/castor
Tyre TPE, track-free, 90 Sh A, grey



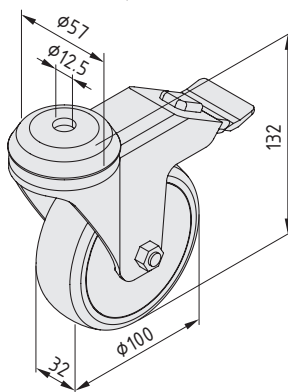
Castor D100 swivel

m = 660.0 g	
1 pce.	0.0.602.38

Castor D100 swivel antistatic



m = 660.0 g	
1 pce.	0.0.602.39



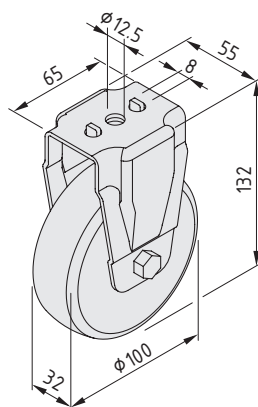
Castor D100 swivel with double-brake

m = 780.0 g	
1 pce.	0.0.602.40

Castor D100 swivel with double-brake antistatic



m = 780.0 g	
1 pce.	0.0.602.41



Castor D100 fixed

m = 580.0 g	
1 pce.	0.0.603.26

Castor D100 fixed antistatic



m = 580.0 g	
1 pce.	0.0.605.29

The following applies to all the products below:

Steel sheet casing bright zinc-plated, black
Wheel axle with sealed ball bearing,
Anti-torsion element,
Carrying capacity 80 kg/castor
Tyre TPE, track-free, 90 Sh A, grey



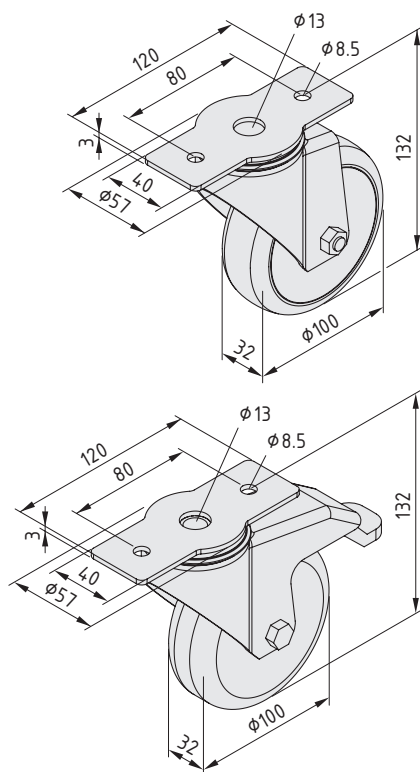
Castor Line D100 swivel with Connecting Plate 120x40

- Castor and connecting plate in one
- Carrying capacity up to 80 kg
- Narrow connecting plate with two holes
- Available in ESD-safe versions and with double brake



The following applies to all the products below:

Steel sheet casing bright zinc-plated, black
Swivelling axis with sealed ball bearing,
Wheel axle with sealed ball bearing,
Dust shield, carrying capacity 80kg/castor
Tyre TPE, track-free, 80 Sh A, grey



Castor D100 swivel 120x40

m = 641.0 g

1 pce.

0.0.633.43

Castor D100 swivel 120x40 antistatic



m = 654.0 g

1 pce.

0.0.633.44

Castor D100 swivel with double-brake 120x40

m = 761.0 g

1 pce.

0.0.639.13

Castor D100 swivel with double-brake 120x40 antistatic



m = 773.0 g

1 pce.

0.0.633.45



Castor Line D100 swivel with Connecting Plate 140x110

- Castor and connecting plate in one
- Carrying capacity up to 200 kg
- Wide connecting plate with four holes
- Available in ESD-safe versions and with double brake



The following applies to all the products below:

Fork St, bright zinc-plated
Wheel axle with ball bearing
Dust shield
Wheel body PA
Tyre TPU, 94 Sh A, grey
Load-carrying capacity 200 kg/Castor

Castor D100 swivel 140x110

m = 1.1 kg	
1 pce.	0.0.667.16

Castor D100 swivel 140x110 antistatic



m = 1.1 kg	
1 pce.	0.0.667.17

Castor D100 swivel with double-brake 140x110

m = 1.4 kg	
1 pce.	0.0.667.18

Castor D100 swivel with double-brake 140x110 antistatic



m = 1.4 kg	
1 pce.	0.0.667.19

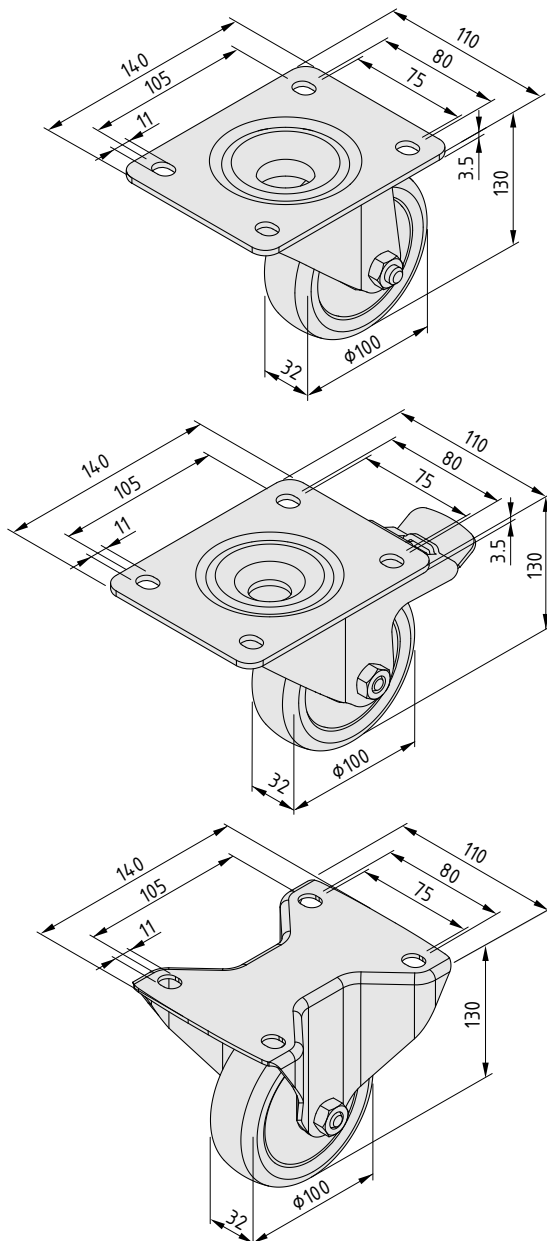
Castor D100 fixed 140x110

m = 800.0 g	
1 pce.	0.0.667.20

Castor D100 fixed 140x110 antistatic



m = 800.0 g	
1 pce.	0.0.667.21





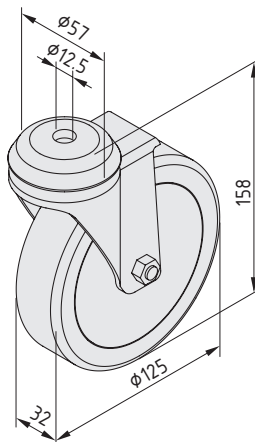
Castor Line D125

- Stable castors with up to 100 kg carrying capacity
- Available as swivel castors or fixed castors with anti-torsion feature
- Dual ball-bearing wheels
- Available in ESD-safe versions and with double brake



The following applies to all the products below:

Steel sheet casing bright zinc-plated, black
 Swivelling axis with sealed ball bearing,
 Wheel axle with sealed ball bearing,
 Dust shield,
 Carrying capacity 100 kg/castor
 Tyre TPE, track-free, 80 Sh A, grey



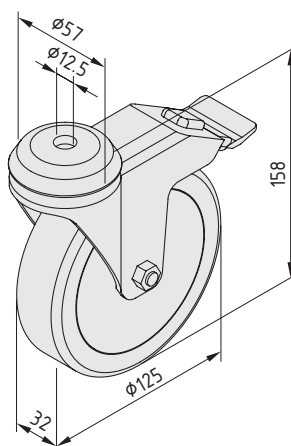
Castor D125 swivel

m = 710.0 g	
1 pce.	0.0.418.08

Castor D125 swivel antistatic



m = 960.0 g	
1 pce.	0.0.418.09



Castor D125 swivel with double-brake

m = 860.0 g	
1 pce.	0.0.418.10

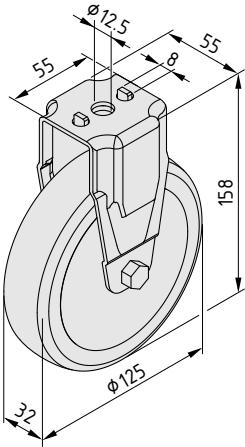
Castor D125 swivel with double-brake antistatic



m = 1.1 kg	
1 pce.	0.0.418.11

The following applies to all the products below:

- Steel sheet casing bright zinc-plated, black
- Wheel axle with sealed ball bearing,
- Anti-torsion element,
- Dust shield,
- Carrying capacity 100 kg/castor
- Tyre TPE, track-free, 80 Sh A, grey



Castor D125 fixed		
m = 550.0 g		
1 pce.		0.0.418.06
Castor D125 fixed antistatic		
m = 780.0 g		
1 pce.		0.0.418.07



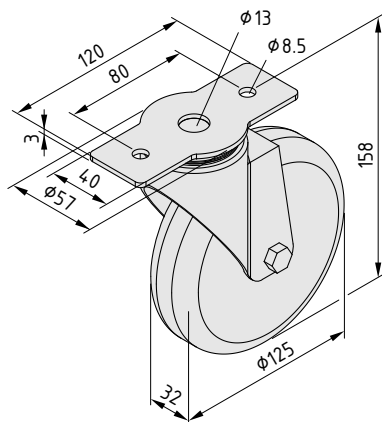
Castor Line D125 swivel with Connecting Plate 120x40

- Combined castor and connecting plate
- Carrying capacity up to 100 kg
- Narrow connecting plate with two holes
- Available in ESD-safe versions and with double brake



The following applies to all the products below:

Steel sheet casing bright zinc-plated, black
Swivelling axis with sealed ball bearing,
Wheel axis with sealed ball bearing,
Dust shield, carrying capacity 100 kg/castor
Tyre TPE, track-free, 80 Sh A, grey



Castor D125 swivel 120x40

m = 704.0 g

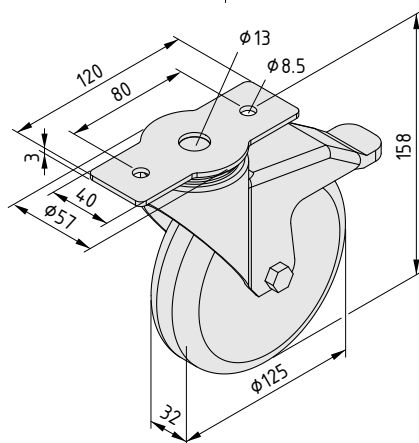
1 pce. 0.0.633.46

Castor D125 swivel 120x40 antistatic



m = 725.0 g

1 pce. 0.0.633.47



Castor D125 swivel with double-brake 120x40

m = 831.0 g

1 pce. 0.0.633.48

Castor D125 swivel with double-brake 120x40 antistatic



m = 851.0 g

1 pce. 0.0.633.49



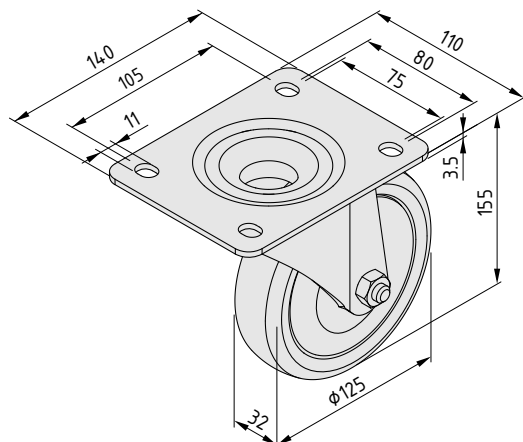
Castor Line D125 swivel with Connecting Plate 140x110

- Castor and connecting plate in one
- Carrying capacity up to 250 kg
- Wide connecting plate with four holes
- Available in ESD-safe versions and with double brake



The following applies to all the products below:

Fork St, bright zinc-plated
Wheel axle with ball bearing
Dust shield
Wheel body PA
Tyre TPU, 94 Sh A, grey
Load-carrying capacity 250 kg/Castor



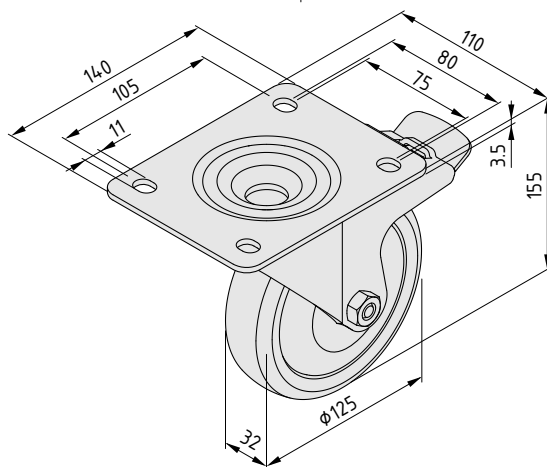
Castor D125 swivel 140x110

m = 1.3 kg	
1 pce.	0.0.667.22

Castor D125 swivel 140x110 antistatic



m = 1.3 kg	
1 pce.	0.0.667.23



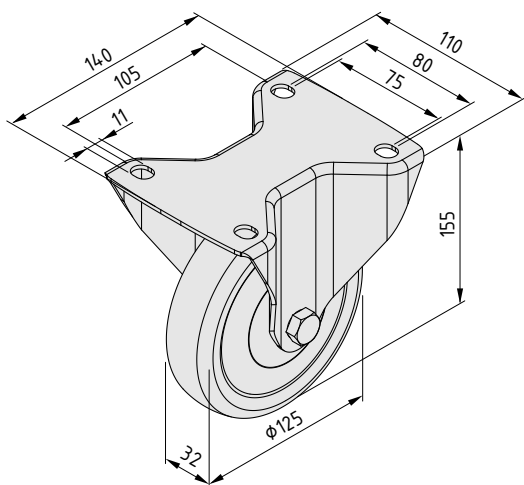
Castor D125 swivel with double-brake 140x110

m = 1.5 kg	
1 pce.	0.0.667.24

Castor D125 swivel with double-brake 140x110 antistatic



m = 1.5 kg	
1 pce.	0.0.667.25

**Castor D125 fixed 140x110**

m = 1.0 kg

1 pce.

0.0.667.26

Castor D125 fixed 140x110 antistatic

m = 1.0 kg

1 pce.

0.0.667.27



Castor Line D125 heavy-duty

Move the heaviest of loads safely and securely

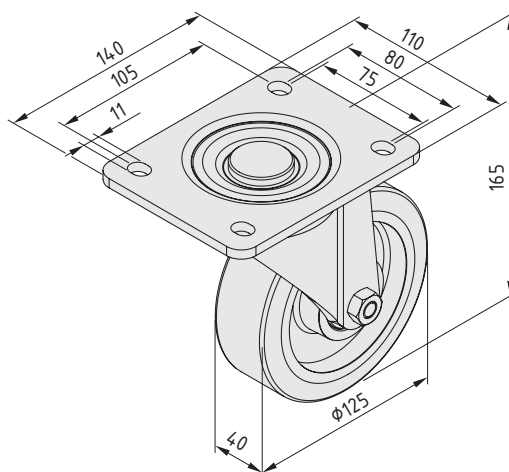
- Ultra heavy-duty castor with a carrying capacity of up to 450 kg
- Available as fixed or swivel castors and with double-brake
- Particularly durable due to heavy-duty ball bearings
- N version allows the brake to be actuated from the trailing side.



Unlike Castor D125 swivel with double-brake heavy duty, the N version allows the lock to be actuated from the trailing side. The combination of two Castors D125 swivel with double-brake and two Castors D125 swivel with double-brake N thus enables a heavy structure on swivel castors to be locked at all four castors, since the locks can always be reached easily. This prevents the structure from being moved or rolling away.

Note: Castor D125 swivel, heavy-duty can be screwed directly to a Line 10 groove. Castor Adapter Plates are available for connecting to constructions built using Lines 8 and 12.

Castor Adapter Plates  384

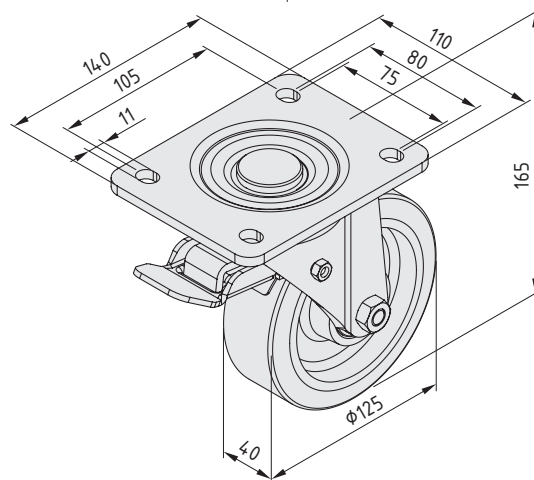


Castor D125 swivel, heavy-duty

Sheet-metal casing, bright zinc-plated, black
Swivelling axis with ball bearing and rotating track seal
Wheel axle with ball bearing
Carrying capacity 450 kg/castor
Tyres PU, 92 Sh A, yellow
m = 3.2 kg

1 pce.

0.0.488.38

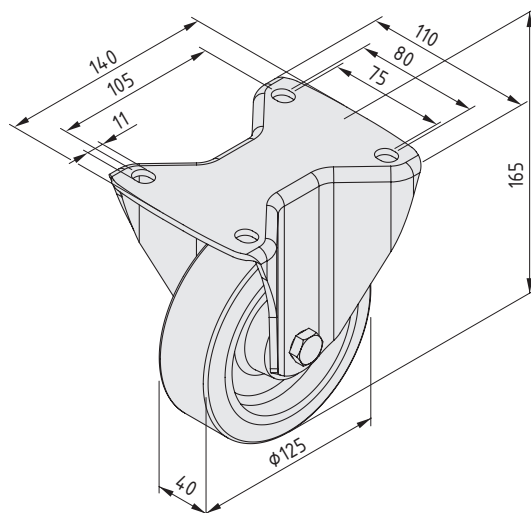


Castor D125 swivel with double-brake, heavy-duty

Sheet-metal casing, bright zinc-plated, black
Swivelling axis with ball bearing and rotating track seal
Wheel axle with ball bearing
Carrying capacity 450 kg/castor
Tyres PU, 92 Sh A, yellow
m = 3.5 kg

1 pce.

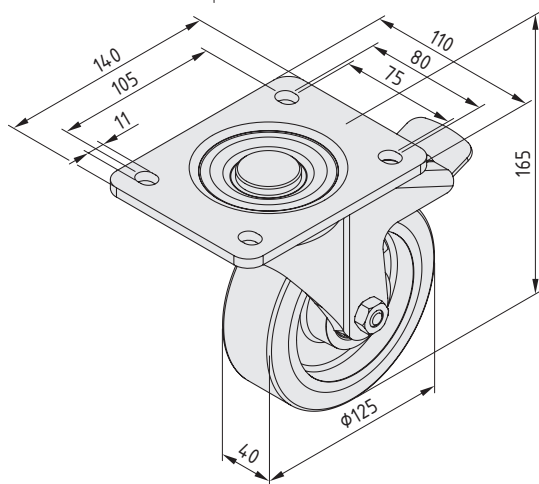
0.0.488.39

**Castor D125 fixed, heavy-duty**

Sheet-metal casing, bright zinc-plated, black
 Wheel axle with ball bearing
 Carrying capacity 450 kg/castor
 Tyres PU, 92 Sh A, yellow
 m = 2.3 kg

1 pce.

0.0.488.40

**Castor D125 swivel with double-brake N, heavy-duty**

Sheet-metal casing, bright zinc-plated, black
 Swivelling axis with ball bearing and rotating track seal
 Wheel axle with ball bearing
 Carrying capacity 450 kg/castor
 Tyres PU, 92 Sh A, yellow
 m = 3.5 kg

1 pce.

0.0.492.18



Castor Line D160 swivel with Connecting Plate 140x110

- Castor and connecting plate in one
- Carrying capacity up to 400 kg
- Wide connecting plate with four holes
- Available in ESD-safe versions and with double brake



The following applies to all the products below:

Fork St, bright zinc-plated
Wheel axle with ball bearing
Dust shield
Wheel body PA
Tyre TPU, 94 Sh A, grey
Load-carrying capacity 400 kg/Castor

Castor D160 swivel 140x110

m = 2.1 kg	
1 pce.	0.0.667.29

Castor D160 swivel 140x110 antistatic

m = 2.1 kg	
1 pce.	0.0.667.30

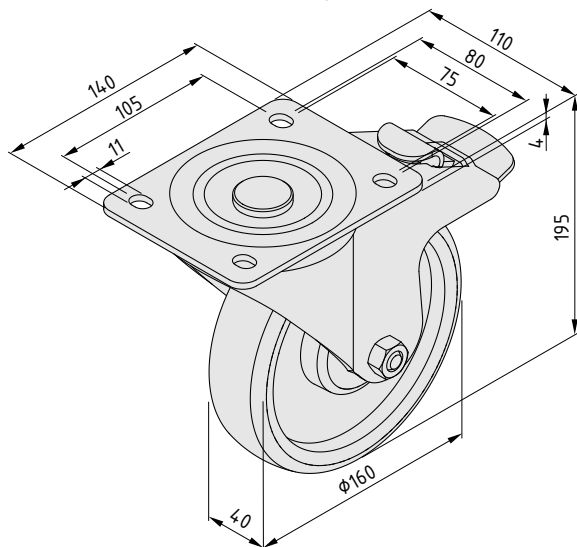
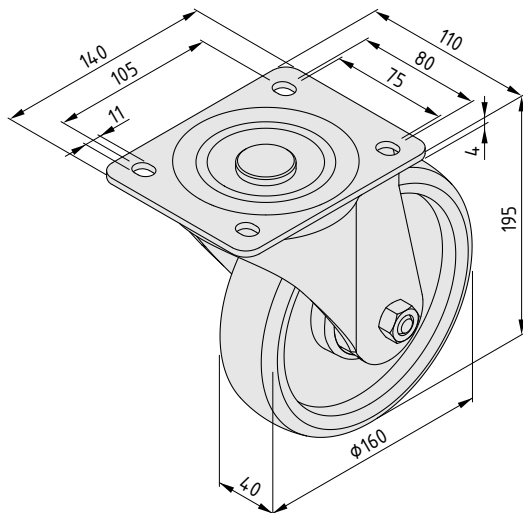


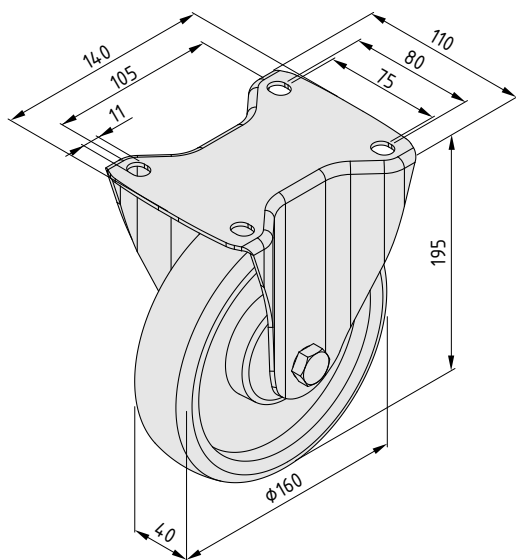
Castor D160 swivel with double-brake 140x110

m = 2.6 kg	
1 pce.	0.0.667.31

Castor D160 swivel with double-brake 140x110 antistatic

m = 2.6 kg	
1 pce.	0.0.667.32



**Castor D160 fixed 140x110**

m = 1.4 kg

1 pce.

0.0.667.33

Castor D160 fixed 140x110 antistatic

m = 1.4 kg

1 pce.

0.0.667.34



Castor Line D200 swivel with Connecting Plate 140x110

- Castor and connecting plate in one
- Carrying capacity up to 400 kg
- Especially large Castor diameter
- Available in ESD-safe versions and with double brake



The following applies to all the products below:

Fork St, bright zinc-plated
Wheel axle with ball bearing
Dust shield
Wheel body PA
Tyre TPU, 94 Sh A, grey
Load-carrying capacity 400 kg/Castor

Castor D200 swivel 140x110

m = 2.4 kg

1 pce. 0.0.667.35

Castor D200 swivel 140x110 antistatic



m = 2.4 kg

1 pce. 0.0.667.36

Castor D200 swivel with double-brake 140x110

m = 2.9 kg

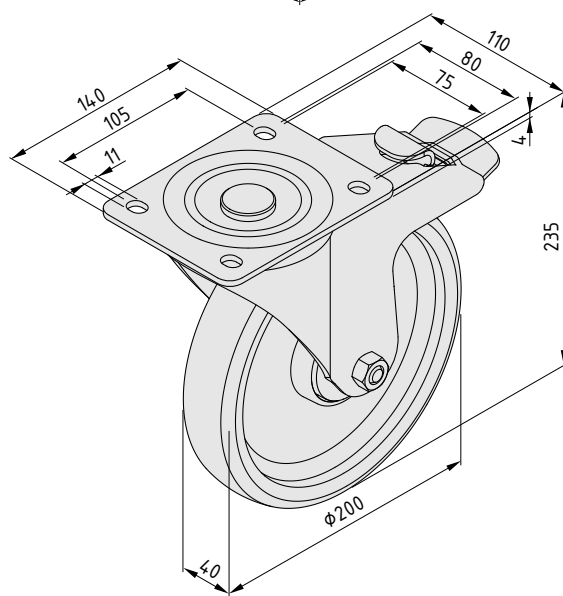
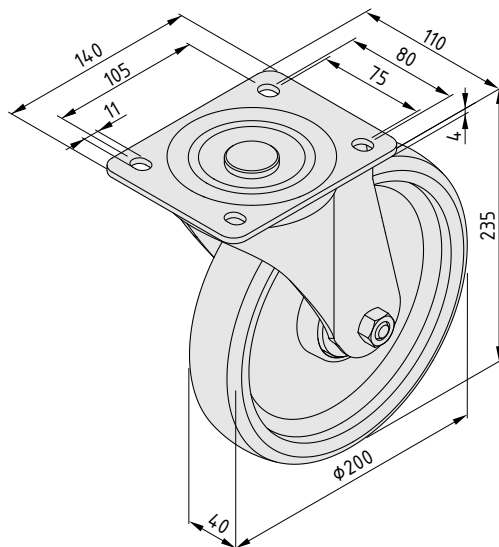
1 pce. 0.0.667.37

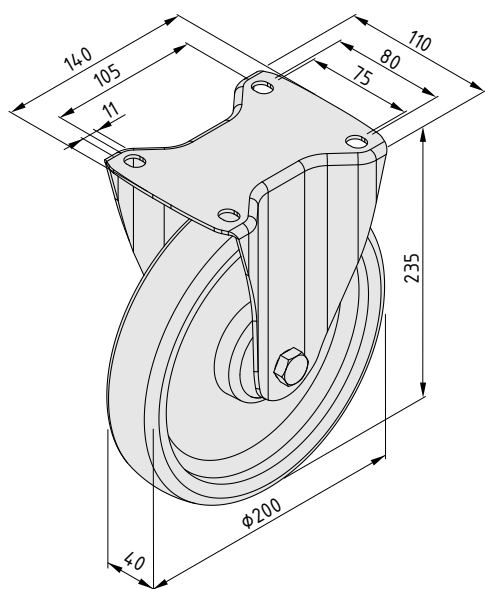
Castor D200 swivel with double-brake 140x110 antistatic



m = 2.9 kg

1 pce. 0.0.667.38



**Castor D200 fixed 140x110**

m = 1.6 kg

1 pce.

0.0.667.39

Castor D200 fixed 140x110 antistatic

m = 1.6 kg

1 pce.

0.0.667.40



Swivel Lock D100/D125 140x110 Swivel Lock D160/D200 140x110

- For Castors with an integrated connecting plate
- Fixes the direction of travel of a Swivel Castor
- Operated by foot

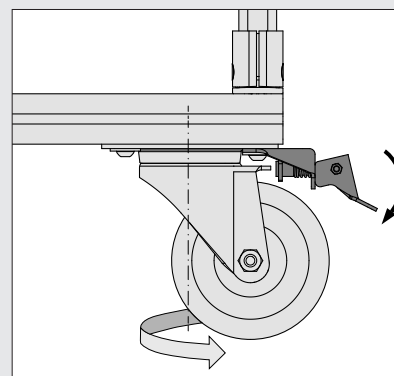
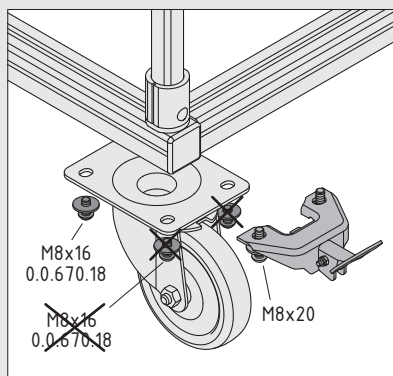
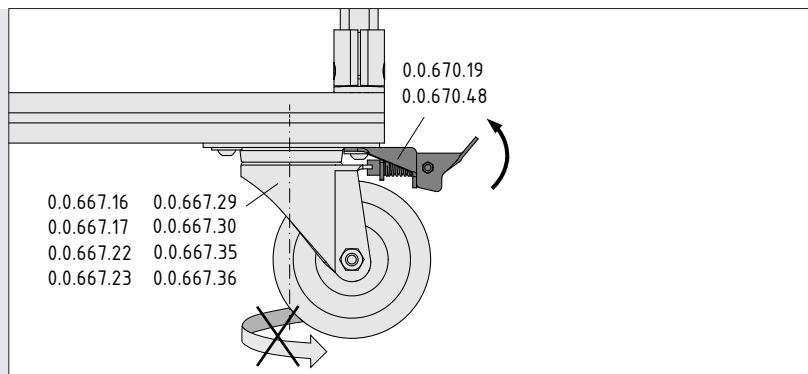


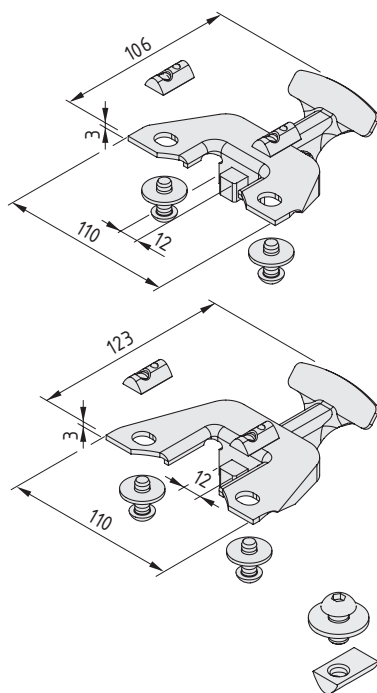
For keeping things on the straight and level: Transport trolleys with four Swivel Castors are easy to manoeuvre by hand, but are difficult to control when being towed in a train. To solve this problem, one pair of Castors has to be fixed to run straight ahead only. This can be achieved using the optional Swivel Lock for Swivel Castors D100, D125, D160 and D200 with a 140x110 connecting plate. It temporarily converts a Swivel Castor into a Fixed Castor. Consequently, users benefit from the advantages of both concepts.

The Swivel Locks are easy to operate by foot, with no need for bending over. The locking mechanism stops the Swivel Castor from rotating out of line. As a result, operators can use a Drawbar to couple a transport trolley to a tugger train and move it around safely. When uncoupling the trolley, simply release the Swivel Lock and the trolley can once again be manoeuvred in all directions in the tightest of spaces.

item supplies Swivel Locks for Castors of various sizes. Swivel Lock D100/D125 and Swivel Lock D160/D200 are available.

Note: Swivel Locks cannot be fitted to a Swivel Castor with double-brake. They cannot be fitted to Castors with the narrow integrated 120x40 connecting plate either.



**Swivel Lock for Castor D100/D125 swivel 140x110**

Swivel Lock for Castor D100/D125 swivel 140x110, St, bright zinc-plated
 2 Button-Head Screws ISO 7380-M8x20, St, bright zinc-plated
 2 washers DIN EN ISO 7093-8.4, St, bright zinc-plated
 2 T-Slot Nuts 8 St M8, bright zinc-plated
 m = 301.0 g

1 set

0.0.670.19

Swivel Lock for Castor D160/D200 swivel 140x110

Swivel Lock for Castor D160/D200 swivel 140x110, St, bright zinc-plated
 2 Button-Head Screws ISO 7380-M8x20, St, bright zinc-plated
 2 washers DIN EN ISO 7093-8.4, St, bright zinc-plated
 2 T-Slot Nuts 8 St M8, bright zinc-plated
 m = 334.0 g

1 set

0.0.670.48

Fastening Set 8 for Castor swivel/fixed 140x110

Button-Head Screw ISO 7380-M8x16, St, bright zinc-plated
 Washer DIN EN ISO 7093-8.4, St, bright zinc-plated
 T-Slot Nut 8 St M8, bright zinc-plated
 m = 25.0 g

1 set

0.0.670.18



Jacking Castors D62

- A steady footing with height compensation
- Easy transport thanks to castor

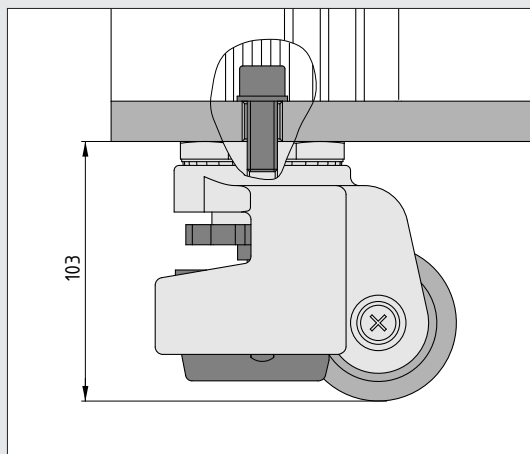
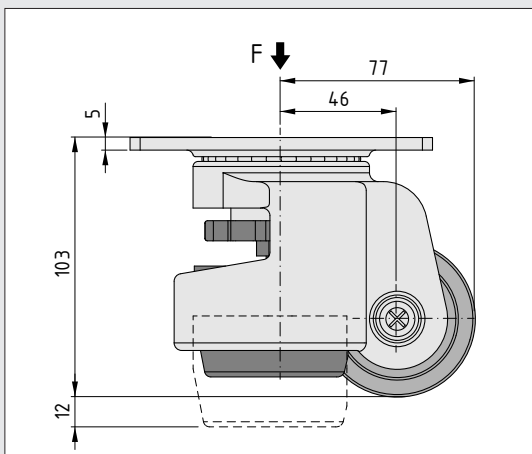


Can you have a footing that is rock solid, and yet movable? You can with the item Jacking Castor! This product combines a castor with a height-adjustable, non-slip knuckle foot. It enables personnel to move work benches, laboratory equipment and racks to precisely where they are needed. And when they get there, the integrated knuckle foot is simply lowered into position to ensure nothing shakes around or slips.

Jacking Castors D62 are designed to accommodate loads up to 3400 N. The height adjustment function can be operated via an integrated adjustment wheel or using a wrench (17 A/F). The knuckle foot can compensate for a difference in height of up to 12 mm.

Spanner 65A/F /
17A/F flat

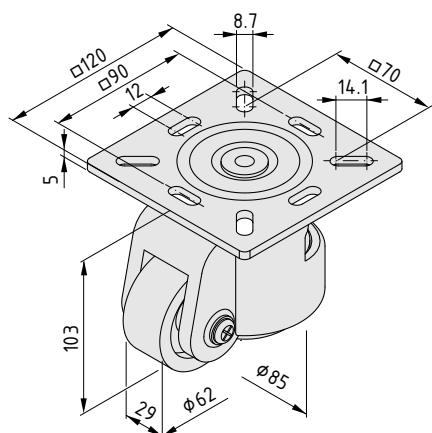
677



Carrying capacity 340 kg/castor

Jacking Castor D62 120x120 features a universal connecting plate that is compatible with frames made of Line 8 profiles. The screw attachment can be made using Button-Head Screw M8x16 (8.0.000.19) and T-Slot Nut 8 St M8 (0.0.026.18).

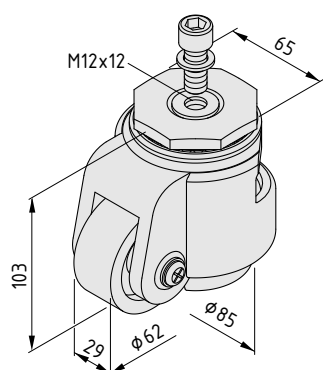
Jacking Castor D62 can be fitted directly to any Base Plate/ Transport Plate with an M12 and M16 thread using the enclosed Hexagon Socket Head Cap Screw and washer.

**Jacking Castor D62 120x120**

Housing, die-cast Al, powder-coated RAL 9006 white aluminium
 Plate, St, bright zinc-plated
 Knuckle Foot, NBR, black
 Castor, PA, black
 m = 1.5 kg

1 pce.

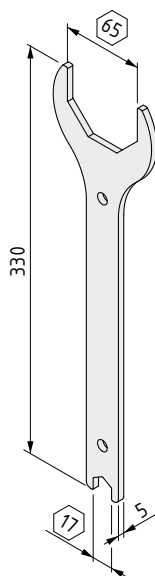
0.0.667.44

**Jacking Castor D62**

Housing, die-cast Al, powder-coated RAL 9006 white aluminium
 Plate, St, bright zinc-plated
 Knuckle Foot, NBR, black
 Castor, PA, black
 Hexagon Socket Head Cap Screw DIN 912-M12x30, St, bright zinc-plated
 Washer DIN 433-13, St, bright zinc-plated
 m = 1.1 kg

1 set

0.0.674.53

**Spanner 65A/F / 17A/F flat**

St, bright zinc-plated
 m = 416.0 g

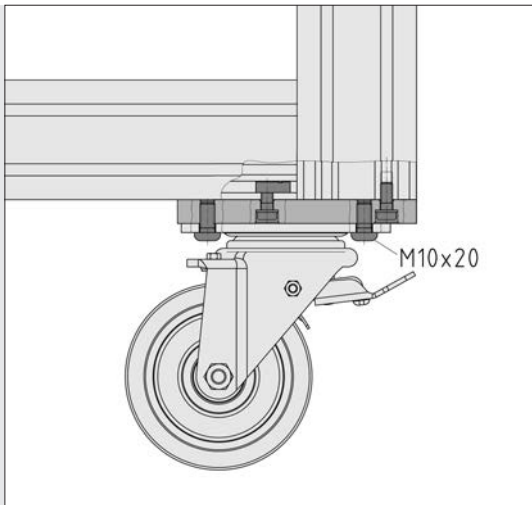
1 pce.

0.0.671.12



Castor Adapter Plates

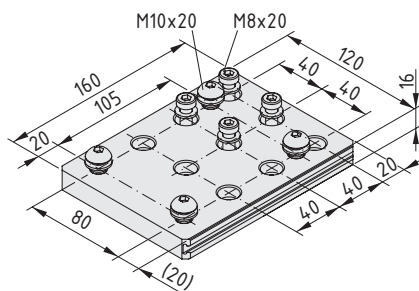
■ For Castor Line D125 heavy-duty



The Castor Adapter Plates for the Castor Line D125 heavy duty have the necessary through-holes in the modular dimensions of Line 8 and 12 Profiles. They also have four fastening threads M10 for castor back-plates in bore dimensions standardised to DIN 8458 - size 3.

The stable back-plate with standard mounting bores provides a reliable means of securing the castors to profile frames using special Castor Adapter Plates. It is screwed in the prepared threads by means of four M10x20 screws per plate.

The Castor Adapter Plates are secured in the core bore using the enclosed Hexagon Socket Head Cap Screws or in the profile groove using T-Slot Nuts for the relevant profile line.



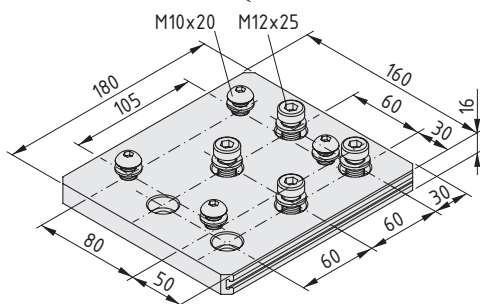
Castor Adapter Plate 8 M10-105x80



Plate, Al, black
4 Cap Screws DIN 6912-M8x20, St, bright zinc-pl.
4 washers DIN 433-8.4, St, bright zinc-plated
4 button-hd. screws ISO 7380-M10x20, St, bright zinc-pl.
4 washers DIN 433-10.5, St, bright zinc-plated
m = 0.8 kg

1 set

0.0.489.21



Castor Adapter Plate 12 M10-105x80



Plate, Al, black
4 Cap Screws DIN 7984-M12x25, St, bright zinc-pl.
4 washers DIN 433-13, St, bright zinc-plated
4 button-hd. screws ISO 7380-M10x20, St, bright zinc-pl.
4 washers DIN 433-10.5, St, bright zinc-plated
m = 1.3 kg

1 set

0.0.007.76



Castor Support 8 80x40

- For fastening Castors D100 and D125
- Ensures structures have a low centre of gravity for increased stability
- Flexible impact protection as standard



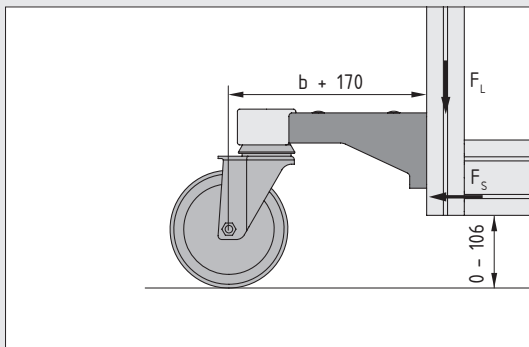
Reduced construction height = lower centre of gravity = increased stability!

The perfect equation for mobile applications thanks to Castor Support 8 80x40.

For fitting D100 or D125 swivel castors (with single central fixing holes), including versions with double-brakes. Castors are always able to rotate around the full 360°. Perfect for connection to the end faces of Profiles 8 80x40. Simply drive M8 threads into the core bores and the Castor Support can be connected in a matter of seconds. All the necessary fastening elements are included in the set – getting constructions on the go fast.



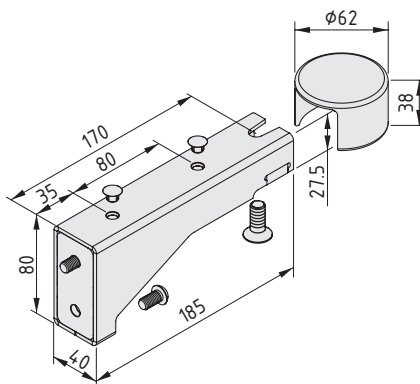
Safety built in – series-standard elastomer impact protection prevents damage and injuries if an accident happens.



Castor Support 8 80x40 ensures that your construction has a low centre of gravity.

$$F_L = \frac{60 \cdot F_S}{b + 170}$$

The permissible load F_L varies according to the permissible tensile load on the groove flanks F_S . Furthermore, F_L must not exceed the carrying capacity of the castor.



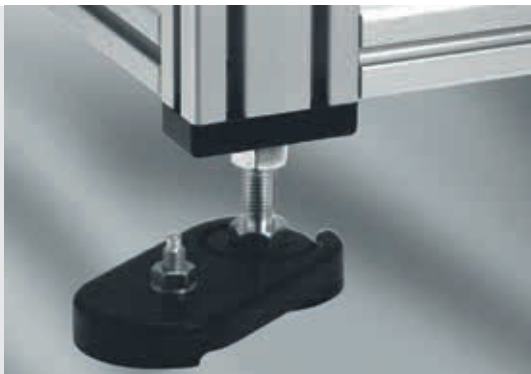
Castor Support 8 80x40



Castor arm, St, white aluminium
Impact Buffer, PUR, grey
2 Button-Head Screws ISO 7380-M8x16, St, bright zinc-plated
Countersunk Screw DIN 7991-M10x25, St, bright zinc-plated
2 protective plugs, PE, grey
m = 750.0 g

1 set

0.0.642.76

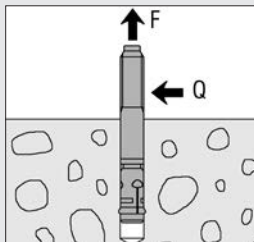


Floor-Fastening Sets

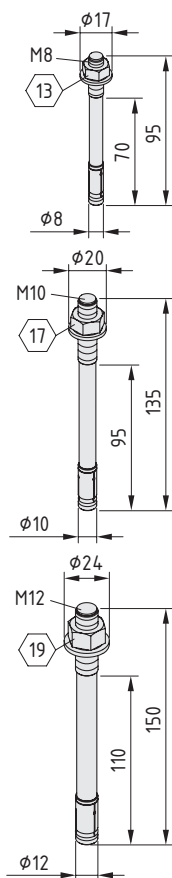
- Special bolts for anchoring in floors and walls
- Particularly suitable for use in concrete

The Floor-Fastening Sets are used for floor and wall fastening of Adjustable Feet, Base Plates, Floor-Fixing Plates, Foot Clamps and other components.

They are very suitable for use in concrete and can also be used in natural stone (dense structure).



Floor-Fastening Set	$F_{\max.}$	$Q_{\max.}$
M8x95	1,650 N	4,250 N
M10x135	3,570 N	9,520 N
M12x150	4,760 N	14,290 N



Floor-Fastening Set M8x95

Floor anchor M8x95
Nut, similar to DIN 934-M8, St, bright zinc-plated
Washer, similar to ISO 7089-M8, St, bright zinc-plated
 $M = 20 \text{ Nm}$ $m = 38.0 \text{ g}$
bright zinc-plated, 1 pce.

0.0.432.97

Floor-Fastening Set M10x135

Floor anchor M10x135
Nut, similar to DIN 934-M10, St, bright zinc-plated
Washer, similar to ISO 7089-M10, St, bright zinc-plated
 $M = 45 \text{ Nm}$ $m = 82.0 \text{ g}$
bright zinc-plated, 1 pce.

0.0.485.82

Floor-Fastening Set M12x150

Floor anchor M12x150
Nut, similar to DIN 934-M12, St, bright zinc-plated
Washer, similar to ISO 7089-M12, St, bright zinc-plated
 $M = 60 \text{ Nm}$ $m = 128.0 \text{ g}$
bright zinc-plated, 1 pce.

0.0.485.83



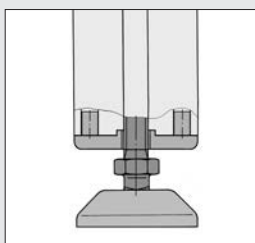
Foot Caps

- Profile covering above the Knuckle Foot
- Stops dirt getting into the profile and prevents injuries
- Products from Line X also available



A Foot Cap light is a plastic cap used to cover the end face of a Profile 8 40x40 light when a Knuckle Foot is screwed into the core bore of the profile.

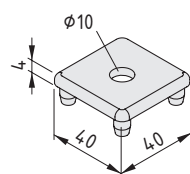
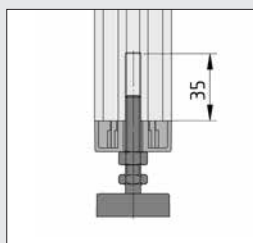
Note: To protect the Foot Cap, the counter nut of the Knuckle Foot can only be tightened with a reduced torque ($M = 10 \text{ Nm}$).



The Foot Cap is clamped in the outer profile cavities of the Profile 8 40x40 light.



Foot Cap X 8 40x40 light is used with Profiles X 8. Knuckle Foot X D40, M8x80 has an extended spindle which makes it ideal for combining with Foot Cap X 8 40x40 light.



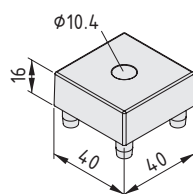
Foot Cap 8 40x40 light



PA-GF
m = 6.0 g

black, 1 pce.

0.0.473.03



Foot Cap X 8 40x40 light



PA-GF
m = 15.0 g

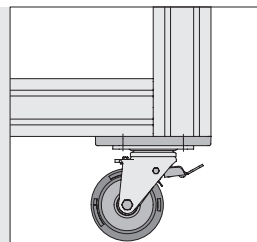
grey similar to RAL 7042, 1 pce.

0.0.601.21



Base Plates/Transport Plates

- Stable termination for the end faces of profiles
- For securely fastening castors and Knuckle Feet
- Products from Line X also available

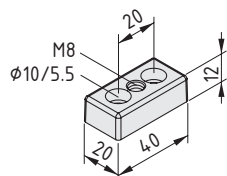


The Base Plates/Transport Plates, made from die-cast zinc, are powder-coated on all sides and can be screwed into the core bores of profile end faces or laterally into the grooves of the profiles. Threads of different diameters accommodate ring bolts, adjustable feet, castors and other elements.

Base Plate/Transport Plate 10 200x100 has 4 pre-drilled M10 threaded holes for fastening Swivel or Fixed Castor D125 heavy duty.

Materials used in all the following products:

Die-cast zinc



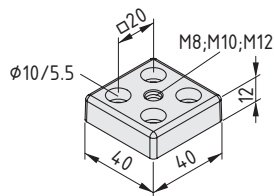
Base Plate/Transport Plate 5 40x20, M8



m = 56.0 g

black, 1 pce.

0.0.437.58



Base Plate/Transport Plate 5 40x40, M8



m = 112.0 g

black, 1 pce.

0.0.437.59

Base Plate/Transport Plate 5 40x40, M10



m = 109.0 g

black, 1 pce.

0.0.437.60

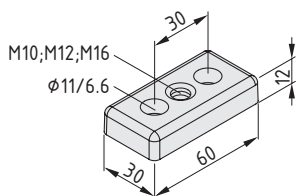
Base Plate/Transport Plate 5 40x40, M12



m = 107.0 g

black, 1 pce.

0.0.437.61



Base Plate/Transport Plate 6 60x30, M10



m = 102.0 g

black, 1 pce.

0.0.439.16

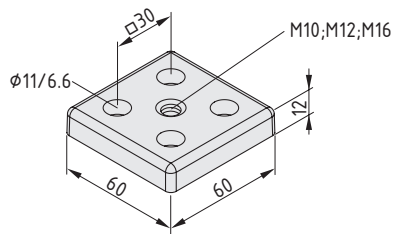
Base Plate/Transport Plate 6 60x30, M12



m = 101.0 g

black, 1 pce.

0.0.431.06

**Base Plate/Transport Plate 6 60x30, M16**

m = 95.0 g

black, 1 pce.

0.0.431.07

Base Plate/Transport Plate 6 60x60, M10

m = 193.0 g

black, 1 pce.

0.0.439.15

Base Plate/Transport Plate 6 60x60, M12

m = 192.0 g

black, 1 pce.

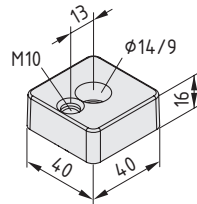
0.0.431.08

Base Plate/Transport Plate 6 60x60, M16

m = 186.0 g

black, 1 pce.

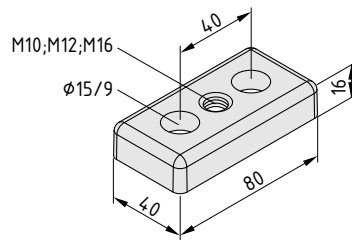
0.0.431.09

**Base Plate 8 40x40, M10**

m = 119.0 g

black, 1 pce.

0.0.608.85

**Base Plate/Transport Plate 8 80x40, M10**

m = 253.0 g

black, 1 pce.

0.0.440.71

Base Plate/Transport Plate 8 80x40, M12

m = 251.0 g

black, 1 pce.

0.0.406.32

Base Plate/Transport Plate 8 80x40, M16

m = 241.0 g

black, 1 pce.

0.0.406.33

Base Plate/Transport Plate 8 80x80, M10

m = 461.0 g

black, 1 pce.

0.0.440.72

Base Plate/Transport Plate 8 80x80, M12

m = 459.0 g

black, 1 pce.

0.0.406.22

Base Plate/Transport Plate 8 80x80, M16

m = 449.0 g

black, 1 pce.

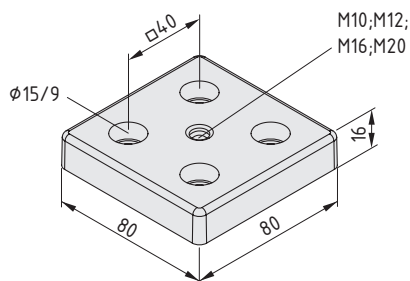
0.0.406.23

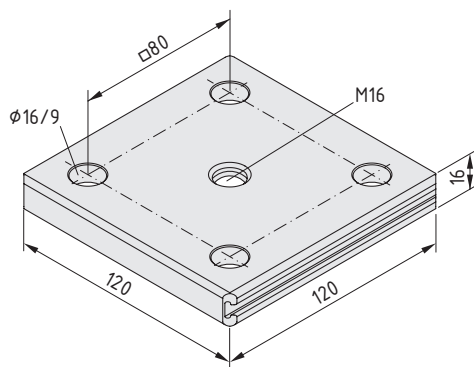
Base Plate/Transport Plate 8 80x80, M20

m = 440.0 g

black, 1 pce.

0.0.406.24



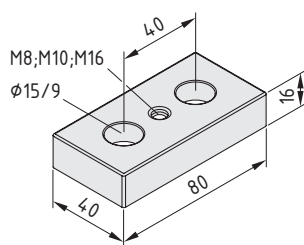


Base Plate/Transport Plate 8 120x120, M16



Al, anodized
m = 600.0 g
natural, 1 pce.

0.0.620.05



Base Plate/Transport Plate X 8 80x40, M8



m = 253.0 g
white aluminium, similar to RAL 9006, 1 pce.

0.0.600.55

Base Plate/Transport Plate X 8 80x40, M10



m = 256.0 g
white aluminium, similar to RAL 9006, 1 pce.

0.0.604.52

Base Plate/Transport Plate X 8 80x40, M16



m = 246.0 g
white aluminium, similar to RAL 9006, 1 pce.

0.0.607.03

Base Plate/Transport Plate X 8 80x80, M10



m = 463.0 g
white aluminium, similar to RAL 9006, 1 pce.

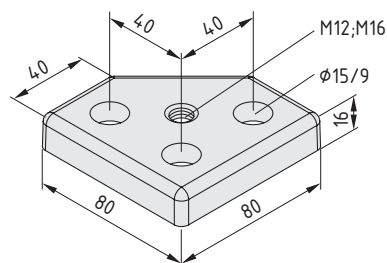
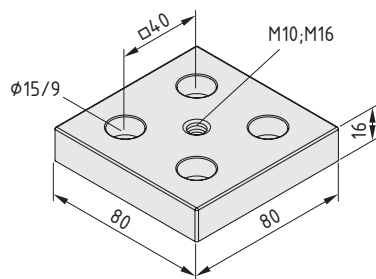
0.0.604.53

Base Plate/Transport Plate X 8 80x80, M16



m = 453.0 g
white aluminium, similar to RAL 9006, 1 pce.

0.0.600.56



Base Plate/Transport Plate 8 80x80-45°, M12



m = 427.0 g
black, 1 pce.

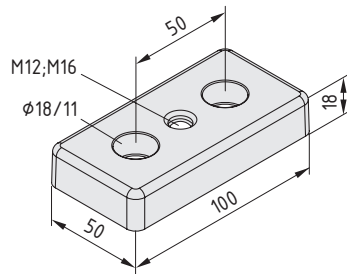
0.0.409.50

Base Plate/Transport Plate 8 80x80-45°, M16



m = 412.0 g
black, 1 pce.

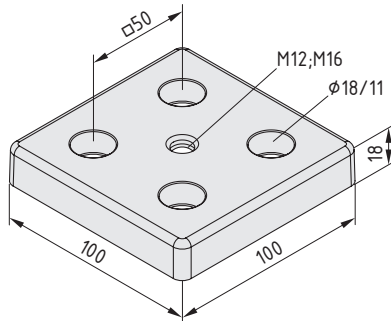
0.0.409.51

**Base Plate/Transport Plate 10 100x50, M12**

m = 425.0 g

white aluminium, similar to RAL 9006, 1 pce.

0.0.625.15

**Base Plate/Transport Plate 10 100x100, M12**

m = 886.0 g

white aluminium, similar to RAL 9006, 1 pce.

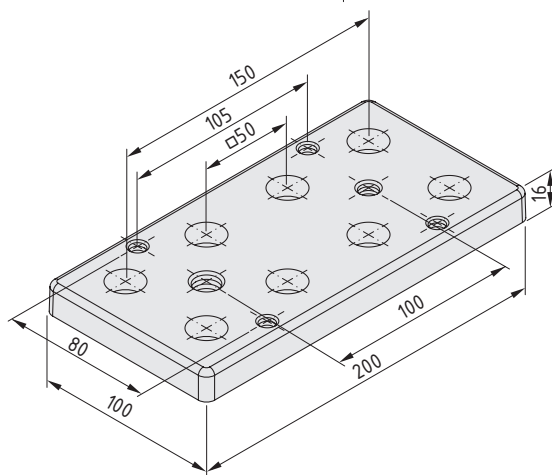
0.0.625.19

Base Plate/Transport Plate 10 100x100, M16

m = 877.0 g

white aluminium, similar to RAL 9006, 1 pce.

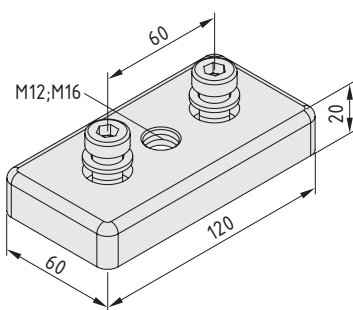
0.0.625.20

**Base Plate/Transport Plate 10 200x100**

m = 1272.0 g

white aluminium, similar to RAL 9006, 1 pce.

0.0.625.27

**Base Plate/Transport Plate 12 120x60, M12**

2 Cap Screws DIN 7984-M12x30, St, bright zinc-plated

2 washers DIN 433-13, St, bright zinc-plated

m = 800.0 g

black, 1 set

0.0.007.34

Base Plate/Transport Plate 12 120x60, M16

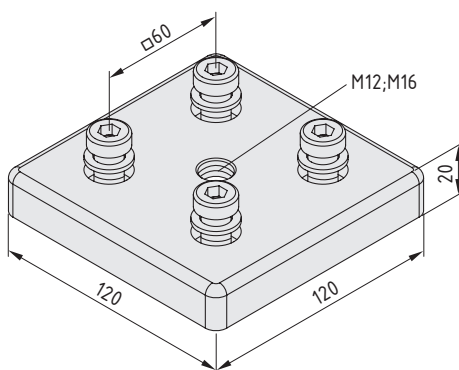
2 Cap Screws DIN 7984-M12x30, St, bright zinc-plated

2 washers DIN 433-13, St, bright zinc-plated

m = 800.0 g

black, 1 set

0.0.007.37

**Base Plate/Transport Plate 12 120x120, M12**

4 Cap Screws DIN 7984-M12x30, St, bright zinc-plated

4 washers DIN 433-13, St, bright zinc-plated

m = 1.5 kg

black, 1 set

0.0.007.40

Base Plate/Transport Plate 12 120x120, M16

4 Cap Screws DIN 7984-M12x30, St, bright zinc-plated

4 washers DIN 433-13, St, bright zinc-plated

m = 1.5 kg

black, 1 set

0.0.007.43



Collision Guard L

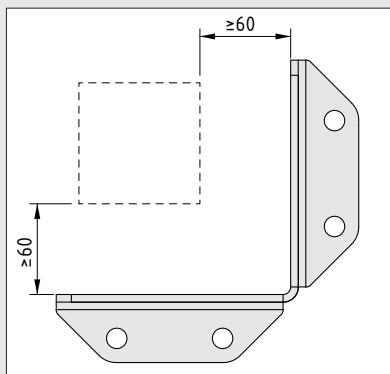
- Protects freestanding objects
- Complies with DGUV Regulation 108-007

According to DGUV Regulation 108-007 (previously BGR 234), when a rack is loaded from a forklift or other freely steerable machinery and/or is located on a route used by such machinery, its corner areas must be protected by a mechanical cover. The robust item Collision Guard L is anchored to the ground and acts as a fixed guard to stop vehicles colliding with the rack. The L-shaped Collision Guard is 405 mm high.

Collision Guard L is not joined to the rack. It provides added safety in areas where there is a high risk of collisions due to turning vehicles and trolleys. The black & yellow hazard markings draw attention to the guard unit in line with ASR A 1.3.

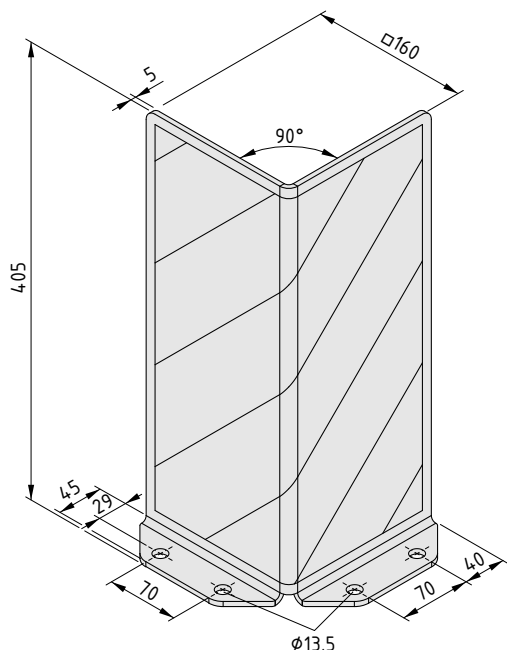
item supplies floor anchors for various surface qualities, such as Floor-Fastening Set M10x135 (0.0.485.82).

Floor-Fastening Sets 386



A clearance of at least 60 mm must be maintained to ensure compliance with the DGUV regulations.

11



Collision Guard L With Hazard Markings

Collision Guard L, St, signal yellow similar to RAL 1003
Hazard Markings 375x295 SA
m = 5.5 kg

1 pce.

0.0.665.48