

## C4

Battery Based Actuator  
Control System
**concens**   
 - excellent electric actuators


The Concens C4 system is a versatile solution for control of electric actuators. The unique design, strong power supply system and the option of controlling multiple actuators makes the C4 system attractive for use in various applications.

The C4 system consists of:

- Control Box
- Handset
- Battery
- Battery charger

The C4 concept is designed for optimal flexibility making configuration, programming and installation very easy. Additionally, service and replacement of e.g. batteries are extremely easy with the patented magnetic principle. No tools are required.

The C4 Control Box is designed to handle up to four actuators in groups, synchronous or individually. It is controlled with a wired handset, which can be delivered in five different button layouts depending on customer needs. Furthermore, the C4 can be equipped with emergency stop.

The C4 system contains a rechargeable 24VDC NiMH or Li-Ion battery, enabling the actuator solution to be fully mobile.

Standard C4 solution includes IP50 protection with IP65 protection available.

### Features

- 4-channel fully programmable controller
- Battery powered for mobile use
- 24VDC NiMH or Li-Ion replaceable battery
- Patented battery system
- Customized colors and foil design
- Wired handset
- Adjustable soft- start and stop
- Adjustable current limit in and out
- Adjustable calibration speed and current
- Adjustable virtual min/max-position
- Individual or synchronous operation for drive 2-3-4 or 2+2 actuator
- Audible and visual status signal

### Technical Data

Supply	24VDC NiMH or Li-Ion battery
Idle current	< 5mA
Current limit	8A/ch max. total 12A
Current trip delay	30ms
Ramps	0-3 sec
Operating temp.	-20..70°C
Connector type	Molex Mini-Fit 6 pin
Weight	Control Box 430g NiMH Battery Charger: 430g Li-Ion Battery Charger: 410g Battery: 530g (Li-Ion: 400g)
Battery Capacity	NiMH: 1400m Ah Li-Ion: 2100m Ah

## System Components



**C4 Control Box**



**C4 Brackets**



**Handsets**



**Customizable Foils**



**Battery Charger**



**Battery**

## Electrical Connections



- ① Actuator 1
- ② Actuator 2
- ③ Actuator 3
- ④ Actuator 4
- ⑤ Handset,  
External Power  
Emergency Stop

## System Parameters

Concens C4 configuration tool V2.02

File Special functions

☒ Update Parameter: ComPort Project file: -

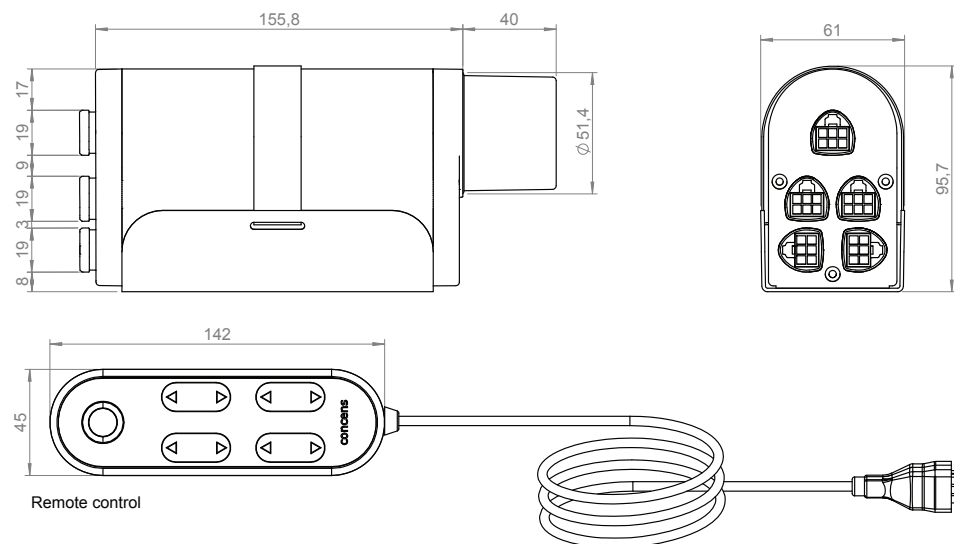
Connect

Device Settings		Actuator 1		Actuator 2		Actuator 3		Actuator 4	
Software rev:	00	Button Out	24 00	Button Out	24 00	Button Out	24 00	Button Out	24 00
Error code	00	Button In	21 00	Button In	21 00	Button In	21 00	Button In	21 00
Battery Voltage	00	Start Ramp (Acc.)	0	Start Ramp (Acc.)	0	Start Ramp (Acc.)	0	Start Ramp (Acc.)	0
PwrCycles	00	Stop Ramp (Dec.)	0	Stop Ramp (Dec.)	0	Stop Ramp (Dec.)	0	Stop Ramp (Dec.)	0
Max Total current	10	Speed In	100	Speed In	100	Speed In	100	Speed In	100
Opr.Delay 0-10	0	Speed Out	100	Speed Out	100	Speed Out	100	Speed Out	100
Group 1 max dev.	200	Max Current In	180	Max Current In	180	Max Current In	180	Max Current In	180
Group 2 max dev.	200	Max Current Out	180	Max Current Out	180	Max Current Out	180	Max Current Out	180
		Virtual max	99999	Virtual max	99999	Virtual max	99999	Virtual max	99999
		Virtual min	0	Virtual min	0	Virtual min	0	Virtual min	0
		Calib. Speed %	80	Calib. Speed %	80	Calib. Speed %	80	Calib. Speed %	80
		Calib. Current	200	Calib. Current	200	Calib. Current	200	Calib. Current	200
		Sync Group	0	Sync Group	0	Sync Group	0	Sync Group	0
		Hall Sensors	<input type="checkbox"/>	Hall Sensors	<input type="checkbox"/>	Hall Sensors	<input type="checkbox"/>	Hall Sensors	<input type="checkbox"/>
		Current load	00	Current load	00	Current load	00	Current load	00
		Peak load	00	Peak load	00	Peak load	00	Peak load	00
		Current Spd	00	Current Spd	00	Current Spd	00	Current Spd	00
		Current Pos.	00	Current Pos.	00	Current Pos.	00	Current Pos.	00
		Current Pwr%	00	Current Pwr%	00	Current Pwr%	00	Current Pwr%	00
		Movements	00	Movements	00	Movements	00	Movements	00

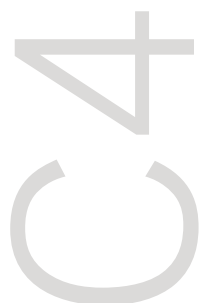
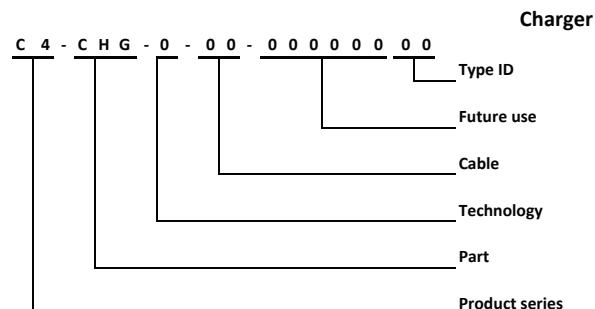
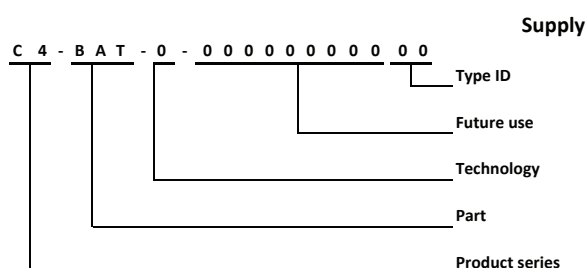
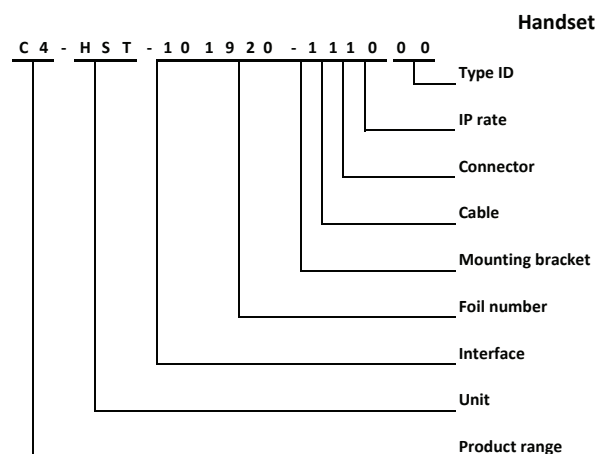
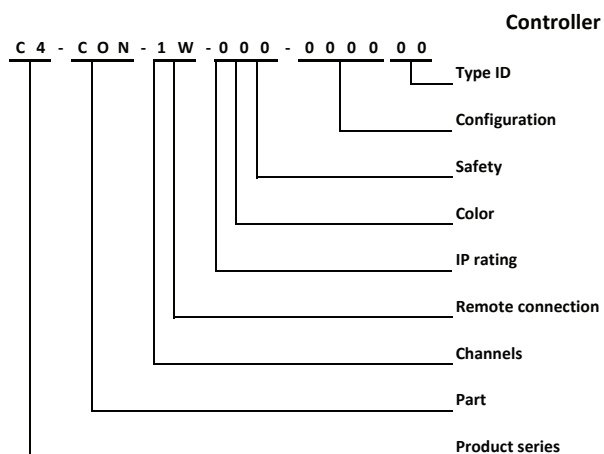
RESET C4 Default Program

17-09-2016 14:38:11

## Mechanical Dimensions



## C4 Item Number Combination



### Please Note

- Concens does not have any responsibility over the possible errors in this data sheet
- Specifications subject to change without notice

[www.concens.com](http://www.concens.com)

**Concens A/S**  
 Øresundsvej 7  
 DK-6715 Esbjerg N  
 Denmark

**T** +45 70 11 11 31  
**F** +45 76 10 50 10  
**E** [info@concens.com](mailto:info@concens.com)  
**VAT** DK10132266