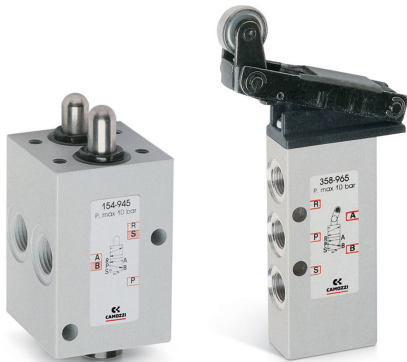


MECHANICALLY OPERATED VALVES

SERIES 1 AND 3

Series 1: 3/2-way and 5/2-way, ports G1/8 and G1/4
Series 3: 3/2-way and 5/2-way, ports G1/8



These mechanically operated valves have been designed with three different types of actuation:

- plunger
- lever/roller
- unidirectional lever/roller

In each case, return is triggered by a mechanical spring.

3/2-way monostable valves Series 3 are normally closed in the rest position when pressure is supplied in 1 and are normally open when pressure is supplied on connection 3, the user port 2 remaining unchanged.

5/2-way valves Series 3 can be supplied via the ports 3 and 5 with two different pressures if a cylinder has to be operated using a delivery pressure which is different from the return pressure.

General Data

Construction	Spool-type (Series 3), poppet-type (Series 1)
Valve group	3/2, 5/2 way/pos.
Materials	Aluminium body, brass poppet, stainless steel spool, NBR seals
Ports	G1/8, G1/4
Environmental temperature	0°C ÷ 60°C
Medium temperature	0°C ÷ 50°C
Operating pressure	See models
Fluid	Filtered air, without lubrication. If lubricated air is used, it is recommended to use ISO VG32 oil. Once applied the lubrication should never be interrupted.

MECHANICALLY OPERATED VALVES
SERIES 1 AND 3 - CODING EXAMPLES

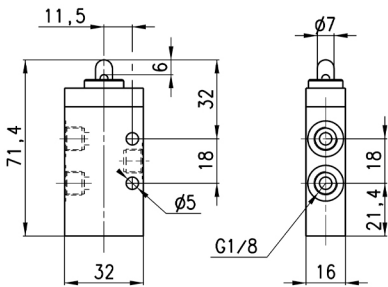
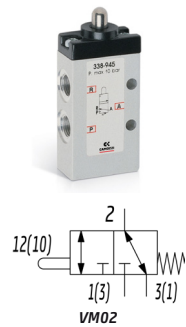
Coding Example

3	3	8	-	94	5
3	SERIES 1 3				
3	FUNCTION 3 = 3/2 ways NC 4 = 3/2 ways NO (only Series 1) 5 = 5/2 ways				
8	PORTS 8 = G1/8 4 = G1/4 (only Series 1)				
94	ACTUATION 94 = Plunger 95 = Lever/roller 96 = Unidirectional roller				
5	RESETTING 5 = Spring return				

VALVES AND SOLENOID VALVES

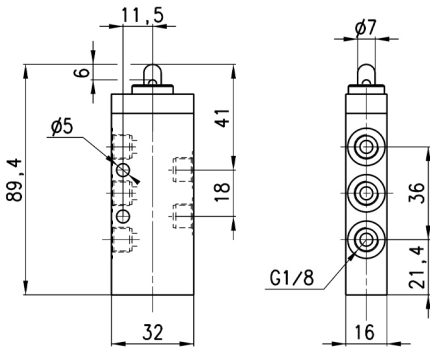
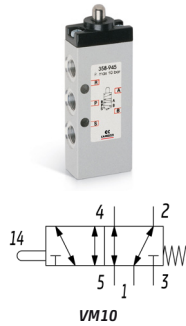
6

Valve Mod. 338-945



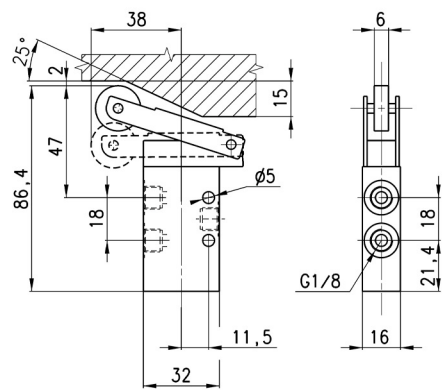
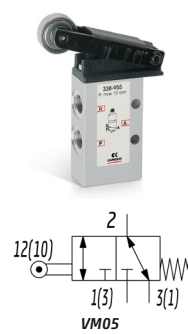
Mod.	Operating pressure [bar]	Flow [NL/min]	Actuating force [N]
338-945	-0.9 ÷ 10	700	32

Valve Mod. 358-945



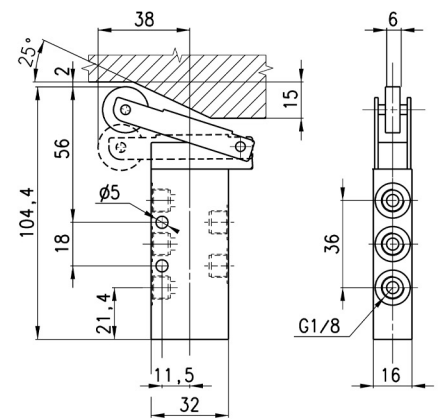
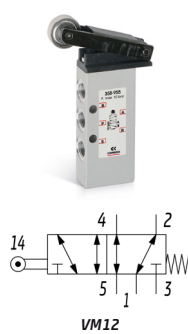
Mod.	Operating pressure [bar]	Flow [NL/min]	Actuating force [N]
358-945	-0.9 ÷ 10	700	35

Valve Mod. 338-955



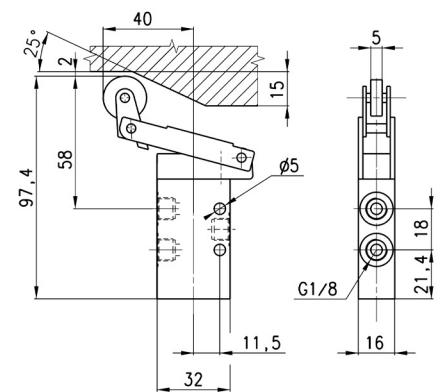
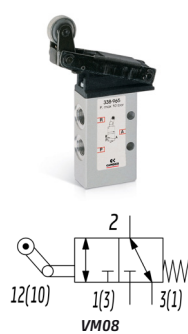
Mod.	Operating pressure [bar]	Flow [NL/min]	Actuating force [N]
338-955	-0.9 ÷ 10	700	15

Valve Mod. 358-955



Mod.	Operating pressure [bar]	Flow [NL/min]	Actuating force [N]
358-955	-0.9 ÷ 10	700	17

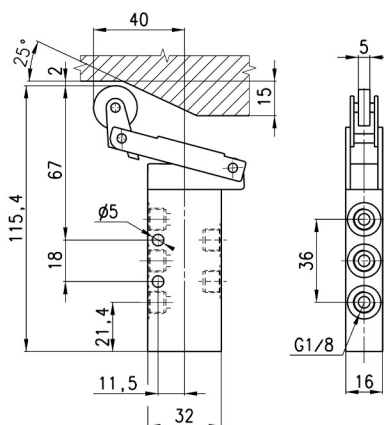
Valve Mod. 338-965



Mod.	Operating pressure [bar]	Flow [NL/min]	Actuating force [N]
338-965	-0.9 ÷ 10	700	15

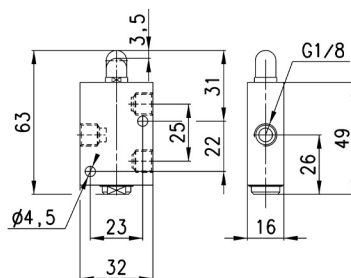
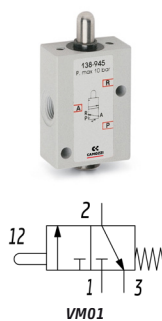
MECHANICALLY OPERATED VALVES
SERIES 1 AND 3 - DIMENSIONS

Valve Mod. 358-965



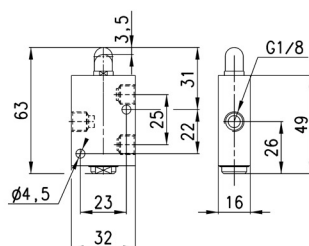
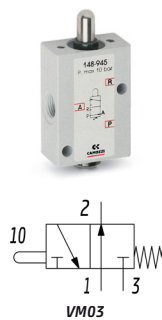
Mod.	Operating pressure [bar]	Flow [NL/min]	Actuating force [N]
358-965	-0,9 ÷ 10	700	16

Valve Mod. 138-945

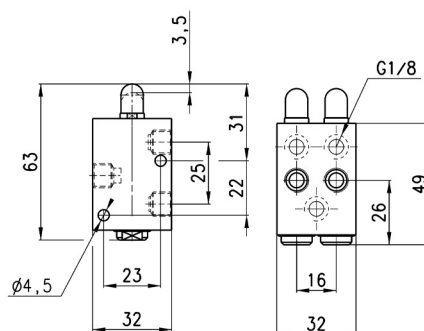


Mod.	Operating pressure [bar]	Flow rate [NL/min]	Actuating force at 6 bar [N]
138-945	0 ÷ 10	500	70

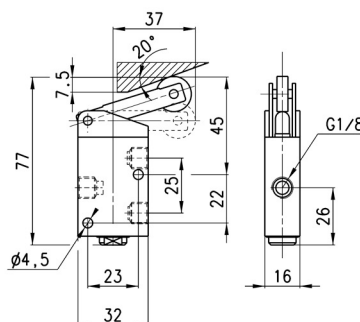
Valve Mod. 148-945



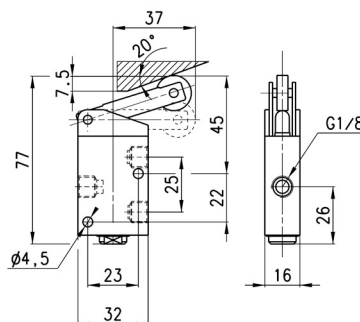
Mod.	Operating pressure [bar]	Flow rate [NL/min]	Actuating force at 6 bar [N]
148-945	0 ÷ 10	500	70



Mod.	Operating pressure [bar]	Flow rate [NL/min]	Actuating force at 6 bar [N]
158-945	0 ÷ 10	500	120



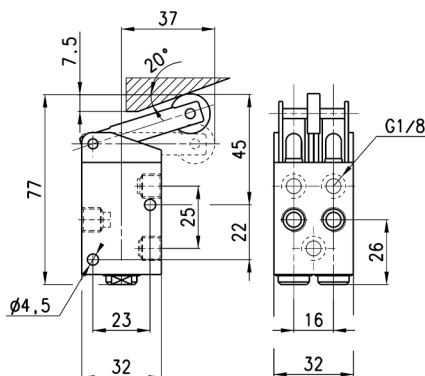
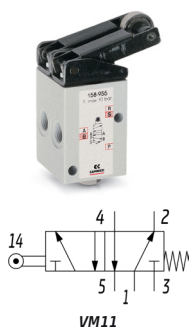
Mod.	Operating pressure [bar]	Flow rate [l/min]	Actuating force at 6 bar [N]
138-955	0 ÷ 10	500	36



Mod.	Operating pressure [bar]	Flow rate [l/min]	Actuating force at 6 bar [N]
138-955	0 + 10	500	36

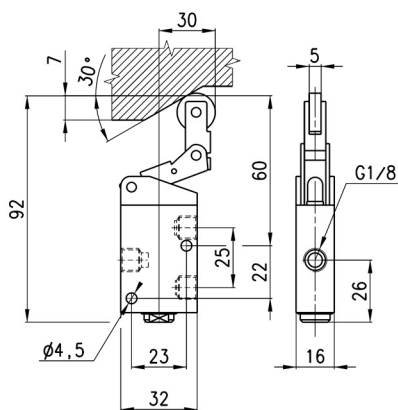
MECHANICALLY OPERATED VALVES
SERIES 1 AND 3 - DIMENSIONS

Valve Mod. 158-955



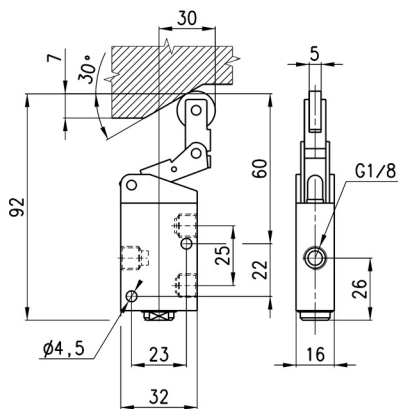
Mod.	Operating pressure [bar]	Flow rate [NL/min]	Actuating force at 6 bar [N]
158-955	0 ÷ 10	500	92

Valve Mod. 138-965



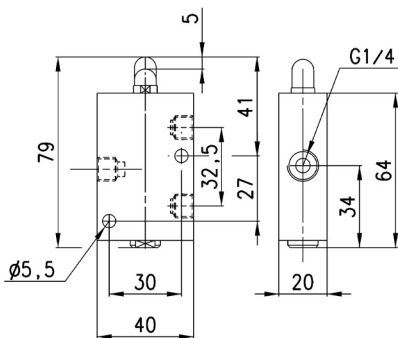
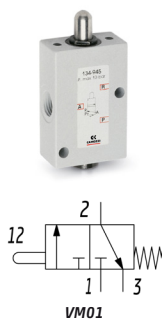
Mod.	Operating pressure [bar]	Flow rate [NL/min]	Actuating force at 6 bar [N]
138-965	0 ÷ 10	500	41

Valve Mod. 148-965



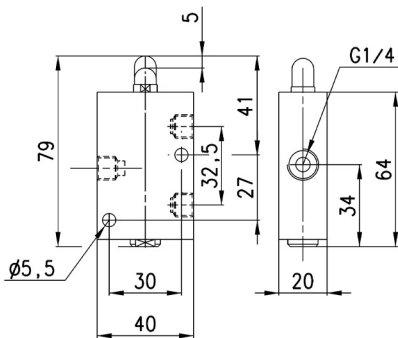
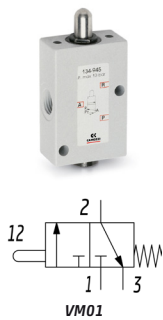
Mod.	Operating pressure [bar]	Flow rate [NL/min]	Actuating force at 6 bar [N]
138-965	0 ÷ 10	500	41

Valve Mod. 134-945



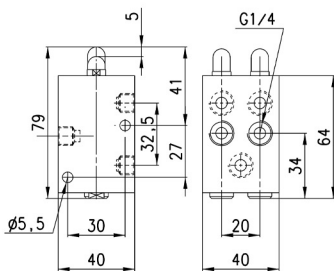
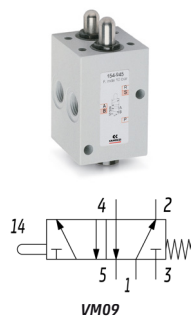
Mod.	Operating pressure [bar]	Flow rate [NL/min]	Actuating force at 6 bar [N]
134-945	0 ÷ 10	1250	64

Valve Mod. 144-945



Mod.	Operating pressure [bar]	Flow rate [NL/min]	Actuating force at 6 bar [N]
134-945	0 ÷ 10	1250	64

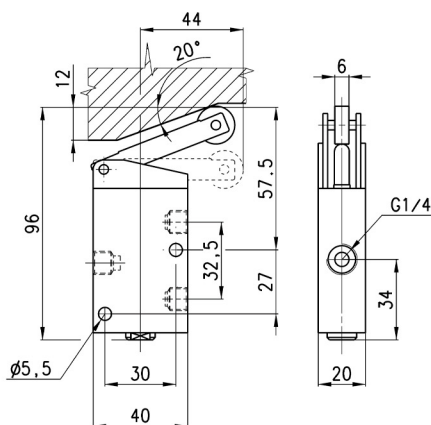
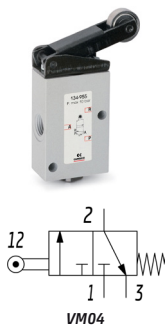
Valve Mod. 154-945



Mod.	Operating pressure [bar]	Flow rate [NL/min]	Actuating force at 6 bar [N]
154-945	0 ÷ 10	1250	147

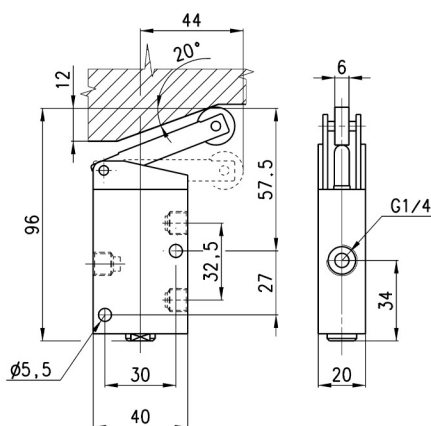
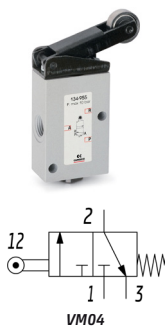
MECHANICALLY OPERATED VALVES
SERIES 1 AND 3 - DIMENSIONS

Valve Mod. 134-955



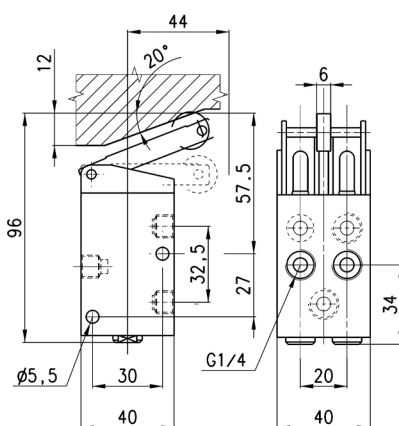
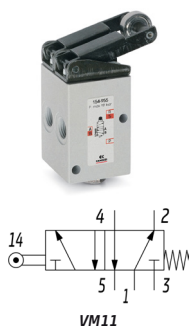
Mod.	Operating pressure [bar]	Flow rate [NL/min]	Actuating force at 6 bar [N]
134-955	0 ÷ 10	1250	41

Valve Mod. 144-955



Mod.	Operating pressure [bar]	Flow rate [NL/min]	Actuating force at 6 bar [N]
134-955	0 ÷ 10	1250	41

Valve Mod. 154-955



Mod.	Operating pressure [bar]	Flow rate [NL/min]	Actuating force at 6 bar [N]
154-955	0 ÷ 10	1250	110