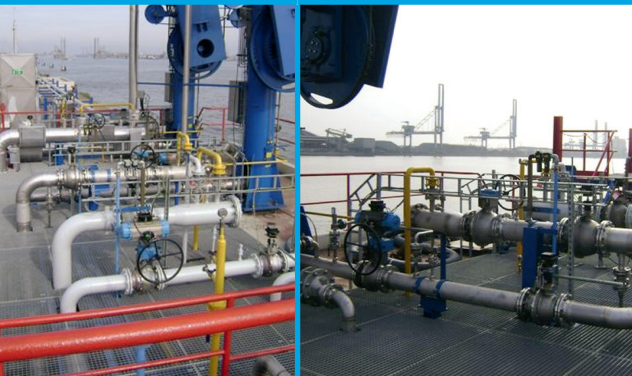
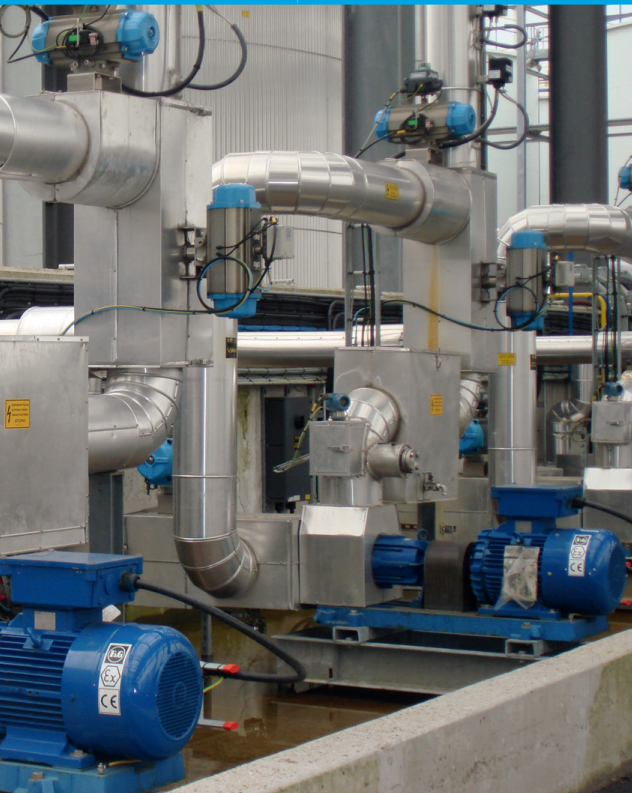


PRODUCT RANGE MARKETS

industrial valves

WATER TREATMENT
ENERGY NETWORKS
TANK STORAGE
CONSTRUCTION & BUILDINGS
PROCESS INDUSTRY

TANK STORAGE



REFERENCES

SEATANK ANTWERP / GHENT
 VOPAK ADPO
 LBC CEP SA
 LBC ANTWERP
 LBC ROTTERDAM
 MONUMENT CHEMICALS
 GADOT
 LIEFKENSHOEK LOGISTIC HUB
 STOLT MOERDIJK
 HAMER
 TOTAL
 BASF
 LANXESS
 AQ-SERVICES
 ARCELOR-MITTAL
 DUFFEL ALUMINIUM
 UMICORE
 APERAM
 AKZO NOBEL
 ATLAS COPCO
 GSK
 PFIZER
 PARDUYNS
 AQUALIBI

other markets

TANK TRAILERS / MOBILE SKIDS



(PETRO)CHEMICAL INDUSTRY



METALLURGY INDUSTRY



BV1



- one piece ball valve
- reduced bore
- BSP or NPT threaded connections
- dimensions according to factory standard
- body and seats available in various materials

DIMENSIONS: DN8 - DN50 / 1/4" - 2"

BV4-S



- two-piece ball valve, split body
- full bore
- flange connection according to EN 1092-1 / DIN 2501, B 16.5
- F/F according to EN 558-1- series 14, B16.10
- body and stem available in various materials
- direct mounting through ISO-5211 pad

DIMENSIONS: DN25 - DN100 / 1" - 4"

BV2



- two-piece compact ball valve
- full bore
- BSP or NPT threaded connections
- dimensions according to factory standard
- body and seats available in various materials

DIMENSIONS: DN8 - DN100 / 1/4" - 4"

BV6



- three-way ball valve, L or T bore
- reduced bore
- BSP or NPT threaded connections
- dimensions according to factory standard
- body and seats available in various materials

DIMENSIONS: DN8 - DN50 / 1/4" - 2"

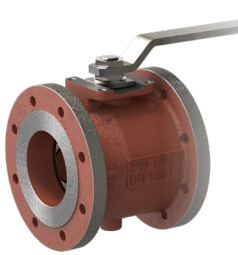
BV3 / BV3M3



- three-piece ball valve
- full bore
- BSP, NPT and BW or SW welding connections
- dimensions according to BV3 factory standard or DIN3202-4 M3 (BV3M3) spacing standard
- body and seats available in various materials

DIMENSIONS: DN8 - DN150 / 1/4" - 6"

BV7



- one piece ball valve
- full bore
- flange connection to DIN 2526 - PN16
- F/F according to EN 558-1 - series 27

DIMENSIONS: DN25 - DN200 / 1" - 8"

BV4



- two-piece ball valve, split body
- full bore
- flange connection according to DIN 2501 / DIN 2526 - PN 10/16/40 / ANSI B16.5
- dimensions according to DIN 3202-F18 (F4/F5) & F1, EN 558-1-14/15 & 1 / ANSI B16.10 - A-150 / A-300
- body and stem available in various materials
- seats available in various materials PTFE, RTFE, CTFE, MPTFE, PEEK, ...
- trunnion design available on request

DIMENSIONS: DN15 - DN300 / 1/2" - 12"

BV8



- one-piece ball valve, wafer design
- reduced or full bore
- flange connection to DIN 2501 / DIN 2526 - PN 10/16/40, ANSI B 16.5
- dimensions according to factory standard
- bodies and seats available in various materials

DIMENSIONS: DN15 - DN200 / 1/2" - 8"

DISTRICT ENERGY NETWORKS



REFERENCES

ARAMCO- KINGDOM OF SAUDI ARABIA
 JEDDAH AIRPORT- KINGDOM OF SAUDI ARABIA
 SUEZ STEEL COMPANY- CAIRO- EGYPT
 YAS-ISLAND- YI-01 / YI-02- UNITED ARAB EMIRATES
 DUBAI METRO- UNITED ARAB EMIRATES
 JEBEL ALI JUMEIRA- DM-06- UNITED ARAB EMIRATES
 JEBEL ALI INDUSTRIAL ZONE- DM-01- UNITED ARAB EMIRATES
 AIRPORT ROAD- UNITED ARAB EMIRATES
 CENTRAL MARKET- AD-08- ABU-DHABI- UNITED ARAB EMIRATES
 DIP 3 & DIP 6- ABU-DHABI- UNITED ARAB EMIRATES
 SHEIK ZAYED ROAD- UNITED ARAB EMIRATES
 RAS AL KHAIMIH EXP.- RK-01- UNITED ARAB EMIRATES
 EMIRATES UNIVERSITY- UNITED ARAB EMIRATES
 MINISTRY OF FINANCE- KINGDOM OF SAUDI ARABIA
 KHALIFA 2- ALDAR 10- ABU-DHABI- UNITED ARAB EMIRATES
 SABIC- RIYADH- KINGDOM OF SAUDI ARABIA
 SÜDZUCKER- TIRLEMONT
 COSUCRA
 CITRIQUE BELGE
 AGRISTO
 LUTOSA
 LOTUS BAKERIES
 GREENYARD
 COLRUYT
 BARRY CALLEBAUT
 VANHEEDE BIOMASS
 BIO BLUE IEPEP
 BOORTMALT

other markets

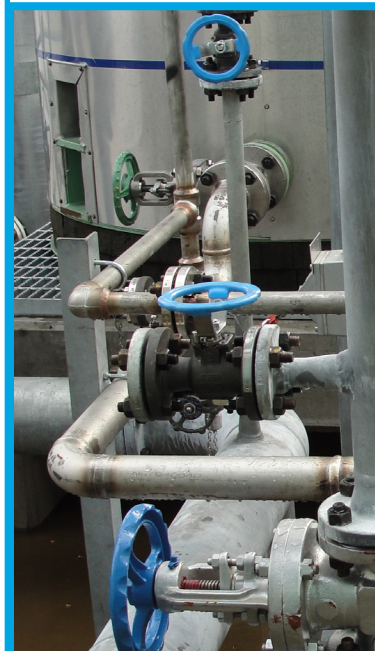
FOOD INDUSTRY



SHIPBUILDING



FIRE PROTECTION SYSTEMS



BIOGAS INSTALLATIONS

BV10



- wafer butterfly valve with centering eyes to EN 593
- flange connection according to EN 1092-2 - PN 6/10/16, ASME/ANSI B16.5 class 150, ASME / ANSI B16.47 class 150 series A
- dimensions according to EN 558-1 series 20, ISO 5752 series 20, DIN 3202 K1, API 609 cat. A, BS 5155 table 6, MSS SP-67 table 3
- interchangeable seat, back-up type
- different materials available for the body, on request
- disk and seat available in different materials

DIMENSIONS: DN32 - DN1200 / 5/4" - 48"

BV10-S



- wafer butterfly valve with centering eyes to EN 593
- flange connection according to EN 1092-2 - PN 6/10/16, ASME/ANSI B16.5 class 150, ASME / ANSI B16.47 class 150 series A
- dimensions according to EN 558-1 series 20, ISO 5752 series 20, DIN 3202 K1, API 609 cat. A, BS 5155 table 6, MSS SP-67 table 3
- interchangeable seat, soft type
- different materials available for the body, on request
- disk and seat available in different materials
- customised and fast production

DIMENSIONS: DN50 - DN300 / 2" - 12"

BV12



- lug butterfly valve with threaded lugs to EN 593
- flange connection according to EN 1092-2 - PN 6/10/16, ASME/ANSI B16.5 class 150, ASME / ANSI B16.47 class 150 series A
- dimensions according to EN 558-1 series 20, ISO 5752 series 20, DIN 3202 K1, API 609 cat. A, BS 5155 table 6, MSS SP-67 table 3
- interchangeable seat, back-up type
- different materials available for the body, on request
- disk and seat available in different materials

DIMENSIONS: DN40 - DN1200 / 1 1/2" - 48"

BV12-S



- lug butterfly valve with threaded lugs to EN 593
- flange connection according to EN 1092-2 - PN 6/10/16, ASME/ANSI B16.5 class 150, ASME / ANSI B16.47 class 150 series A
- dimensions according to EN 558-1 series 20, ISO 5752 series 20, DIN 3202 K1, API 609 cat. A, BS 5155 table 6, MSS SP-67 table 3
- interchangeable seat, soft type
- different materials available for the body, on request
- disk and seat available in different materials
- customised and fast production

DIMENSIONS: DN50 - DN300 / 2" - 12"

BV11



- butterfly valve type "U"-type according to EN 593
- flange connection according to EN 1092-2 - PN 10/16, ASME/ANSI B16.5 class 150, ASME/ANSI B16.47 class 150 series A
- dimensions according to EN 558-1 series 20, ISO 5752 series 20, DIN 3202 K1, API 609 cat. A, BS 5155 table 6, MSS SP-67 table 3
- interchangeable seat, back-up type
- different materials available for the body, on request
- butterfly and seat available in different materials

DIMENSIONS: DN50 - DN1200 / 2" - 48"

BV13



- double flange butterfly valve, eccentric according to EN 593
- flange connection according to EN 1092-2 - PN 10/16
- dimensions according to EN 558-1 series 13 and 14, ISO 5752 series 13 and 14, DIN 3202 F4 and F16, BS 5155 table 6
- vulcanized seat on the butterfly
- body, butterfly and seat available in different materials

DIMENSIONS: DN200 - DN2800 / 8" - 112"

BV14



- double flange butterfly valve, concentric according to EN 593
- flange connection according to EN 1092-2 - PN 10/16, ASME/ANSI B16.5 class 150, ASME/ANSI B16.47 class 150 series A
- dimensions according to EN 558-1 series 13, ISO 5752 series 13, DIN 3202 F16, API 609 cat. B, BS 5155 table 6
- vulcanized seat on the body
- body, butterfly and seat available in different materials

DIMENSIONS: DN50 - DN2000 / 2" - 80"

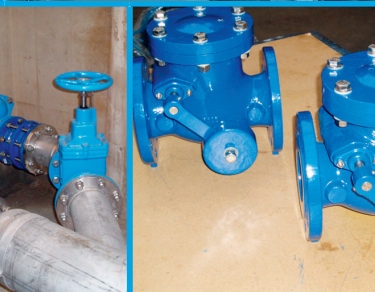
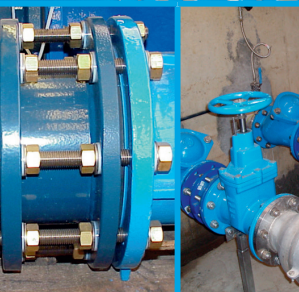
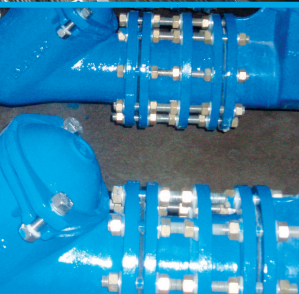
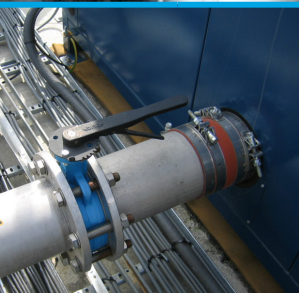
BV10-HP/TRI BV12-HP/TRI



- double or triple offset, design and execution according to EN 593-ASME B16.34-API 609
- flange connection according to EN 1092-1 PN10 - EN 1092-1 PN16 - EN 1092-1 PN25 - ASME B16.5 150lbs
- dimensions according to EN 558-1 series 20/API 609 cat. A/B ISO 5752 S20
- tested to ISO 5208 - API 598
- body, butterfly and seat available in different materials

DIMENSIONS: DN50 - DN600 / 2" - 24"

WATER TREATMENT



REFERENCES

NESTOIL PROJECT - ST. PETERSBURG, RUSSIA
 STABILISATION WATER PIPES FOR SOFIA WATER - SOFIA, BULGARIA
 WATER TREATMENT PLANT OF FES-MAROC-FES
 PUMPING STATIONS ANTWERP, GHENT, HASSELT, MECHELEN
 HELSINKI WATER, FINLAND
 IDEA
 SDWE
 AIDE LIEGE
 AQUAFIN
 DECKX
 DESOTEC
 SMET
 GWT EUROPE
 DENYS
 EKOPAK
 PASFROST
 INOPSYS
 AAQUA
 PANTAREIN
 BOUYGUES
 EQUANS
 VINCI ENERGIES
 CEGELEC
 CORDEEL GROUP

other markets

HEATING & VENTILATION



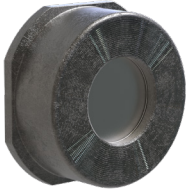
CONSTRUCTION / MACHINERY



AUTOMOTIVE SECTOR



BV36



- check valve - disco check wafer type
- with return spring
- flange connection to DIN PN10/16/40 and A150 / A-300
- F/F according to DIN EN 558-1
- easy and maintenance-free installation
- low opening resistance and low pressure drop
- automatically held in a centered position by the flange screws
- body and seats available in various materials

DIMENSIONS: DN15 - DN300 / 1/2" - 12"

BV38



- wafer type check valve
- flange connection according to PN10/16/40 and A-150/A-300
- short execution according to factory standard
- easy and maintenance-free installation
- low opening resistance and low pressure drop
- automatically held in a centered position by the flange screws
- bodies and seats available in various materials

DIMENSIONS: DN32 - DN600 / 1 1/2" - 24"

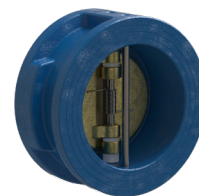
BV39



- wafer type check valve
- with return spring
- flange connection according to PN10/16/40 and A-150/A-300
- short execution according to factory standard
- easy and maintenance-free installation
- low opening resistance and low pressure drop
- automatically held in a centered position by the flange screws
- body and seats available in various materials

DIMENSIONS: DN32 - DN600 / 1 1/2" - 24"

BV40



- dual plate check valve
- with return spring
- flange connection according to PN10/16/40 and A-150/A-300
- dimensions according to factory standard
- easy and maintenance-free installation
- low opening resistance and low pressure drop
- automatically held in a centered position by the flange screws
- body and seats available in various materials

DIMENSIONS: DN50 - DN600 / 2" - 24"

BV41



- ball check valve
- flange connection according to PN10/16 and A-150
- Dimensions according to DIN EN 558-1 Series 48, ANSI B16.10
- easy and maintenance-free installation
- horizontal and vertical mounting
- bodies and seats available in various materials

DIMENSIONS: DN50 - DN600 / 2" - 24"

gate valves

BV49



- gate valve
- flange connection according to PN10/16 and A-150
- dimensions according to DIN 3202-F4/F5, ANSI B16.10
- easy flow control
- body and seats available in various materials
- non-rising handwheel

DIMENSIONS: **DN40 - DN600 / 1 1/2" - 24"**

knife gate valves

BV50

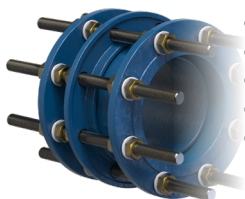


- wafer knife gate valve
- flange connection according to EN 1092-2 PN10
- unidirectional with one-piece body
- rising stem with non-rising handwheel
- design and testing according to MSS SP-81
- body and seats available in various materials

DIMENSIONS: **DN50 - DN1200 / 2" - 48"**

dismantling joints

BV51



- dismantling joint
- flange connection according to PN10/16
- horizontal and vertical mounting
- easy and maintenance-free installation
- bodies and flanges available in A216 WCB steel

DIMENSIONS: **DN50 - DN1600 / 2" - 64"**

filters

BV56



- « Y » filter
- flange connection according to EN 1092-2 PN16 (ISO 7005-2)
- dimensions according to EN 5581- series 1 (DIN 3202 -F1)
- easy and maintenance-free installation
- pressure loss control by integrated pressure gauge connections
- body and seats available in various materials
- stainless steel sieve with custom mesh

DIMENSIONS: **DN15 - DN600 / 1/2" - 24"**

specific executions



Atex design

Belven has developed a designated range of valves with ATEX certification for areas with a specific risk of explosion



Design for abrasive media

Specific seats have been developed to obtain a better resistance for mining activities or for example the transport of solid elements (cement, sand, mud, ...)

Underground or underwater execution



Do not hesitate to contact your Belven technical advisor to discuss the appropriate valve solutions for your specific applications.

operating options

MANUAL

- LEVER in different materials (short or long model) and adjustable, spring or oval lever for small diameters, T-lever (standard for large diameters), lever with spring return ...
- GEAR BOXES in different materials such as cast iron or aluminum, standard/lockable/chain wheel models, with visual indication open/closed

PNEUMATIC

- Double acting pneumatic actuator - DA
- Single acting pneumatic actuator - SA
- Suitable for high duty cycles
- Reduced maneuvering time
- Few moving parts: increased operational safety
- Namur design for easy mounting of accessories, such as limit switches, solenoid valves and communication bus systems
- Can be combined with manual override (MOD)
- The safety function can be implemented in NC (normally closed) or NO (normally open) configuration. Belven applies the NC safety operation as standard

ELECTRICAL

Belven strives to find appropriate solutions for the automation of valves for industry and the construction sector. The use of state-of-the-art electronic components in combination with precision mechanics ensures high performance and long-term product reliability.

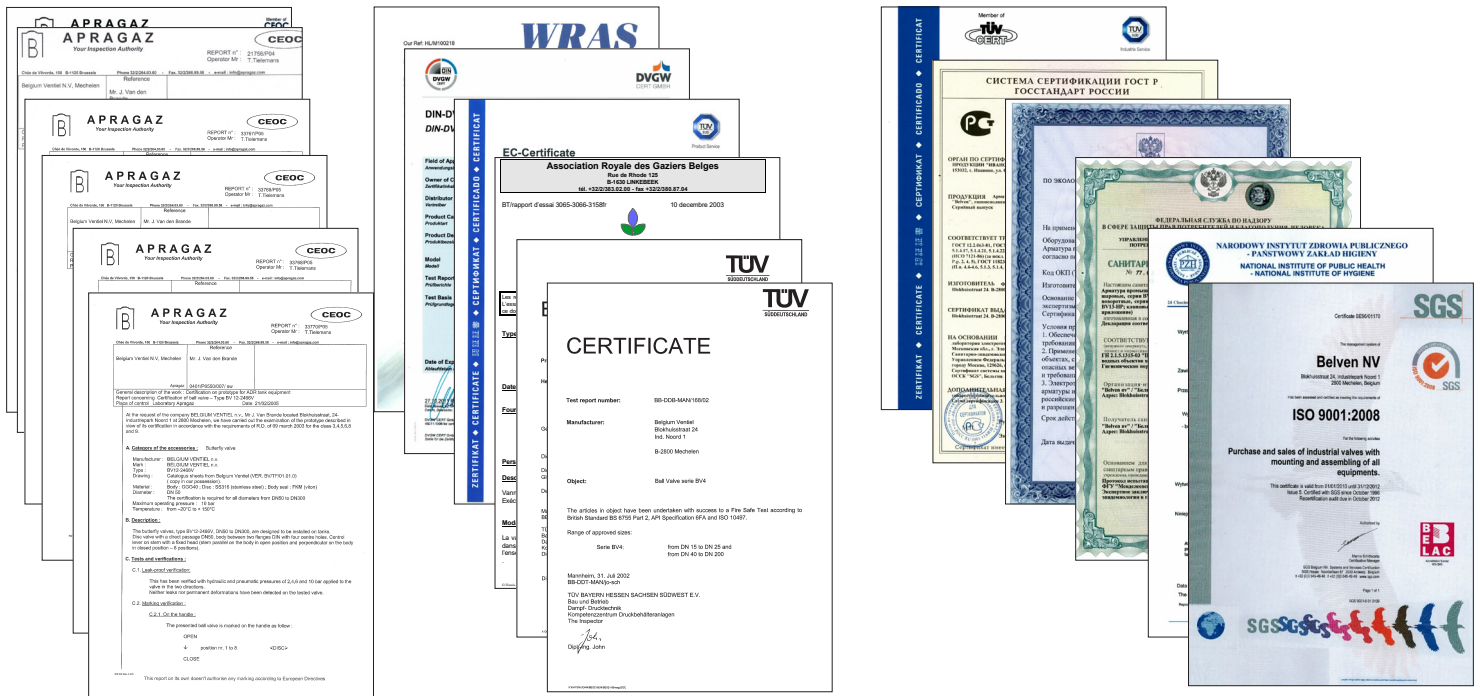
- Wide range of voltage options
- Self-locking gearbox
- All actuators are equipped with torque limiters
- Thermal protection
- The desired options, such as additional limit switches, mechanical position indicator, heating or an emergency handwheel can be integrated into the actuator.
- Closed/open or regulation service
- Different protection classes

Belven works with all major brands for electric actuators. Contact our sales department for more information.

ACCESSORIES

- Steel or stainless steel stem extension
- Visual indications
- Solenoid valves, available in different voltages and also in different protection classes
- Limit switches (mechanical, inductive, capacitive, ...)





ADR | WRAS | DIN-DVGW | ATEX | ARGB | ACS | TA-LUFT | FIRE SAFE | ISO | PED | EAC | ROSTECHNADZOR | HYGIENIC

international service



Belven affiliates : Netherlands, Dubai (UAE), Moscow, Hong Kong
Network of 35 distributors and agents in Europe

Belven Agencies & Distribution Network - www.belven.com

DESIGN / R&D



In order to define the type of valve and its appropriate execution for your application, our engineers will analyze the medium, the pressure and temperature and the desired type of operation. A 3D model can sometimes be used as a basis for this work, which is done in close collaboration with the universities of Leuven and Antwerp.

COMMERCIAL & TECHNICAL SUPPORT - LARGE STOCK



Our technical sales staff will assist you from A to Z in the selection of valves, in partnership with complementary suppliers if necessary, to ensure complete peace of mind regarding valves and strainers. Discuss this with your Belven contact person! The large stock in our central warehouse in Mechelen allows us to respond very quickly to our customers' needs and to anticipate any supply difficulties.

TESTING AND INSPECTION



At the request of our customers and in accordance with our own quality program, sample or full tests are carried out on our valves, both on arrival at the warehouse and before shipment. Belven has a state-of-the-art test stand and flanges for almost every type of connection up to 1000 mm diameter.

MAINTENANCE AND REVISION



All valves are subject to wear. Valve failure due to wear or lack of maintenance can have serious consequences for your process. Most Belven valves have been designed to allow for easy replacement of the seat and other wear-sensitive parts, which greatly increases their service life.

FOR THE TRAINING OF YOUR PERSONNEL: THE BELVEN ACADEMY



An optimal selection of the valve type and the know-how for a correct installation are essential to minimize costs and the risk of breakdowns. That is why the Belven Academy organizes high-level training courses for its end customers and installers, both in our demonstration and training area in Mechelen as directly at your premises.



Industrial Zone Mechelen North
Blokhuisstraat 24 | 2800 Mechelen | Belgium
tel.: 0032 15 29 40 70
info@belven.com
www.belven.com

