

BV36



- check valve - disco check wafer type
- with return spring
- flange connection to DIN PN10/16/40 and A150 / A-300
- F/F according to DIN EN 558-1
- easy and maintenance-free installation
- low opening resistance and low pressure drop
- automatically held in a centered position by the flange screws
- body and seats available in various materials

DIMENSIONS: DN15 - DN300 / 1/2" - 12"

BV38



- wafer type check valve
- flange connection according to PN10/16/40 and A-150/A-300
- short execution according to factory standard
- easy and maintenance-free installation
- low opening resistance and low pressure drop
- automatically held in a centered position by the flange screws
- bodies and seats available in various materials

DIMENSIONS: DN32 - DN600 / 1 1/2" - 24"

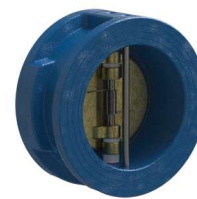
BV39



- wafer type check valve
- with return spring
- flange connection according to PN10/16/40 and A-150/A-300
- short execution according to factory standard
- easy and maintenance-free installation
- low opening resistance and low pressure drop
- automatically held in a centered position by the flange screws
- body and seats available in various materials

DIMENSIONS: DN32 - DN600 / 1 1/2" - 24"

BV40



- dual plate check valve
- with return spring
- flange connection according to PN10/16/40 and A-150/A-300
- dimensions according to factory standard
- easy and maintenance-free installation
- low opening resistance and low pressure drop
- automatically held in a centered position by the flange screws
- body and seats available in various materials

DIMENSIONS: DN50 - DN600 / 2" - 24"

BV41



- ball check valve
- flange connection according to PN10/16 and A-150
- Dimensions according to DIN EN 558-1 Series 48, ANSI B16.10
- easy and maintenance-free installation
- horizontal and vertical mounting
- bodies and seats available in various materials

DIMENSIONS: DN50 - DN600 / 2" - 24"