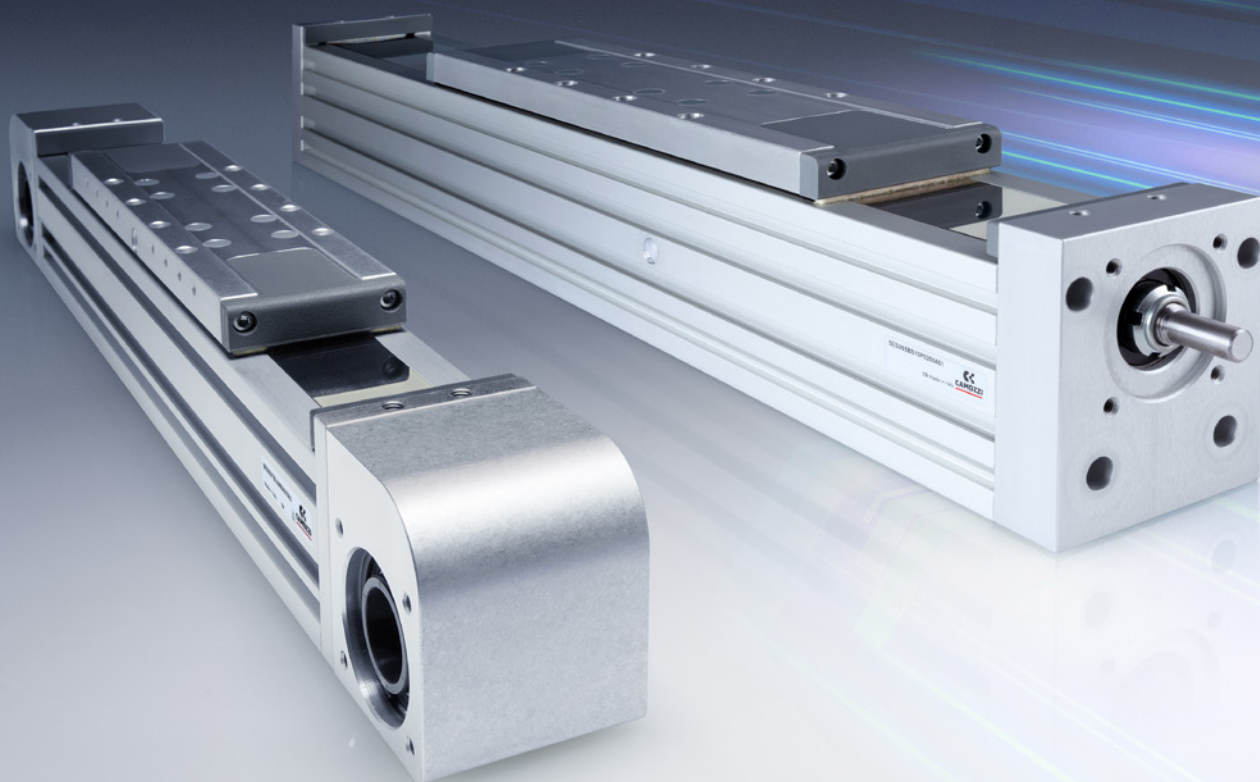


ELECTROMECHANICAL AXES SERIES 5E



SERIES 5E DESIGNED FOR ANY APPLICATION



Series 5E axes are mechanical linear actuators in which the rotary movement generated by a motor is converted into a linear movement using a toothed belt or a recirculating ball screw.

Series 5E, available in 3 sizes, 50, 65 and 80, is designed with a special self-supporting square profile with a recirculating ball guide integrated within the actuator, providing exceptional stiffness and resistance to external loads.

The profile is covered by a stainless steel plate to protect the internal elements from environmental contaminants. The axis is equipped with a magnet that allows external proximity switches, enabling operations like homing or extra-stroke readings to be performed.

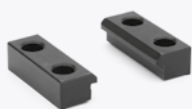
These two versions make the Series 5E suitable to meet the needs of different industries, including packaging, assembly and automotive.

The ultimate in flexibility and efficiency

Utilising a modular design, the Series 5E can be combined to create multi-axis solutions with different transmission technologies to guarantee maximum flexibility and adaptability for the customer.

Camozzi Automation is a trusted technology partner that supports customers from helping to select the best technical solutions, through to installation and commissioning of their chosen electromechanical system, whatever the application.

ACCESSORIES



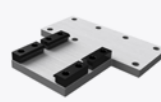
Side clamping bracket
Mod. BGS



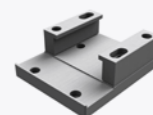
Interface plate
slider on slider



Interface plate
profile on slider



Interface plate
profile on slider



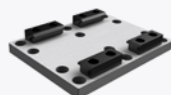
Interface plate - Series 6E
cylinder on slider



Interface plate - profile
side on slider - left pos.



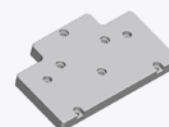
Interface plate - profile
side on slider - right pos.



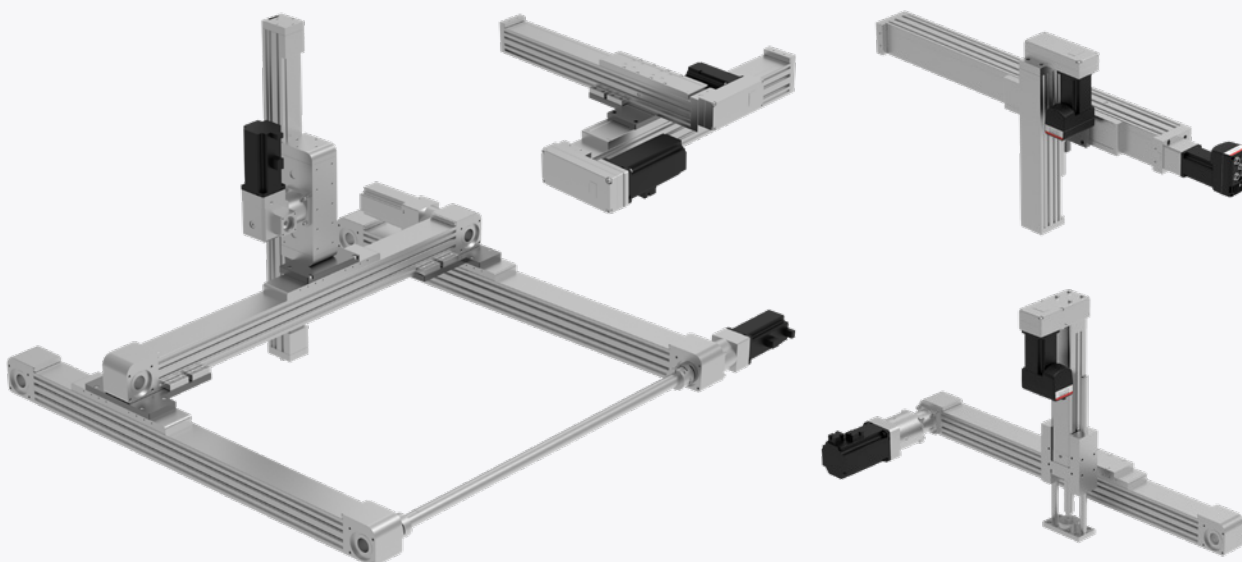
Fixed interface plate



Interface plate
Guide S. 45 / Cyl. S. 6E



5E/5V connection flange



SERIES 5ES...TBL

Multi-position system with movement transmission via a toothed belt.

MAIN TECHNICAL FEATURES

<i>Sizes</i>	50, 65, 80
<i>Protection class</i>	IP40
<i>Max stroke</i>	6 m
<i>Max speed</i>	5 m/s

BENEFITS



Suitable for high dynamics



Suitable for high speeds



SERIES 5ES...BS

Multi-position system with movement transmission via ball screw.

MAIN TECHNICAL FEATURES

<i>Sizes</i>	50, 65, 80
<i>Protection class</i>	IP40
<i>Repeatability</i>	± 0,02 mm
<i>Max force</i>	4000 N

BENEFITS



High accuracy and repeatability



High payload capacity



Series 5ES...BS vs Series 5ES...TBL

Series 5ES...BS



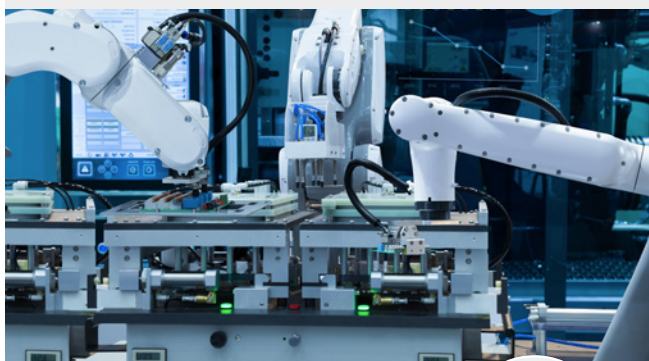
Series 5ES...TBL



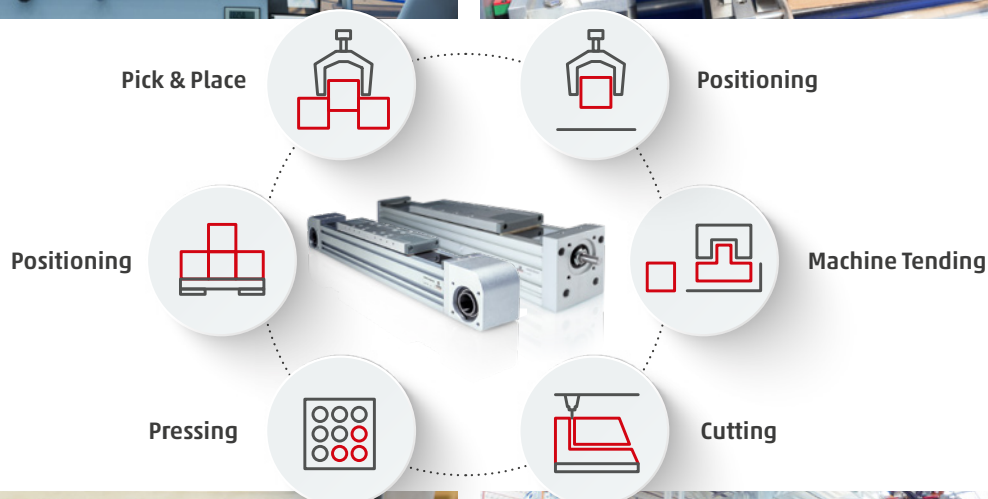
High force	●	●
High speed	●	●
Long stroke	●	●
High accuracy/repeatability	●	●

SECTORS AND APPLICATIONS

ASSEMBLY AND ROBOTICS



PACKAGING



FOOD PROCESSING



AUTOMOTIVE



Contacts

Camozzi Automation S.p.A.
Società Unipersonale
Via Eritrea, 20/I
25126 Brescia
Italy
Tel. +39 030 37921
marketing@camozzi.com

Customer Service
Tel. +39 030 3792790
service@camozzi.com

Export Department
Tel. +39 030 3792262
sales@camozzi.com

Want to learn more?
Stay in touch with
Camozzi news

