

Customized combination is a customer-oriented service meeting various combination needs for each user. Complete the following specifications sheet before placing an order. Additional models such as solenoid valves, etc., are available as well as conventional customized combinations.

- (1) Indicate the full model No. in the model No. field for the required part.
- (2) Place a "○" to indicate the installation position, and designate "Up" or "Down" for the direction of the required part.
- (3) Indicate "○" in the bracket and joiner fields.

-
- Technical drawing of a hydraulic filter assembly. The assembly consists of several components: a Filter regulator at the top left, a Pilot operated 2-port solenoid valve in the middle, a Check valve on the right, and a Lubricator at the bottom right. A pressure gauge is integrated into the left side of the assembly. Dimensions are indicated by arrows at the bottom, showing the face-to-face distances between the components. The drawing is a cross-sectional view, showing internal details of the valves and the filter element.
- Labels:
- Filter regulator
 - Pilot operated 2-port solenoid valve
 - Check valve
 - Lubricator
- Dimensions are calculated by totaling the face-to-face dimensions of each component. The bracket mounting position can also be calculated.

Date issued / /
 Company
 Contact
 Order No.

Flow direction	
Blank	Left → Right
X1	Right → Left

Designate the direction of compressed air flow as seen from the front.

Do not write anything when "blank" is selected.

[illegible]

Use the T-brackets at regular intervals. When the T-bracket uses a single end for support, up to three stations can be used. When it is supported on both ends, up to five stations can be used.

Only the indicated T-bracket is available.

Approval	Inspection	Contact

Leave it blank.
It is used by CKD when confirming your order.

1000 Series base

Issued	/	/
Your company name		
Contact		
Order No.		

№: **CXU10 – UN –** –

For products with the ★ mark, indicate up or down.
For regulator, indicate up/down for knob and other port directions.

Indicate the installation position from the left when seen from the front.

*1: The distance from pipe center to the mounting surface is 40 mm.
 *2: The distance from pipe center to the mounting surface is 45 mm.
 *3: When using a product at the end of the combination, a pipe adaptor (A100-UN, A101-UN) or masking adaptor (CXU10-MA) shall be used at its end. (The horizontal direction port does not have threads.)

Approval	Inspection	Contact

957

F.R.L.
F.R.
F (Filter)
R (Reg)
L (Lub)
Drain Separ
Mech Press SW
Res press exh valve
SlowStart
Anti-bac/Bac- remove Filt
Film Resist FR
Oil-ProhR
Med Press FR
No Cu/ PTFE FRL
Outdrs FRL
Adapter Joiner
Press Gauge
CompFRL
LgFRL
PrecsR
VacF/R
Clean FR
ElecPneur
AirBoost
Speed Ctr
Silncr
CheckV/ other
Fit/Tube
Nozzle
Air Unit
PrecsCompr
Electro Press SW
ContactSW
AirSens
PresSW Cool
Air Flo Sens/Ctrl
WaterRtSens
TotAirSys (Total Air)
TotAirSys (Gamma)
Gas generator
RefrDry
DesicDry
HiPolymDry
MainFiltr
Dischrg etc
Endins

Customized combination is a customer-oriented service meeting various combination needs for each user. Complete the following specifications sheet before placing an order. Additional models such as solenoid valves, etc., are available as well as conventional customized combinations.

- (1) Indicate the full model No. in the model No. field for the required part.
- (2) Place a "○" to indicate the installation position, and designate "Up" or "Down" for the direction of the required part.
- (3) Indicate "○" in the bracket and joiner fields.

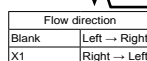
-
- Technical drawing of a hydraulic control assembly. The assembly consists of several components mounted on a common manifold. The components are labeled as follows:
- Filter regulator
 - Pressure switch
 - Pilot operated 5-port valve
 - T-bracket
- The drawing shows the front view of the assembly. The inlet port is labeled "IN". The drawing includes dimension lines indicating the face-to-face dimensions of each component. The dimensions are as follows:
- Filter regulator: 1.50
 - Pressure switch: 1.50
 - Pilot operated 5-port valve: 1.50
 - T-bracket: 1.50
- Dimensions are calculated by totaling the face-to-face dimensions of each component. The bracket mounting position can also be calculated.

Contact	Quantity	set (s)
Slip No.	Delivery date	/

Date issued	/	/
Company		
Contact		
Order No.		

CXU30 – UN – ☐ – ☒

Leave it blank.
It is used by CKD for your control No.



Designate the direction of compressed air flow as seen from the front.
Do not write anything when "blank" is selected

For products with the ★ mark, indicate up or down.

For regulator, indicate up/down for knob and other port directions.

Indicate the installation position from the left when seen from the front.

Part name	Interface dimensions	Model No.	Direction			Installation position								Technical use field
Filter regulator	50	W2000-10-W- W2100- -W												
	63	W3000- -W W3100- -W												
Air filter	50	F2000- -W												
	63	F3000- -W												
Oil mist filter	50	M2000-- -W												
	63	M3000- -W												
High-performance oil mist filter	63	MX3000- -W												
Regulator ★	50	R2000- -W R2100- -W												
	63	R3000- -W R3100- -W												
	63	L3000- -W												
Lubricator	63	L3000- -W												
Drain separator	63	FX1004- -W												
Pressure switch	80	P4000- -W												
	31.5	P4100-UN-10-W		*2									*2	
Residual pressure exhaust valve	63	V3000-10-W-S V3010- -W-												
Residual pressure exhaust 3-port solenoid valve	45	CXU30-VE-UN-00												
Direct start valve	63	V3301- -W/- V3321- -W/-												
Direct acting 2-port solenoid valve	50	CXU30-FAB4U-UN-6L-		*2										*2
Port kick 2-port solenoid valve	63	CXU30-ADK-UN-00-		*2										*2
Pilot operated 5-port valve	56	CXU30-4G2R-UN-33-CB-BS-3 CXU30-4G2R-UN-		*2									*2	
Distributor ★	31.5	D401-UN-00- -W		*2										*2
Distributor	42	D300- -W												
Turn adapter	22.5	CXU30-TA-UN-00												
Piping adapter	*3	A400-UN- -W												
L-type piping adapter★	31.5	A401-UN- -W												
Masking adapter	21.5	CXU30-MA-UN-00												
T type bracket set	*1	B310-UN-W												
Joiner set		C4000-J400-UN-W												

Please fill in this field
when using different
products such as
options, bore sizes, etc.

Use the T-brackets at regular intervals. When the T-bracket uses a single end for support, up to three stations can be used. When it is supported on both ends, up to five stations can be used. Only the indicated T-bracket is available.

Approval	Inspection	Contact
----------	------------	---------

Leave it blank.
It is used by CKD when confirming your order.

2000, 3000 Series base

Issued	/	/
Your company name		
Contact		
Order No.		

CXU30 – UN – –

For products with the ★ mark, indicate up or down.
For regulator, indicate up/down for knob and other port directions.

Indicate the installation position from the left when seen from the front.

*3: 20 mm for port sizes 8, 10 and 15, and 25 mm for port size 20.

Approval	Inspection	Contact

F.R.L.
F.R.
F (Filter)
R (Reg)
L (Lub)
Drain Separ Mech Press SW
Res press exh valve
SlowStart
Anti-bac/Bac- remove Filtr
Film Resist FR
Oil-ProhR
Med Press FR
No Cu/PTFE FRL
Outdrs FRL
Adapter Joiner
Press Gauge
CompFRL
LgFRL
PrecsR
VacF/R
Clean FR
ElecPneur
AirBoost
Speed Ctrl
Silncr
CheckV/ other
Fit/Tube
Nozzle
Air Unit
PresCompr
Electro Press SW
ContactSW
AirSens
PresSW Cool
Air Flo Sens/Ctrl
WaterRtSens
TotAirSys (Total Air)
TotAirSys (Gamma)
Gas generator
RefrDry
DesicDry
HiPolymDry
MainFiltr
Dischrg etc
Ending

Customized combination is a customer-oriented service meeting various combination needs for each user. Complete the following specifications sheet before placing an order. Additional models such as solenoid valves, etc., are available as well as conventional customized combinations.

- (1) Indicate the full model No. in the model No. field for the required part.
- (2) Place a "○" to indicate the installation position, and designate "Up" or "Down" for the direction of the required part.
- (3) Indicate "○" in the bracket and joiner fields.

-
- Direct acting 2-port solenoid valve
- Pilot operated 2-port valve
- T-bracket
- Regulator
- Filter

CXU30 Series customized combination specifications sheet

4000 Series base

Contact _____	Quantity _____ set (s)	Date issued _____ / _____ / _____
Slip No. _____	Delivery date _____ / _____	Company _____
		Contact _____
		Order No. _____

● Model No.

CXU30 – UN

Flow direction	
Blank	Left → Right
X1	Right → Left

Designate the direction of compressed air flow as seen from the front.

Do not write anything when "blank" is selected.

Leave it blank.

It is used by CKD for your control No.

For products with the ★ mark, indicate up or down.

For the regulator's knob direction, indicate up/down, and the port up/down for other components.

Indicate the installation position in order from the left as seen from the front

Part name	Interface dimensions	Model No.	Direction									Installation position	Technical use field
Filter regulator	63	W3000- -W W3100- -W	/										
	80	W4000- -W W4100- -W	/										
	63	F3000- -W	/										
Air filter	80	F4000-15-W	/	○									
Oil mist filter	63	M3000- -W	/										
	80	M4000- -W	/										
High-performance oil mist filter	63	MX3000- -W	/										
	80	MX4000- -W	/										
Regulator ★	63	R3000-- -W R3100- -W	/										
	80	R4000-15-W R4100- -W	Down		○								
	63	L3000- -W	/										
Lubricator	80	L4000- -W	/										
	63	FX1004- -W	/										
	80	FX1011- -W	/										
Drain separator	80	P4000- -W	/										
	31.5	P4100-UN- -W	/	*2								*	
Pressure switch	63	V3000- -W V3010- -W	/										
	45	CXU30-VE-UN-00	/										
Residual pressure exhaust valve	63	V3301- -W-	/										
Slow start valve	63	V3321- -W-	/										
Direct acting 2-port solenoid valve	50	CXu30-FAB4U-UN-8L-2HS-3	/	*2			○	○				*	
Pilot Oper 2-port solenoid valve	63	CXu30-ADK-UN-00-2HS-3	/	*2	○							*	
Pilot operated 5-port valve	56	Cxu30-4G2R-UN-	/	*2								*	
		CXu30-4G2R-UN-	/										
Distributor ★	31.5	D401-UN-00- -W	/	*2								*	
Distributor	42	D300- -W	/										
Tum adapter	22.5	CXu30-TA-UN-00	/										
Piping adapter	*3	A400-UN- -W	/										
L-type piping adapter★	31.5	A401-UN- -W	/										
Masking adapter	21.5	CXu30-MA-UN-00	/						○				

Use the T-brackets at regular intervals. When the T-bracket uses a single end for support, up to three stations can be used. When it is supported on both ends up to five stations can be used.

Only the indicated T-bracket is available.

Leave it blank.

It is used by CKD when confirming your order.

Approval	Inspection	Contact

CXU30 Series customized combination specifications sheet

4000 Series base

Contact _____
Slip No. _____

Quantity _____ Set _____
Delivery date _____ / _____

Issued _____ / _____ / _____
Your company name _____
Contact _____
Order No. _____

● Model No.

CXU30 — UN — —

Flow direction	
Blank	Left → Right
X1	Right → Left

For products with the ★ mark, indicate up or down.
For regulator, indicate up/down for knob and other port directions.

Indicate the installation position from the left when seen from the front.

Part name	Interface dimensions	Model No.	Direction	Installation position								Technical use field
Filter/regulator	63	W3000- -W	/									
		W3100- -W	/									
	80	W4000- -W	/									
		W4100- -W	/									
Air filter	63	F3000- -W	/									
	80	F4000- -W	/									
Oil mist filter	63	M3000- -W	/									
	80	M4000- -W	/									
High-performance oil mist filter	63	MX3000- -W	/									
	80	MX4000- -W	/									
Regulator ★	63	R3000- -W	/									
		R3100- -W	/									
	80	R4000- -W	/									
		R4100- -W	/									
Lubricator	63	L3000- -W	/									
	80	L4000- -W	/									
Drain separator	63	FX1004- -W	/									
	80	FX1011- -W	/									
Pressure switch	80	P4000- -W	/									
	31.5	P4100-UN- -W	/	*2							*2	
Residual pressure exhaust valve	63	V3000- -W	/									
		V3010- -W	/									
Residual pressure exhaust 3-port solenoid valve	45	CXU30-VE-UN-00	/									
Slow start valve	63	V3301- -W-	/									
		V3321- -W-	/									
Direct acting 2-port solenoid valve	50	CXU30-FAB4U-UN-8L-	/	*2							*2	
Pilot kick 2-port solenoid valve	63	CXU30-ADK-UN-00-	/	*2							*2	
Pilot operated 5-port valve	56	CXU30-4G2R-UN-	/	*2							*2	
		CXU30-4G2R-UN-	/									
Distributor ★	31.5	D401-UN-00- -W	/	*2							*2	
Distributor	42	D300- -W	/									
Turn adaptor	22.5	CXU30-TA-UN-00	/									
Pipe adaptor	*3	A400-UN- -W	/									
L type pipe adaptor ★	31.5	A401-UN- -W	/									
Masking adaptor	21.5	CXU30-MA-UN-00	/									
T type bracket set	*1	B410-UN-W										
Joiner set		C4000-J400-UN-W										

*1: The distance from pipe center to the mounting surface is 55 mm.

*2: When using a product at the end of the combination, a pipe adaptor (A400-UN, A401-UN) or masking adaptor (CXU30-MA) shall be used at its end. (The horizontal direction port does not have threads.)

*3: 20 mm for port sizes 8, 10 and 15, and 25 mm for port size 20.

Technical Comment Field	

Approval	Inspection	Contact

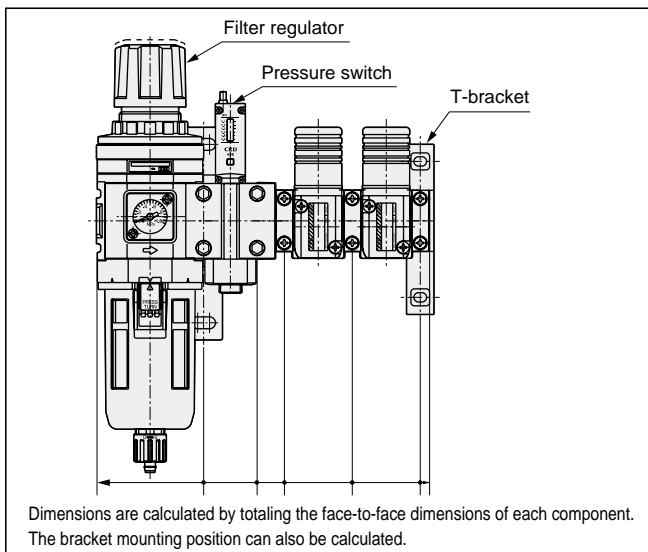
CKD

F.R.L.
F.R.
F (Filtr)
R (Reg)
L (Lub)
Drain
Separ
Mech
Press SW
Res press
exh valve
SlowStart
Anti-bac/Bac-
remove Filtr
Film
Resist FR
Oil-ProhR
Med
Press FR
No Cu/
PTFE FRL
Outdrs FRL
Adapter
Joiner
Press
Gauge
CompFRL
LgFRL
PrecsR
VacF/R
Clean FR
ElecPneuR
AirBoost
Speed Ctrl
Silncr
CheckV/
other
Fit/Tube
Nozzle
Air Unit
PresCompn
Electro
Press SW
ContactSW
AirSens
PresSW
Cool
Air Flo
Sens/Ctrl
WaterRISens
TotAirSys
(Total Air)
TotAirSys
(Gamma)
Gas
generator
RefrDry
DesicDry
HiPolymDry
MainFiltr
Dischrg
etc
Ending

Customized combination is a customer-oriented service meeting various combination needs for each user. Complete the following specifications sheet before placing an order. Additional models such as solenoid valves, etc., are available as well as conventional customized combinations.

- (1) Indicate the full model No. in the model No. field for the required part.
- (2) Place a "○" to indicate the installation position, and designate "Up" or "Down" for the direction of the required part.
- (3) Indicate "○" in the bracket and joiner fields.

- Refer to each section in this catalog by configuration for "How to order" and descriptions, etc.
- Only the FRL Standard White Series and air unit components (CXU) can be selected.
- If air unit components (CXU) are not included, use the C*000 specifications.



1000, 3000 Series mix

Contact _____	Quantity _____ set (s)	Date issued _____ / _____ / _____
Slip No. _____	Delivery date _____ / _____	Company _____
		Contact _____
		Order No. _____

● Model No. **CXU13 — UN —**

Leave it blank.
It is used by CKD for your control No.

Flow direction	
Blank	Left → Right
X1	Right → Left

Designate the direction of compressed air flow as seen from the front.
Do not write anything when "blank" is selected.

For products with the ★ mark, indicate up or down.
For regulator, indicate up/down for knob and other port directions.

Part name	Interface dimensions	Model No.	Direction	Installation position								Technical use field
Filter regulator	40: 1000 50: 2000 63: 3000	W3000-10-W W100- W										
Air filter	40: 1000 50: 2000 63: 3000	F000- -W										
Oil mist filter	40: 1000 50: 2000 63: 3000	M000- -W										
High-performance oil mist filter	40 63	MX1000- -W MX3000- -W										
Regulator	40: 1000 50: 2000 63: 3000	R000- -W R100- -W										
Lubricator	40 63	L1000- -W L3000- -W										
Drain separator	63 80	FX1004- -W P4000- -W										
Pressure switch	28 31.5	P1100-UN- -W P4100-UN-8-W		*2 *2						*2 *2		
Residual pressure exhaust valve	40 63	V1000- -W V300- -W		*2						*2		
Residual pressure exhaust 3-port solenoid valve	45	CXU30-V6-UN-00 Y3301- -W- Y3321- -W-										
Slow start valve	63	CXU10-EXA-UN-		*2						*2		
Pilot operated 2-port solenoid valve	40	CXU10-EXA-UN-		*2						*2		
Direct acting 2-port solenoid valve	40	CXU10-FAB3-UN-C6-2HS-3		*2						*2		
Direct acting 2-port solenoid valve	50	CXU30-FAB4U-UN-8L-		*2						*2		
Pilot kick 2-port solenoid valve	63	CXU30-ADK-UN-00-		*2						*2		
Pilot operated 5-port valve	56	CXU30-4G2R-UN- CXU30-4G2R-UN-		*2						*2		
Module check valve ★	56	CXU10-CHV-UN-00-		*2						*2		
Module conversion adapter	16 28	CXU13-CA-UN-00 D101-UN-00- -W		*2						*2		
Distributor ★	31.5 42	D401-UN-00- -W D300- -W		*2						*2		
Turn adapter	10 22.5	CXU10-TA-UN-00 CXU30-TA-UN-00										
Piping adapter	21.5 *3	A100-UN- -W A400-UN- -W										
L-type piping adapter ★	28 31.5	A101-UN- -W A401-UN- -W										
Masking adapter	10 21.5	CXU10-MA-UN-00 CXU30-MA-UN-00										
T type bracket set	*1	B310-H-UN-W										
T type bracket set	*1	B310-UN-W										
Joiner set		C1000-J100-UN-W										
Joiner set		C4000-M000-UN-W										

Use the T-brackets at regular intervals. When the T-bracket uses a single end for support, up to three stations can be used. When it is supported on both ends, up to five stations can be used.

Only the indicated T-bracket is available.

Leave it blank.
It is used by CKD when confirming your order.

