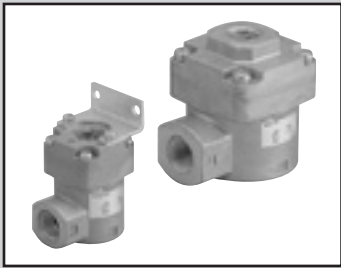


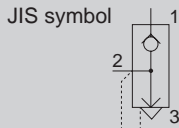
F.R.L.
F.R.
F (Filtr)
R (Reg)
L (Lub)
Drain
Separ
Mech
Press SW
Res press
exh valve
SlowStart
Anti-bac/Bac-
remove Filtr
Film
Resist FR
Oil-ProhrR
Med
Press FR
No Cu/
PTFE FRL
Outdrs FRL
Adapter
Joiner
Press
Gauge
CompFRL
LgFRL
PrecsR
VacF/R
Clean FR
ElecPneur
AirBoost
Speed Ctrl
Silncr
CheckV/
other
Fit/Tube
Nozzle
Air Unit
PrecsCompn
Electro
Press SW
ContactSW
AirSens
PresSW
Cool
Air Flo
Sens/Ctrl
WaterRtSens
TotAirSys
(Total Air)
TotAirSys
(Gamma)
Gas
generator
RefrDry
DesicDry
HiPolymDry
MainFiltr
Dischrg
etc
Ending



Quick exhaust valve

QEV2 Series

● Port size: Rc1/8 to Rc1



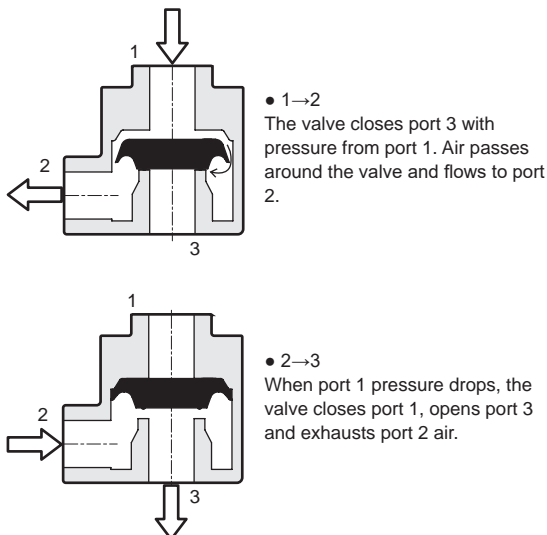
Features

- Large flow rate design realizing outstanding exhaust
- Variety of bore sizes available
Series includes piping bore sizes Rc1/8 to Rc1.
- Wide range of options
 - Fluoro rubber specifications available as options
 - Mounting bracket available (small bore)
- Eco-friendly product
 - Eco-friendly design is free of lead and hexavalent chrome
 - Paint-free
 - Waste sorting is simplified

Specifications

Model No.	QEV2-6	QEV2-8	QEV2-10	QEV2-15	QEV2-20	QEV2-25	
Working fluid	Compressed air						
Max. working pressure MPa	1.0 (≈150 psi, 10 bar)						
Min. working pressure MPa	0.05 (≈7.3 psi, 0.5 bar)						
Proof pressure MPa	1.5 (≈220 psi, 15 bar)						
Fluid temperature °C	5 (41°F) to 60 (140°F)						
Ambient temperature °C	0 (32°F) to 60 (140°F) (no freezing)						
Port size	1, 2	1/8	1/4	3/8	1/2	3/4	1
	Rc 3	1/4	1/4	1/2	1/2	1	1
Weight g	80	78	250	250	710	660	
Mounting bracket weight g	15		-				
Mounting orientation	Unrestricted						
Eff. X-sectional area mm ²	1→2	25	35	90	105	205	275
	2→3	30	40	100	115	280	330

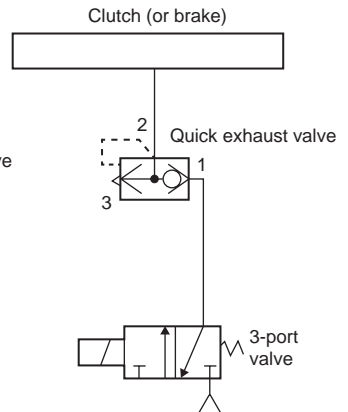
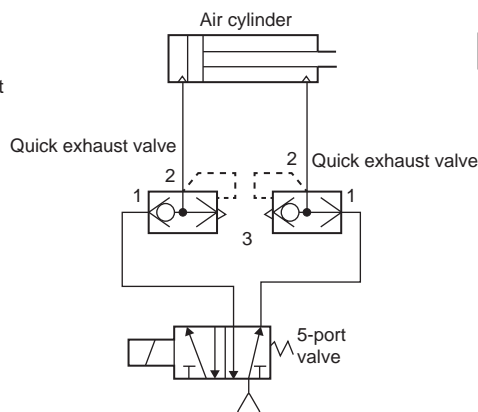
Operational explanation



Applications

(1) Use to increase exhaust speed of air cylinder.

(2) Use to increase exhaust speed of clutch (or brake)



How to order

- Quick exhaust valve

QEV2 - 6 - A P

Model No.

A Port size

B Option

C Accessory

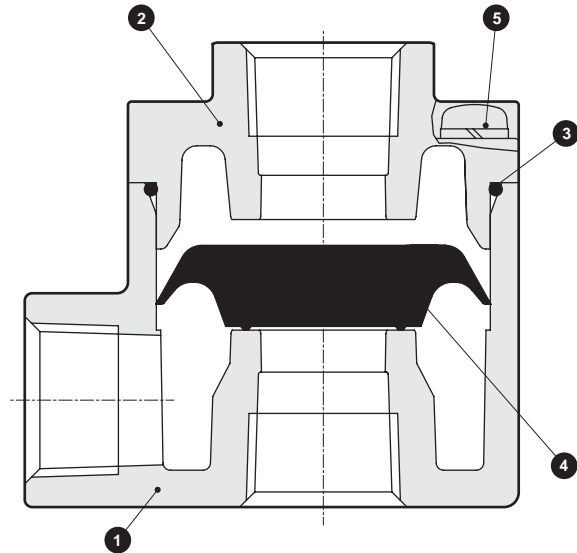
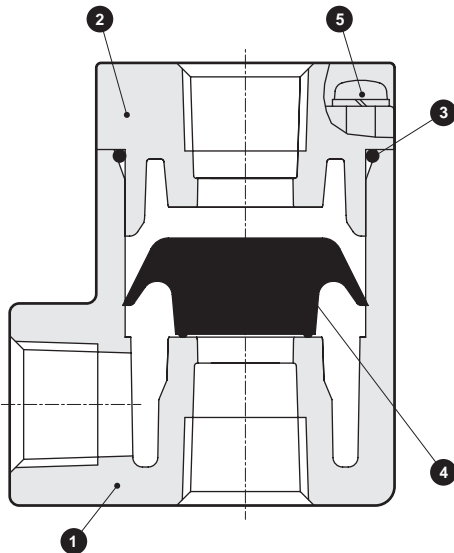
Code	Description
A Port size	
6	Rc 1/8
8	Rc 1/4
10	Rc 3/8
15	Rc 1/2
20	Rc 3/4
25	Rc 1
B Option	
Blank	No option
A	Fluoro rubber specifications
C Accessory	
Blank	None
P	Mounting bracket attached

*1: Mounting bracket is available for QEV2-6 and QEV2-8 only.

Internal structure and parts list

- QEV2-6/8

- QEV2-10/15/20/25



No.	Part name	Material
1	Body	Aluminum die-casting
2	Plug	Aluminum die-casting
3	O-ring	Nitrile rubber (fluoro rubber)
4	Valve	Hydrogenated nitrile rubber (fluoro rubber)
5	Cross-recessed pan head machine screw with switch	Stainless steel

* Materials shown in () are for option "A" (fluoro rubber specifications).

F.R.L.
F.R.
F (Filtr)
R (Reg)
L (Lub)
Drain Separ
Mech Press SW
Res press exh valve
SlowStart
Anti-bac/Bac-remove Filtr
Film Resist FR
Oil-ProhR
Med Press FR
No Cu/ PTFE FRL
Outdrs FRL
Adapter Joiner
Press Gauge
CompFRL
LgFRL
PrecsR
VacF/R
Clean FR
ElecPneuR
AirBoost
Speed Ctrl
Silncr
CheckV/ other
Fit/Tube
Nozzle
Air Unit
PresCompn
Electro Press SW
ContactSW
AirSens
PresSW Cool
Air Flo Sens/Ctrl
WaterR/Sens
TotAirSys (Total Air)
TotAirSys (Gamma)
Gas generator
RefrDry
DesicDry
HiPolymDry
MainFiltr
Dischrg etc
Ending

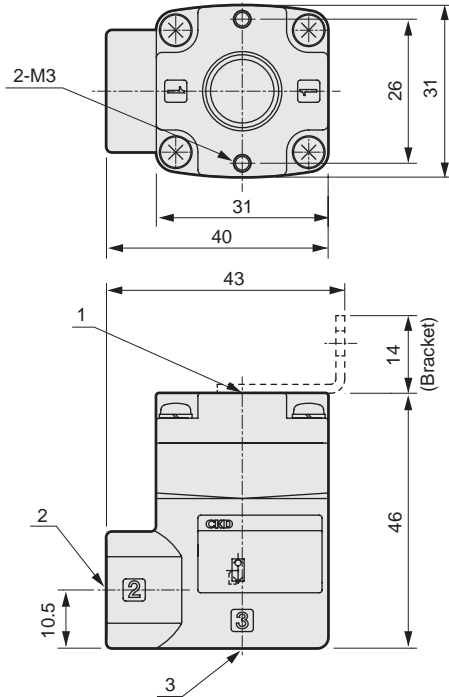
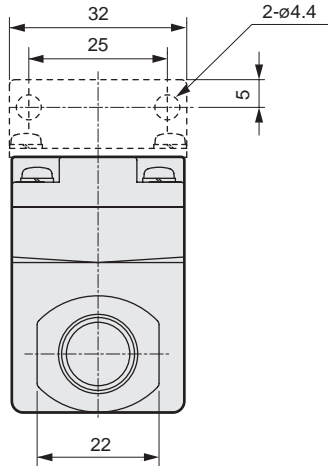
QEV2 Series



F.R.L. Dimensions

F.R. ● QEV2-6/8

- F (Filtr)
- R (Reg)
- L (Lub)
- Drain Separ
- Mech Press SW
- Res press exh valve
- SlowStart
- Anti-bac/Bac-remove Filtr
- Film Resist FR
- Oil-ProhR
- Med Press FR
- No Cu/PTFE FRL
- Outdrs FRL
- Adapter Joiner
- Press Gauge
- CompFRL
- LgFRL
- PrecsR



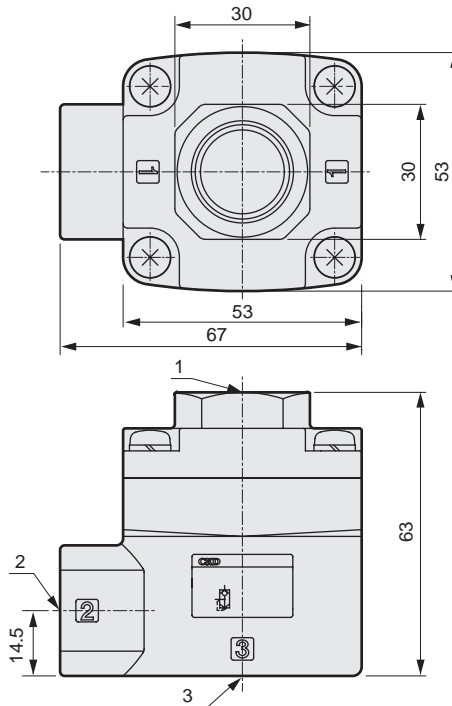
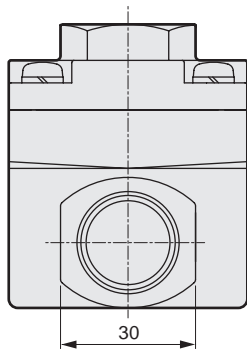
Model No.	Port position		
	1	2	3
QEV2-6	Rc 1/8		Rc 1/4
QEV2-8	Rc 1/4		

[Piping port indication]

Port code	Description
1	IN (Input)
2	OUT (Output)
3	EXH (Exhaust)

● QEV2-10/15

- Speed Ctrl
- Silncr
- CheckV/other
- Fit/Tube
- Nozzle
- Air Unit
- PrecsCompn
- Electro Press SW
- ContactSW
- AirSens
- PresSW Cool
- Air Flo Sens/Ctrl
- WaterRtSens
- TotAirSys (Total Air)
- TotAirSys (Gamma)
- Gas generator
- RefrDry
- DesicDry
- HiPolymDry
- MainFiltr
- Dischrg etc
- Ending



Model No.	Port position		
	1	2	3
QEV2-10	Rc 3/8		Rc 1/2
QEV2-15	Rc 1/2		

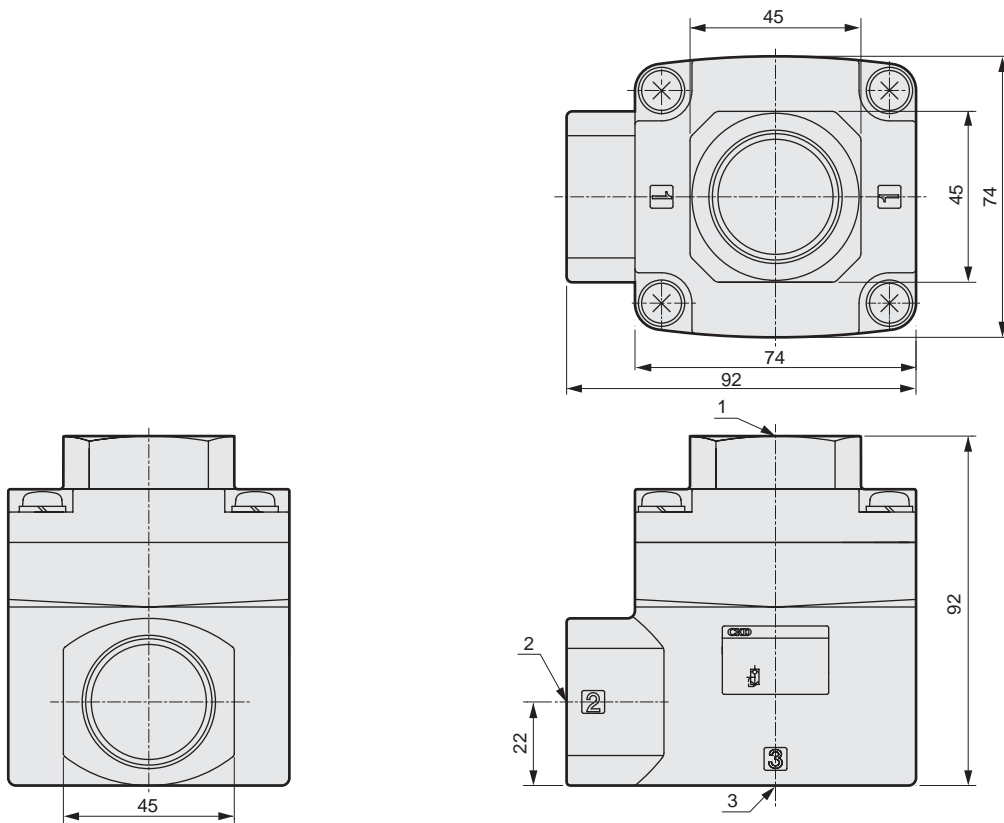
[Piping port indication]

Port code	Description
1	IN (Input)
2	OUT (Output)
3	EXH (Exhaust)

Dimensions



● QEV2-20/25



Model No.	Port position		
	1	2	3
QEV2-20	Rc 3/4		Rc 1
QEV2-25	Rc 1		

[Piping port indication]

Port code	Description
1	IN (Input)
2	OUT (Output)
3	EXH (Exhaust)

⚠ Safety precautions

■ Design/selection

- This valve cannot be used as a stop valve that requires no leakage. Slight leakage is allowed for in this product's specifications.
- In the following cases, vibration may cause malfunctions or abnormal noise.
 - When (IN) port 1 piping is extremely narrow and long or when the directional switching valve's orifice is small, generating residual or back pressure on the port 1 side.
 - When differential pressure of (IN) port 1 and (OUT) port 2 is lower than min. working pressure (0.05 MPa).
 - When the 2 (OUT) port side piping diameter is extremely restricted.

■ Mounting, installation and adjustment

- Apply the recommended tightening torque when connecting pipes.
 - The purpose is to prevent air leakage and damage to bolts.
 - First, tighten the bolts by hand to ensure that the threads are not damaged, then use a tool.
 - Do not tighten while pressure is applied.
- Install a pneumatic filter just before the pneumatic component in the circuit.

■ Use/maintenance

- Stop air flow and confirm that there is no residual pressure before replacing the tube.

[Recommended tightening torque]

	Tightening torque N·m
Rc 1/8	3 to 5
Rc 1/4	6 to 8
Rc 3/8	13 to 15
Rc 1/2	16 to 18
Rc 3/4	19 to 40
Rc 1	41 to 70

F.R.L.
F.R.
F (Filtr)
R (Reg)
L (Lub)
Drain Separ
Mech Press SW
Res press exh valve
SlowStart
Anti-bac/Bac-remove Filtr
Film Resist FR
Oil-ProhR
Med Press FR
No Cu/ PTFE FRL
Outdrs FRL
Adapter Joiner
Press Gauge
CompFRL
LgFRL
PrecsR
VacF/R
Clean FR
ElecPneuR
AirBoost
Speed Ctrl
Silncr
CheckV/ other
Fit/Tube
Nozzle
Air Unit
PrecsCompn
Electro Press SW
ContactSW
AirSens
PresSW Cool
Air Flo Sens/Ctrl
WaterRISens
TotAirSys (Total Air)
TotAirSys (Gamma)
Gas generator
RefrDry
DesicDry
HiPolymDry
MainFiltr
Dischrg etc
Ending