

VALVES AND SOLENOID VALVES

SERIES EN

5/2-way - 5/3-way CC, CO, CP
With outlets on the body - For individual or manifold assembly
Size 16 - 19 mm



- Mounting on any flat surface
- Reduced dimensions
- Aluminium body and end-covers in technopolymer
- Space saving

Camozzi has developed a new series of valves to be used in applications requiring a reduced space of installation and in situations where the valves need to be located as near as possible to the operating elements. The single valves can be mounted on any flat surface, allowing compact machine design, which is also enhanced by the reduced dimensions of the valve itself. Thanks to their robust aluminium bodies, the valves Series EN offer the highest reliability.

This new generation of solenoid valves is the evolution of the previous Series E, size 16 - 19 mm valve with ports threaded into the body. As this valve is completely interchangeable with Series E, part of the code is maintained though the valve has a completely new shape and new components.

General Data

Construction	Spool-type
Valve functions	5/2 - 5/3 CC - 5/3 CO - 5/3 CP
Materials	Body, spool, bases = AL End-covers = technopolymer Joints = NBR PU
Ports	G1/8 - G1/4
Temperature	0°C min. + 50° C max
Fluid	Filtered air without lubricant. If lubricated air is used, it is recommended to use ISOVG32 oil and to never interrupt lubrication.
Voltage	See coding
Voltage tolerance	± 10%
Power consumption	2W, 1W
Class of insulation	Class F
Protection class	IP65 with connector DIN 40050

VALVES AND SOLENOID VALVES
SERIES EN - CODING EXAMPLES

Coding Example

EN	5	3	1	-	11	-	PN3
EN	SERIES						
5	FUNCTION 5 = 5/2 6 = 5/3 Centre Closed 7 = 5/3 Centre Open 8 = 5/3 Pressure Centre						
3	SIZE 3 = 16 5 = 19						
1	BODY TYPE 1 = Body with threaded plate						
11	ACTUATION 11 = Electro-pneumatic, bistable 16 = Electro-pneumatic, monostable 33 = Pneumatic bistable 36 = Pneumatic monostable E11 = Electro-pneumatic, bistable with external servo-pilot supply E16 = Electro-pneumatic, monostable with external servo-pilot supply						
PN3	TYPE OF SOLENOID PN3 = 24V DC - 1W P13 = 24V DC - 1W PN4 = 48V DC - 2W PN6 = 110V DC - 2W PN7 = 230V - 2W P53 = 24V DC - 2W P54 = 48V DC - 2W P56 = 110V DC - 2W W53 = 24V DC - 2W W54 = 48V DC - 2W In case of applications with alternate current, use a bridge rectifier connector (see the connectors at the end of the section).						

VALVES AND SOLENOID VALVES

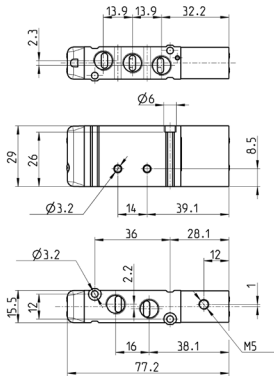
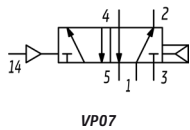
6

Pneumatically actuated valve, monostable - size 16

5/2-way



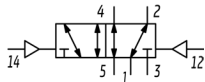
The pilot pressure should never be lower than the operating pressure.



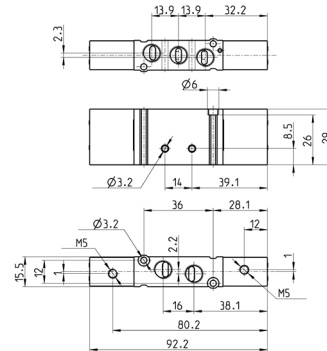
Mod.	Ports	Pilot supply	Pilot supply pressure [bar]	Operating pressure [bar]	Flow [NL/min]
EN531-36	G1/8	M5	2,5 ÷ 10	-0,9 ÷ 10	550

Pneumatically actuated valve, bistable - size 16

5/2-way



VP06

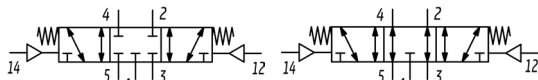


Mod.	Ports	Pilot supply	Pilot supply pressure [bar]	Operating pressure [bar]	Flow [NL/min]
EN531-33	G1/8	M5	2 ÷ 10	-0,9 ÷ 10	550

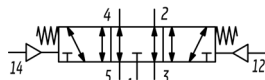
Pneumatically actuated valve - size 16

5/3-way

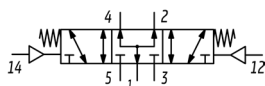
CC = Centres closed
 CO = Centres open
 CP = Pressure Centres



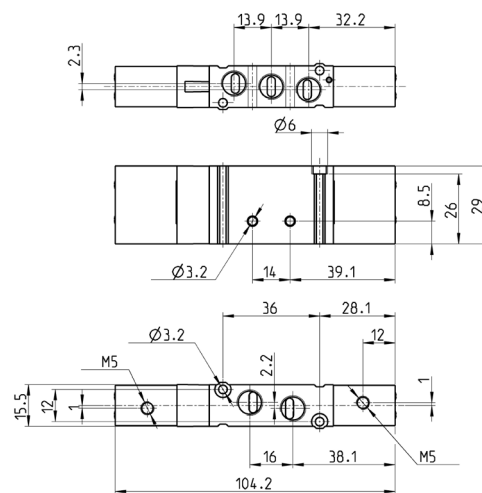
VP08



VP09



VP10

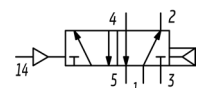


Mod.	Ports	Pilot supply	Pilot supply pressure [bar]	Operating pressure [bar]	Flow [NL/min]	Symbol
EN631-33	G1/8	M5	3 ÷ 10	-0,9 ÷ 10	550	VP08
EN731-33	G1/8	M5	3 ÷ 10	-0,9 ÷ 10	550	VP09
EN831-33	G1/8	M5	3 ÷ 10	-0,9 ÷ 10	550	VP10

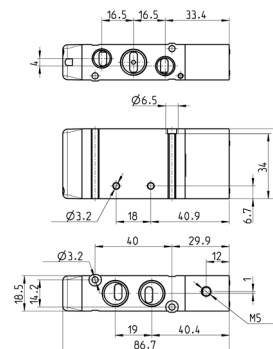
Pneumatically actuated valve, monostable - size 19

5/2-way

The pilot pressure should never be lower than the operating pressure.



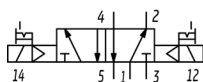
VP07



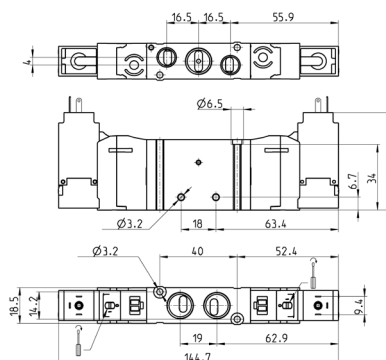
Mod.	Ports 1-2-4	Ports 3-5	Pilot supply	Pilot supply pressure [bar]	Operating pressure [bar]	Flow [NL/min]
EN551-36	G1/4	G1/8	M5	2,5 ÷ 10	-0,9 ÷ 10	920

Electro-pneumatically actuated valve, bistable - size 19

5/2-way



EV23



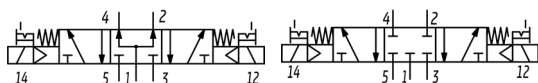
Mod.	Ports 1-2-4	Ports 3-5	Operating pressure [bar]	Flow [l/min]
EN551-11-PN..	G1/4	G1/8	2 ÷ 10	920

Electro-pneumatically actuated valve - size 19

5/3-way

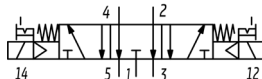


CC = Centres Closed
CO = Centres Open
CP = Pressure Centres

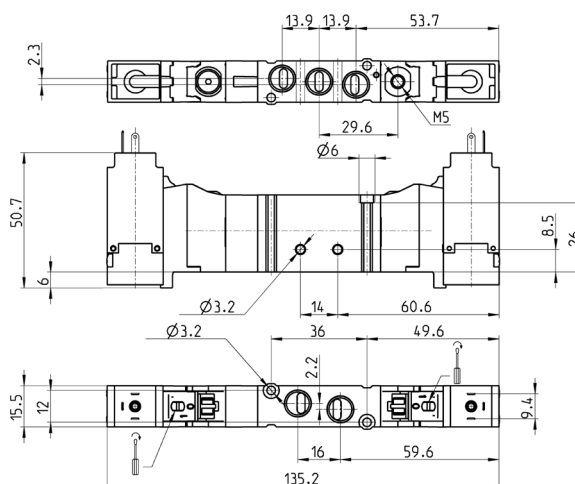


EV36

EV28



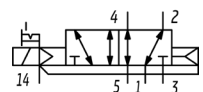
EV32



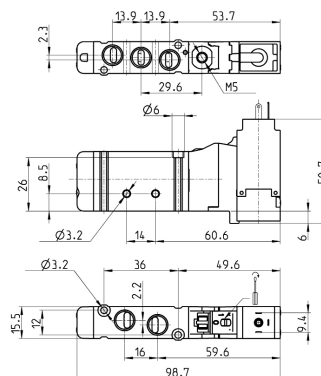
Mod.	Ports 1-2-4	Ports 3-5	Operating pressure [bar]	Flow [l/min]	Symbol
EN651-11-PN..	G1/4	G1/8	3 ÷ 10	920	EV28
EN751-11-PN..	G1/4	G1/8	3 ÷ 10	920	EV32
EN851-11-PN..	G1/4	G1/8	3 ÷ 10	920	EV36

Electro-pneum. valve, monostable - ext. servo-pilot supply - size 16

5/2-way



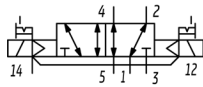
EV22



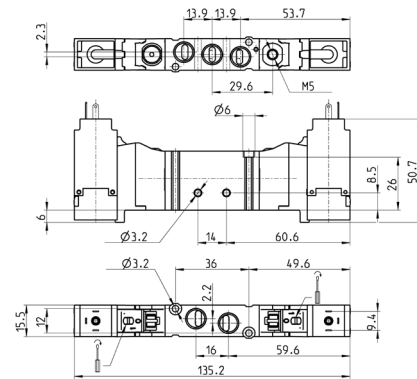
Mod.	Ports	Pilot supply	Pilot supply pressure [bar]	Operating pressure [bar]	Flow [l/min]
EN531-E16-PN..	G1/8	M5	2.5 ÷ 10	- 0.9 ÷ 10	550

Electro-pneum. valve, bistable - ext. servo-pilot supply - size 16

5/2-way



EV26



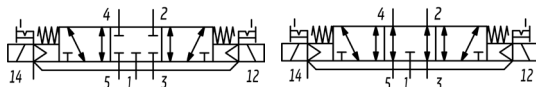
Mod.	Ports	Pilot supply	Pilot supply pressure [bar]	Operating pressure [bar]	Flow [NL/min]
EN531-E11-PN..	G1/8	M5	2 ÷ 10	-0,9 ÷ 10	550

Electro-pneum. valve - ext. servo-pilot supply - size 16

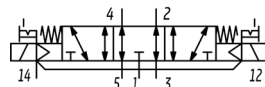
5/3-way



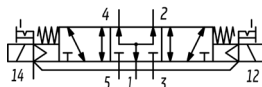
CC = Centres Closed
 CO = Centres Open
 CP = Pressure Centres



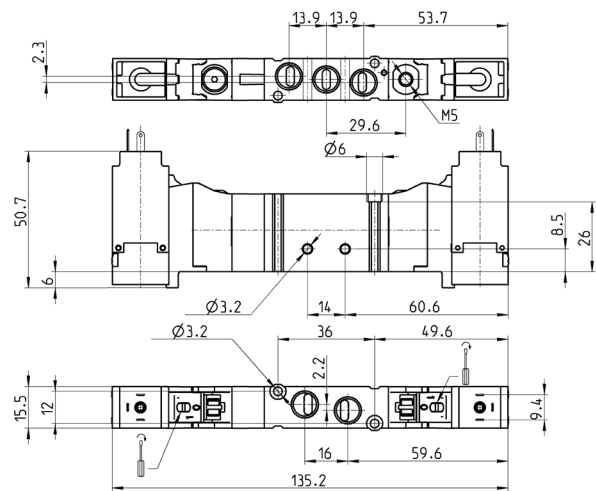
EV30



EV33



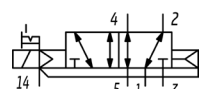
EV38



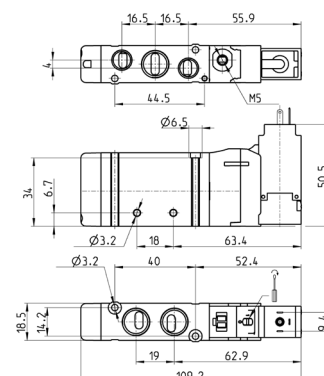
Mod.	Ports	Pilot supply	Pilot supply pressure [bar]	Operating pressure [bar]	Flow [NL/min]	Symbol
EN631-E11-PN..	G1/8	M5	3 ÷ 10	-0,9 ÷ 10	550	EV30
EN731-E11-PN..	G1/8	M5	3 ÷ 10	-0,9 ÷ 10	550	EV33
EN831-E11-PN..	G1/8	M5	3 ÷ 10	-0,9 ÷ 10	550	EV38

Electro-pneum. valve, monostable - ext. servo-pilot supply - size 19

5/2-way



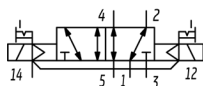
EV22



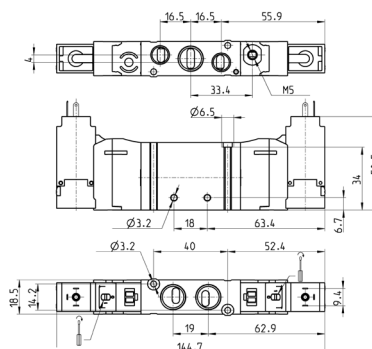
Mod.	Ports 1-2-4	Ports 3-5	Pilot supply	Pilot supply pressure [bar]	Operating pressure [bar]	Flow [NL/min]
EN551-E16-PN..	G1/4	G1/8	M5	2,5 ÷ 10	- 0,9 ÷ 10	920

Electro-pneum. valve, bistable - ext. servo-pilot supply - size 19

5/2-way



EV26



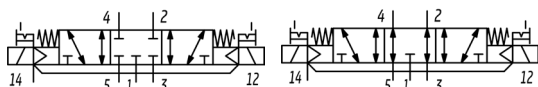
Mod.	Ports 1-2-4	Ports 3-5	Pilot supply	Pilot supply pressure [bar]	Operating pressure [bar]	Flow [NL/min]
EN551-E11-PN..	G1/4	G1/8	M5	2 ÷ 10	-0,9 ÷ 10	920

Electro-pneum. valve - ext. servo-pilot supply - size 19

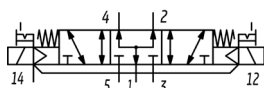
5/3-way



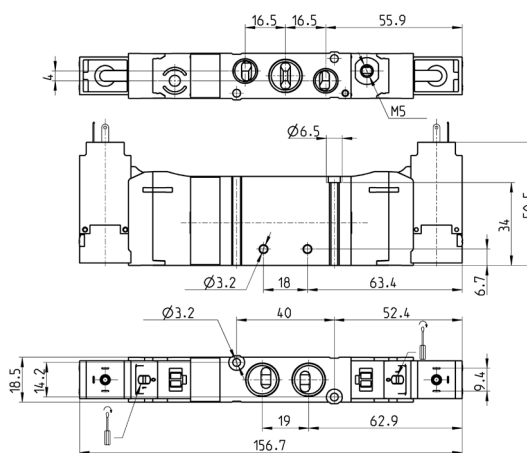
CC = Centres Closed
CO = Centres Open
CP = Pressure Centres



EV30



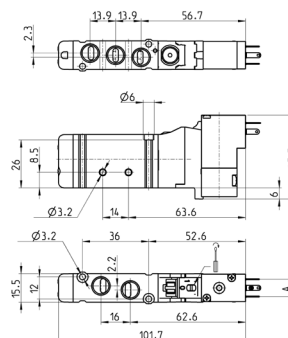
EV38



Mod.	Ports 1-2-4	Ports 3-5	Pilot supply	Pilot supply pressure [bar]	Operating pressure [bar]	Flow [NL/min]	Symbol
EN651-E11-PN..	G1/4	G1/8	M5	3 ÷ 10	-0,9 ÷ 10	920	EV30
EN751-E11-PN..	G1/4	G1/8	M5	3 ÷ 10	-0,9 ÷ 10	920	EV33
EN851-E11-PN..	G1/4	G1/8	M5	3 ÷ 10	-0,9 ÷ 10	920	EV38

Electro-pneum. valve, monostable, solenoid P, W - size 16

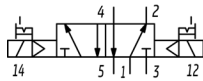
5/2-way



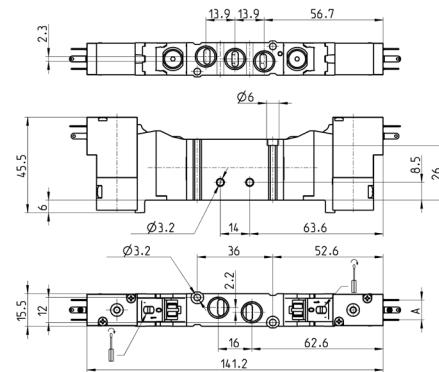
Mod.	Ports	A	Operating pressure [bar]	Flow [NL/min]
EN531-16-P13	G1/8	9,4	2,5 ÷ 10	550
EN531-16-P54	G1/8	9,4	2,5 ÷ 10	550
EN531-16-P56	G1/8	9,4	2,5 ÷ 10	550
EN531-16-W53	G1/8	8	2,5 ÷ 10	550
EN531-16-W54	G1/8	8	2,5 ÷ 10	550

Electro-pneum. valve, bistable, solenoid P, W - size 16

5/2-way



EV23



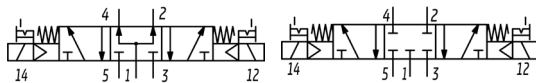
Mod.	Ports	A	Operating pressure [bar]	Flow [NL/min]
EN531-11-P13	G1/8	9,4	2 ÷ 10	550
EN531-11-P54	G1/8	9,4	2 ÷ 10	550
EN531-11-P56	G1/8	9,4	2 ÷ 10	550
EN531-11-W53	G1/8	8	2 ÷ 10	550
EN531-11-W54	G1/8	8	2 ÷ 10	550

Electro-pneumatic valve, solenoid P, W - size 16

5/3-way

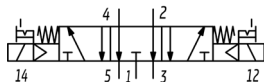


CC = Centres Closed
 CO = Centres Open
 CP = Pressure Centres

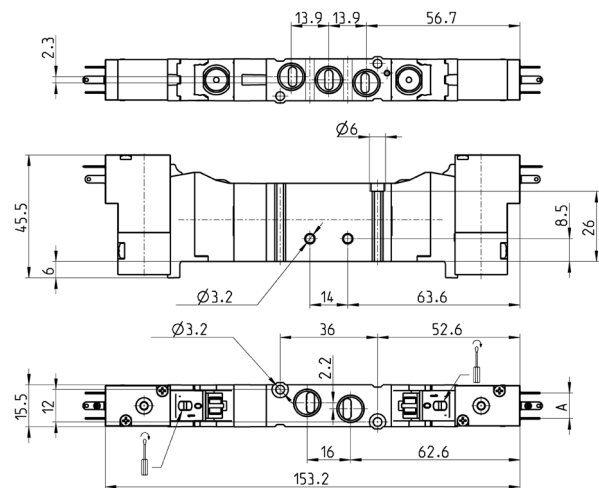


EV36

EV28



EV32

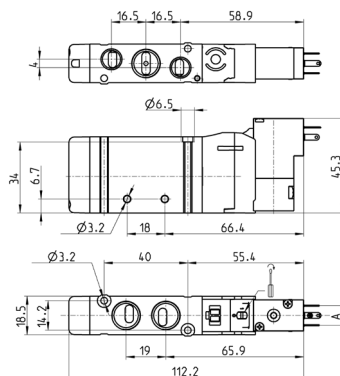


Mod.	Ports	A	Operating pressure [bar]	Flow [NL/min]	Symbol
EN631-11-P..	G1/8	9,4	3 ÷ 10	550	EV28
EN731-11-P..	G1/8	9,4	3 ÷ 10	550	EV32
EN831-11-P..	G1/8	9,4	3 ÷ 10	550	EV36
EN631-11-W..	G1/8	8	3 ÷ 10	550	EV28
EN731-11-W..	G1/8	8	3 ÷ 10	550	EV32
EN831-11-W..	G1/8	8	3 ÷ 10	550	EV36

VALVES AND SOLENOID VALVES
SERIES EN - DIMENSIONS

Electro-pneum. valve, monostable, solenoid P, W - size 19

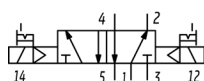
5/2-way



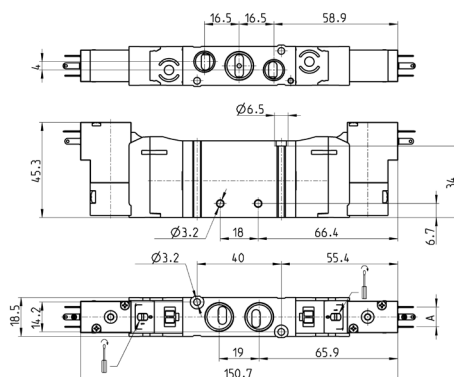
Mod.	Ports 1-2-4	Ports 3-5	A	Operating pressure [bar]	Flow [l/min]
EN551-16-P13	G1/4	G1/8	9,4	2,5 ÷ 10	920
EN551-16-P54	G1/4	G1/8	9,4	2,5 ÷ 10	920
EN551-16-P56	G1/4	G1/8	9,4	2,5 ÷ 10	920
EN551-16-W53	G1/4	G1/8	8	2,5 ÷ 10	920
EN551-16-W54	G1/4	G1/8	8	2,5 ÷ 10	920

Electro-pneum. valve, bistable, solenoid P, W - size 19

5/2-way



EV23



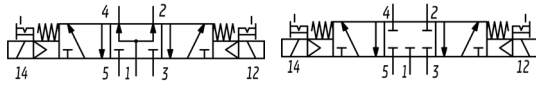
Mod.	Ports 1-2-4	Ports 3-5	A	Operating pressure [bar]	Flow [l/min]
EN551-11-P13	G1/4	G1/8	9,4	2 ÷ 10	920
EN551-11-P54	G1/4	G1/8	9,4	2 ÷ 10	920
EN551-11-P56	G1/4	G1/8	9,4	2 ÷ 10	920
EN551-11-W53	G1/4	G1/8	8	2 ÷ 10	920
EN551-11-W54	G1/4	G1/8	8	2 ÷ 10	920

Electro-pneumatic valve, solenoid P, W - size 19

5/3-way



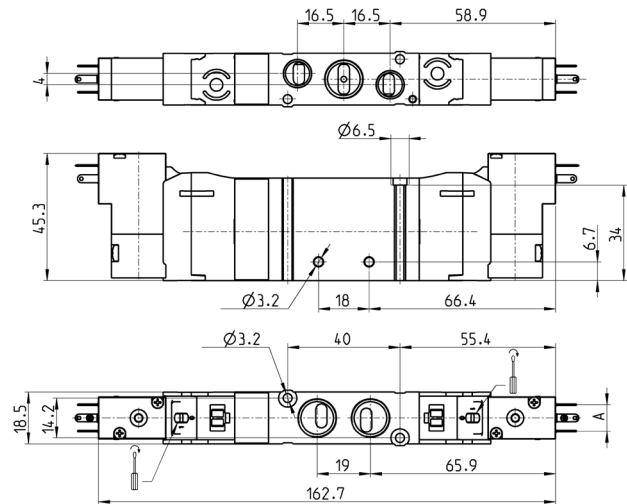
CC = Centres Closed
CO = Centres Open
CP = Pressure Centres



EV36

EV28

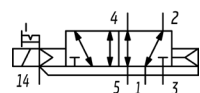
EV32



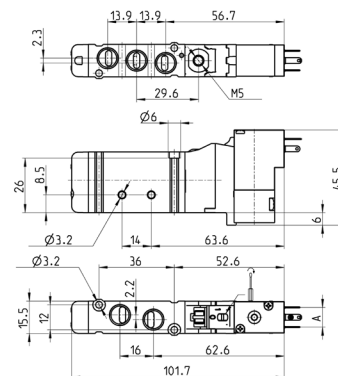
Mod.	Ports 1-2-4	Ports 3-5	A	Operating pressure [bar]	Flow [Nl/min]	Symbol
EN651-11-P..	G1/4	G1/8	9,4	3 ÷ 10	920	EV28
EN751-11-P..	G1/4	G1/8	9,4	3 ÷ 10	920	EV32
EN851-11-P..	G1/4	G1/8	9,4	3 ÷ 10	920	EV36
EN651-11-W..	G1/4	G1/8	8	3 ÷ 10	920	EV28
EN751-11-W..	G1/4	G1/8	8	3 ÷ 10	920	EV32
EN851-11-W..	G1/4	G1/8	8	3 ÷ 10	920	EV36

Electro-pneum. valve, monost. ext. servo-pilot sup., sol. P/W - size 16

5/2-way



EV22

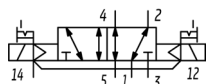


Mod.	Ports	A	Pilot supply	Pilot supply pressure [bar]	Operating pressure [bar]	Flow [Nl/min]
EN531-E16-P..	G1/8	9,4	M5	2,5 ÷ 10	-0,9 ÷ 10	550
EN531-E16-W..	G1/8	8	M5	2,5 ÷ 10	-0,9 ÷ 10	550

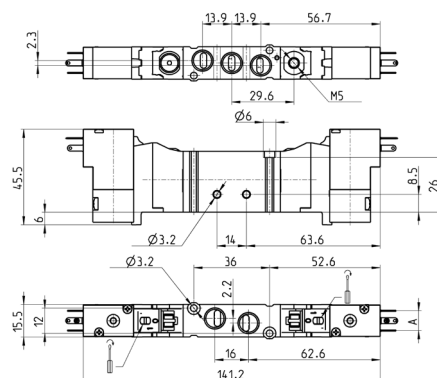
VALVES AND SOLENOID VALVES
SERIES EN - DIMENSIONS

Electro-pneum. valve, bistable ext. servo-pilot sup., sol. P/W - size 16

5/2-way



EV26

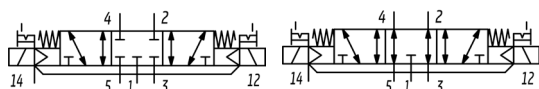


Mod.	Ports	A	Pilot supply	Pilot supply pressure [bar]	Operating pressure [bar]	Flow [NL/min]
EN531-E11-P..	G1/8	9,4	M5	2 ÷ 10	-0,9 ÷ 10	550
EN531-E11-W..	G1/8	8	M5	2 ÷ 10	-0,9 ÷ 10	550

Electro-pneum. valve, ext. servo-pilot supply, solenoid P, W - size 16

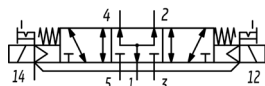
5/3-way

CC = Centres Closed
CO = Centres Open
CP = Pressure Centres

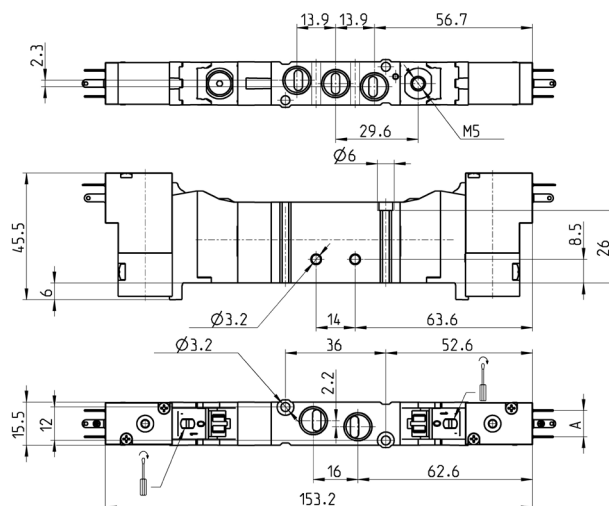


EV30

EV33



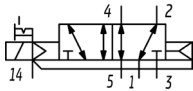
EV38



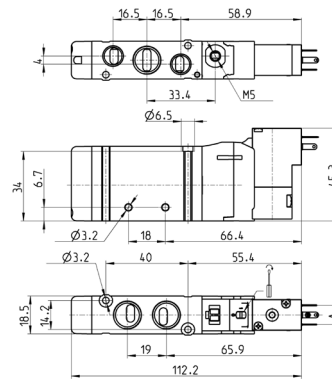
Mod.	Ports	A	Pilot supply	Pilot supply pressure [bar]	Operating pressure [bar]	Flow [NL/min]	Symbol
EN631-E11-P..	G1/8	9,4	M5	3 ÷ 10	-0,9 ÷ 10	550	EV30
EN731-E11-P..	G1/8	9,4	M5	3 ÷ 10	-0,9 ÷ 10	550	EV33
EN831-E11-P..	G1/8	9,4	M5	3 ÷ 10	-0,9 ÷ 10	550	EV38
EN631-E11-W..	G1/8	8	M5	3 ÷ 10	-0,9 ÷ 10	550	EV30
EN731-E11-W..	G1/8	8	M5	3 ÷ 10	-0,9 ÷ 10	550	EV33
EN831-E11-W..	G1/8	8	M5	3 ÷ 10	-0,9 ÷ 10	550	EV38

Electro-pneum. valve, monost. ext. servo-pilot sup., sol. P/W - size 19

5/2-way



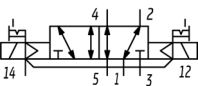
EV22



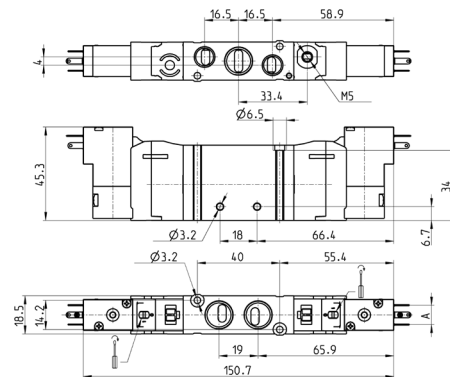
Mod.	Ports 1-2-4	Ports 3-5	A	Pilot supply	Pilot supply pressure [bar]	Operating pressure [bar]	Flow [NL/min]
EN551-E16-P..	G1/4	G1/8	9,4	M5	2,5 ÷ 10	-0,9 ÷ 10	920
EN551-E16-W..	G1/4	G1/8	8	M5	2,5 ÷ 10	-0,9 ÷ 10	920

Electro-pneum. valve, bistable ext. servo-pilot sup., sol. P/W - size 19

5/2-way



EV26



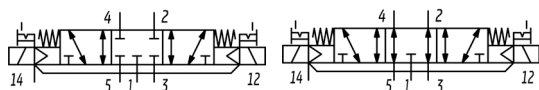
Mod.	Ports 1-2-4	Ports 3-5	A	Pilot supply	Pilot supply pressure [bar]	Operating pressure [bar]	Flow [NL/min]
EN551-E11-P..	G1/4	G1/8	9,4	M5	2 ÷ 10	-0,9 ÷ 10	920
EN551-E11-W..	G1/4	G1/8	8	M5	2 ÷ 10	-0,9 ÷ 10	920

VALVES AND SOLENOID VALVES
SERIES EN - DIMENSIONS

Electro-pneum. valve, ext. servo-pilot supply, solenoid P, W - size 19

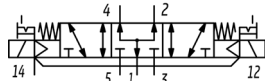
5/3-way

CC = Centres Closed
CO = Centres Open
CP = Pressure Centres

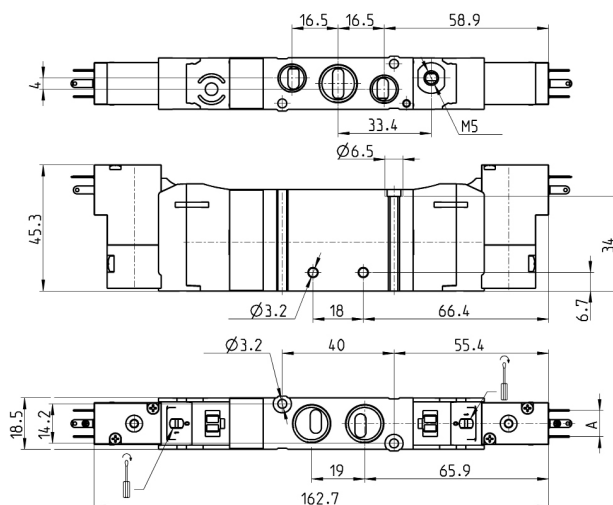


EV30

EV33

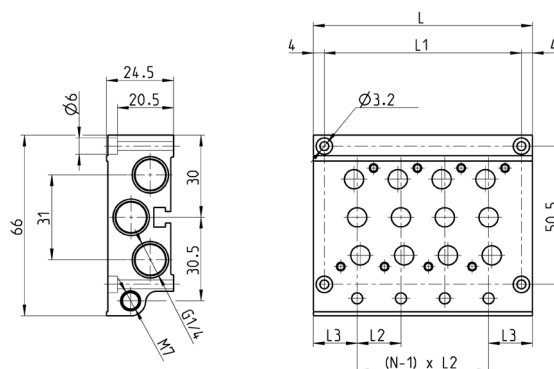


EV38



Mod.	Ports 1-2-4	Ports 3-5	A	Pilot supply	Pilot supply pressure [bar]	Operating pressure [bar]	Flow [NL/min]	Symbol
EN651-E11-P..	G1/4	G1/8	9,4	M5	3 ÷ 10	-0,9 ÷ 10	920	EV30
EN751-E11-P..	G1/4	G1/8	9,4	M5	3 ÷ 10	-0,9 ÷ 10	920	EV33
EN851-E11-P..	G1/4	G1/8	9,4	M5	3 ÷ 10	-0,9 ÷ 10	920	EV38
EN651-E11-W..	G1/4	G1/8	8	M5	3 ÷ 10	-0,9 ÷ 10	920	EV30
EN751-E11-W..	G1/4	G1/8	8	M5	3 ÷ 10	-0,9 ÷ 10	920	EV33
EN851-E11-W..	G1/4	G1/8	8	M5	3 ÷ 10	-0,9 ÷ 10	920	EV38

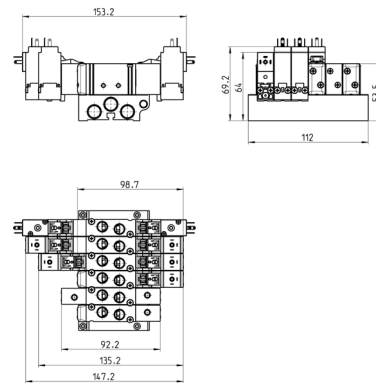
Manifold for valves size 16 and 19 (outlets on the body valve)



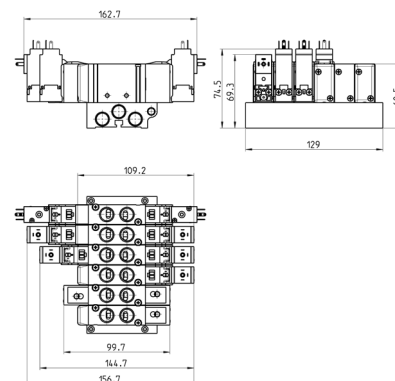
Mod.	Nr of valve positions	L	L1	L2	L3
EN531-1002	2	48	40	16	16
EN531-1003	3	64	56	16	16
EN531-1004	4	80	72	16	16
EN531-1005	5	96	88	16	16
EN531-1006	6	112	104	16	16
EN531-1008	8	144	136	16	16
EN531-1010	10	176	168	16	16
EN531-1012	12	208	200	16	16
EN551-1002	2	53	45	19	17
EN551-1003	3	72	64	19	17
EN551-1004	4	91	83	19	17
EN551-1005	5	110	102	19	17
EN551-1006	6	129	121	19	17
EN551-1008	8	167	159	19	17
EN551-1010	10	205	197	19	17
EN551-1012	12	243	235	19	17

Manifolds complete with valves with outlets on the body - size 16

ports G1/8


Manifolds complete with valves with outlets on the body - size 19

ports G1/4



VALVES AND SOLENOID VALVES
SERIES EN - CODING EXAMPLES

Coding Example

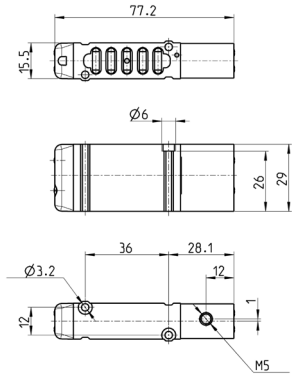
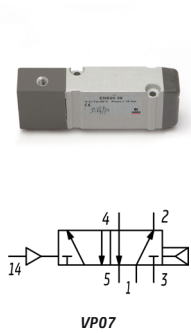
EN	5	3	0	-	11	-	PN3
EN	SERIES						
5	FUNCTION 5 = 5/2 6 = 5/3 Centre Closed 7 = 5/3 Centre Open 8 = 5/3 Pressure Centre						
3	SIZE 3 = 16 5 = 19						
0	BODY TYPE: 0 = body for sub-base						
11	ACTUATION 11 = Electro-pneumatic, bistable 16 = Electro-pneumatic, monostable 33 = Pneumatic bistable 36 = Pneumatic monostable E11 = Electro-pneumatic, bistable with external servo-pilot supply E16 = Electro-pneumatic, monostable with external servo-pilot supply						
PN3	TYPE OF SOLENOID PN3 = 24V DC - 1W P13 = 24V DC - 1W PN4 = 48V DC - 2W PN6 = 110V DC - 2W PN7 = 230V - 2W P53 = 24V DC - 2W P54 = 48V DC - 2W P56 = 110V DC - 2W W53 = 24V DC - 2W W54 = 48V DC - 2W In case of applications with alternate current, use a bridge rectifier connector (see the connectors at the end of the section).						

VALVES AND SOLENOID VALVES

6

Monostable pneumatic valve with outlets on sub-base - size 16

5/2-way

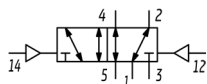


Mod.	Pilot supply	Min pilot pressure [bar]	Working pressure [bar]	Flow rate [NL/min]
EN530-36	M5	2,5	2,5 ÷ 10	610

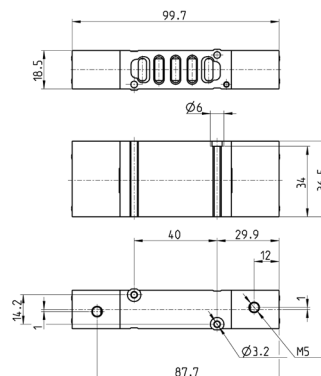
VALVES AND SOLENOID VALVES
SERIES EN - DIMENSIONS

Pneumatic valve, bistable with outlets on sub-base - size 19

5/2-way



VP06

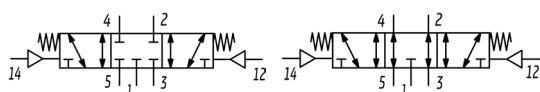


Mod.	Pilot supply	Min pilot pressure [bar]	Working pressure [bar]	Flow rate [NL/min]
EN550-33	M5	2	-0,9 ÷ 10	1000

Pneumatically actuated valve with outlets on sub-base - size 19

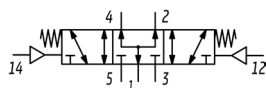
5/3-way

CC = Centres Closed
CO = Centres Open
CP = Centres in Pressure

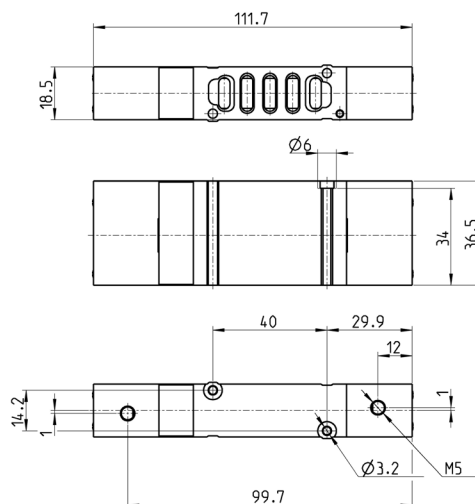


VP08

VP09



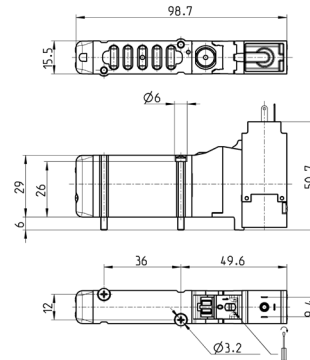
VP10



Mod.	Pilot supply	Min pilot pressure [bar]	Working P. [bar]	Flow rate [NL/min]	Symbol
EN650-33	M5	3	-0,9 ÷ 10	1000	VP08
EN750-33	M5	3	-0,9 ÷ 10	1000	VP09
EN850-33	M5	3	-0,9 ÷ 10	1000	VP10

Electropneumatic valve, monostable with outlets on sub-base - s. 16

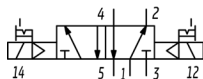
5/2-way



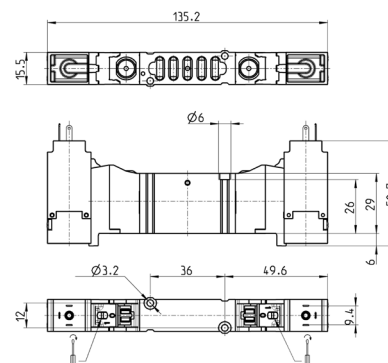
Mod.	Working pressure [bar]	Flow rate [NL/min]
EN530-16-PN..	2,5 ÷ 10	610

Electropneumatic valve, bistable with outlets on sub-base - size 16

5/2-way



EV23



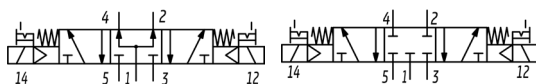
Mod.	Working pressure [bar]	Flow rate [NL/min]
EN530-11-PN..	2 ÷ 10	610

Electropneumatic valve with outlets on sub-base - size 16

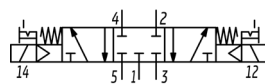
5/3-way



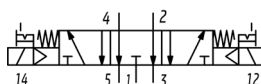
CC = Centres Closed
 CO = Centres Open
 CP = Centres in Pressure



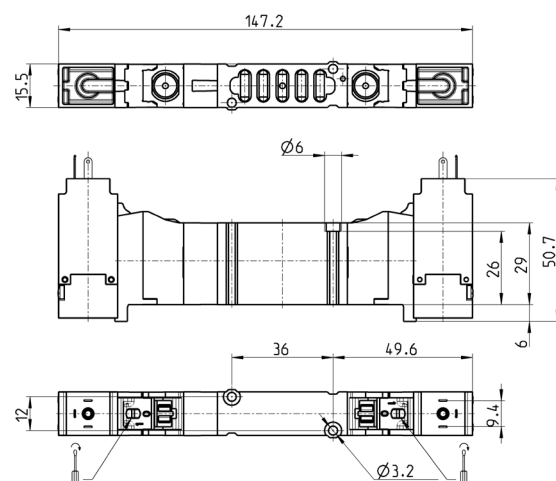
EV36



EV28



EV32

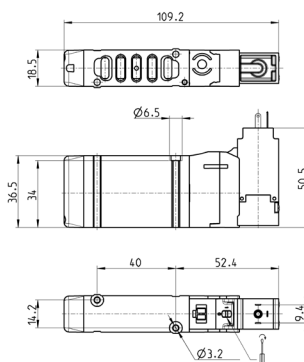


Mod.	Working pressure [bar]	Flow rate [NL/min]	Symbol
EN630-11-PN..	3 ÷ 10	610	EV28
EN730-11-PN..	3 ÷ 10	610	EV32
EN830-11-PN..	3 ÷ 10	610	EV36

VALVES AND SOLENOID VALVES
SERIES EN - DIMENSIONS

Electropneumatic valve, monostable with outlets on sub-base - s. 19

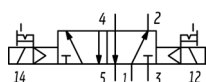
5/2-way



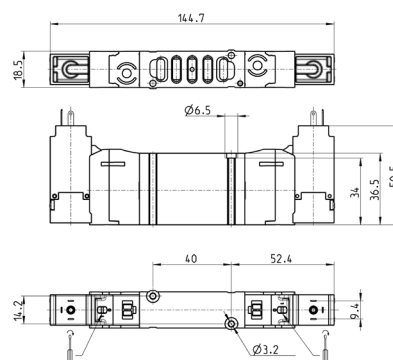
Mod.	Working pressure [bar]	Flow rate [NL/min]
EN550-16-PN..	2,5 ÷ 10	1000

Electropneumatic valve, bistable with outlets on sub-base - size 19

5/2-way



EV23



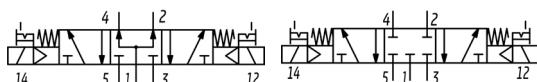
Mod.	Working pressure [bar]	Flow rate [NL/min]
EN550-11-PN..	2 ÷ 10	1000

Electropneumatic valve with outlets on sub-base - size 19

5/3-way

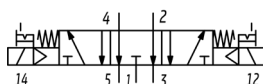


CC = Centres Closed
CO = Centres Open
CP = Centres in Pressure

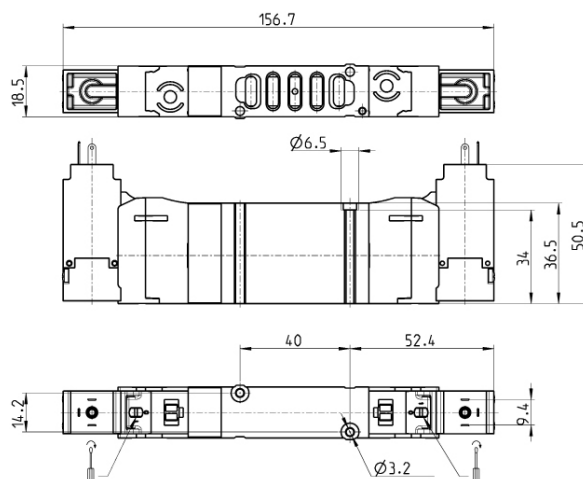


EV36

EV28



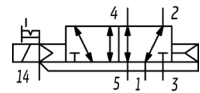
EV32



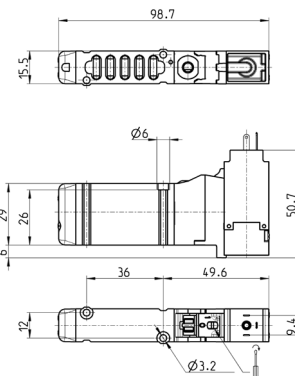
Mod.	Working pressure [bar]	Flow rate [NL/min]	Symbol
EN650-11-PN..	3 ÷ 10	1000	EV28
EN750-11-PN..	3 ÷ 10	1000	EV32
EN850-11-PN..	3 ÷ 10	1000	EV36

Electro-pn. monost. valve, ext. pilot supply, outlets on sub-base - s. 16

5/2-way



EV22



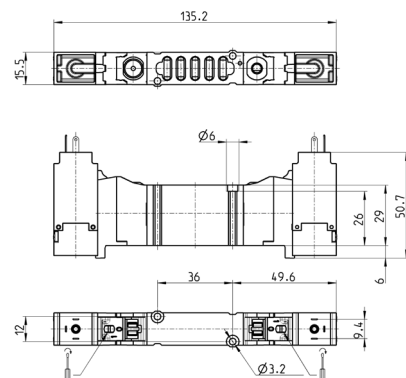
Mod.	Pilot supply pressure [bar]	Operating pressure [bar]	Flow [NL/min]
EN530-E16-PN..	2,5 ÷ 10	- 0,9 ÷ 10	610

Electro-pn. bistable valve, ext. pilot supply, outlets on sub-base - s. 16

5/2-way



EV26



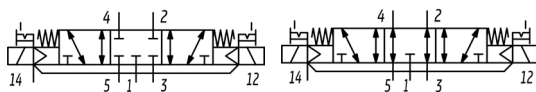
Mod.	Pilot supply pressure [bar]	Operating pressure [bar]	Flow [NL/min]
EN530-E11-PN..	2 ÷ 10	-0,9 ÷ 10	610

Electro-pneumatic valve, ext. pilot supply, outlets on sub-base - s. 16

5/3-way



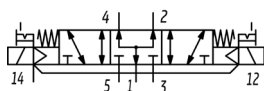
CC = Centres Closed
 CO = Centres Open
 CP = Centres in Pressure



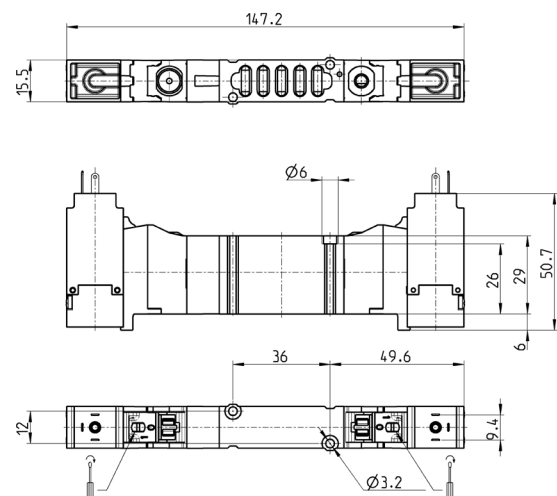
EV30



EV33



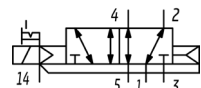
EV38



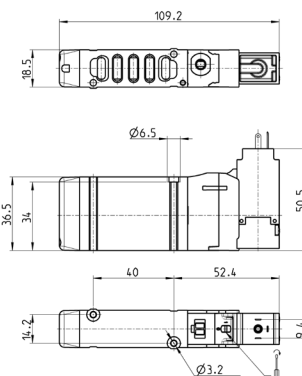
Mod.	Pilot supply pressure [bar]	Operating pressure [bar]	Flow [NL/min]	Symbol
EN630-E11-PN..	3 ÷ 10	-0,9 ÷ 10	610	EV30
EN730-E11-PN..	3 ÷ 10	-0,9 ÷ 10	610	EV33
EN830-E11-PN..	3 ÷ 10	-0,9 ÷ 10	610	EV38

Electro-pn. monost. valve, ext. pilot supply, outlets on sub-base - s. 19

5/2-way



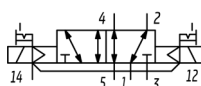
EV22



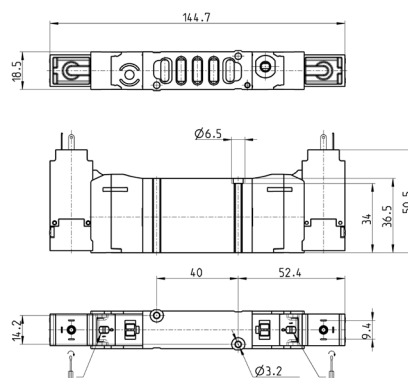
Mod.	Pilot supply pressure [bar]	Operating pressure [bar]	Flow [NL/min]
EN550-E16-PN..	2,5 ÷ 10	- 0,9 ÷ 10	1000

Electro-pn. bistable valve, ext. pilot supply, outlets on sub-base - s. 19

5/2-way



EV26



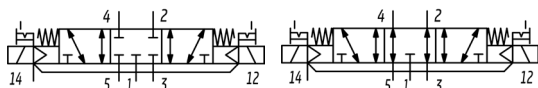
Mod.	Pilot supply pressure [bar]	Operating pressure [bar]	Flow [NL/min]
EN550-E11-PN..	2 ÷ 10	-0,9 ÷ 10	1000

Electro-pneumatic valve, ext. pilot supply, outlets on sub-base - s. 19

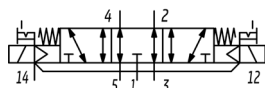
5/3-way



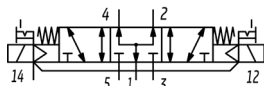
CC = Centres Closed
CO = Centres Open
CP = Centres in Pressure



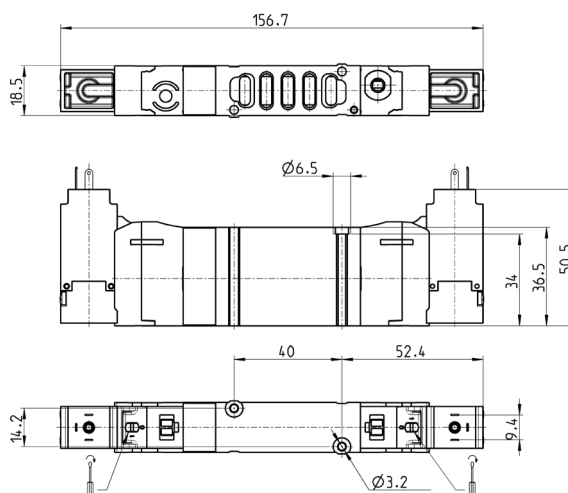
EV30



EV33



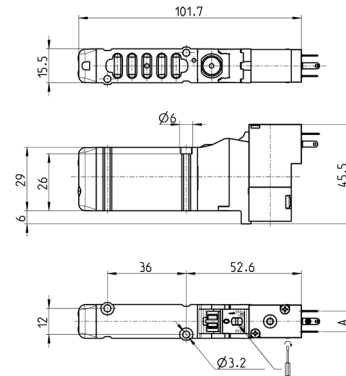
EV38



Mod.	Pilot supply pressure [bar]	Operating pressure [bar]	Flow [NL/min]	Symbol
EN650-E11-PN..	3 ÷ 10	-0,9 ÷ 10	1000	EV30
EN750-E11-PN..	3 ÷ 10	-0,9 ÷ 10	1000	EV33
EN850-E11-PN..	3 ÷ 10	-0,9 ÷ 10	1000	EV38

Electro-pn. monostable valve, sol. P / W, outlets on sub-base - s. 16

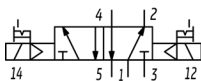
5/2-way



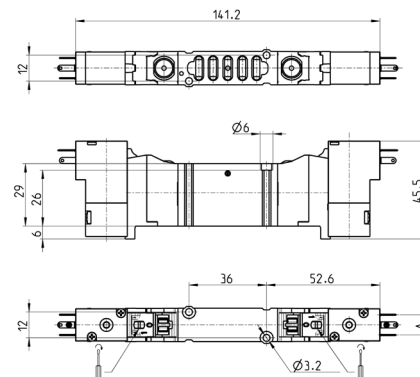
Mod.	A	Operating pressure [bar]	Flow [NI/min]
EN530-16-P13	9,4	2,5 ÷ 10	610
EN530-16-P54	9,4	2,5 ÷ 10	610
EN530-16-P56	9,4	2,5 ÷ 10	610
EN530-16-W53	8	2,5 ÷ 10	610
EN530-16-W54	8	2,5 ÷ 10	610

Electro-pn. bistable valve, sol. P / W, outlets on sub-base - size 16

5/2-way



EV23



Mod.	A	Operating pressure [bar]	Flow [NI/min]
EN530-11-P13	9,4	2 ÷ 10	610
EN530-11-P54	9,4	2 ÷ 10	610
EN530-11-P56	9,4	2 ÷ 10	610
EN530-11-W53	8	2 ÷ 10	610
EN530-11-W54	8	2 ÷ 10	610

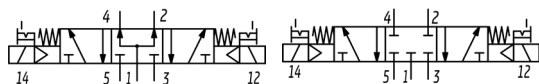
VALVES AND SOLENOID VALVES
SERIES EN - DIMENSIONS

Electro-pneumatic valve, sol. P / W, outlets on sub-base - size 16

5/3-way

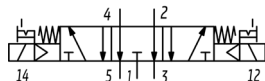


CC = Centres Closed
CO = Centres Open
CP = Centres in Pressure

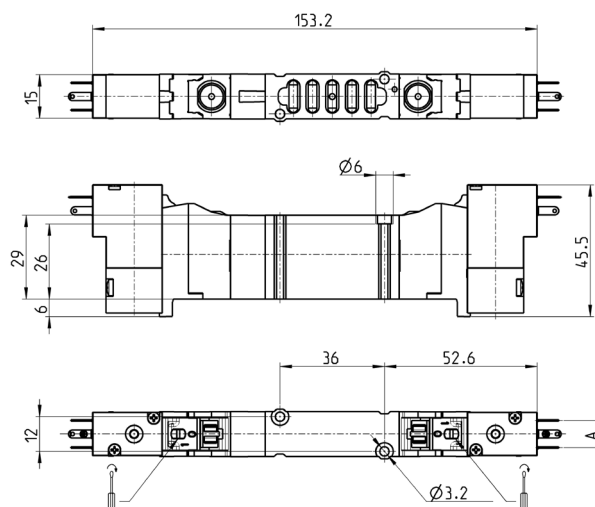


EV36

EV28



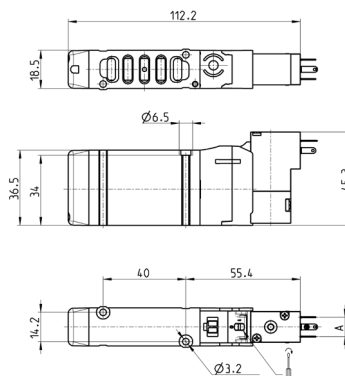
EV32



Mod.	A	Operating pressure [bar]	Flow [NL/min]	Symbol
EN630-11-P..	9,4	3 ÷ 10	610	EV28
EN730-11-P..	9,4	3 ÷ 10	610	EV32
EN830-11-P..	9,4	3 ÷ 10	610	EV36
EN630-11-W..	8	3 ÷ 10	610	EV28
EN730-11-W..	8	3 ÷ 10	610	EV32
EN830-11-W..	8	3 ÷ 10	610	EV36

Electro-pn. monostable valve, sol. P / W, outlets on sub-base - s. 19

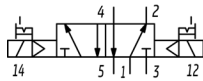
5/2-way



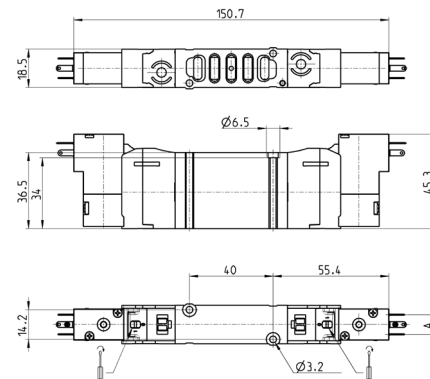
Mod.	Operating pressure [bar]	Flow [NL/min]
EN550-16-P13	2,5 ÷ 10	1000
EN550-16-P54	2,5 ÷ 10	1000
EN550-16-P56	2,5 ÷ 10	1000
EN550-16-W53	2,5 ÷ 10	1000
EN550-16-W54	2,5 ÷ 10	1000

Electro-pn. bistable valve, sol. P / W, outlets on sub-base - size 19

5/2-way



EV23



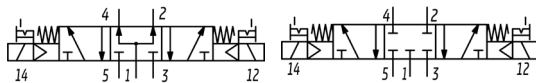
Mod.	A	Operating pressure [bar]	Flow [l/min]
EN550-11-P13	9,4	2 ÷ 10	1000
EN550-11-P54	9,4	2 ÷ 10	1000
EN550-11-P56	9,4	2 ÷ 10	1000
EN550-11-W53	8	2 ÷ 10	1000
EN550-11-W54	8	2 ÷ 10	1000

Electro-pneumatic valve, sol. P / W, outlets on sub-base - size 19

5/3-way

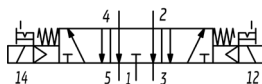


CC = Centres Closed
 CO = Centres Open
 CP = Centres in Pressure

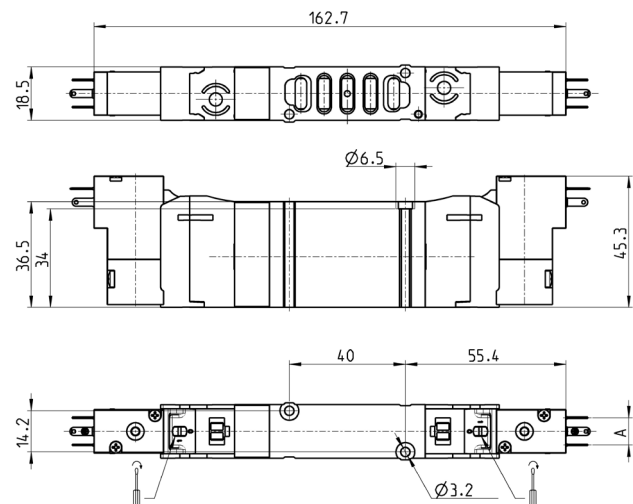


EV36

EV28



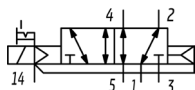
EV32



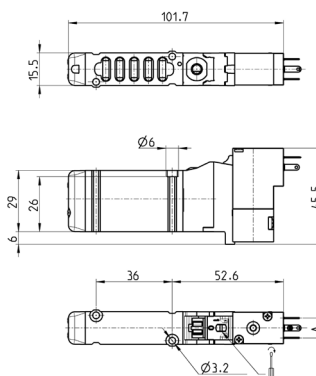
Mod.	A	Operating pressure [bar]	Flow [l/min]	Symbol
EN650-11-P..	9,4	3 ÷ 10	1000	EV28
EN750-11-P..	9,4	3 ÷ 10	1000	EV32
EN850-11-P..	9,4	3 ÷ 10	1000	EV36
EN650-11-W..	8	3 ÷ 10	1000	EV28
EN750-11-W..	8	3 ÷ 10	1000	EV32
EN850-11-W..	8	3 ÷ 10	1000	EV36

Electro-pn. mono. valve, pilot sup. sol. P / W, outlets on base - s. 16

5/2-way



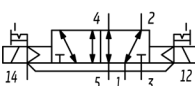
EV22



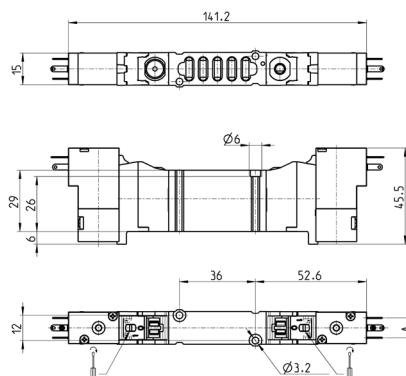
Mod.	A	Pilot supply pressure [bar]	Operating pressure [bar]	Flow [NL/min]
EN530-E16-P..	9,4	2,5 ÷ 10	-0,9 ÷ 10	610
EN530-E16-W..	8	2,5 ÷ 10	-0,9 ÷ 10	610

Electro-pn. bistab. valve, pilot sup. sol. P / W, outlets on base - s. 16

5/2-way



EV26



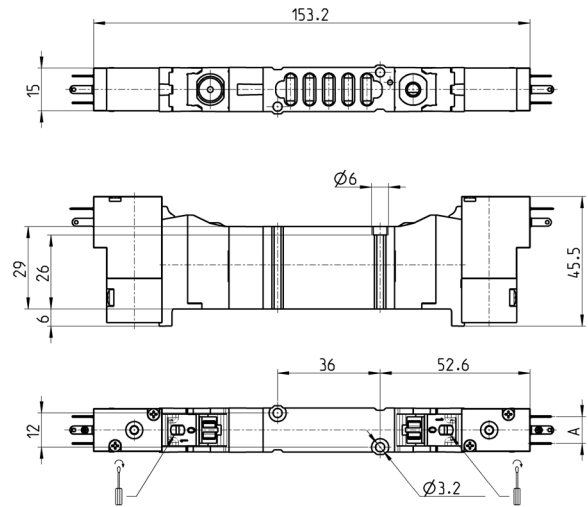
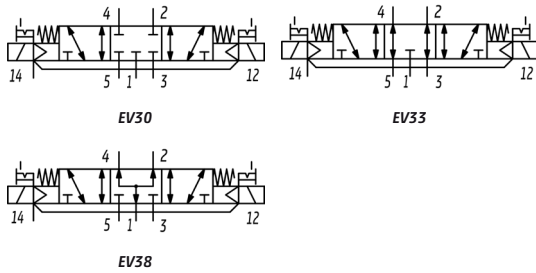
Mod.	A	Pilot supply pressure [bar]	Operating pressure [bar]	Flow [NL/min]
EN530-E11-P..	9,4	2 ÷ 10	-0,9 ÷ 10	610
EN530-E11-W..	8	2 ÷ 10	-0,9 ÷ 10	610

Electro-pneum. valve, pilot sup. sol. P / W, outlets on base - s. 16

5/3-way



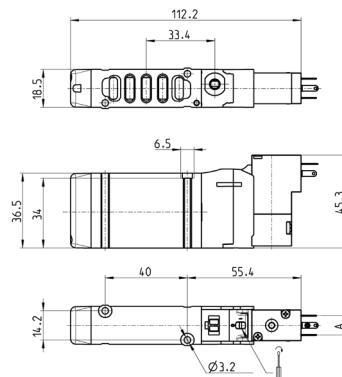
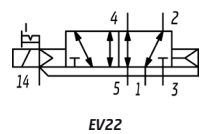
CC = Centres Closed
 CO = Centres Open
 CP = Centres in Pressure



Mod.	A	Pilot supply pressure [bar]	Operating pressure [bar]	Flow [NL/min]	Symbol
EN630-E11-P..	9,4	3 ÷ 10	-0,9 ÷ 10	610	EV30
EN730-E11-P..	9,4	3 ÷ 10	-0,9 ÷ 10	610	EV33
EN830-E11-P..	9,4	3 ÷ 10	-0,9 ÷ 10	610	EV38
EN630-E11-W..	8	3 ÷ 10	-0,9 ÷ 10	610	EV30
EN730-E11-W..	8	3 ÷ 10	-0,9 ÷ 10	610	EV33
EN830-E11-W..	8	3 ÷ 10	-0,9 ÷ 10	610	EV38

Electro-pn. mono. valve, pilot sup. sol. P / W, outlets on base - s. 19

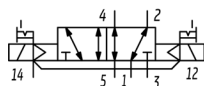
5/2-way



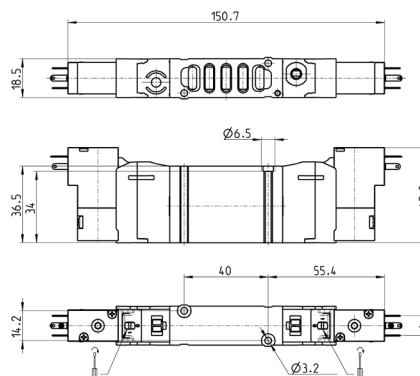
Mod.	A	Pilot supply pressure [bar]	Operating pressure [bar]	Flow [NL/min]
EN550-E16-P..	9,4	2,5 ÷ 10	-0,9 ÷ 10	1000
EN550-E16-W..	8	2,5 ÷ 10	-0,9 ÷ 10	1000

Electro-pn. bistab. valve, pilot sup. sol. P / W, outlets on base - s. 19

5/2-way



EV26

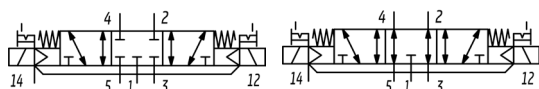


Mod.	A	Pilot supply pressure [bar]	Operating pressure [bar]	Flow [NL/min]
EN550-E11-P..	9,4	2 ÷ 10	-0,9 ÷ 10	1000
EN550-E11-W..	8	2 ÷ 10	-0,9 ÷ 10	1000

Electro-pneum. valve, pilot sup. sol. P / W, outlets on base - s. 19

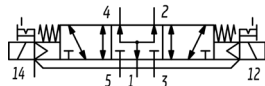
5/3-way

CC = Centres Closed
CO = Centres Open
CP = Centres in Pressure

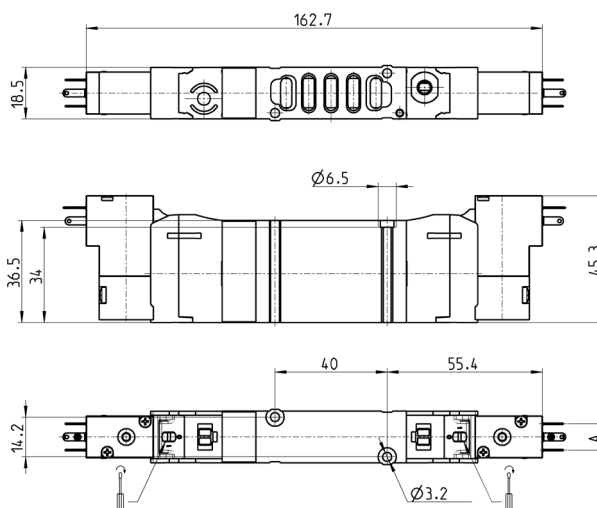


EV30

EV33



EV38

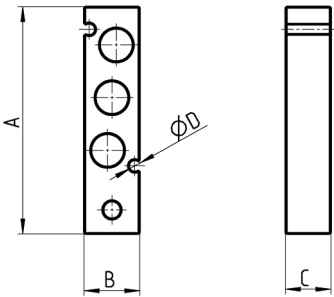


Mod.	A	Pilot supply pressure [bar]	Operating pressure [bar]	Flow [NL/min]	Symbol
EN650-E11-P..	9,4	3 ÷ 10	-0,9 ÷ 10	1000	EV30
EN750-E11-P..	9,4	3 ÷ 10	-0,9 ÷ 10	1000	EV33
EN850-E11-P..	9,4	3 ÷ 10	-0,9 ÷ 10	1000	EV38
EN650-E11-W..	8	3 ÷ 10	-0,9 ÷ 10	1000	EV30
EN750-E11-W..	8	3 ÷ 10	-0,9 ÷ 10	1000	EV33
EN850-E11-W..	8	3 ÷ 10	-0,9 ÷ 10	1000	EV38

Blanking plate for manifolds - valves with outlets on the body



The following is supplied:
1x blanking plate
2x screws
1x seal

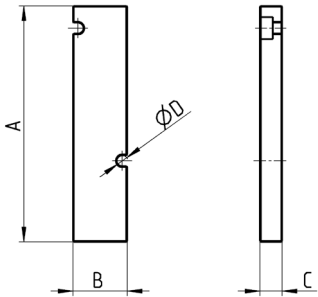


Mod.	Size	A	B	C	ØD
TP-EN531	16	60	14,5	12	3,2
TP-EN551	19	62	17,3	12	3,2

Blanking plate for manifolds - base mounted valves



The following is supplied:
1x blanking plate
2x screws
1x seal



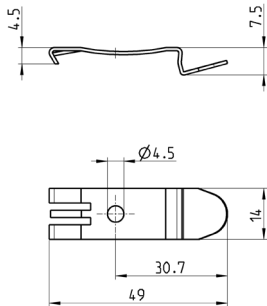
Mod.	Size	A	B	C	ØD
TP-EN530	16	64	14,7	6	3,2
TP-EN550	19	64	17	6	3,2

Mounting brackets for DIN rail



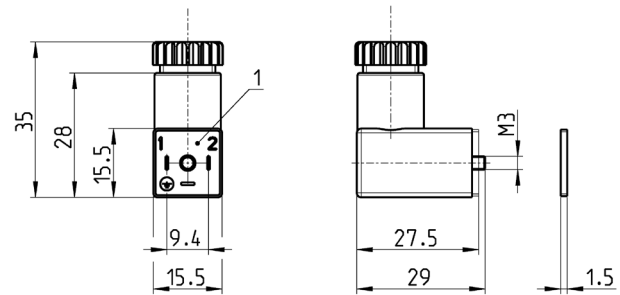
DIN EN 50022 (7,5mm x 35mm - width 1)
Suitable for all manifolds.

Supplied with:
2x plates
2x screws M4x6 UNI 5931
2x nuts



Mod.
PCF-EN531

Connectors Mod. 125 industrial std. 9,4 mm



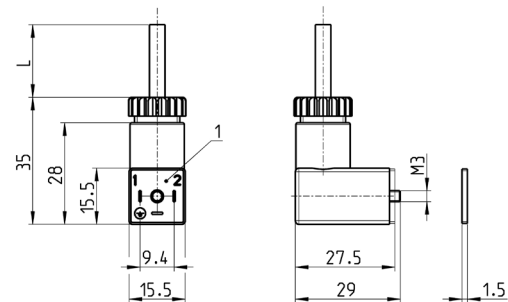
1 = 90° adjustable connector

Mod.	Description	Colour	Working voltage	Cable gland	Tightening torque
125-601	Connector, diode + Led	Transparent	10/50 V DC	PG7	0,3 Nm
125-701	Connector, varistor + Led	Transparent	24 V AC/DC	PG7	0,3 Nm
125-800	Connector, without electronics	Black	-	PG7	0,3 Nm

Connectors Mod. 125 industrial std. 9,4 mm with cable



DIN EN 175 301-803-C
 The internal rectifier circuit of the connector Mod. 125-900 allows to use solenoid valves with different AC voltage, even if the voltage indicated on the solenoid valve is DC.



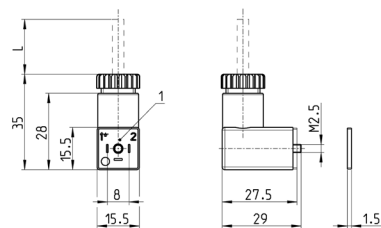
1 = 90° adjustable connector

Mod.	Description	Colour	Working voltage	Cable length (L)	Cable gland	Tightening torque
125-501-2	moulded cable with diode + Led	black	10/50 V DC	2000 mm	-	0,3 Nm
125-550-1	moulded cable, without electronics	black	-	1000 mm	-	0,3 Nm
125-601-2	pre-wired cable, diode + Led	transparent	10/50 V DC	2000 mm	PG7	0,3 Nm
125-571-3	moulded cable, varistor + Led	black	24 V AC/DC	3000 mm	-	0,3 Nm
125-900	pre-wired cable with voltage rectifier	black	6 V - 110 V AC/DC	2000 mm	PG7	0,3 Nm

Connectors Mod. 126 industrial std. 8 mm



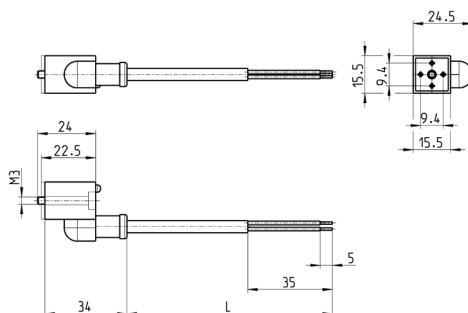
DIN EN 175 301-803-c



1 = 90° adjustable connector

Mod.	Description	Colour	Working voltage	Cable length (L)	Cable gland	Tightening torque
126-550-1	moulded cable, without electronics	black	-	1000 mm	-	0.3 Nm
126-800	connector, without electronics	black	-	-	PG7	0.3 Nm
126-701	connector, varistor + Led	transparent	24 VAC/DC	-	PG7	0.3 Nm

Connectors Mod. 125 industrial std. 9,4 mm in-line cable

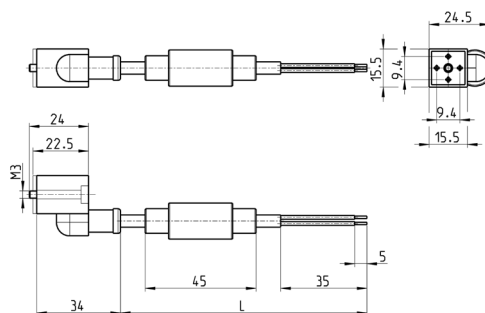


Mod.	Description	Colour	Working voltage	Cable length (L)	Cable gland	Tightening torque
125-503-2	In-line moulded cable, with diode + Led	Black	24 V DC	2000 mm	-	0,3 Nm
125-503-5	In-line moulded cable, with diode + Led	Black	24 V DC	5000 mm	-	0,3 Nm
125-553-2	In-line moulded cable, without electronics	Black	-	2000 mm	-	0,3 Nm
125-553-5	In-line moulded cable, without electronics	Black	-	5000 mm	-	0,3 Nm

Connectors Mod. 125 industrial std. 9.4 mm in-line cable and rectifier



DIN EN 175 301-803-C



Mod.	Description	Colour	Working voltage	Cable length (L)	Cable gland	Tightening torque
125-903-2	in-line moulded cable with voltage rectifier	black	6 V - 230 VAC/DC	2000 mm	-	0,3 Nm
125-903-5	in-line moulded cable with voltage rectifier	black	6 V - 230 VAC/DC	5000 mm	-	0,3 Nm