

BBS35U5 Charger

The BBS35U5 USB charging case is designed to provide charging capabilities for smartphones, tablets, and other devices requiring USB-A and Type-C connections. It delivers a constant power output of up to 10W. With its compact size and aesthetically pleasing design, it offers two installation methods and delivers an excellent user experience in various scenarios such as hospitals, nursing homes, and home care.



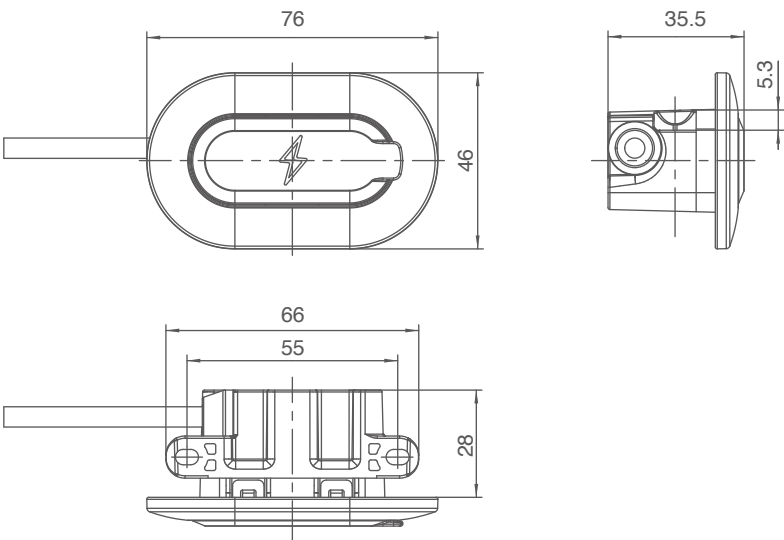
Features And Options

Dual Charging Ports:	USB-A and Type-C
Colour Options:	Grey (RAL7035) or Black
Control Box Compatibility:	It can be matched with BIBUS common controller
Silicone Cover Color:	Customizable
Protection Class:	Max. IPX6 (when not charging)
Mounting Options:	Embedded or side-mounted
Dimensions:	76 × 46 × 35.5 mm
Cable Length:	1500 mm
Approval:	IEC60601-1 and IEC60601-1-2

Usage

USB-A Port Output:	Max 5V 2A/1.5A
Type-C Port Output:	Max 5V 2A/1.5A
Simultaneous Charging Output:	5V/1A (both ports in use)
Operating Temperature:	+5°C to +40°C
Storage Temperature:	-10°C to +50°C
Relative Humidity:	20% to 80% (non-condensing)
Atmospheric Pressure:	860 to 1060 hPa
Altitude:	Up to 2000m

Dimensions



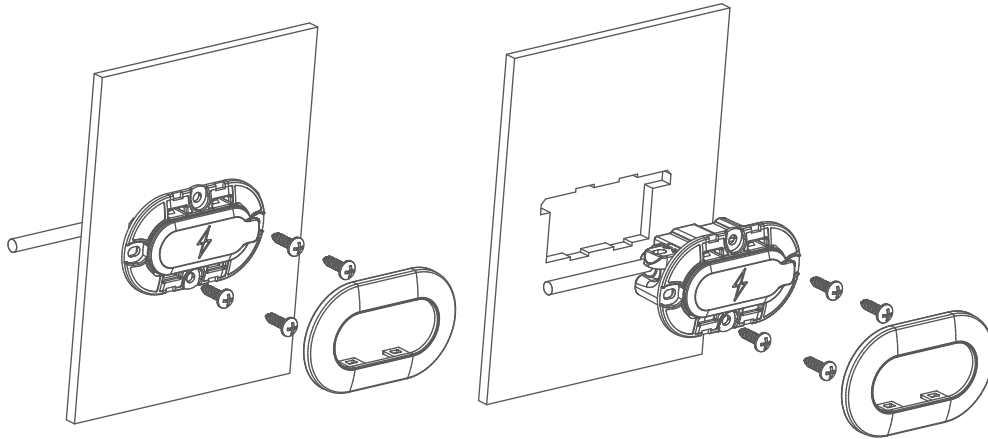
Ordering Key

Take **CP35U5G/B5/65V/2AC01FSG4AU16CU1D501** as an example

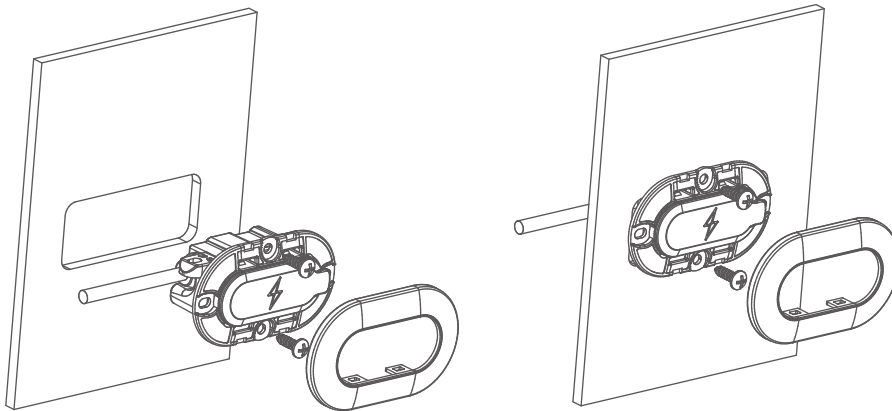
Model	BBS35U5	BBS35U5 Charger
Colour	X	G= Grey (RAL7035) / B = Black
Input Voltage	X	5/6=Input voltage 24-36VDC
Output Voltage/Current	XXX/XXX	5V/2A=5V/2A (under single output)
Input Interface	XXX/XXX	C01FSG=Water-proof Din 41529 Speaker connector C01FSW=Water-proof Din 41529 Speaker elbow connector (10)H1=10-pin water-proof RJ elbow connector
Output Interface	XXX	4AU/16CU=4AU/16CU
Cable Length	X	1D5=1.5m
Counter	XX	01

Installation Methods

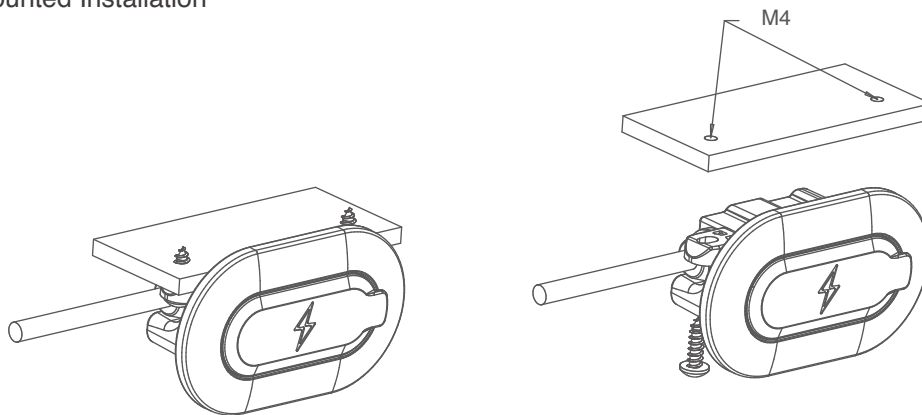
1. Embedded Installation: Using 4 mounting points for irregular mounting plate



2. Embedded Installation: Using 2 Upper/Lower mounting points for square mounting plate

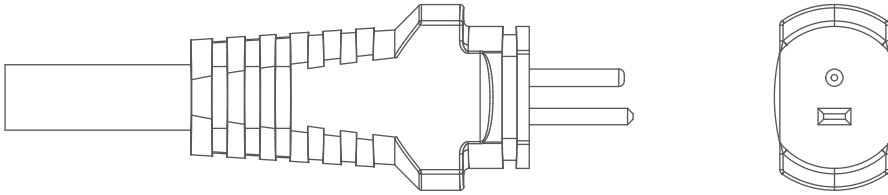


3. Side-mounted Installation

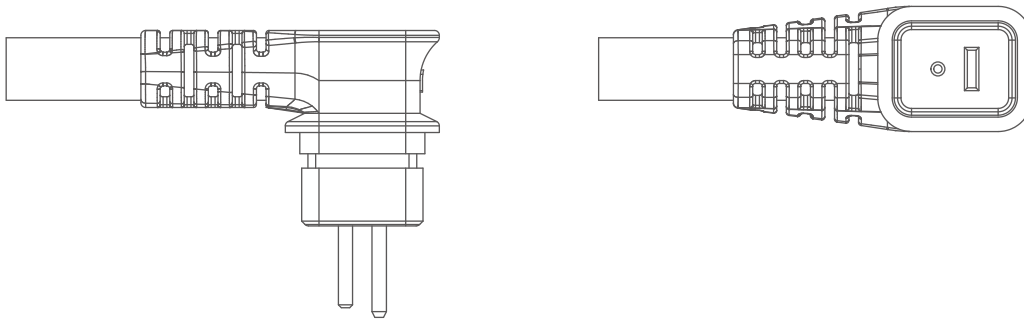


Connector Codes

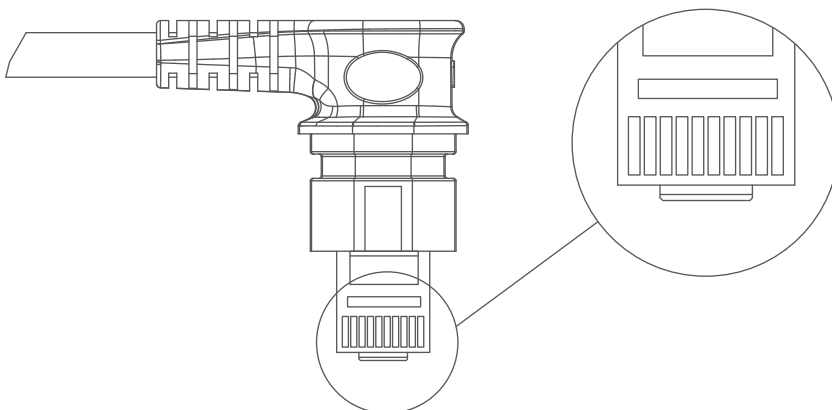
Water-proof Din 41529 Speaker connector: 1FSG, straight cable (matching with BIBUS control box)



Water-proof Din 41529 Speaker elbow connector: C01FSWC, straight cable (matching with BIBUS control box)



10-pin water-proof RJ elbow connector: (10)H1, straight cable (matching with BIBUS control box and connection box)





Strictly abiding by medical safety certifications

Passed EMC tests. To ensure our products pass all kinds of tests domestic or abroad.



Communication protocol development

Aiming at different applications, develop more extensive functions for control system.



Professional customization

Powerful R&D strength, fully satisfy customers' needs. Development cycle is about 10 days, seizing more market opportunities



Intelligent Control of Bluetooth

Mobile phone as the remote, applying in home care. Market pioneer, BIBUS provides better choices



Wireless Communication

Controllers adopt high-frequency wireless system. It can avoid interference mixing with signal receivers, assisting in remote control over medical equipment.



Latest Weighing System

Designed for physiotherapy beds and medical care beds. Cantilever carrying weighing sensor, it is applicable to different bedsteads dispensing with any adjustment

Disclaimer and Exclusion of Liability

The user must determine the suitability of BIBUS products under specific conditions. BIBUS is committed to providing the latest product information. However, as BIBUS's products are constantly improving, it is possible to make changes to BIBUS's products without prior notice. Therefore, BIBUS cannot guarantee the correctness and authenticity of the product information. Although BIBUS will do its best to meet the order requirements, due to the above reasons, BIBUS cannot guarantee the delivery capacity of any specific product.

Therefore, BIBUS reserves the right to stop selling any products listed on the website or product catalog or other BIBUS written materials. All sales activities must be carried out in accordance with the requirements of BIBUS sales and Delivery Standard Clauses. For copies of relevant documents, please contact BIBUS.



Notes for mounting and usage can be found in the corresponding mounting manual