

VJ X-ray A VJ Technologies Company	DWG NUMBER: SPC – P532 SHT 1 OF 10	REV: 1
---	---	--------

FILES ASSOCIATED WITH THIS SPECIFICATION

FILENAME	CONTENTS
SPC – P532.doc	This Document

CHANGE HISTORY

ORIGINATOR	DATE	DESCRIPTION OF CHANGE
J. Zhou	11/27/19	Standard specification for IXS with metal ceramic tube rated for 180kV. <ul style="list-style-type: none"> - Input power: 220VAC \pm10% - 90-180kV, 1-13.3mA, 2394W max - Fan beam 102 x 10 degree - X-ray Tube Focal spot size: 2.3 x 2.7 per EN12543 - Output Rise time: 2sec - Integrated external water-air cooler - Firmware P273 - Communication: RS232 & Ethernet - Cable length (HV tank – Control): 1.0meter
K. Gupta	8/2/21	Rev 1: <ul style="list-style-type: none"> - Changed input power connected to cooler from 4A to 6A - Changed figure 5 (system diagram) to same as figure 5 from P525 - Changed typical external circuit diagram to same diagram from P525 - Correction, Section 6g: From 1A to \leq200mA
C . Sun	3/16/23	Rev1: <ul style="list-style-type: none"> - Update ZS3000-221 drawing - Update HVG type indicator color

TITLE: IXS180SE2k4P532	
GENERATED BY: Joseph Zhou	DOC OWNER: X-ray Eng. & Sales
REVIEWED BY: Joseph Zhou	REVIEW DATE: 8/2/21
APPROVED BY: NY Eng. Team	APPROVAL DATE: 8/6/21

VJ X-Ray A VJ Technologies Company	DWG NUMBER: SPC – P532 SHT 2 OF 10	REV: 1
---	---------------------------------------	--------

CONTENTS

1. OVERVIEW	3
2. INPUT POWER	3
3. HIGH VOLTAGE PERFORMANCE	3
4. TUBE CURRENT (MA) PERFORMANCE	3
5. BEAM GEOMETRY	4
6. PROTECTION AND SAFETY CIRCUITRY	4
7. SAFETY REQUIREMENTS	4
8. X-RAY TUBE SPECIFICATION	5
9. PHYSICAL SPECIFICATIONS	5
10. AC POWER INPUT CONNECTOR	5
11. LED INDICATORS	5
12. CONNECTORS	5
13. CABLES	7
14. DIGITAL INTERFACE	7
15. MECHANICAL DRAWINGS	8
16. TYPICAL EXTERNAL CIRCUITS	10

VJ X-Ray A VJ Technologies Company	DWG NUMBER: SPC – P532 SHT 3 OF 10	REV: 1
---	---------------------------------------	--------

1. OVERVIEW

The IXS180SE2K4P532 X-ray Generator is a 180kV, 13.3mA High Frequency X-Ray generator. It consists of an integrated Metal Ceramic X-ray tube, a high voltage power supply and a filament supply. It features an integrated water-air heat exchanger. The Generator is controlled, programmed and monitored via RS232 and Ethernet interface. This product is suitable for operating in stationary mode or rotating mode. The Generator is built in accordance to the following specifications.

2. INPUT POWER

220VAC +/-10%, 50/60Hz. Single phase. 16Amps RMS max.
 24VDC @ 1A to be connected to control box
 24VDC @ 6A to be connected to Cooler

3. HIGH VOLTAGE PERFORMANCE

- a. **Output Power:**
Normal operating output power: 180kV, 13.3mA, 2394W max.
- b. **Tube Voltage Operational Range:**
The high voltage is programmed within the normal operating range of 90 to 180 kV.
- c. **kV Accuracy:**
The High Voltage measured at the X-ray tube is within $\pm 1\%$ of the selected value.
- d. **X-ray Output Ripple:**
 $\pm 0.5\%$ at Frequency less than 240Hz
- e. **kV Regulation:**
< 0.1% for combined line and load changes over 1-13.3mA
- f. **kV Rise Time:**
The kV rise time: ~ 2sec from 0kV to nominal kV
- g. **kV Overshoot**
The kV Overshoot will be $\leq 5\%$ of full output voltage.
- h. **Duty Cycle**
Continuous

4. TUBE CURRENT (mA) PERFORMANCE

- a. **Tube current Operational Range:**
1 – 13.3mA @ 180kV max.
- b. **mA Accuracy:**
The X-ray tube current is within $\pm 0.5\%$ of the selected value.
- c. **mA Regulation:**
< 0.5% for combined line and load changes from 90-180kV

VJ X-Ray A VJ Technologies Company	DWG NUMBER: SPC – P532 SHT 4 OF 10	REV: 1
---	---------------------------------------	--------

- d. **mA Rise Time at maximum power:**
~2sec from 0% to 100% of the output current.

5. BEAM GEOMETRY

- a. **Fan beam** 102° x 10°

6. PROTECTION AND SAFETY CIRCUITRY

- a. **Over-current protection:**
The Over-current trip point is set for within 105% - 110% of max mA. This will disable the high voltage output. A Reset is required to clear this fault.
- b. **Over voltage protection:**
The Over voltage trip point is set within 105% - 110% of max kV. This will disable the high voltage output. A Reset is required to clear this fault.
- c. **Over temperature protection:**
Over temperature trip point is set within 57°C to 63°C. This will disable the high voltage output. A Reset is required to clear this fault.
- d. **Arc Detection Fault:**
When an Arc occurred, the arc fault LED will be ON. If four (4) or more arcs occurred within 10sec, the arc fault signal will be latched. This will disable the high voltage output & a reset is required to clear this fault.
- e. **Regulation Fault:**
When kV or mA output is out of regulation, the unit will disable the high voltage output. A Reset is required to clear this fault.
- f. **Power Limit Fault:**
When the kV/mA feedback values exceed the maximum rated power limit, this will disable the high voltage output. A Reset is required to clear this fault.
- g. **X-ray On Relay:**
The X-Ray on relay will operate when HV is enabled & there is no faults occurred.
The X-Ray on relay will de-energize when the X-Ray output is OFF.
The maximum rating of this contact is 30V DC@ 1Amp.
- h. **Safety Interlock:**
J2-1 & J2-2 to close through external interlock switches to satisfy the safety. X-Rays will not be produced & interlock open message will be displayed unless J2-1 & J2-2 are connected together through safety switches.

7. SAFETY REQUIREMENTS

- a. **Safety Compliance:** Designed to meet EN 61326-1 and UL 61010-1.
- b. **X-ray Leakage:** Less than 0.5mR/hour at 5cm from the surface of the chassis at full power.

VJ X-Ray A VJ Technologies Company	DWG NUMBER: SPC – P532 SHT 5 OF 10	REV: 1
---	---	--------

8. X-RAY TUBE SPECIFICATION

- a. Maximum Power: 180kV, 13.3mA, 2394W
- b. Focal Spot Size: 2.3mm (length) x 2.7mm (width) per EN12543
- c. Target Material: Tungsten

9. PHYSICAL SPECIFICATIONS

- a. **Environmental**
 - Operating ambient temperature within system: 0°C to 40°C
 - Storage ambient temperature: -20°C to +70°C
 - Thermal cut off: 60°C \pm 3°C of oil temperature
- b. **Humidity**
Operating Humidity: 10% - 85% non-condensing
- c. **Dimensions**
See figures in mechanical drawings
- d. **Weight**
X-ray generator: 57kg
Control box: 11kg
Cooler: 24kg
- e. **Cooling method**
 - Cooling of the generator is by an integrated external water-air cooler.
 - Cooling capability is 2394W continuously.

10. AC POWER INPUT CONNECTOR

- Voltage: 220 \pm 10% VAC, 50/60Hz
- Current: 16 Amps RMS max.

11. LED INDICATORS

X-ray On	Illuminated when Interlock is closed & HV is enabled
OV	Over Voltage Fault
OC	Over Current Fault
OP	Over Power Fault When Exceeds Rated Power
POWER	Illuminated when Power is present
REG-ERROR	Regulation Error
ARC	Arcing Fault
OT	Illuminated when oil temperature exceeds 60 \pm 3°C

12. CONNECTORS

J1 AC Input Connector: (AMP 556882-3)

VJ X-Ray A VJ Technologies Company	DWG NUMBER: SPC – P532	REV: 1
	SHT 6 OF 10	

L1	Neutral
G	Ground
L2	220+10%VAC Input

J2 Connector: Analog Interface (AMP 747238-6, 25 Pin Male)

Pin Out	Name
1	Interlock Out (15VDC)
2	Interlock In (15VDC)
3	Relay Contactor (+24V) IN
4	LED (24VDC) @ 100 mA max
5	LED (24VDC Return)
6	15V Gnd
7	15V Out
8	N/A
9	N/A
10	N/A
11	N/A
12	N/A
13	N/A
14	N/A
15	N/A
16	X-ray Pre-warning
17	N/A
18	N/A
19	N/A *
20	N/A
21	N/A
22	X-ray Pre-warning Return
23	N/A
24	N/A
25	N/A

Note: J2-19 can be used as “Cooler Fault” should the cooler status be monitored. It is not necessary in the current configuration as the Anode temperature is monitored directly by a temperature sensor.

J3 Connector: RS232 Digital Interface (9 Pin Female)

Pin Out	Name
1	N/A
2	TX- (Transmit)
3	RX+ (Receive)
4	N/A
5	Signal Ground
6	N/A
7	N/A
8	N/A
9	N/A

J4 Connector: 24VDC Input

Pin Out	Name
1	+24VDC @ 1A (Control Circuitry)
2	24VDC Return
3	+24VDC @ 6A (Cooler Pump and Fan)
4	24VDC Return

RJ45 Ethernet Digital Interface (USR-TCP232-T)

Pin Out	Name
1	TX+
2	TX-
3	RX+
4	N/A
5	N/A
6	RX-
7	Ground
8	Ground

13. CABLES

Cable Description	Cable Length (meter)
AC Power Cable	Connector & pins are provided.
Control Cable (Control – Tank)	1m
RS232 Signal Cable	1.5m standard
Ethernet Cable	2.1m standard
24V Power cable to Cooler	1m
AC Power Cable for Cooler (if applicable)	2m flywire
Cooler Signal Cable (Temp & Flow sensor if applicable)	1m
Cooler Hose	2m each max.

14. DIGITAL INTERFACE

Refer to Document P273-IXS-FIRMWARE-P273

15. MECHANICAL DRAWINGS

Figure 1: X-ray Generator

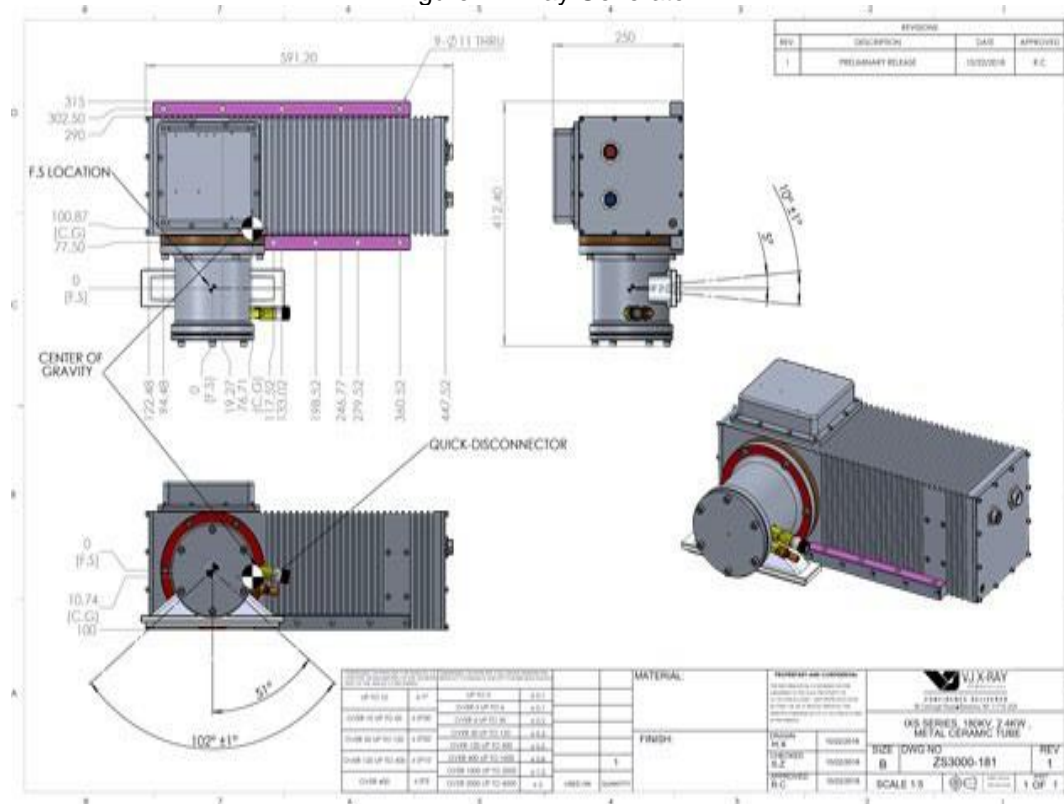


Figure 2: Control Box

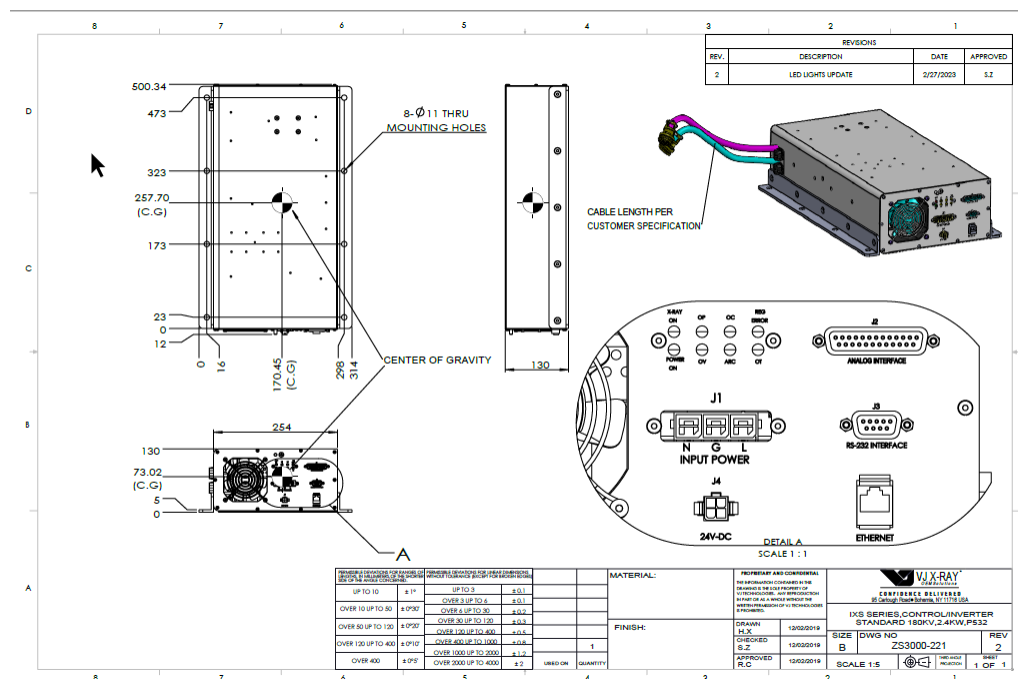


Figure 3: Cooler (for Reference)

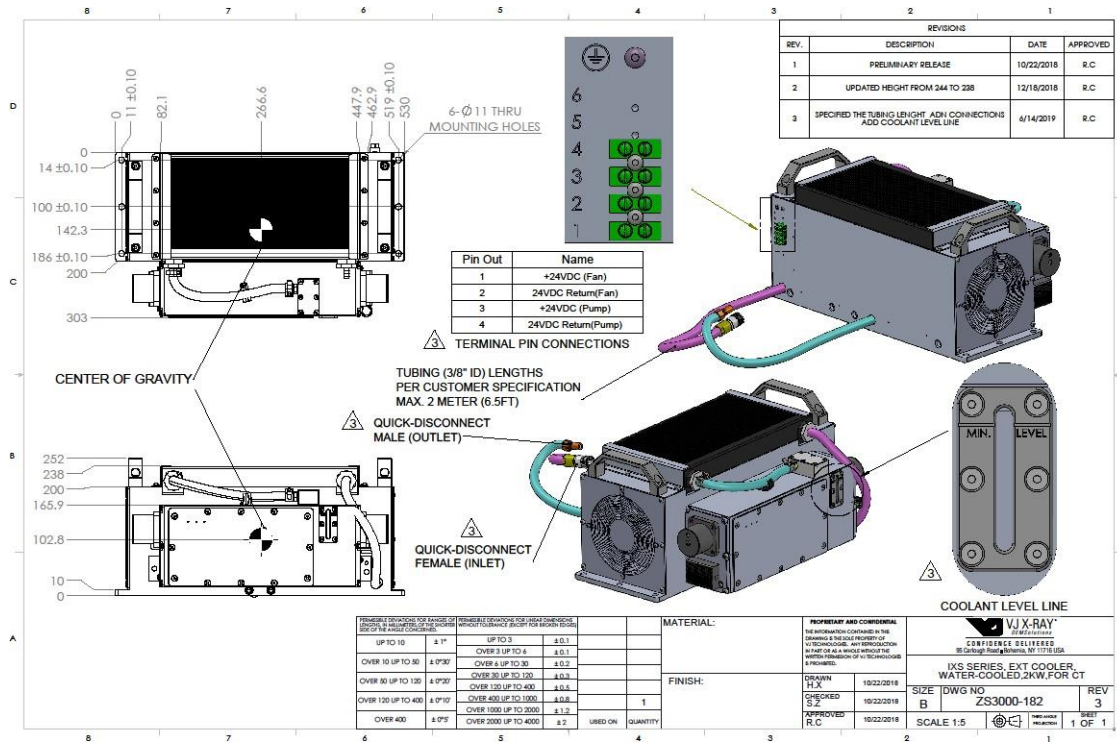


Figure 4: Panel

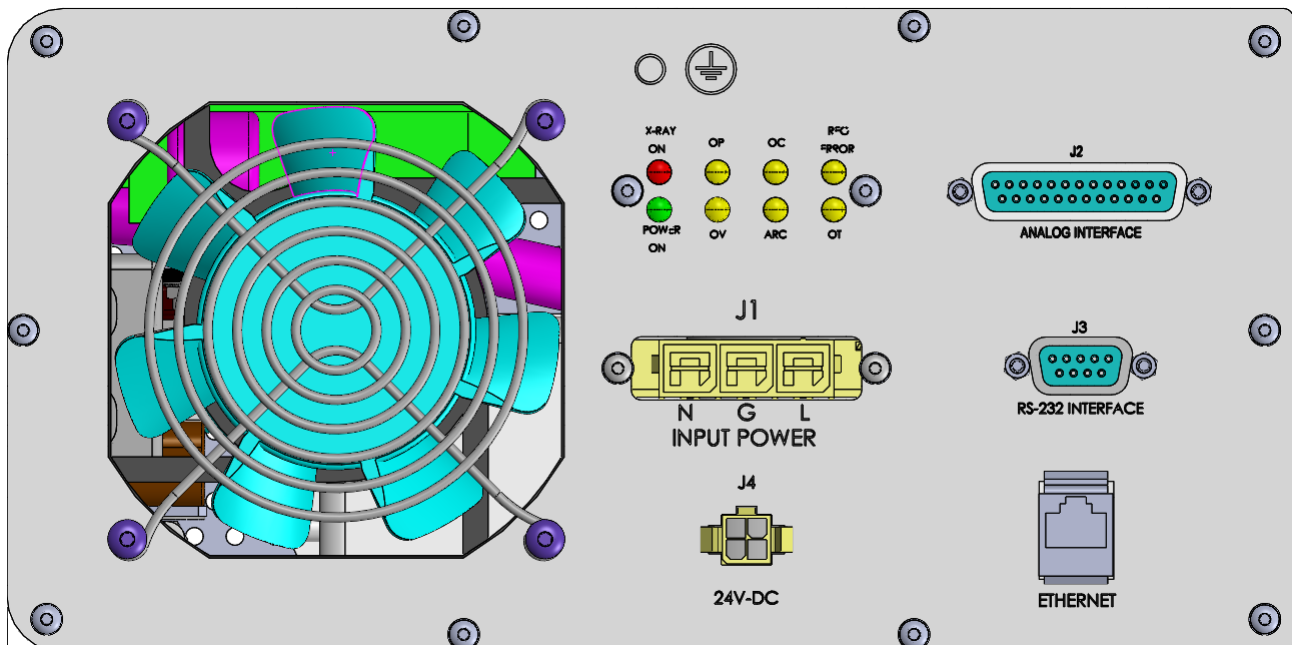
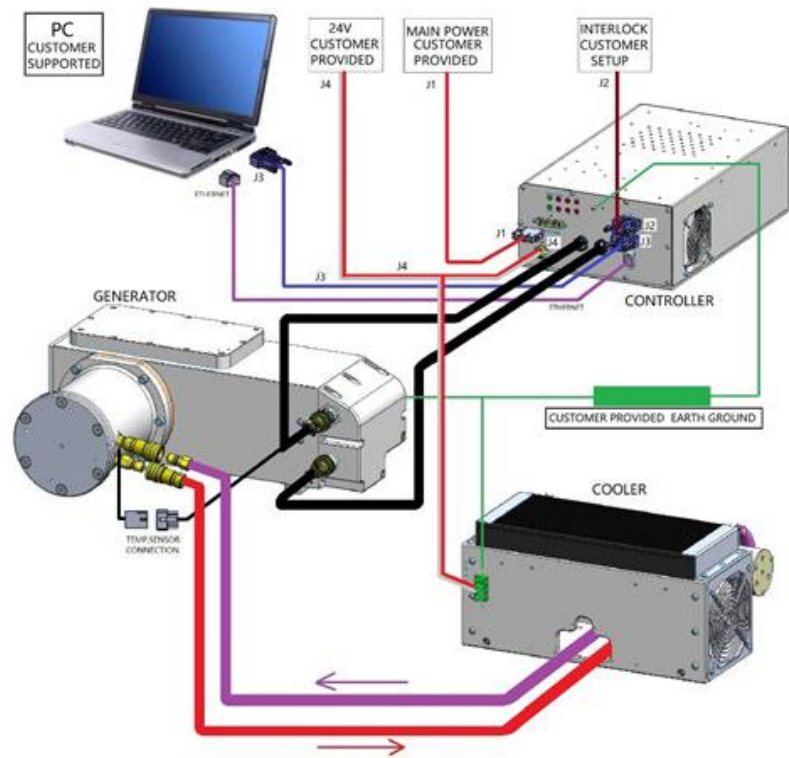
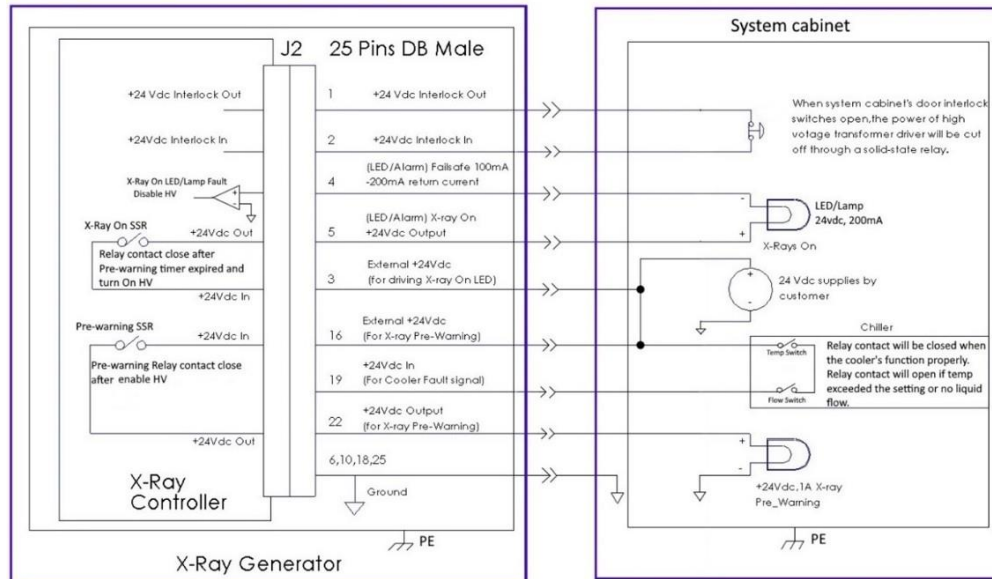


Figure 5: System Connection



16. TYPICAL EXTERNAL CIRCUITS



End of Document