

TAKE-OFF BLOCKS

SERIES MC

Ports G1/4 and G1/2
Modular



- Compact design
- Available with or without VNR (no return valve)

The take-off blocks, when equipped with a no return valve, allow the use of non lubricated air and should be inserted between the regulator and the lubricator.
If mounted as last element, they should be assembled with terminal flanges.

AIR TREATMENT

9

General Data

Construction	Modular, compact
Materials	Zama, aluminium, NBR, technopolymer
Ports	G1/4 G1/2
Weight	0,232 (MC1) Kg 0,379 (MC2) Kg 0,210 (MC2-B-SH) Kg
Take off ports	G1/4 G1/2
Mounting	In- line or wall mounting (in any position)
Working temperature	-5°C ÷ 50°C (with the dew point of the fluid lower than 2°C at the min. working temperature)
Finishing	Enamelled
Working pressure	0 ÷ 16 bar
Nominal flow (6 bar ΔP 1 bar)	MC1-B = 4080 NL/min MC1-B-VNR = 2350 NL/min MC2-B = 8400 NL/min MC2-B-VNR = 5600 NL/min MC2-B-SH = 4080 NL/min
Fluid	Compressed air

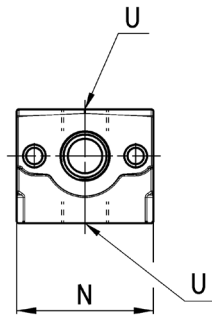
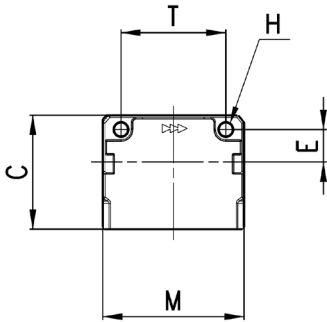
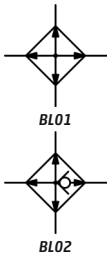
TAKE-OFF BLOCKS
SERIES MC - CODING EXAMPLES

Coding Example

MC	2	-	B	-	VNR
MC	SERIES				
2	SIZE 1 = G1/4 2 = G1/2				
B	TAKE OFF BLOCK				
VNR	VERSION = Standard VNR = With no return valve				

Take off blocks Series MC

BL01 = Take-off block
BL02 = Take-off block with VNR



Mod.	C	H	E	M	N	T	U
MC1-B	43	4,5	11	45	45	35	G1/4
MC1-B-VNR	43	4,5	11	45	45	35	G1/4
MC2-B	50	5,5	14	62	60	46	G1/2
MC2-B-VNR	50	5,5	14	62	60	46	G1/2