

# FILTERS

## SERIES MC

Ports G1/4, G3/8 and G1/2  
Modular  
Metal bowl and bayonet-type mounting



- Removal of impurities and condensate
- Quality of delivered air according to ISO 8573-1:2010, Classes [7:8:4] and [6:8:4]
- Manual, automatic or depressuring drain

Series MC filters are available with ports G1/4, G3/8 and G1/2.  
Bowls are made of metal with a transparent sight glass and have a condensate drain valve which can provide either a manual or semi-automatic function.

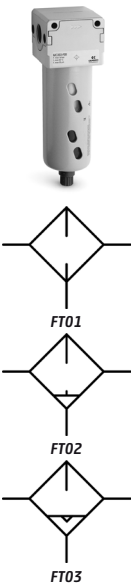
### General Data

<b>Construction</b>	Compact modular with filtering element in HDPE		
<b>Materials</b>	Zama, NBR, tecnopolymer		
<b>Ports</b>	G1/4	G3/8	G1/2
<b>Max condensate capacity</b>	28 cm <sup>3</sup>	72 cm <sup>3</sup>	72 cm <sup>3</sup>
<b>Weight</b>	0,339 kg	0,718 kg	0,688 kg
<b>Mounting</b>	Vertical in-line or wall-mounting		
<b>Working temperature</b>	-5°C ÷ 50°C at 10 bar (with the dew point of the fluid lower than 2°C at the min. working temperature)		
<b>Quality of delivered air according to ISO 8573-1:2010</b>	Class [6:8:4] with 5µm filtering element Class [7:8:4] with 25µm filtering element		
<b>Draining of condensate</b>	Semi-automatic manual, automatic protected depressurisation, direct G1/8 exhaust		
<b>Finishing</b>	Enamelled		
<b>Working pressure</b>	With standard drain and protected depressurisation 0,3 ÷ 16 bar With depressurisation 0,3 ÷ 10 bar With automatic drain 1,5 ÷ 12 bar for G3/8 and G1/2		
<b>Nominal flow</b>	See FLOW DIAGRAMS on the following pages		
<b>Fluid</b>	Compressed air		

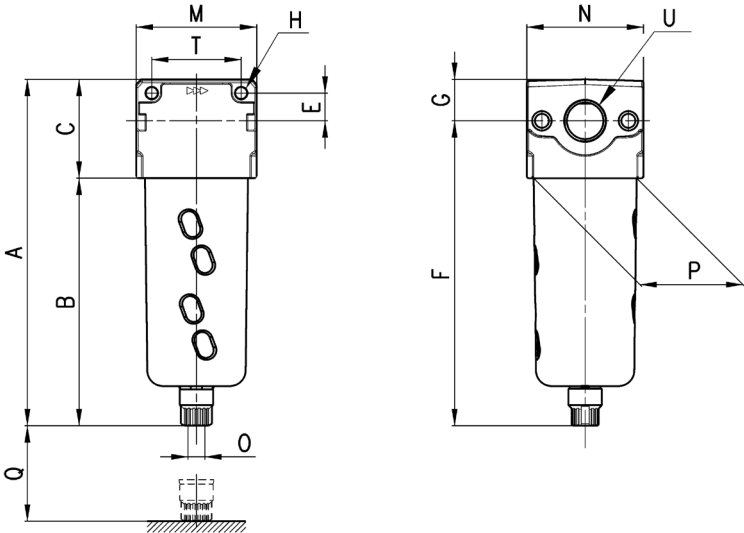
Coding Example

MC	2	02	-	F	0	0
MC	SERIES					
2	SIZE 1 = G1/4 2 = G3/8 - G1/2					
02	PORTS 04 = G1/4 38 = G3/8 02 = G1/2					
F	F = Filter					
0	FILTERING ELEMENT 0 = 25µm (standard) 1 = 5µm					
0	DRAINING OF CONDENSATE (further details in the dedicated section) 0 = Normal - semiautomatic (standard) 3 = Automatic drain (only for G3/8 and G1/2) 4 = Depressurisation (only G1/4) 5 = Depressurisation, protected 8 = No drain, port 1/8					

Filters Series MC

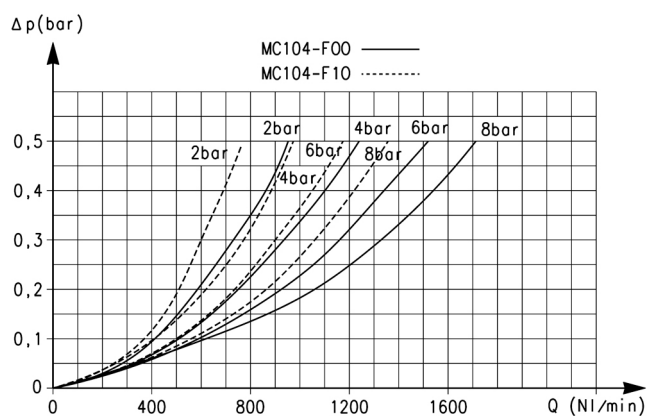


FT01 = Filter without drain with threaded port  
FT02 = Filter with semiautomatic manual drain  
FT03 = Filter with automatic drain



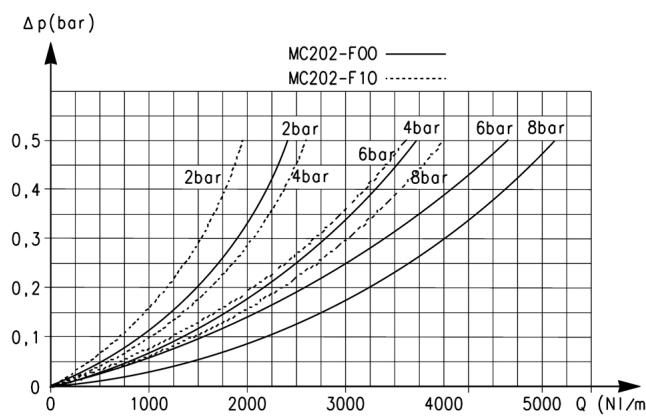
Mod.	A	B	C	E	F	G	H	M	N	O	P	Q	T	U
MC104-F00	143	102	41	11	126,5	16,5	4,5	45	45	G1/8	37	58	35	G1/4
MC238-F00	184	133	51	14	163	21	5,5	62	60	G1/8	53	72	46	G3/8
MC202-F00	184	133	51	14	163	21	5,5	62	60	G1/8	53	72	46	G1/2

## Flow diagrams for filters Series MC, G1/4 - G3/8 ports



Flow diagram for models:  
MC238-F00 and MC238-F10

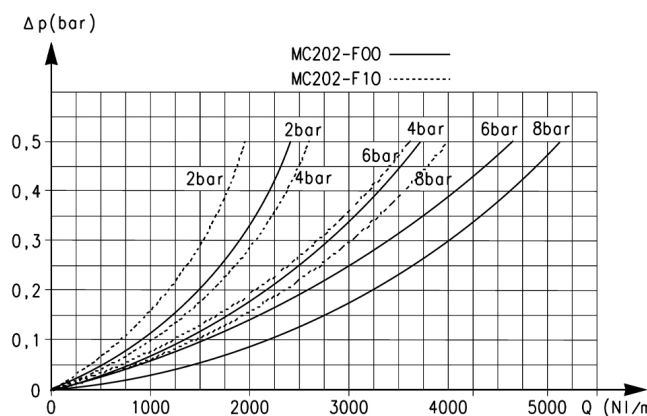
$\Delta P$  = Pressure drop (bar)  
Q = Flow (NL/min)



Flow diagram for models:  
MC104-F00 and MC104-F10

$\Delta P$  = Pressure drop (bar)  
Q = Flow (NL/min)

## Flow diagram for filters Series MC, G1/2 ports



Flow diagram for models:  
MC202-F00 and MC202-F10

$\Delta P$  = Pressure drop (bar)  
Q = Flow (NL/min)