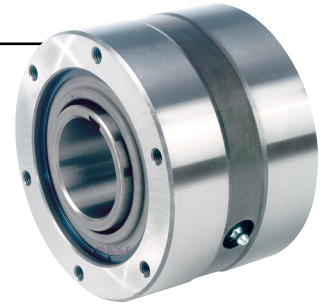


## Self-Contained Freewheels

# FSO 300-700, FSO-GR 300-700, HPI 300-700



### TYPE



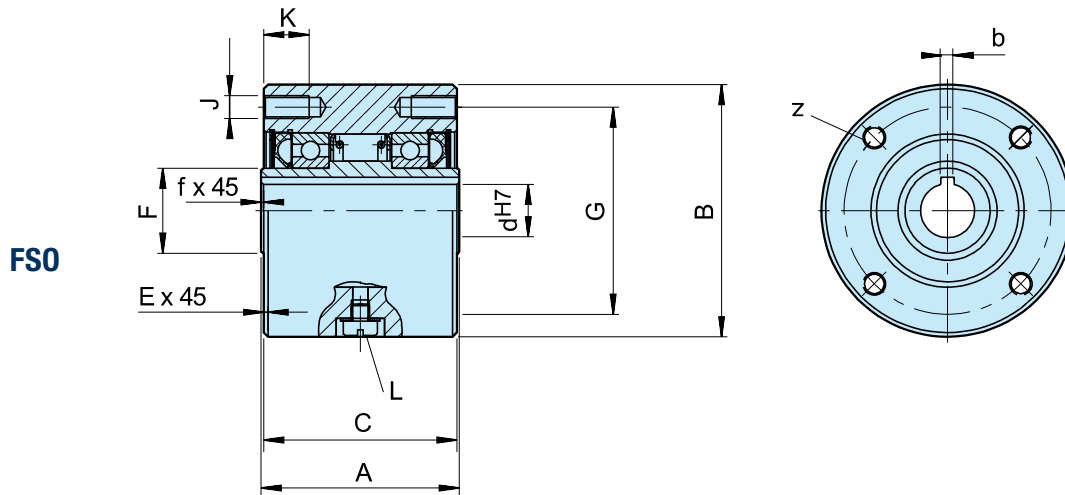
FSO..GR

Types FSO, FSO-GR, and HPI 300 to 700 are sprag type freewheels self-contained, sealed and bearing supported. Units are delivered oil or grease lubricated according to the type. It is a Formsprag USA design with a »full sprag complement« that gives a very high torque for a given diameter. Any overload is resisted by a sprag to sprag abutment, avoiding a sprag tilt over.

Types FSO and HPI are oil lubricated and use standard shaft lip seals. Type FSO-GR is grease lubricated and can be equipped with contact free labyrinth seals. Type HPI is specially designed for high speed indexing applications.

# Self-Contained Freewheels

## FSO, FSO-GR, HPI 300-700



Type	Size	Overrunning speeds			Number											Lubricant			Weight	Drag torque			
		FSO / FSO-GR / HPI Lip Seal	FSO-GR Labyrinth Seal	d <sup>4)</sup> -bxh	d <sup>4)</sup>	A	B	C	E	F	G	z	J	K	L	f	FSO	FSO..GR			HPI	T <sub>r</sub>	
		T <sub>KN</sub> <sup>1)</sup> [Nm]	n <sub>max</sub> <sup>2)</sup> [min <sup>-1</sup> ]	n <sub>max</sub> <sup>3)</sup> [min <sup>-1</sup> ]	min-max		-0,05																
FSO FSO-GR HPI	300	374	3000/900	3600/900	15-5x5	12... 19	63,50	76,20	60,45	1,6	28,58	66,67	4	M8	13	M6	0,8	7	10	14	1,6	18	
	400	408	2800/850	3600/850	18-6x6	12... 22	69,85	88,90	68,07	1,6	30	73	4	M8	13	M6	0,8	10	20	20	2,7	27	
	500	1598	2500/800	3000/800	30-8x7	19... 33	88,90	107,95	85,73	1,6	45	92	4	M8	16	M6	1,5	22	35	35	4,8	31	
	600	3060	2200/750	2400/750	40-12x8	24... 57	95,25	136,525	92,2	1,6	65	120,6	6	M8	16	M6	1,6	52	84	84	8,6	62	
						45-14x9																	
						50-14x6																	
						50-14x9																	
	700	6800	1600/450	2000/450	60-18x11	48... 82	127,00	180,975	123,85	1,6	90	158,75	8*	M10*	20	M6	1,6	168	280	280	19	156	
					65-18x11																		
					70-20x12						101,6 <sup>5)</sup>												

### NOTES

- 1)  $T_{max} = 1.5 \times T_{KN}$   
» Refer to Selection page 7 to 11
  - 2) Inner race/outer race
  - 3) Inner race/outer race
  - 4) Inch bore available on request
  - 5) Only for oversize bore  
Size 600 > 50 mm  
Size 700 > 75 mm
  - \*) 6 holes equally spaced at 60° plus  
2 extra-holes at 180°
- » Refer to mounting and maintenance instructions page 12 to 13

### MOUNTING EXAMPLE

