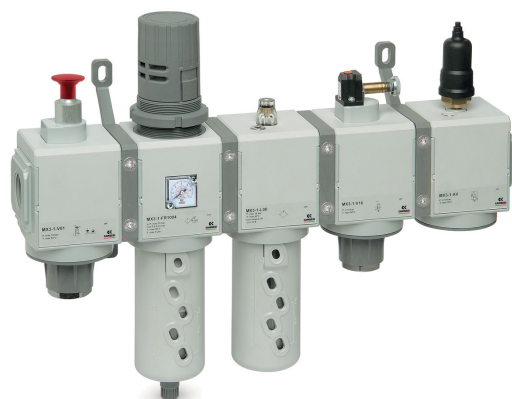


ASSEMBLED FRL

SERIES MX

MX2 ports: G3/8, G1/2, G3/4 - MX3 ports: G3/4, G1
Assembly through rapid clamps



- Compact design
- Dimensions optimization
- Great reliability
- Easy and quick maintenance
- Can be integrated with valves complying with the Machinery Directive 2006/42/CE
- Reduced weight

Series MX FRL can be easily assembled through rapid clamps which allow the connection among single components creating an unlimited number of compositions.

The FRL groups Series MX are also available in the already mounted version (with a single code).

The use of three different types of rapid clamps (standard, with wall fixing screws or with brackets) allows an easy mounting of the assembled groups and to carry out maintenance operations on the single components with no need to disassemble the group.

General Data

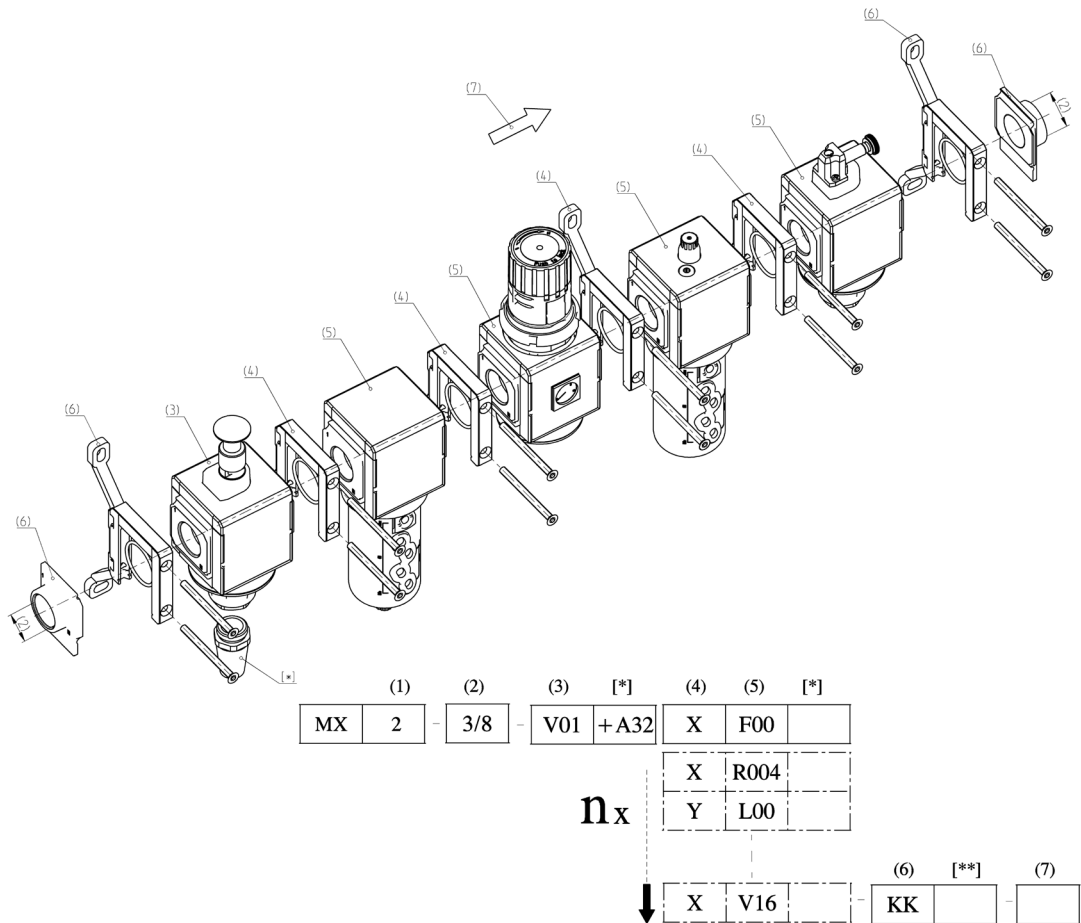
Construction	Modular, compact
Materials	See catalogue pages referring to the single component
Ports	MX2: G3/8 - G1/2 - G3/4 MX3: G3/4 - G1
Mounting	Vertical in-line Wall-mounting (by means of clamps) Panel mounting
Operating temperature	-5°C ÷ 50°C up to 16 bar (according to the single component characteristics) -5°C ÷ 60°C up to 10 bar (according to the single component characteristics)

Configuration of assembled groups Series MX

To configure the assembled groups Series MX, use the here below example and the related legend on the following page.

Configuration of the assembled group in the drawing:

MX2-3/8-V01+A32XF00XR004YL00XV16-KK



Coding example

MX	2	-	3/8	-	V01	X	F00	X	V1841AB	-	KK	-	LH
MX	SERIES												
2	(1)	SIZES 2 = G3/8 - G1/2 - G3/4 3 = G3/4 - G1											
3/8	(2)	IN / OUT THREADS 3/8 = G3/8 1/2 = G1/2 3/4 = G3/4 1 = G1											
V01	(3)	MODULE + [+] (to configure the modules, see the single components pages): F... = Filter FC... = Coalescing filter FCA... = Activated carbons filter R... = Pressure regulator L... = Lubricator FR... = Filter-Regulator V... = Lockable isolation valve V16...; V17...; V18...; V19... = Machinery Directive solenoid valves (use version without mounting accessories) (only for MX2) AV... = Soft start valve B... = Take-off block (MX2: G1/2 only - MX3: G1 only)											
	[*]	The following ACCESSORIES can be added after every single module: REGULATOR AND FILTER-REGULATOR MX2 +A12 = SWCN-P10-P3-2 (Electronic pressure switch) +A13 = SWCN-P10-P4-2 (Electronic pressure switch) +A14 = SWCN-P10-P4-M (Electronic pressure switch) +A52 = PG010-PB-1/8 (Pressure gauge) +A53 = PG010-PB-1/8-2 (Pressure gauge) +A54 = PG010-PB-1/8-M (Pressure gauge) +A55 = M053-P04 (Pressure gauge) +A56 = M053-P06 (Pressure gauge) +A57 = M053-P10 (Pressure gauge) +A58 = M063-P12 (Pressure gauge) LOCKABLE ISOLATION VALVE MX2 +A30 = 2901 1/2" (Silencier) +A31 = 2921 1/2" (Silencier) +A32 = 2931 1/2" (Silencier) +A33 = 2928 1/2" (Silencier) SOFT START VALVE +A00 = PM11-NA (Pressure switch, normally open) +A01 = PM11-NC (Pressure switch, normally closed) +A04 = PM11-SC (Pressure switch) +A05 = PM681-1 (Pressure switch) +A18 = PM681-3 (Pressure switch)											
		REGULATOR AND FILTER-REGULATOR MX3 +A15 = SWCN-P10-P3-2 (Electronic pressure switch) +A16 = SWCN-P10-P4-2 (Electronic pressure switch) +A17 = SWCN-P10-P4-M (Electronic pressure switch) +A59 = M063-P04 (Pressure gauge) +A60 = M063-P06 (Pressure gauge) +A61 = M063-P12 (Pressure gauge) +A62 = PG010-PB-1/4 (Pressure gauge) +A63 = PG010-PB-1/8-2 (Pressure gauge) +A64 = PG010-PB-1/8-M (Pressure gauge) LOCKABLE ISOLATION VALVE MX3 +A34 = 2901 3/4" (Silencier) +A35 = 2921 3/4" (Silencier) +A36 = 2931 3/4" (Silencier) +A37 = 2928 3/4" (Silencier)											
		TAKE-OFF BLOCK MX2 +A11 = PM681-1 (Pressure switch) +A24 = PM681-3 (Pressure switch) +A08 = PM11-NA (normally open pressure switch) with fitting for fixing to the module +A09 = PM11-NC (normally closed pressure switch) with fitting for fixing to the module +A03 = PM11-SC with fitting for fixing to the module Example: MX2-3/8-V01+A32XF00-KK-LH TAKE-OFF BLOCK MX3 +A06 = PM11-NA (normally open pressure switch) with fitting for fixing to the module +A07 = PM11-NC (normally closed pressure switch) with fitting for fixing to the module +A10 = PM681-1 (Pressure switch) +A25 = PM681+3 (Pressure switch) +A02 = PM11-SC with fitting for fixing to the module Example: MX3-3/4-V01+A36XF00-KK-LH ISOLATION VALVE MX2 / MX3 +A40 = U7H Coil UL (12V DC) +A41 = U77 Coil UL (24V DC) +A42 = U79 Coil UL (48V DC) +A43 = U7K Coil UL (110V AC) +A44 = U7J Coil UL (230V AC) +A45 = G7H Coil (12V DC) +A46 = G77 Coil (24V DC) +A47 = G79 Coil (48V DC) +A48 = G7K Coil (110V AC) +A49 = G7J Coil (230V AC)											
X	(4)	MODULES CONNECTION (according to the positioning scheme on the following page): X = Rapid clamp kit Z = Rapid clamp kit with wall fixing screw Y = Rapid clamp kit with wall fixing brackets											
F00	(5) + [*]	see MODULE (3)											
X	(4)												
V1841AB	(5) + [*]	see FORM (3) - if other forms are present											
KK	(6)	TERMINAL CONNECTIONS + [**] = no terminal connection HH = n° 1 rapid clamp kit with flanges (IN / OUT) JJ = n° 1 rapid clamp kit with wall fixing screws + flanges (IN / OUT) KK = n° 1 rapid clamp kit with wall fixing brackets + flanges (IN / OUT)											
	[**]	WALL CONNECTION: REGULATOR and FILTER-REGULATOR S = Bracket (only with clamps mod. X n.HH)											
LH	(7)	FLOW DIRECTION: = from left to right (standard) LH = from right to left											
	(4) + (5) + [*]	REPEATABLE COMBINATION for a "n" number of times											

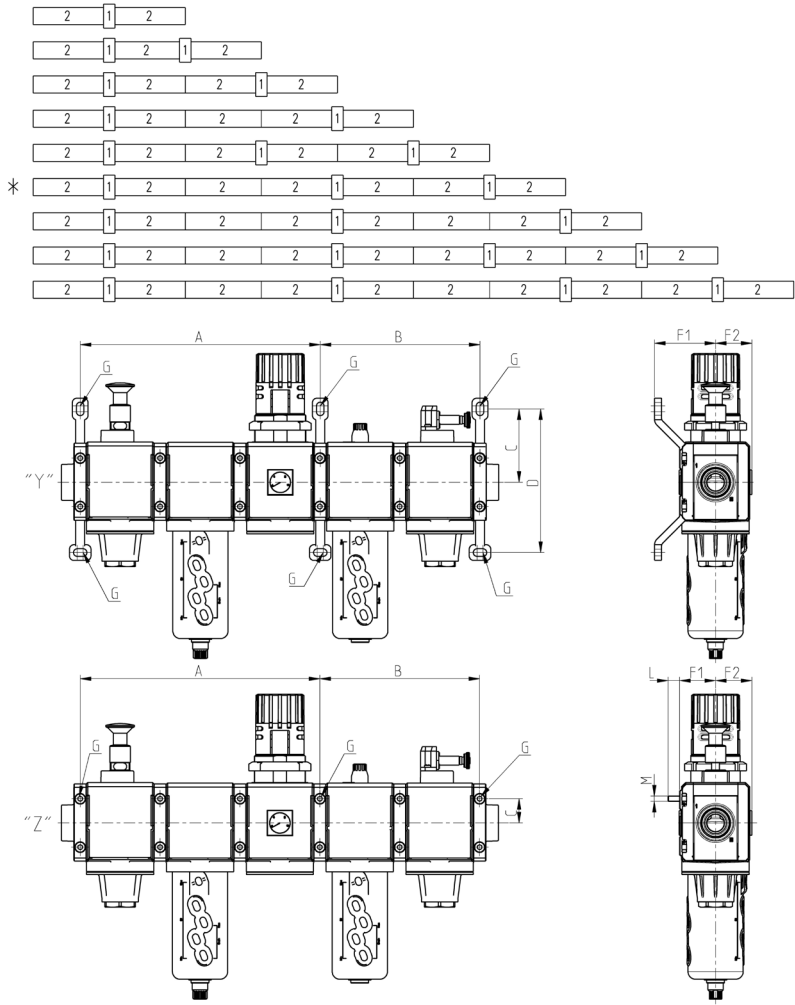
ASSEMBLED FRL
SERIES MX - APPLICATION EXAMPLES

Wall fixing - mounting dimensions and positioning scheme

Legend of the POSITIONING SCHEME:

1. rapid clamp with wall fixing screw or with wall fixing bracket
2. module / flange

* POSITIONING SCHEME referring to drawings "Y" and "Z".



Legend of the ASSEMBLED GROUPS DRAWINGS:
 "Y" = with rapid clamps with wall fixing brackets (MX...-Y)
 "Z" = with rapid clamp with wall fixing screws (MX...-Z)
 "G" = fixing point

Mod.	A	B	C	D	F1	F2	L	M
MX2-Y	210	140	68,5	134,5	70	37	-	-
MX2-Z	210	140	23	-	37,5	37	13,5	M5
MX3-Y	267	178	82	160	68	40,5	-	-
MX3-Z	267	178	27	-	40,5	40,5	13	M6

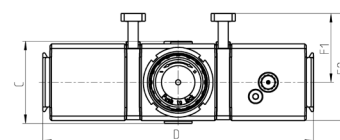
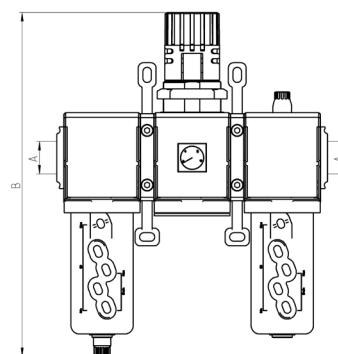
Coding example

MX	2	-	3/8	-	000001
MX	SERIES				
2	SIZE 2 = G3/8 - G1/2 - G3/4 3 = G3/4 - G1				
3/8	PORTS: 3/8 = G3/8 1/2 = G1/2 3/4 = G3/4 1 = G1				
000001	GROUP COMPOSITION: 000001 = F10 + R004 + L00 000002 = FR1004 + L00 000003 = V01 + FR1004 + L00 000004 = V01 + FR1004 000005 = FR1004 + V16 + AV 000006 = FR1004 + L00 + V16 + AV 000007 = V01 + FR1004 + V16 + AV 000008 = V01 + FR1004 + L00 + V16 + AV + PRESS. NO 000009 = V01 + FR1004 + L00 + V16 + AV + PRESS. NC 000010 = V01 + FR1004 + V16 + AV + PRESS. NO 000011 = V01 + FR1004 + V16 + AV + PRESS. NC 000012 = F13 + FC03				
	WARNING: IN THE PRESENCE OF METAL PIPES, THE USE OF CONNECTION FLANGES MAKE THE MAINTENANCE ACTIVITIES EASIER. INITIALLY PROCEED BY ASSEMBLING THE PIPES ON THE FLANGES, THEN FIX THE TREATMENT UNIT TO THE WALL THROUGH THE PROPER FIXING BRACKETS				

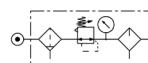
Composition of the assembled group 000001



Components:
 Filter
 Regulator
 Lubricator



Mod.	A	B	C	D	F1	F2
MX2-3/8-000001	G3/8	289	74,5	210	70	104,5
MX2-1/2-000001	G1/2	289	74,5	210	70	104,5
MX2-3/4-000001	G3/4	289	74,5	210	70	104,5
MX3-3/4-000001	G3/4	345	81	268,5	68	106
MX3-1-000001	G1	345	81	268,5	68	106



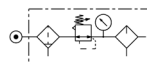
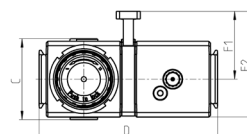
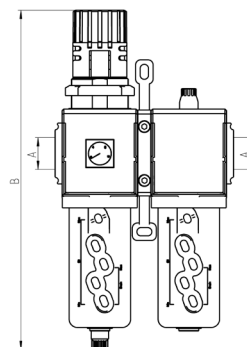
ASSEMBLED FRL
SERIES MX - DIMENSIONS

Composition of the assembled group 000002



Components:
Filter-regulator
Lubricator

Mod.	A	B	C	D	F1	F2
MX2-3/8-000002	G3/8	289	74,5	140	70	104,5
MX2-1/2-000002	G1/2	289	74,5	140	70	104,5
MX2-3/4-000002	G3/4	289	74,5	140	70	104,5
MX3-3/4-000002	G3/4	345	81	179	68	106
MX3-1-000002	G1	345	81	179	68	106

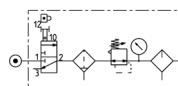
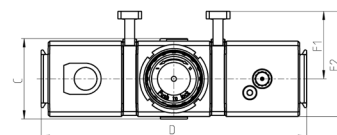
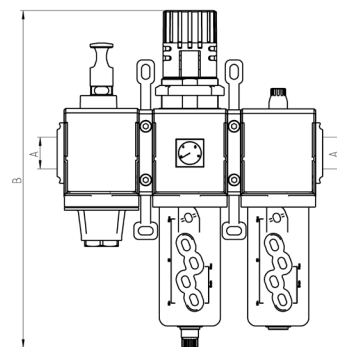


Composition of the assembled group 000003



Components:
Lockable isolation 3/2-way valve
Filter-regulator
Lubricator

Mod.	A	B	C	D	F1	F2
MX2-3/8-000003	G3/8	289	74,5	210	70	104,5
MX2-1/2-000003	G1/2	289	74,5	210	70	104,5
MX2-3/4-000003	G3/4	289	74,5	210	70	104,5
MX3-3/4-000003	G3/4	345	81	268,5	68	106
MX3-1-000003	G1	345	81	268,5	68	106

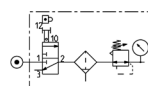
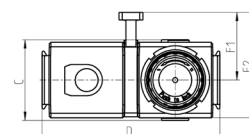
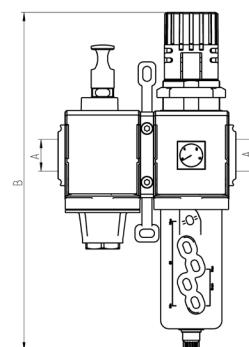


Composition of the assembled group 000004



Components:
 Lockable isolation 3/2-way valve
 Filter-regulator

Mod.	A	B	C	D	F1	F2
MX2-3/8-000004	G3/8	289	74,5	140	70	104,5
MX2-1/2-000004	G1/2	289	74,5	140	70	104,5
MX2-3/4-000004	G3/4	289	74,5	140	70	104,5
MX3-3/4-000004	G3/4	345	81	179	68	106
MX3-1-000004	G1	345	81	179	68	106

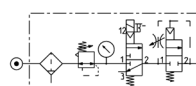
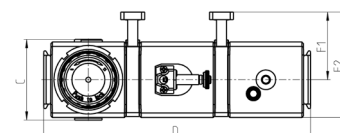
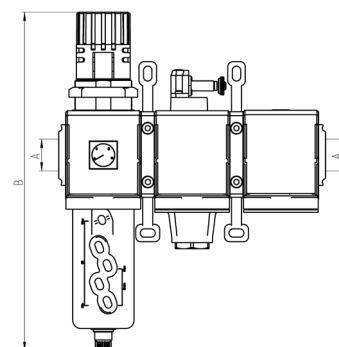


Composition of the assembled group 000005



Components:
 Filter-regulator
 Lockable isolation 3/2-way valve
 Soft start valve

Mod.	A	B	C	D	F1	F2
MX2-3/8-000005	G3/8	289	74,5	210	70	104,5
MX2-1/2-000005	G1/2	289	74,5	210	70	104,5
MX2-3/4-000005	G3/4	289	74,5	210	70	104,5
MX3-3/4-000005	G3/4	345	81	268,5	68	106
MX3-1-000005	G1	345	81	268,5	68	106

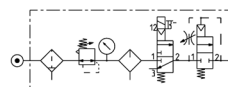
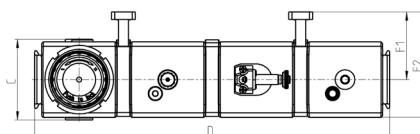
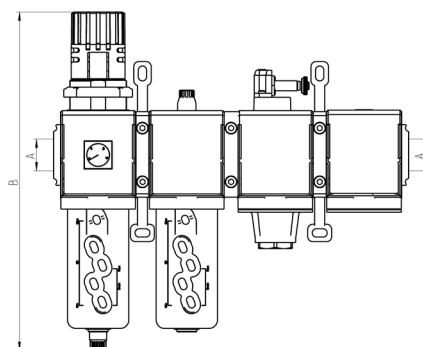


Composition of the assembled group 000006



Components:
Filter-regulator
Lubricator
Lockable isolation 3/2-way valve
Soft start valve

Mod.	A	B	C	D	F1	F2
MX2-3/8-000006	G3/8	289	74,5	280	70	104,5
MX2-1/2-000006	G1/2	289	74,5	280	70	104,5
MX2-3/4-000006	G3/4	289	74,5	280	70	104,5
MX3-3/4-000006	G3/4	345	81	358	68	106
MX3-1-000006	G1	345	81	358	68	106

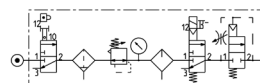
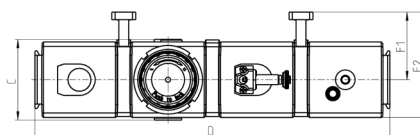
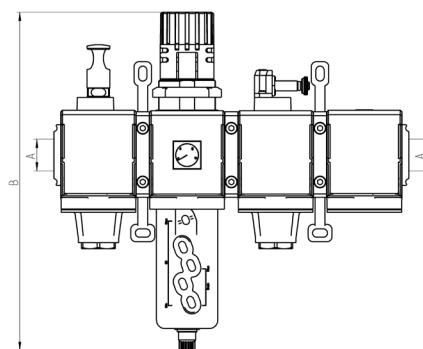


Composition of the assembled group 000007



Components:
Lockable isolation 3/2-way valve
Filter-regulator
Lockable isolation 3/2-way valve
Soft start valve

Mod.	A	B	C	D	F1	F2
MX2-3/8-000007	G3/8	289	74,5	280	70	104,5
MX2-1/2-000007	G1/2	289	74,5	280	70	104,5
MX2-3/4-000007	G3/4	289	74,5	280	70	104,5
MX3-3/4-000007	G3/4	345	81	358	68	106
MX3-1-000007	G1	345	81	358	68	106

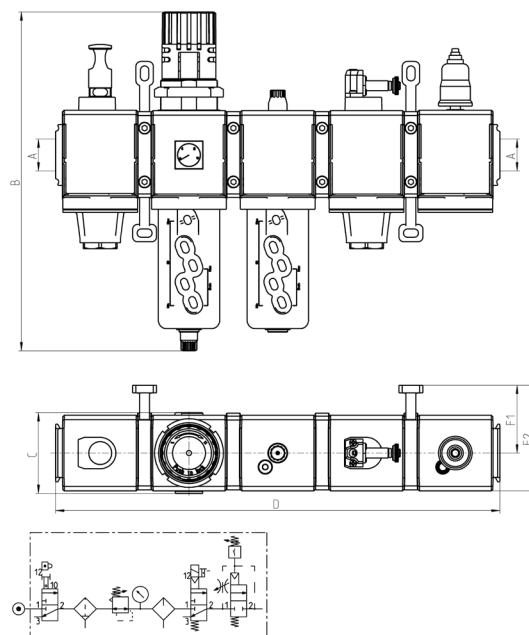


Composition of the assembled group 000008



Components:
 Lockable isolation 3/2-way valve
 Filter-regulator
 Lubricator
 Lockable isolation 3/2-way valve
 Soft start valve + pressure switch (NO)

Mod.	A	B	C	D	F1	F2
MX2-3/8-000008	G3/8	289	74,5	350	70	104,5
MX2-1/2-000008	G1/2	289	74,5	350	70	104,5
MX2-3/4-000008	G3/4	289	74,5	350	70	104,5
MX3-3/4-000008	G3/4	345	81	447,5	68	106
MX3-1-000008	G1	345	81	447,5	68	106

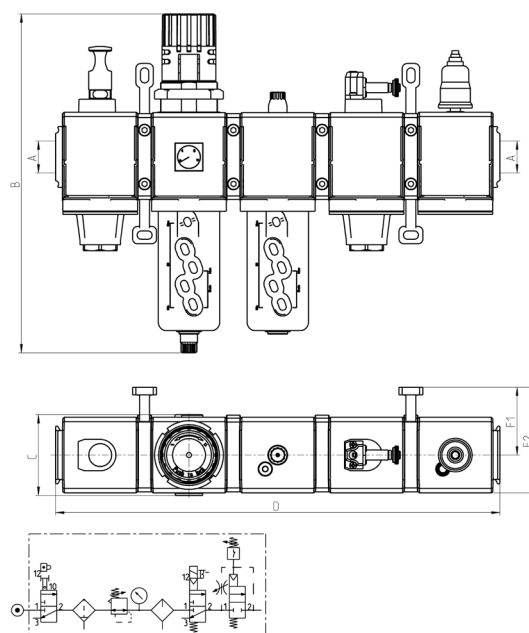


Composition of the assembled group 000009



Components:
 Lockable isolation 3/2-way valve
 Filter-regulator
 Lubricator
 Lockable isolation 3/2-way valve
 Soft start valve + pressure switch (NC)

Mod.	A	B	C	D	F1	F2
MX2-3/8-000009	G3/8	289	74,5	350	70	104,5
MX2-1/2-000009	G1/2	289	74,5	350	70	104,5
MX2-3/4-000009	G3/4	289	74,5	350	70	104,5
MX3-3/4-000009	G3/4	345	81	447,5	68	106
MX3-1-000009	G1	345	81	447,5	68	106

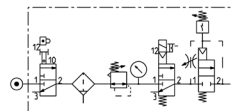
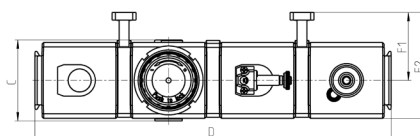
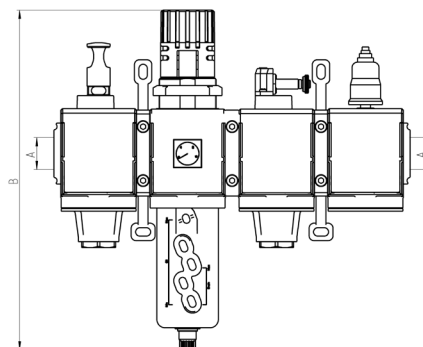


Composition of the assembled group 000010



Components:
Lockable isolation 3/2-way valve
Filter-regulator
Lockable isolation 3/2-way valve
Soft start valve + pressure switch (NO)

Mod.	A	B	C	D	F1	F2
MX2-3/8-000010	G3/8	289	74,5	280	70	104,5
MX2-1/2-000010	G1/2	289	74,5	280	70	104,5
MX2-3/4-000010	G3/4	289	74,5	280	70	104,5
MX3-3/4-000010	G3/4	345	81	358	68	106
MX3-1-000010	G1	345	81	358	68	106

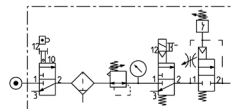
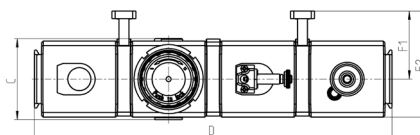
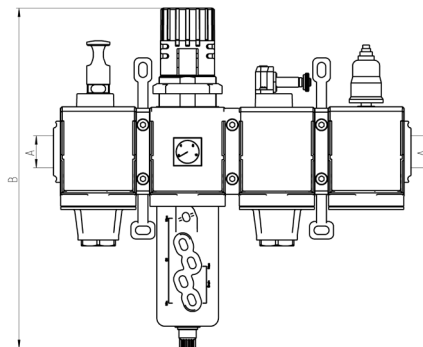


Composition of the assembled group 000011



Components:
Lockable isolation 3/2-way valve
Filter-regulator
Lockable isolation 3/2-way valve
Soft start valve + pressure switch (NC)

Mod.	A	B	C	D	F1	F2
MX2-3/8-000011	G3/8	289	74,5	280	70	104,5
MX2-1/2-000011	G1/2	289	74,5	280	70	104,5
MX2-3/4-000011	G3/4	289	74,5	280	70	104,5
MX3-3/4-000011	G3/4	345	81	358	68	106
MX3-1-000011	G1	345	81	358	68	106



Composition of the assembled group 000012



Components:
Filter
Coalescing filter

Mod.	A	B	C	D	F1	F2
MX2-3/8-000012	G3/8	210	72	140	70	104,5
MX2-1/2-000012	G1/2	210	72	140	70	104,5
MX2-3/4-000012	G3/4	210	72	140	70	104,5
MX3-3/4-000012	G3/4	231	78	179	68	106
MX3-1-000012	G1	231	78	179	68	106

