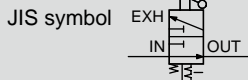


Residual pressure exhaust valve Standard White Series

# V1000-W/V3000-W Series

One action exhaust operation. Ideal for preventing accidents due to residual pressure in pneumatic lines.

● Port size: 1/8 to 1/2



## Specifications

Item	V1000-W		V3000-W		
Appearance					

Item		V1000-6-W	V1000-8-W	V3000-8-W	V3000-10-W	V3000-15-W
Working fluid		Compressed air				
Max. working pressure	MPa	1.0 (≈150 psi, 10 bar)				
Proof pressure	MPa	1.5 (≈220 psi, 15 bar)				
Ambient / fluid temperatures		°C				
Operation lever switching angle		90°				
Operating force	Pushing force N	18		80		
	Torque N·m	0.5		2		
Valve section leakage	cm <sup>3</sup> /min(ANR)	10				
External leakage	cm <sup>3</sup> /min(ANR)	10				
Port size	IN/OUT	1/8	1/4	1/4	3/8	1/2
	(Rc,NPT,G)	EXH		3/8		
Weight	kg	0.17		0.25		
Effective cross-sectional area {mm <sup>2</sup> }	IN/OUT	15	18	40	70	85
	OUT / EXH	5		40	50	50

## Option weight

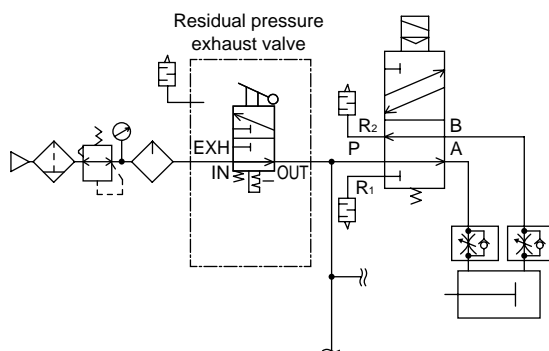
\* Add to the weight of the standard accessories.

Unit: kg

Code	Attachment						
	A6*W	A8*W	A10*W	A15*W	A20*W	BW	S
V1000	0.09	0.09	0.09	0.16	0.16	0.1	0.004
V3000	0.16	0.16	0.16	0.16	0.16	0.17	0.015

## Applications

Explanation: For safety, release compressed air in the pneumatic circuit from the residual pressure exhaust valve before repairing or adjusting the solenoid valve or air cylinder, etc.



### How to order

- F.R.L.1000 Series

V1000 - 6 - W - - A6W

- F.R.L.3000, 4000 series

V3000 - 8 - W - - A6W

A Model No.

B Port size

C Port thread

D Option

E Display unit

F Attachment

Code	Description	A Model No.	
		V1000	V3000
<b>B Port size</b>			
6	Rc1/8	●	
8	Rc1/4	●	●
10	Rc3/8		●
15	Rc1/2		●
<b>C Port thread</b>			
Blank	Rc thread	●	●
N	NPT thread	●	●
G	G thread	●	●
<b>D Option</b>			
Blank	Standard flow (left → right)	●	●
X1	IN/OUT reverse flow (right → left)	●	●
<b>E Display unit</b>			
Blank	MPa display, Rc thread	●	●
J1	MPa display, NPT, G thread	●	●
<b>F Other attachments</b>			
Blank	None	●	●
A6*W	1/8 pipe adaptor set	●	
A8*W	1/4 pipe adaptor set	●	●
A10*W	3/8 pipe adaptor set	●	●
A15*W	1/2 pipe adaptor set		●
A20*W	3/4 pipe adaptor set		●
BW	C type bracket	●	●
S	Silencer	●	●
<b>* Adaptor thread</b>			
Blank	Rc thread	●	●
N	NPT thread	●	●
G	G thread	●	●

### ⚠ Precautions for model No. selection

- \*1: The pipe adaptor set and C type bracket cannot be used together.
- \*2: The joiner set is enclosed with the pipe adaptor set.

### Specifications for rechargeable battery (Catalog No. CC-1226A)

- Structure compatible with rechargeable battery manufacturing process

V3000 - ..... - P4\*

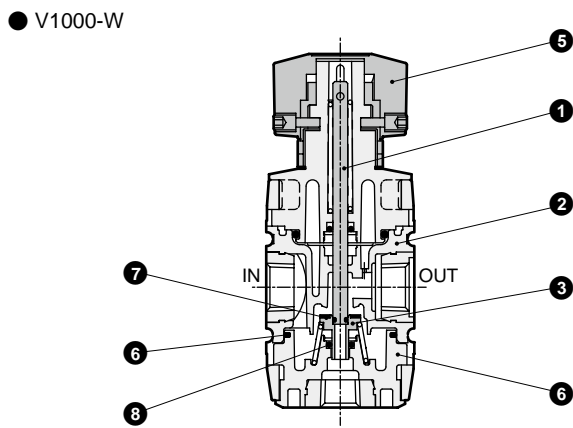
- ⚠ Select the reverse regulator (R\*100-W) or reverse filter regulator (W\*100-W) when installing the V\*000-W onto the primary side of the regulator or filter regulator.

F.R.L.
F.R.
F (Filtr)
R (Reg)
L (Lub)
Drain Separ
Mech Press SW
Res press exh valve
SlowStart
Anti-bac/Bac-remove Filtr
Film Resist FR
Oil-ProhR
Med Press FR
No Cu/ PTFE FRL
Outdrs FRL
Adapter Joiner
Press Gauge
CompFRL
LgFRL
PrecsR
VacF/R
Clean FR
ElecPneuR
AirBoost
Speed Ctrl
Silncr
CheckV/ other
Fit/Tube
Nozzle
Air Unit
PrecsCompn
Electro Press SW
ContactSW
AirSens
PresSW Cool
Air Flo Sens/Ctrl
WaterRISens
TotAirSys (Total Air)
TotAirSys (Gamma)
Gas generator
RefrDry
DesicDry
HiPolymDry
MainFiltr
Dischrg etc
Ending

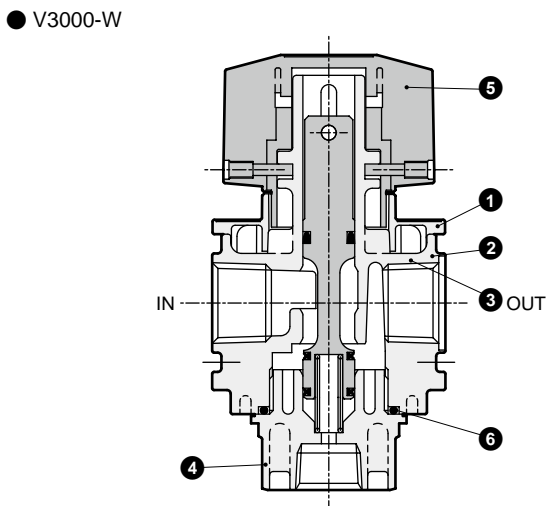
# V\*000-W Series

## F.R.L. Internal structure and parts list

- F.R.
- F (Filtr)
- R (Reg)
- L (Lub)
- Drain Separ
- Mech Press SW
- Res press exh valve
- SlowStart
- Anti-bac/Bac-remove Filtr
- Film Resist FR
- Oil-ProhR
- Med Press FR
- No Cu/PTFE FRL
- Outdrs FRL
- Adapter Joiner
- Press Gauge
- CompFRL
- LgFRL
- PrecsR
- VacF/R
- Clean FR
- ElecPneUR
- AirBoost
- Speed Ctrl
- Silncr
- CheckV/other
- Fit/Tube
- Nozzle
- Air Unit
- PrecsCompn
- Electro Press SW
- ContactSW
- AirSens
- PresSW Cool
- Air Flo Sens/Ctrl
- WaterRiSens
- TotAirSys (Total Air)
- TotAirSys (Gamma)
- Gas generator
- RefrDry
- DesicDry
- HiPolymDry
- MainFiltr
- Dischrg etc
- Ending



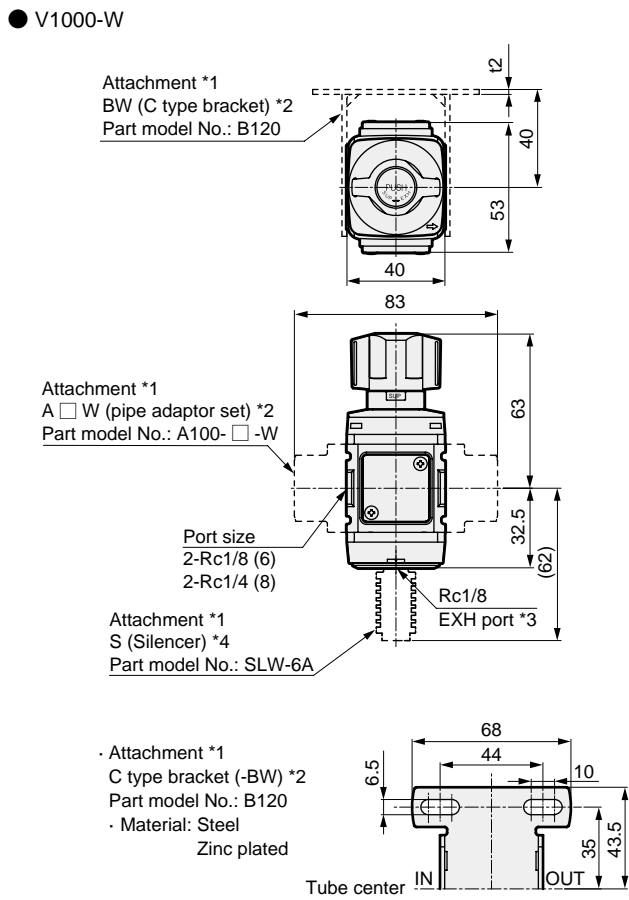
No.	Part name	Material
1	Spool	Steel
2	Body assembly	Polyamide resin, steel
3	Valve element	Copper alloy, nitrile rubber
4	Bottom plug	Polyamide resin, steel
5	Knob	Polyacetal resin
6	Packing	Nitrile rubber
7	O-ring	Nitrile rubber
8	O-ring	Nitrile rubber



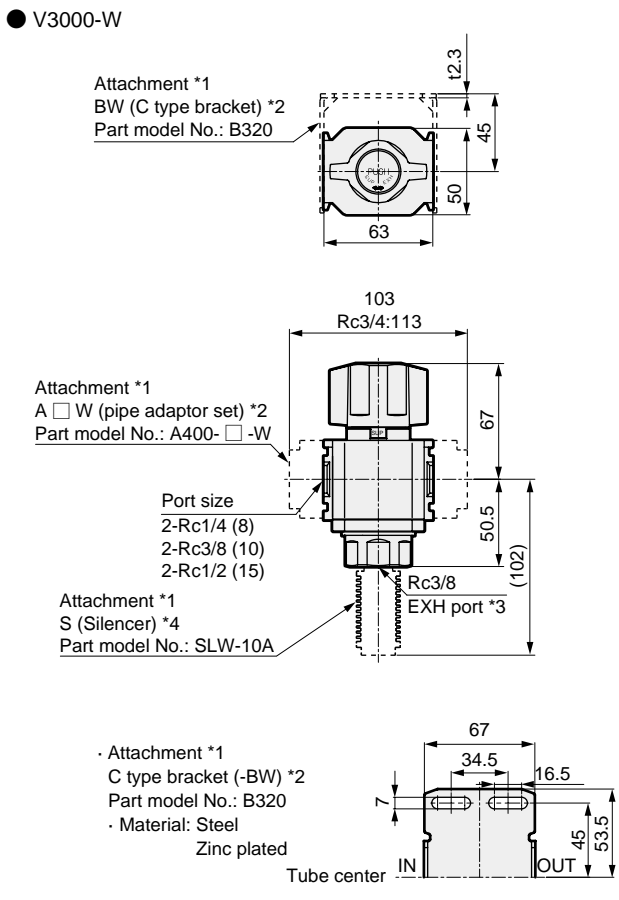
No.	Part name	Material
1	Plate cover	ABS resin
2	Body	Aluminum alloy die-casting
3	Spool assembly	Aluminum alloy urethane rubber resin
4	Bottom plug	PBT resin *1
5	Knob	Polyacetal resin
6	O-ring	Nitrile rubber

\*1: The metal bottom plug is made to order.

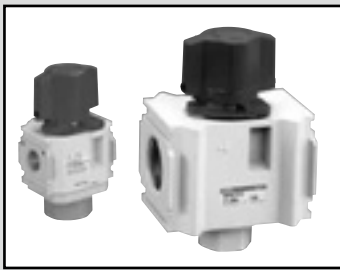
## Dimensions



- \*1: The attachment is attached at delivery.
- \*2: The C type bracket and pipe adaptor set cannot be used together.
- \*3: The EXH port is dedicated for silencer mounting.
- \*4: The silencer is made of flame-resistant resin (UL94 Standard V-0 or equivalent). Note that the element is not made of flame-resistant resin.



- \*1: The attachment is attached at delivery.
- \*2: The C type bracket and pipe adaptor set cannot be used together.
- \*3: The EXH port is dedicated for silencer mounting.
- \*4: The silencer is made of flame-resistant resin (UL94 Standard V-0 or equivalent). Note that the element is not made of flame-resistant resin.

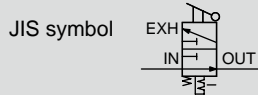


Residual pressure exhaust valve with keyhole (OSHA compliant) Standard White Series

# V3010-W/V6010-W Series

Ideal for preventing accidents due to residual pressure in pneumatic lines.

● Port size: 1/4 to 1



## Specifications

Item	V3010-8-W	V3010-10-W	V3010-15-W	V6010-20-W	V6010-25-W	
Working fluid	Compressed air					
Max. working pressure MPa	1.0 (≈150 psi, 10 bar)					
Proof pressure MPa	1.5 (≈220 psi, 15 bar)					
Ambient / fluid temperatures °C	5 (41°F) to 60 (140°F)					
Operation lever switching angle	90°					
Operating force	Pushing force N	80 or less				
	Torque N·m	2.5 or less				
Valve seat leakage cm <sup>3</sup> /min(ANR)	10 or less					
External leakage cm <sup>3</sup> /min(ANR)	10 or less					
Port size (Rc, NPT, G)	IN/OUT	1/4	3/8	1/2	Rc 3/4	Rc1
	EXH	3/8			Rc1/2	
Weight kg	0.3			0.8		
Eff. X-sectional area (mm <sup>2</sup> )	IN→OUT	40	70	85	145	150
	OUT→EXH	40	50	50	105	110

## OSHA (Occupational Safety and Health Administration)

OSHA establishes the US safety standards for employees.

### [Lockout/Tagout Regulation]

When conducting maintenance on machinery, close the air source with a shut-off valve and simultaneously discharge the residual pressure. (Residual pressure exhaust valve) If a third party inadvertently operates the valve during this operation and compressed air is applied, the cylinder, etc., could move suddenly and injure personnel. This standard states that, "All valves used for such purposes shall have a key or a structure which can be locked with a key."

### ⚠ Precautions for model No. selection

\*1: The pipe adaptor set and C type bracket cannot be used together.

\*2: The joiner set is enclosed with the pipe adaptor set.

⚠ Select the reverse regulator (R\*100-W) or reverse filter regulator (W\*100-W) when installing the V\*010-W onto the primary side of the regulator or filter regulator.

Option weight \* Add to the weight of the standard accessories. Unit: kg

Code	Attachment							
	A8*W	A10*W	A15*W	A20*W	A25*W	A32*W	BW	S
V3010	0.16	0.16	0.16	0.16	0.16		0.17	0.015
V6010				0.53	0.53	0.53	0.34	0.02

Specifications for rechargeable battery (Catalog No. CC-1226A)

● Structure compatible with rechargeable battery manufacturing process

V3010 - ..... - P4\*

V6010

## How to order

● F.R.L.2000, 3000, 4000 series

V3010 - 8 - W - (A8W)

● F.R.L.6000, 8000 series

V6010 - 20 - W - (A20W) (White type)

A Model No.

B Port size

C Port thread

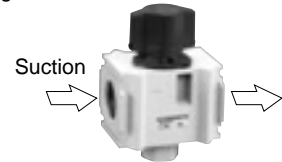
D Option

E Display unit

F Attachment

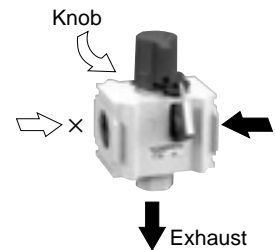
## Usage methods

● Regular use



● During maintenance work

The component can be locked when residual pressure is released.



		A Model No.	
		V3010	V6010
Code	Description		
<b>B Port size</b>			
8	1/4	●	
10	3/8	●	
15	1/2	●	
20	3/4		●
25	1		●
<b>C Port thread</b>			
Blank	Rc thread	●	●
N	NPT thread	●	●
G	G thread	●	●
<b>D Option</b>			
Blank	None	●	●
X1	IN/OUT reverse flow (right → left)	●	●
<b>E Display unit</b>			
Blank	MPa display, Rc thread	●	●
J1	MPa display, NPT, G thread	●	●
<b>F Other attachments</b> *1, *2			
Blank	None	●	●
A8W	1/4 pipe adaptor set	●	
A10W	3/8 pipe adaptor set	●	
A15W	1/2 pipe adaptor set	●	
A20W	3/4 pipe adaptor set	●	●
A25W	1 pipe adaptor set	●	●
A32W	1 1/4 pipe adaptor set		●
BW	C type bracket	●	●
S	Silencer	●	●
<b>* Adaptor thread</b>			
Blank	Rc thread	●	●
N	NPT thread	●	●
G	G thread	●	●

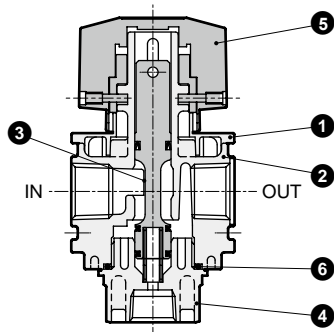
F.R.L.  
F.R.  
F (Filtr)  
R (Reg)  
L (Lub)  
Drain Separ  
Mech Press SW  
Res press exh valve  
SlowStart  
Anti-bac/Bac-remove Filtr  
Film Resist FR  
Oil-ProHR  
Med Press FR  
No Cu/ PTFE FRL  
Outdris FRL  
Adapter Joiner Press Gauge  
CompFRL  
LgFRL  
PrecsR  
VacF/R  
Clean FR  
ElecPneuR  
AirBoost  
Speed Ctrl  
Silncr  
CheckV/ other  
Fit/Tube  
Nozzle  
Air Unit  
PrecsCompn  
Electro Press SW  
ContactSW  
AirSens  
PresSW Cool  
Air Flo Sens/Ctrl  
WaterRISens  
TotAirSys (Total Air)  
TotAirSys (Gamma)  
Gas generator  
RefrDry  
DesicDry  
HiPolymDry  
MainFiltr  
Dischrg etc  
Ending

# V\*010-W Series

## F.R.L. Internal structure and parts list

- F.R.
- F (Filtr)
- R (Reg)
- L (Lub)
- Drain Separ
- Mech Press SW
- Res press exh valve
- SlowStart
- Anti-bac/Bac-remove Filt
- Film Resist FR
- Oil-Prohr
- Med Press FR
- No Cu/PTFE FRL
- Outdrs FRL
- Adapter Joiner
- Press Gauge
- CompFRL
- LgFRL
- PrecsR
- VacF/R
- Clean FR
- ElecPneur
- AirBoost
- Speed Ctrl
- Silncr
- CheckV/other
- Fit/Tube
- Nozzle
- Air Unit
- PrecsCompn
- Electro Press SW
- ContactSW
- AirSens
- PresSW Cool
- Air Flo Sens/Ctrl
- WaterRtSens
- TotAirSys (Total Air)
- TotAirSys (Gamma)
- Gas generator
- RefrDry
- DesicDry
- HiPolymDry
- MainFiltr
- Dischrg etc
- Ending

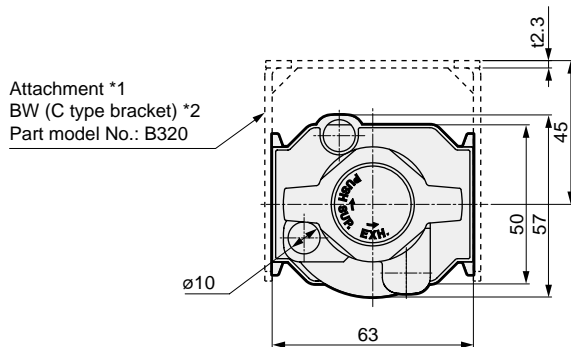
### ● V3010-W



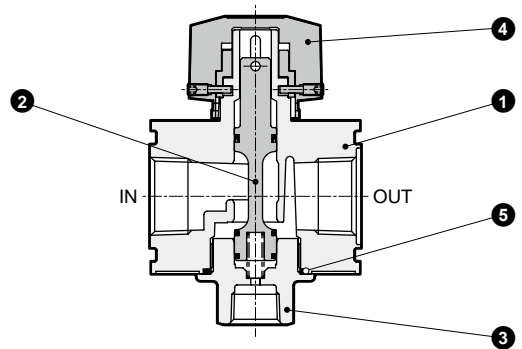
No.	Part name	Material
1	Plate cover	ABS resin (*2)
2	Body	Aluminum alloy die-casting
3	Spool assembly	Aluminum alloy urethane rubber resin
4	Bottom plug	PBT resin (*1) (*2)
5	Knob	Aluminum alloy die-casting
6	O-ring	Nitrile rubber

\*1: The metal bottom plug is made to order.  
 \*2: Flame-resistant resin equivalent to UL94 standard V-0

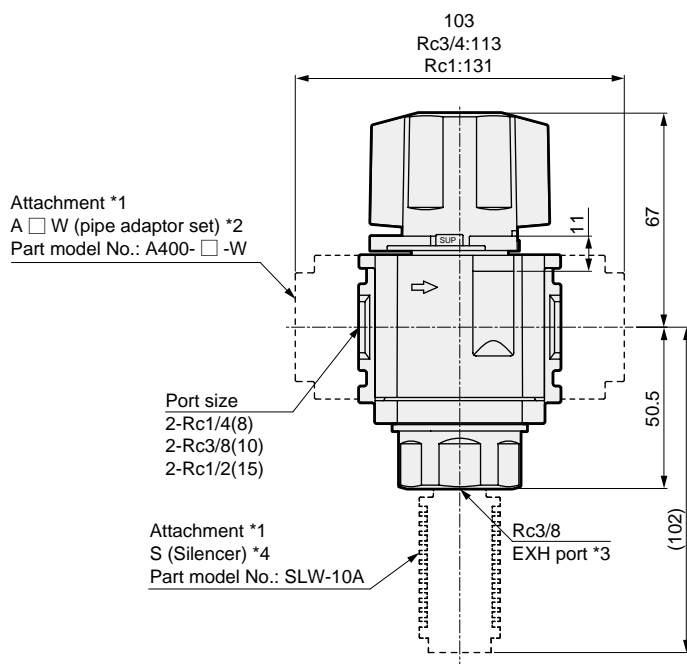
### Dimensions (V3010-W)



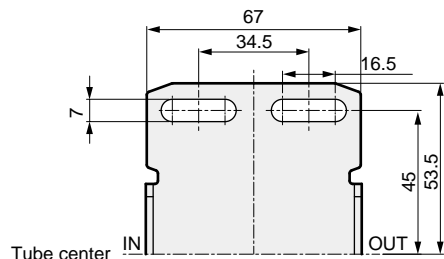
### ● V6010-W



No.	Part name	Material
1	Body	Aluminum alloy die-casting
2	Spool assembly	Aluminum alloy, hydrogenated nitrile rubber
3	Bottom plug	Aluminum alloy die-casting
4	Knob	Aluminum alloy die-casting
5	O-ring	Nitrile rubber

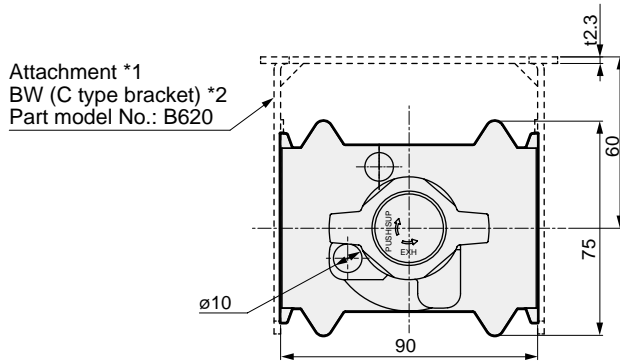


· Attachment \*1  
 C type bracket (-BW) \*2  
 Part model No.: B320  
 · Material: Steel  
 Zinc plated

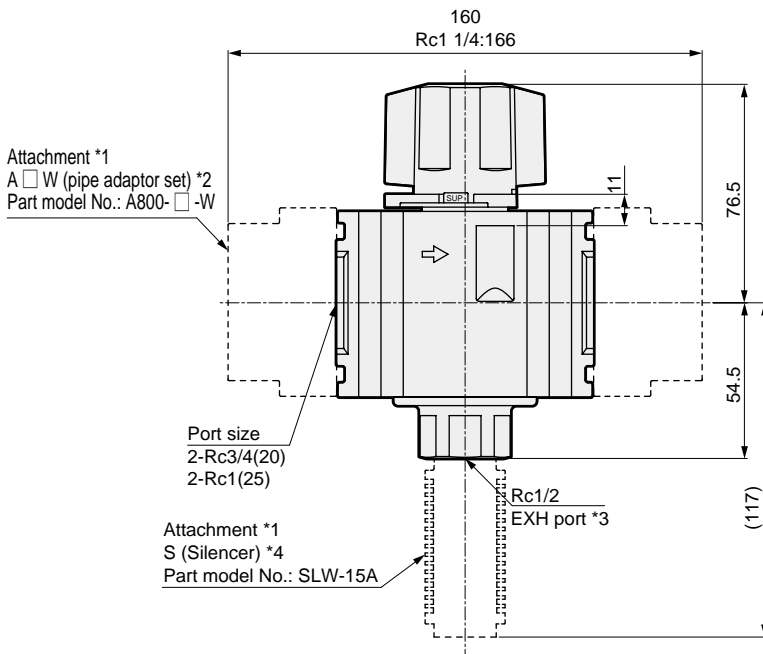


\*1: The attachment is attached at delivery.  
 \*2: The C type bracket and pipe adaptor set cannot be used together.  
 \*3: The EXH port is dedicated for silencer mounting.  
 \*4: The silencer is made of flame-resistant resin (UL94 Standard V-0 or equivalent).  
 Note that the element is not made of flame-resistant resin.

### Dimensions (V6010-W)



Attachment \*1  
BW (C type bracket) \*2  
Part model No.: B620



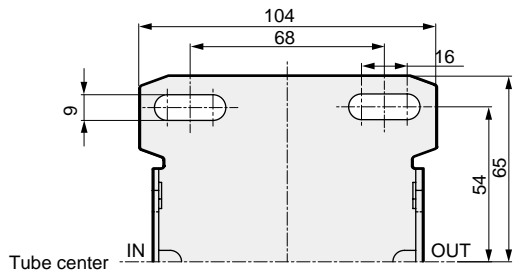
Attachment \*1  
A □ W (pipe adaptor set) \*2  
Part model No.: A800-□ -W

Port size  
2-Rc3/4(20)  
2-Rc1(25)

Attachment \*1  
S (Silencer) \*4  
Part model No.: SLW-15A

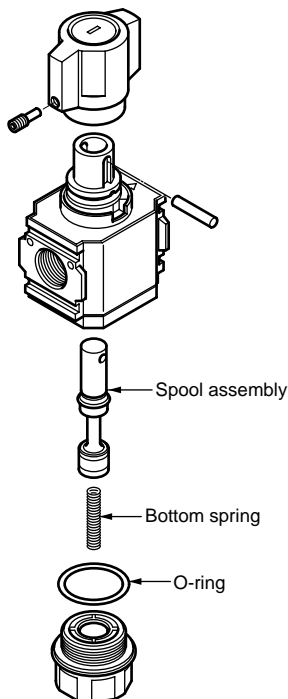
Rc1/2  
EXH port \*3

Attachment \*1  
C type bracket (-BW) \*2  
Part model No.: B620  
Material: Steel  
Zinc plated



- \*1: The attachment is attached at delivery.
- \*2: The C type bracket and pipe adaptor set cannot be used together.
- \*3: The EXH port is dedicated for silencer mounting.
- \*4: The silencer is made of flame-resistant resin (UL94 Standard V-0 or equivalent).  
Note that the element is not made of flame-resistant resin.

### Residual pressure exhaust valve (V3000-W, V3010-W) optional parts diagram



#### Spool assembly

(Set of spool assembly, bottom spring)

Model	Spool assembly model No.
V3000, V3010	V3000-SPOOL

- F.R.L.
- F.R.
- F (Filtr)
- R (Reg)
- L (Lub)
- Drain Separ
- Mech Press SW
- Res press exh valve
- SlowStart
- Anti-bac/Bac-remove Filtr
- Film Resist FR
- Oil-ProhR
- Med Press FR
- No Cu/ PTFE FRL
- Outdrs FRL
- Adapter Joiner Press Gauge
- CompFRL
- LgFRL
- PrecsR
- VacF/R
- Clean FR
- ElecPneuR
- AirBoost
- Speed Ctrl
- Silncr
- CheckV/ other
- Fit/Tube
- Nozzle
- Air Unit
- PresCompn
- Electro Press SW
- ContactSW
- AirSens
- PresSW Cool
- Air Flo Sens/Ctrl
- WaterRISens
- TotAirSys (Total Air)
- TotAirSys (Gamma)
- Gas generator
- RefrDry
- DesicDry
- HiPolymDry
- MainFiltr
- Dischrg etc
- Ending