

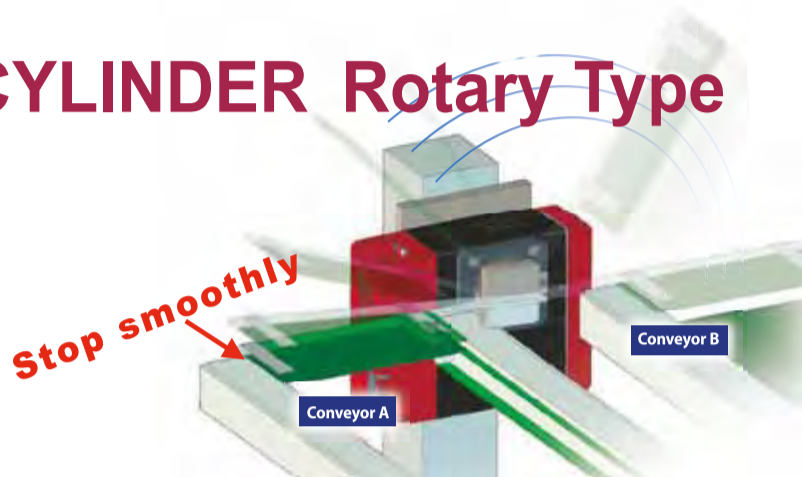
Rotary Series

24V Pulse Motor

Incremental Encoder

Battery-less Absolute Encoder is available

ELECYLINDER Rotary Type



Build in controller is standard
Wireless operation is available as an option

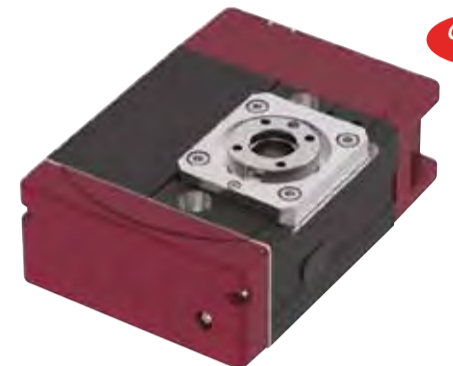
IP20

EC-RTC9

Deceleration Ratio : 1/45
Max. Torque (N·m) : 1.5
Max. Speed (deg/s) : 600

EC-RTC12

Deceleration Ratio : 1/45
Max. Torque (N·m) : 8.0
Max. Speed (deg/s) : 600



24V Pulse Motor

Incremental Encoder

**RCP2-RTBS
RCP2-RTBSL**

Deceleration Ratio : 1/30 1/45
Max. Torque (N·m) : 0.24 0.36
Max. Speed (deg/s) : 400 266



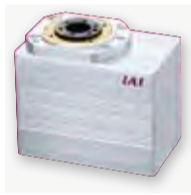
**RCP2-RTB
RCP2-RTBL**

Deceleration Ratio : 1/20 1/30
Max. Torque (N·m) : 1.1 1.7
Max. Speed (deg/s) : 600 400



**RCP2-RTBB
RCP2-RTBBL**

Deceleration Ratio : 1/20 1/30
Max. Torque (N·m) : 3 4.6
Max. Speed (deg/s) : 600 400



**RCP2-RTCS
RCP2-RTCSL**

Deceleration Ratio : 1/30 1/45
Max. Torque (N·m) : 0.24 0.36
Max. Speed (deg/s) : 400 266



Wrist Unit

24V Pulse Motor

Battery-less Absolute Encoder

	WU-S	WU-M
Body length (mm)	148	196
Maximum payload (kg)	1	2
B-axis (Wrist Swing)	±100	±105
T-axis (Wrist Rotation)	±360	±360
Maximum speed (deg/s)	600	

WU-S

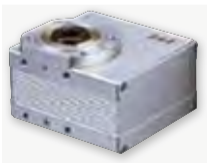


WU-M



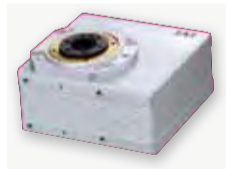
**RCP2-RTC
RCP2-RTCL**

Deceleration Ratio : 1/20 1/30
Max. Torque (N·m) : 1.1 1.7
Max. Speed (deg/s) : 600 400



**RCP2-RTCB
RCP2-RTCBL**

Deceleration Ratio : 1/20 1/30
Max. Torque (N·m) : 3 4.6
Max. Speed (deg/s) : 600 400



**Hollw Rotary Type
RCP6-RTFML**

24V Pulse Motor

Battery-less Absolute Encoder

Slim and lightweight RCP6-RTFML Rotary with large-diameter hollow shaft of Ø49, suitable for combined axes, is now available

Deceleration Ratio : 1/30
Max. Torque (N·m) : 5.2
Max. Speed (deg/s) : 800



Coming soon

**Rotary Chuck Type
RCP6-RTCK**

24V Pulse Motor

Battery-less Absolute Encoder

- Multi-point positioning of the rotary part
- Compact size
- Highly flexible installation

Rotation Operation Range (deg)	within 0 to 360	
Max. Torque (N·m)	0.29	0.36
Max. Rotation Speed (deg/s)	1800	
Max. Grip Force [N]	10 (5 per side)	20 (10 per side)

Coming soon



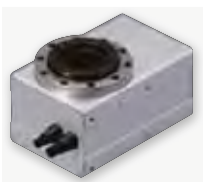
230V Servo Motor

Incremental Encoder

Absolute Encoder

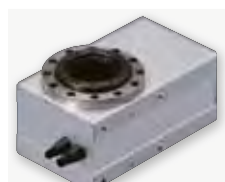
**RCS2-RTC8L
RCS2-RTC8HL**

Motor Output (W) : 20 30
Deceleration Ratio : 1/24 1/15 1/24
Max. Torque (N·m) : 0.55 0.53 0.85
Max. Speed (mm/s) : 750 1200 750



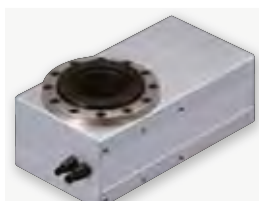
RCS2-RTC10L

Motor Output (W) : 60
Deceleration Ratio : 1/15 1/24
Max. Torque (N·m) : 1.7 2.8
Max. Speed (mm/s) : 1200 750



RCS2-RTC12L

Deceleration Ratio : 1/18 1/30
Max. Torque (N·m) : 5.6 8.2
Max. Speed (deg/s) : 800 600



RS-30

Deceleration Ratio : 1/50 1/100
Max. Torque (N·m) : 6.6 13.3
Max. Speed (deg/s) : 360 180



RS-60

Deceleration Ratio : 1/50 1/100
Max. Torque (N·m) : 11.17 22.28
Max. Speed (deg/s) : 360 180



Direct Drive Motor

Index Absolute Encoder

Multi-Rotation Absolute Encoder

Coming soon

DDA-LT18C

Motor Output (W) : 200
Max. Torque (N·m) : 25.2 (17 bit /20 bit)
Max. Speed (mm/s) : 1800 (17 bit /20 bit)



DDA-LT18C-B

Motor Output (W) : 200
Max. Torque (N·m) : 25.2 (17 bit /20 bit)
Max. Speed (mm/s) : 1800 (17 bit /20 bit)



DDA-LH18C

Motor Output (W) : 600
Max. Torque (N·m) : 75 (17 bit /20 bit)
Max. Speed (mm/s) : 1440 (17 bit /20 bit)



DDA-LH18C-B

Motor Output (W) : 600
Max. Torque (N·m) : 75 (17 bit /20 bit)
Max. Speed (mm/s) : 1440 (17 bit /20 bit)



Cleanroom Type

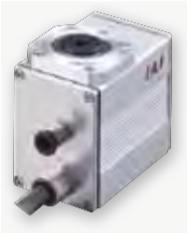
24V Pulse Motor

Incremental Encoder

ISO Cleanliness Class
4

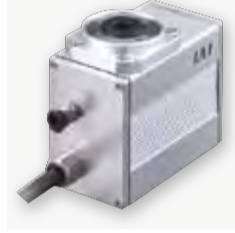
**RCP2CR-RTBS
RCP2CR-RTBSL**

Deceleration Ratio : 1/30 1/45
Max. Torque (N·m) : 0.24 0.36
Max. Speed (deg/s) : 400 266



**RCP2CR-RTB
RCP2CR-RTBL**

Deceleration Ratio : 1/20 1/30
Max. Torque (N·m) : 1.1 1.7
Max. Speed (deg/s) : 600 400



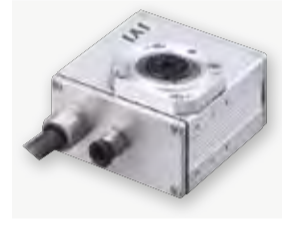
**RCP2CR-RTBB
RCP2CR-RTBBL**

Deceleration Ratio : 1/20 1/30
Max. Torque (N·m) : 3.0 4.6
Max. Speed (deg/s) : 600 400



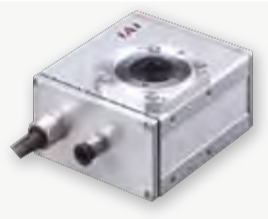
**RCP2CR-RTCS
RCP2CR-RTCSL**

Deceleration Ratio : 1/30 1/45
Max. Torque (N·m) : 0.24 0.36
Max. Speed (deg/s) : 400 266



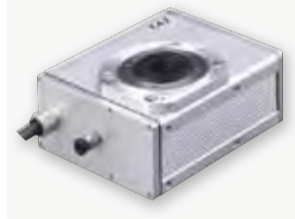
**RCP2CR-RTC
RCP2CR-RTCL**

Deceleration Ratio : 1/20 1/30
Max. Torque (N·m) : 1.1 1.7
Max. Speed (deg/s) : 600 400



**RCP2CR-RTCB
RCP2CR-RTCBL**

Deceleration Ratio : 1/20 1/30
Max. Torque (N·m) : 3.0 4.6
Max. Speed (deg/s) : 600 400



Index Absolute Encoder

Multi-Rotation Absolute Encoder

ISO Cleanliness Class
2.5
(ISO14644-1)

DDACR-LT18C

Motor Output (W) : 200
Max. Torque (N·m) : 25.2 (17 bit /20 bit)
Max. Speed (deg/s) : 1800 (17 bit /20 bit)

DDACR-LH18C

Motor Output (W) : 600
Max. Torque (N·m) : 75 (17 bit /20 bit)
Max. Speed (deg/s) : 1440 (17 bit /20 bit)

Coming soon



Dust/Splash-proof Type

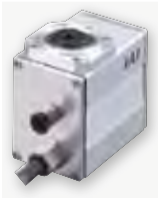
24V Pulse Motor

Incremental Encoder

IP54

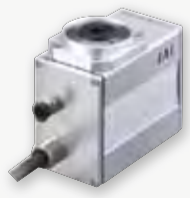
**RCP2W-RTBS
RCP2W-RTBSL**

Deceleration Ratio : 1/30 1/45
Max. Torque (N·m) : 0.24 0.36
Max. Speed (deg/s) : 400 266



**RCP2W-RTB
RCP2W-RTBL**

Deceleration Ratio : 1/20 1/30
Max. Torque (N·m) : 1.1 1.7
Max. Speed (deg/s) : 600 400



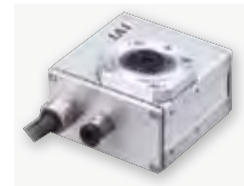
RCP2W-RTBB/RCP2W-RTBBL

Deceleration Ratio : 1/20 1/30
Max. Torque (N·m) : 3.0 4.6
Max. Speed (deg/s) : 600 400



RCP2W-RTCS/RCP2W-RTCSL

Deceleration Ratio : 1/30 1/45
Max. Torque (N·m) : 0.24 0.36
Max. Speed (deg/s) : 400 266



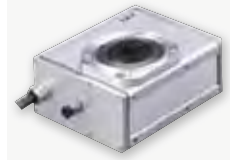
**RCP2W-RTC
RCP2W-RTCL**

Deceleration Ratio : 1/20 1/30
Max. Torque (N·m) : 1.1 1.7
Max. Speed (deg/s) : 600 400



**RCP2W-RTCB
RCP2W-RTCBL**

Deceleration Ratio : 1/20 1/30
Max. Torque (N·m) : 3.0 4.6
Max. Speed (deg/s) : 600 400



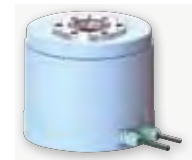
Index Absolute Encoder

Multi-Rotation Absolute Encoder

DDW-LH18C

Max. Torque (N·m) : 67 (17 bit /20 bit)
Max. Speed (deg/s) : 1440 (17 bit /20 bit)

Coming soon



I = Incremental **WA** = Batteryless absolute **A** = Absolute

Description	Model Name	External view	External dimensions (mm) (L x W x H)	Mass (Weight)	Motor type (W)	Operation range (deg)	Allowable dynamic thrust load (N)	Allowable load moment (N·m)	Deceleration ratio	Maximum Torque (N·m)	Maximum speed (deg/s)	Encoder	Positioning repeatability (deg)
ELECYLINDER	EC-RTC9		with brake 155 x 90 x 47 without brake 133 x 90 x 47	with brake 0.99 kg without brake 0.86 kg	24V DC pulse motor	330	50	5	1/45	1.5	600	I	±0.05
	EC-RTC12		with brake 204.5 x 117 x 61 without brake 166.5 x 117 x 61	with brake 1.90 kg without brake 1.74 kg									400
Pulse Motor 24V	RCP2-RTBS RCP2-RTBSL		72 x 46 x 70	0.52 kg	24V DC pulse motor	330 (RTBS)	30	3.6	1/30	0.24	400	I	±0.05
	RCP2-RTB RCP2-RTBL		88 x 42 x 83.5	with brake 1.2 kg without brake 0.86 kg									330 (RTB)
	RCP2-RTBB RCP2-RTBBL		124 x 76 x 107	with brake 3.0 kg without brake 2.3 kg	24V DC pulse motor	330 (RTBB)	200	17.7	1/20	3	600	I	±0.01
	RCP2-RTCSL RCP2-RTCS		72 x 68 x 45	0.48 kg									330 (RTCS)
	RCP2-RTC RCP2-RTCL		88 x 81 x 55	with brake 1.3 kg without brake 0.92 kg	24V DC pulse motor	330 (RTC)	50	3.9	1/20	1.1	600	I	±0.01
	RCP2-RTCB RCP2-RTCBL		124 x 114 x 68	with brake 2.9 kg without brake 2.2 kg									330 (RTCB)
	RCP6-RTFML		MT: 224.5 x 90 x 169.5 MR: 171.5 x 140 x 169.5	with brake 2.9 kg without brake 2.2 kg	24V DC pulse motor	±180	600	30	1/30	5.2	800	WA	±0.01
	Servo Motor 230V	RCS2-RTCSL (Small standard)		135 x 85 x 77	8L-with brake: 2.1 kg 8L-without brake: 2.3 kg	230V AC servo motor	360	400	5	1/24	0.55	750	I A
RCS2-RTCSL (Small-high power)			150 x 85 x 77	8HL-with brake: 2.4 kg 8HL-without brake: 2.2 kg	1/15								
RCS2-RTC10L (Medium)			171 x 99 x 86	with brake 3.5 kg without brake 3.3 kg	230V AC servo motor	360	600	10	1/15	1.7	1200	I A	±0.005
RCS2-RTC12L (Large)			233 x 123 x 92	with brake 6.5 kg without brake 6.2 kg									1/24
RS-30			112 x 64.5 x 207	2.0 kg	230V AC servo motor	360	392	9.8	1/50	6.6	360	I A	±0.028
RS-60			112 x 83 x 250	3.2 kg									11.8
Cleanroom	RCP2CR-RTBS RCP2CR-RTBSL		78 x 45 x 70	0.6 kg	24V DC pulse motor	330 (RTBS)	30	3.6	1/30	0.24	400	I	±0.05
	RCP2CR-RTB RCP2CR-RTBL		95 x 50 x 83.5	with brake 1.3 kg without brake 0.96 kg									330 (RTB)
	RCP2CR-RTBB RCP2CR-RTBBL		132 x 76 x 107	with brake 3.2 kg without brake 2.5 kg	24V DC pulse motor	330 (RTBB)	20	17.7	1/20	3	600	I	±0.01
	RCP2CR-RTCSL RCP2CR-RTCS		78 x 68 x 45	0.54 kg									330 (RTCS)
	RCP2CR-RTC RCP2CR-RTCL		95 x 81 x 55	with brake 1.42 kg without brake 1.04 kg	24V DC pulse motor	330 (RTC)	50	3.9	1/20	1.1	600	I	±0.01
	RCP2CR-RTCB RCP2CR-RTCBL		132 x 114 x 68	with brake 3.1 kg without brake 2.4 kg									330 (RTCB)
Dust-proof/splash-proof	RCP2W-RTBS RCP2W-RTBSL		78 x 45 x 70	0.6 kg	24V DC pulse motor	330 (RTBS)	30	3.6	1/30	0.24	400	I	±0.05
	RCP2W-RTB RCP2W-RTBL		95 x 50 x 83.5	with brake 1.3 kg without brake 0.96 kg									330 (RTB)
	RCP2W-RTBB RCP2W-RTBBL		132 x 76 x 107	with brake 3.2 kg without brake 2.5 kg	24V DC pulse motor	330 (RTBB)	200	17.7	1/20	3	600	I	±0.01
	RCP2W-RTCSL RCP2W-RTCS		78 x 68 x 45	0.54 kg									330 (RTCS)
	RCP2W-RTC RCP2W-RTCL		95 x 81 x 55	with brake 1.42 kg without brake 1.04 kg	24V DC pulse motor	330 (RTC)	50	3.9	1/20	1.1	600	I	±0.01
	RCP2W-RTCB RCP2W-RTCBL		132 x 114 x 68	with brake 3.1 kg without brake 2.4 kg									330 (RTCB)

AI = Index absolute **AM** = Multi-rotation absolute

Description	Model Name	External view	External dimensions (mm) (L x W x H)	Mass (Weight)	Motor type (W)	Allowable load moment (N·m)	Encoder type	Encoder (bit)	Operation Range (deg/s)	Maximum Torque (N·m)	Maximum speed (deg/s)	Positioning repeatability
Direct Drive Motor	DDA-LT18C		φ180 x 70	5.8 kg	Direct Motor Drive (200 W)	80	AI	Standard (17bit)	0-359.99	25.2	1800	±19.8sec. (±0.0055deg.)
								High resolution (20bit)				±3.7sec. (±0.00103deg.)
	DDA-LT18C-B (with brake)		φ180 x 118	8.7 kg	Direct Motor Drive (200 W)	80	AI	Standard (17bit)	0-359.99	25.2	1800	±19.8sec. (±0.0055deg.)
								High resolution (20bit)				±3.7sec. (±0.00103deg.)
	DDA-LH18C		φ180 x 122.8	13 kg	Direct Motor Drive (600 W)	80	AI	Standard (17bit)	0-359.99	75	1440	±19.8sec. (±0.0055deg.)
								High resolution (20bit)				±3.7sec. (±0.00103deg.)
DDA-LH18C-B (with brake)		φ180 x 187.8	17.4 kg	Direct Motor Drive (600 W)	80	AI	Standard (17bit)	0-359.99	75	1440	±19.8sec. (±0.0055deg.)	
							High resolution (20bit)				±3.7sec. (±0.00103deg.)	
DDW Dust-proof/splashproof	DDW-LH18C		195 x 195 x 160.5	18.8 kg	Direct Motor Drive (600 W)	80	AI AM	Standard (17bit) High resolution (20bit)	0-359.99	67	1440	17bit: ±19.8 (±0.0055deg.) 20bit: ±3.7 (±0.00103deg.)
DDA cleanroom	DDACR-LT18C		φ180 x 70	5.8 kg	Direct Motor Drive (200 W)	80	AI	Standard (17bit)	0-359.99	25.2	1800	±19.8sec. (±0.0055deg.)
								High resolution (20bit)				±3.7sec. (±0.00103deg.)
	DDACR-LH18C		φ180 x 122.8	13 kg	Direct Motor Drive (600 W)	80	AI	Standard (17bit)	0-359.99	75	1440	±19.8sec. (±0.0055deg.)
								High resolution (20bit)				±3.7sec. (±0.00103deg.)

Model Name	External view	Axis configuration	External Dimension (mm) (L x W x H)	Mass (Weight)	Deceleration ratio	Positioning repeatability	Max. Torque (N·m)	Max. allowable moment of Inertia (kgm ²)	Operation Range	Max load weight (kg)	Brake retaining torque (N·m)	Motor type
RCP6-RTFML		B-axis (wrist swing)	26 x 20 X 68	with brake 2.2kg without brake 2.1kg	1/30	±0.01	5.2	0.08	±180 deg.	1kg	4.2	42□ pulse motor

Model Name	External view	Axis configuration	External Dimension (mm) (L x W x H)	Mass (Weight)	Operation Range	Max. Torque (N·m)	Max. allowable moment of Inertia (kgm ²)	Max load weight (kg)	Independent operation speed (deg/s)	Simultaneous operation speed of the B and T axis (deg/s)	Max. operation without load torque (deg/s ²)	Max. operation with load torque (deg/s ²)	Motor type
WU-S		B-axis (wrist swing)	26 x 20 X 68	1.6kg	±100 deg.	0.65	0.0085	1kg	750	600	0.7G (6865)	0.3G (2942)	28□ pulse motor
		T-axis (wrist rotation)											
WU-M		B-axis (wrist swing)	26 x 20 X 68	2.8kg	±105 deg.	1.65	0.015	2kg	900	600	0.7G (6865)	0.3G (2942)	28□ pulse motor
		T-axis (wrist rotation)											

Model Name	External view	Type	External Dimension (mm) (L x W x H)	Mass (Weight)	Rotation operation range (deg)	Max. Rotation speed (deg/s)	Max. Torque (N·m)	Allowable moment of inertia (kgm ²)	Gripper stroke (mm)	Max. Grip force (N)	Grip operation time (S)	Grip operation frequency (CRM)
RCP6-RTCKSPE/ RTCKSPI		Parallel	with brake 79.5 x 40 X 208.5 without brake 79.5 x 40 X 183.5	with brake 0.73kg without brake 0.67kg	0-360	1800	0.29	0.00023	10 (5 per side)	10 (5 per side)	0.03 or less	120
RCP6-RTCKSPE/ RTCKSRI		Side-mounted	with brake 79.5 x 40 X 125.5 without brake 79.5 x 40 X 100.5	with brake 0.74kg without brake 0.68kg								
RCP6-RTCKMPE/ RTCKMPI		Parallel	with brake 85.5 x 48 X 222.5 without brake 85.5 x 48 X 197.5	with brake 0.94kg without brake 0.88kg								
RCP6-RTCKMPE/ RTCKMRI		Side-mounted	with brake 85.5 x 48 X 128.5 without brake 85.5 x 48 X 103.5	with brake 0.94kg without brake 0.88kg								