

# FOOT OPERATED PEDAL ELECTRICAL AND PNEUMATIC

## SERIES 3 AND SERIES 2

Series 3: G1/4, 5/2-way - NC / NO contacts  
Series 2: M5; 4/2 tube; 3/2-way NC



The pedals can be supplied in either a pneumatic or electrical foot operated version. The pneumatic type is available with a 5/2 valve and G1/4 front ports, which allow the fittings and silencers to be assembled conveniently on the front face. A 3/2 operation can be obtained by closing an outlet port.  
The electrical type is available with a single-pole changeover contact microswitch and a front wire outlet (PG9).

The pedal can be operated as bistable or monostable, by switching the selector placed under the small red protection flap, as shown in the drawing.

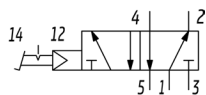
### General Data

Valve group	5/2, 3/2 NC way/pos.
Materials	Series 3: alluminium body - stainless steel spool - NBR seals - plastic casing Series 2: alluminium body - OT58 poppet - NBR seals.
Ports	Series 3: G1/4 gas Series 2: M5; tube 4/2.
Environmental temperature	0°C ÷ 50 °C (with dry air at - 10°C)
Medium temperature	0°C ÷ 50 °C
Construction	Spool-type
Cable entry	By means of wire PG9
Protection class	IP20
Fluid	Filtered air, without lubrication. If lubricated air is used, it is recommended to use ISO VG32 oil. Once applied the lubrication should never be interrupted.

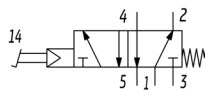
## FOOT OPERATED PEDAL ELECTRICAL AND PNEUMATIC SERIES 3 AND SERIES 2 - DIMENSIONS

### Pneumatic foot operated pedal Series 3

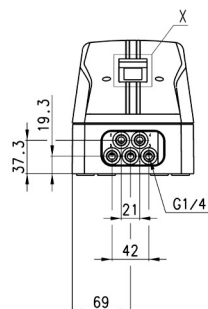
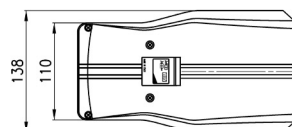
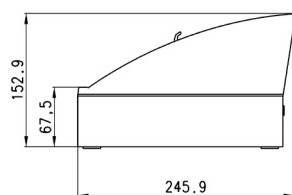
Actuating force at 6 bar = 17N  
Operating pressure = 2,5 ÷ 8 bar  
Flow rate = 650NL/min.



VN18



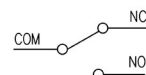
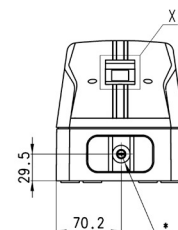
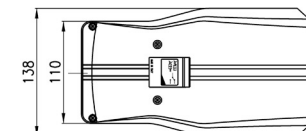
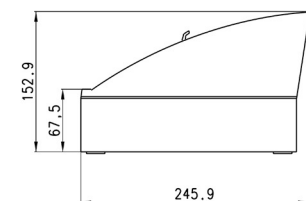
VN19



Mod.	Symbol
354N-925	VN18 - VN19

### Electrical foot operated pedal Series 3

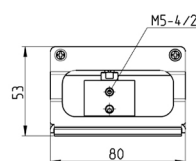
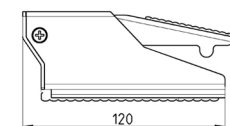
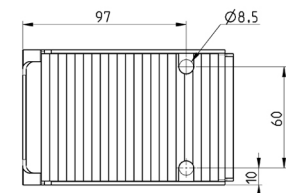
6



Mod.
3E2-925

### Pneumatic foot operated pedal Series 2

Operating pressure = 2 ÷ 8 bar  
Flow rate = 60 NL/min.



Mod.
234N-925
235N-925