



# General-use pressure gauge G49D/G59D Series

● Port size: R1/8, R1/4

JIS symbol



## Specifications

Item	G49D	G59D	
Working fluid	Liquid or gas (non-corrosive)		
Fluid temperature °C	5 (41°F) to 60 (140°F)		
Ambient temperature °C	5 (41°F) to 60 (140°F)		
Accuracy *1	Full scale ±3%		
Shape	DT type (rear side screw, stock section square)		
Display size	ø42	ø52	
Material	Stock/Bourdon tube	Copper alloy *2	
	Housing	Steel plate + chrome plating	
	Lens	Glass	
Pressure range MPa	0 (≈0 psi, 0 bar) to 0.2 (≈29 psi, 2 bar)		
	0 (≈0 psi, 0 bar) to 0.4 (≈58 psi, 4 bar)		
	0 (≈0 psi, 0 bar) to 1.0 (≈150 psi, 10 bar)		
	0 (≈0 psi, 0 bar) to 2.0 (≈290 psi, 20 bar)		
Port size	R	1/8, 1/4	
Weight	g	86	115

\*1: The guaranteed indicator accuracy temperature is 20±15°C.

\*2: The material of the Bourdon tube is phosphor bronze only for pressure indication "P20."

**Clean-room specifications** (Catalog No. CB-033SA)

● Anti-dust generation structure for use in cleanrooms

**G49D** - ..... - **P9\***

**G59D** - ..... - **P9\***

**Copper and PTFE free specifications** (Page 320)

**G49D** - ..... - **P6**

**G59D** - ..... - **P6**

**Specifications for rechargeable battery**

(Catalog No. CC-1226A)

● Design compatible with rechargeable battery manufacturing process

**G49D** - ..... - **P4**

**G59D** - ..... - **P4**

## How to order

**G49D - 6 - P02**

A Model No.

B Port size

C Pressure display

Code	Description
<b>A Model No.</b>	
G49D	
G59D	
<b>B Port size *2</b>	
6	R 1/8
8	R 1/4
<b>C Pressure display [MPa] *1</b>	
P02	0 to 0.2
P04	0 to 0.4
P10	0 to 1.0
P20	0 to 2.0

**! Precautions for model No. selection**

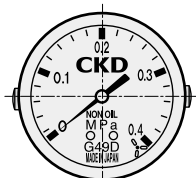
\*1: Displays other than an MPa display are made to order.

\*2: NPT screws are available as made to order.

## Dimensions



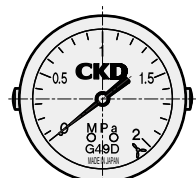
Pressure display: P02



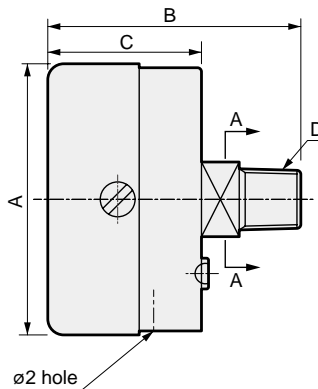
Pressure display: P04



Pressure display: P10



Pressure display: P20



**Cross section A-A**

Model No.	A	B	C	D	E
G49D-6	ø43.5	40.5	24.5	R 1/8	12
G49D-8	ø43.5	44	24.5	R 1/4	14
G59D-6	ø52	44.5	28	R 1/8	14
G59D-8	ø52	46.5	28	R 1/4	14
G49D-6-P6	ø42.8	43.5	27.5	R 1/8	12
G59D-8-P6	ø52	50.5	26.5	R 1/4	14

F.R.L.  
F.R.  
F (Filtr)  
R (Reg)  
L (Lub)  
Drain Separ  
Mech Press SW  
Res press exh valve  
SlowStart  
Anti-bac/Bac-remove Filtr  
Film Resist FR  
Oil-ProhR  
Med Press FR  
No Cu/ PTFE FRL  
Outdrs FRL  
Adapter Joiner  
Press Gauge  
CompFRL  
LgFRL  
PrecsR  
VacF/R  
Clean FR  
ElecPneuR  
AirBoost  
Speed Ctrl  
Silncr  
CheckV/ other  
Fit/Tube  
Nozzle  
Air Unit  
PresCompn  
Electro Press SW  
ContactSW  
AirSens  
PresSW Cool  
Air Flo Sens/Ctrl  
WaterRISens  
TotAirSys (Total Air)  
TotAirSys (Gamma)  
Gas generator  
RefrDry  
DesicDry  
HiPolymDry  
MainFiltr  
Dischrg etc  
Ending



General purpose pressure gauge for clean room

# G49D-P70-P9\* G59D-P70-P9\* Series

● Port size: R1/8, R1/4

JIS symbol



## Specifications

Item	G49D-P70/P9*	G59D-P70/P9*
Working fluid	Compressed air, N <sub>2</sub>	
Fluid temperature °C	5 (41°F) to 60 (140°F)	
Ambient temperature °C	5 (41°F) to 60 (140°F)	
Accuracy *1	Full scale ±3%	
Shape	DT type (rear side screw, stock section square)	
Display system	ø43	ø52
Material	Bourdon tube	P90,P94:SUS316 P70: Copper alloy
	Stock	P90, P94: SUS14 (SUS316 equivalent) P70: Copper alloy (nickel plating)
	Housing	Steel (chrome plating)
	Lens	Glass
Pressure range MPa	0 (≈0 psi, 0 bar) to 0.2 (≈29 psi, 2 bar) 0 (≈0 psi, 0 bar) to 0.4 (≈58 psi, 4 bar) 0 (≈0 psi, 0 bar) to 1.0 (≈150 psi, 10 bar)	
Port size R	1/8	1/4
Weight g	90	140

\*1: The guaranteed indicator accuracy temperature is 20±15°C.

## How to order

**G49D - 6 - P04 - P90**

**A** Model No.

**B** Port size

**C** Pressure display

**D** Clean-room specifications

### ⚠ Precautions for model No. selection

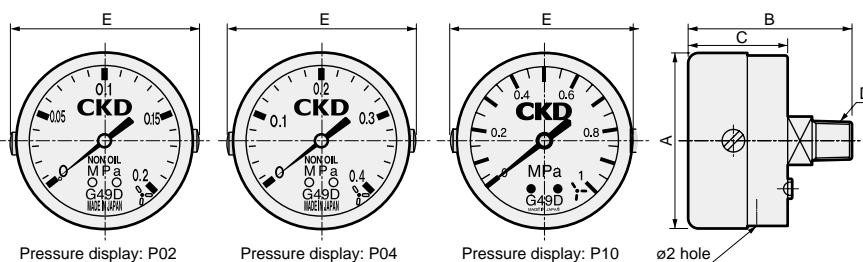
\*1: Contact CKD for indications other than MPa.

\*2: Contact CKD when ordering NPT thread.

Code	Description			
<b>A Model No.</b>				
G49D				
G59D				
<b>B Port size *2</b>				
6	R1/8 (G49D only)			
8	R1/4 (G59D only)			
<b>C Pressure display [MPa] *1</b>				
P02	0 to 0.2			
P04	0 to 0.4			
P10	0 to 1.0			
<b>D Clean-room specifications</b>				
	Material	Oil prohib.specs	Assembly	Packaging
P70	Copper alloy (nickel plating)	Oil-prohibited/water free	General environment	Clean packaging
P90	Stainless steel	Oil-prohibited/water free	Clean assembly	Clean packaging
P94	Stainless steel	Oil-prohibited/water free	General environment	Clean packaging

P94 prohibits the use of copper-based, silicon-based, and halogen-based materials (fluorine, chlorine, bromine).

## Dimensions



Model No.	A	B	C	D	E
G49D-6-P02-P04-P10	ø43	43.5	27.5	R 1/8	46.5
G59D-8-P02-P04-P10	ø52	50.5	27	R 1/4	55.5
G49D-6-P02-P04-P10	ø43	43.5	27.5	R 1/8	46.5
G59D-8-P02-P04-P10	ø52	50.5	26.5	R 1/4	55.5