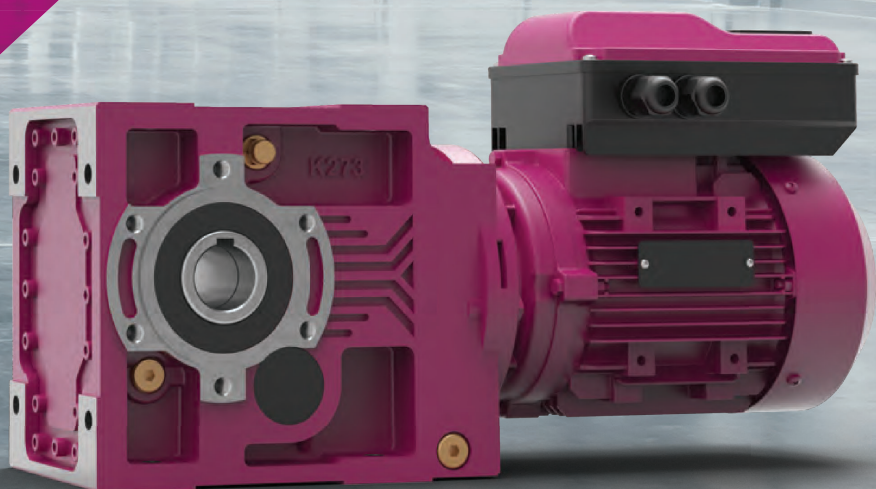




THE POWER IS
UNDER **YOUR CONTROL**

▼
www.yr.com.tr





GENERAL INDUSTRIAL GEARBOXES

M Series

Foot Mounted Helical Gearboxes

Torque Range [Nm]	50 - 18.000
Power Range [kW]	0,12 - 160
Speed Range [rpm]	0,1 - 780



N Series

Flange-Mounted Helical Gearboxes

Torque Range [Nm]	50 - 18.000
Power Range [kW]	0,12 - 160
Speed Range [rpm]	0,1 - 780



D Series

Helical Geared Hollow Shaft Gearboxes

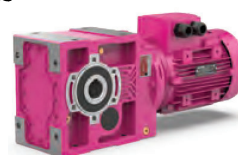
Torque Range [Nm]	130 - 18.000
Power Range [kW]	0,12 - 160
Speed Range [rpm]	0,1 - 580



K Series

Bevel Helical Geared Gearboxes

Torque Range [Nm]	80 - 20.000
Power Range [kW]	0,12 - 160
Speed Range [rpm]	0,1 - 460



E Series

Worm Gearboxes

Torque Range [Nm]	5 - 1.000
Power Range [kW]	0,06 - 7,5
Speed Range [rpm]	0,2 - 260



P Series

Planetary Gearboxes, Flange-Mounted

Torque Range [Nm]	1.000 - 135.000
Power Range [kW]	0,37 - 90
Speed Range [rpm]	0,1 - 410



R Series

Planetary Gearboxes, Foot-Mounted

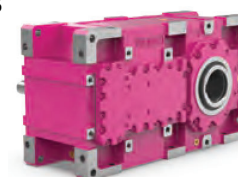
Torque Range [Nm]	1.000 - 135.000
Power Range [kW]	0,37 - 90
Speed Range [rpm]	0,1 - 410



H Series

Industrial Helical-Geared Units

Ratio Range	5,33 - 420
Torque Range [Nm]	4.850 - 470.000
Speed Range [rpm]	0,1 - 263



B Series

Industrial Helical-Bevel Gear Units

Ratio Range	9,78 - 430
Torque Range [Nm]	4.850 - 345.000
Speed Range [rpm]	0,1 - 140



/// SPECIAL APPLICATION GEARBOXES

V Series

Hoist Drum Drive Units

Ratio Range	23,58 – 233,77
Load [Tons]	0,5 - 75
Speed Range [rpm]	0,37 - 90



T Series

Conveyor Gear Units

Ratio Range	5 - 30
Torque Range [Nm]	200 - 18.000
Speed Range [rpm]	30 - 600



DRB Series

Agitator-Drywell Gearboxes

Torque Range [Nm]	600 – 18.000
Power Range [kW]	0,37 - 160
Speed Range [rpm]	0,1 - 580



KRB Series

Agitator-Drywell Gearboxes

Torque Range [Nm]	600 – 20.000
Power Range [kW]	0,37 - 160
Speed Range [rpm]	0,1 - 460



NRB Series

Agitator Gearboxes

Torque Range [Nm]	280 – 18.000
Power Range [kW]	0,12 - 160
Speed Range [rpm]	0,1 - 414



KR Series

Sawing Machine Gearboxes

Torque Range [Nm]	140 – 15.000
Power Range [kW]	0,12 - 160
Speed Range [rpm]	10 - 227



HTE Series

Extruder Gearboxes

Ratio Range	5,33 - 420
Torque Range [Nm]	4.850 – 165.000
Speed Range [rpm]	0,1 - 263



BTY Series

Bucket Elevator Gearboxes

Ratio Range	20 - 70
Torque Range [Nm]	4.850 – 165.000
Speed Range [rpm]	20 - 70



PF Series

Cement Mixer Gearboxes

Ratio Range	11 - 28
Torque Range [Nm]	9.800 - 21.700
Speed Range [rpm]	50 - 150



PVR Series

Wind Turbines Gearboxes

Ratio	184,31
Nominal Torque [Nm]	11.000
Static Torque [Nm]	22.000



VARIABLE SPEED DRIVES

YB 1000

Basic Series



- Power Rate: Up to 22kW
- Supply: 1 Phase 230V (170..240V)
- Supply: 3 Phase 400V (330..440V)
- Auto identification
- Simple to use, user friendly oriented
- Built-in PID Control
- Jogging function
- IP20 Protection class
- V/F Control and torque boost
- Multi-functional I/O
- Usable under heavy duties (%150 for 60s with constant torque)
- RS485 (MODBUS) Communication

YA 2000

Advanced Series



- Power Rate: Up to 450kW
- Supply: 1 Phase 230V +/- %15
- Supply: 3 Phase 400V +/- %15
- Auto identification
- Simple to use, user friendly oriented
- PID Process Control
- Jogging function
- IP20 Protection class
- SLVC - Sensorless Vector Control
- Multi-functional I/O
- Usable under Heavy Duties (%150 for 60s with Constant Torque)
- RS485 (MODBUS) Communication
- Special functions for Crane Applications

YMS

Soft Starters



- Power: Up to 400kW
- Supply: 3-Phase 400V
- Especially Simplicity
- Jogging
- IP2 -Protection Level
- Allowed start times: Less than 20 times in an hour(for normal loads)
- Built in By-Pass Contactor
- External 230 VAC Control Supply above 90 kW
- Soft Stop Function
- Analog Output (4..20mA)
- RS485 (MODBUS) Communication

YE 8000

Expert Series



- Power Rate: Up to 630kW
- Supply: 1 Phase 230V +/- %15
- Supply: 3 Phase 400V +/- %15
- Auto identification
- Simple to use, user friendly oriented
- Permanent magnet motor control
- RS485 (MODBUS) Communication
- Multi-Functional I/O
- PID Process Control
- Jogging function
- SLVC - Open Loop Vector Control
- Closed Loop Vector Control (with Encoder)
- Coated PCBs
- Sized for Heavy Duty Use (3s %180, 60s %150)

YI 1000

Integrated Series



- Power Rating: Up to 2.2kW
- Supply: Single-Phase 230V +/- %15
- IP65 Protection class
- Motor-Integrated Building
- V/f Control
- Coated PCBs
- MODBUS Communication

YP 65

Wall Mounted

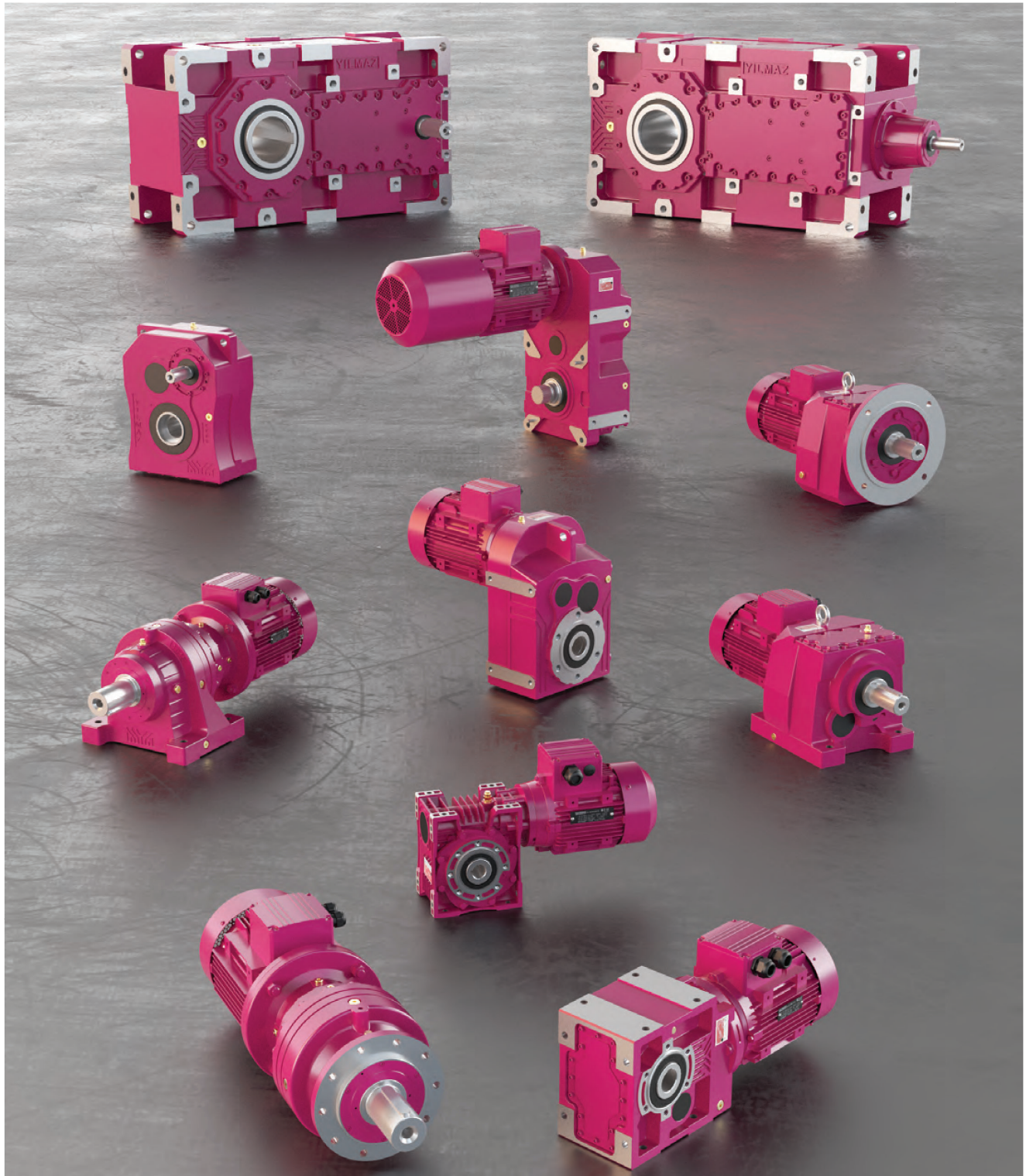


- Power Rate: Up to 30kW
- Supply: 1 Phase 230V +/- %15
- Supply: 3 Phase 400V +/- %15
- Simple to use, user friendly oriented
- IP65 Protection class
- Mounting with Adapter plate on motor
- RS485 (MODBUS) Communication
- Multi-Functional I/O
- PID Process Control
- Multi-Pump Application (Up to 6 Pumps)
- Equal Aging Function
- Anti-Freeze Function for Pumps
- Jogging function
- Coated PCBs
- Heavy Duty Applications (3s %180, 60s %150)

Special Application Drives



Applications	Drives Code
Compressor	YC 3000
Automatic Door	YDD
Multiple Pump	YMP



Yılmaz Redüktör Sanayi ve Ticaret A.Ş.

Atatürk Mah. Lozan Cad. No: 17, 34522 Esenyurt - İstanbul / Turkey

Tel: +90 212 886 90 00

E-Mail: yilmaz@yr.com.tr

TB0100-0422-EN

BIBUS

BIBUS s.r.o.
+420 547 125 300
www.bibus.cz



2017 - Yılmaz Automation

While adding speed control devices to gear unit, Yılmaz Redüktör start to offer complete solutions for customers.



2013 - Electric Motors

In 2013 September Yılmaz Redüktör establishes subsidiary company ELK Motors plant in Çerkezköy Tekirdağ with second plant for MES Electromechanical Casting, which will increase production capacity to 20000 tonnes per year.



2010 - Technological Investments

In 2010 Yılmaz Redüktör invests 30 new CNC Machines, loaded by robots these machines boost production speed and quality.



2002 - MES Electromechanical Casting

MES Electromechanical Casting was established with fully automated production lines. MES meets all of Yılmaz Redüktör's cast part needs.



1987 - New Gearbox Facility

Turkey's largest gearbox plant opened in İstanbul - Beylikdüzü with a 23,000 m² floor area.



1970 - First Factory

Yılmaz Redüktör buys building for casting and gearbox production which was our old sales headquarters.



1958 - First Workshop

Yılmaz Redüktör's first workshop established in İstanbul Şişhane.

In 1958 **first movement** started in a small workshop in İstanbul...

Founded in 1958, Yılmaz Reduktor quickly became Turkey's leading gearbox manufacturer, aided by consistent product quality, work discipline, strategic planning and consistent vision. Today Yılmaz Reduktor remains Turkey's leading gearbox producer and is rapidly becoming well known throughout the world. Yılmaz Reduktor uses its extensive experience to develop new products, uses the latest available production technology and continually invests in engineering to provide its customers with products that fulfil the expectations of the world market. Our products are used in many industries and our customers regard us as trusted partners.