

easyE-35 / 35i &
easyE-50 / 50i
for submerged use

Under Water Actuators

The Bansbach UW100-series of actuators are developed and tested for under water applications down to 100 m. The actuators come in stainless steel (AISI316) and have extra sealing to protect against the high water pressure.

easyE-35 / 35i Speed and Force

Gear ratio	E / 19	F / 27	G / 51	H / 71
<i>easyE-35 / 35i</i> 24VDC power supply (max. 28VDC), permanent magnet motor, 1,8ADC (2,5ADC for 35i)				
Force 24V (dyn. push and pull) [N]	300	500	1300	1900
Speed at maximum load [mm/s]	12	7,5	4	3
12VDC power supply (max. 14VDC, permanent magnet motor, 3,6ADC (4,0ADC for 35i)				
Force 12V (dyn. push and pull) [N]	300	500	1100	1900
Speed at maximum load [mm/s]	9	7,5	3,5	2,5
Maximum load is specified at 100 meter water pressure, higher forces can be expected at lower pressure				

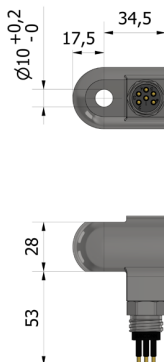
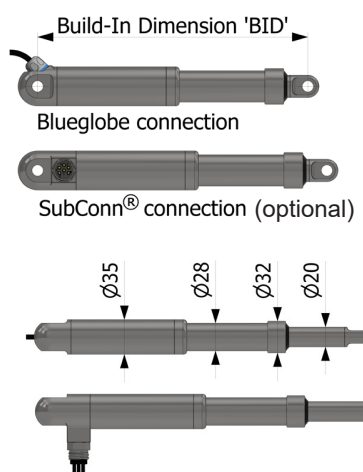
Stroke length is limited to **max. 400mm**.

Hall sensor included in all models.

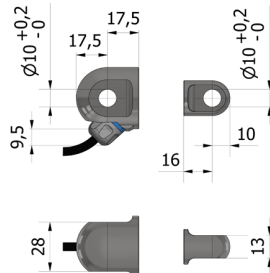
Dimensions

	Standard
Gear ratio E/19, F/27	Stroke + 201
Gear ratio G/51, H/71	Stroke + 211

Axial backlash: +/- 0.5mm, General dimensional variation: +/- 1mm



Stainless Steel
Max. static load 5400 N
SubConn® connection with 6, 8 pins
(optional)



Stainless Steel
Max. static load 5400 N
Blueglobe connection

easyE-50 / 50i

Speed and Force

Gear ratio	D / 14	E / 17	F / 24	G / 49	H / 84
<i>easyE-50 / 50i</i> 24VDC power supply (max. 28VDC), permanent magnet motor, 14-24: 8ADC, 49: 7ADC, 84: 4,5ADC					
Force 24V (dyn. push and pull) [N]	1050	1500	2400	3800	4500
Speed at maximum load [mm/s]	20	17	12	6	4
12VDC power supply (max. 14VDC), permanent magnet motor, 14-24: 16ADC, 49: 14ADC, 84: 9ADC					
Force 12V (dyn. push and pull) [N]	750	1200	1700	3800	4500
Speed at maximum load [mm/s]	14	10	6	3	3,5
Maximum load is specified at 100 meter water pressure, higher forces can be expected at lower pressure					

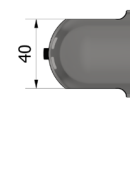
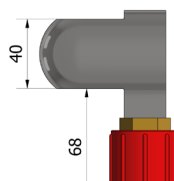
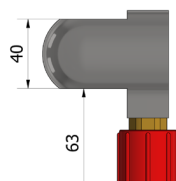
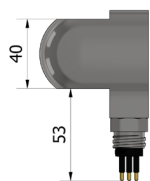
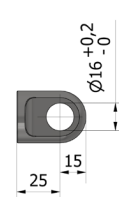
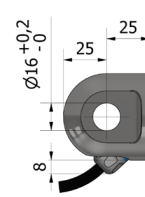
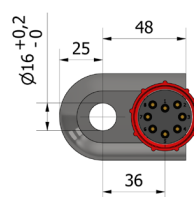
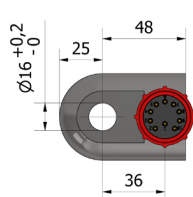
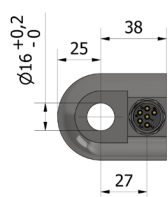
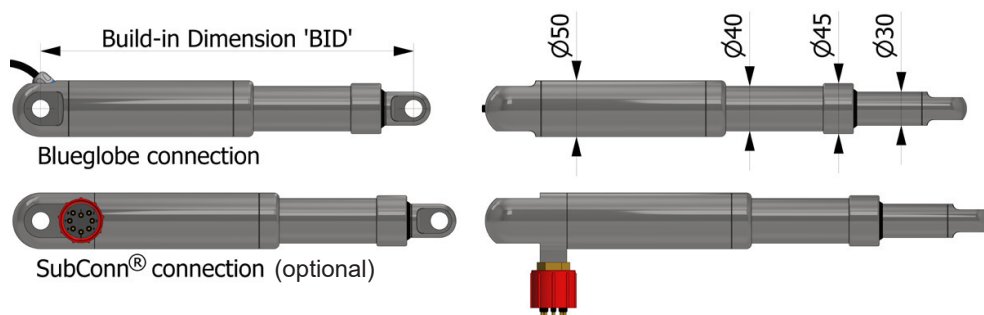
Stroke length is limited to **max. 400mm**.

Hall sensor included in all models.

Dimensions

Standard	
Gear ratio D/14, E/17, F/24	Stroke + 291
Gear ratio G/49, H/84	Stroke + 306

Axial backlash: +/- 0.5mm, General dimensional variation: +/- 1mm



Stainless Steel

Max. static load 16800 N
5 A SubConn® connection with 6, 8 pins
(optional)

Stainless Steel

Max. static load 16800 N
5 A SubConn® connection with 10 pins
(optional)

Stainless Steel

Max. static load 16800 N
10 A SubConn® connection with 6, 8, 10 pins
(optional)

Stainless Steel

Max. static load 16800 N
Blueglobe connection

General Information

- The water tightness covers the actuator including cable. Connector or open ends are not covered by this classification.

Blueglobe



SubConn (optional)



SubConn (optional)



Bansbach UW100 actuators come as standard with a blue globe cable gland rated to 10 bar at 100 Meter. This version is suitable for applications where cable and blue globe gland are mounted in such a way that the neither the cable nor the cable gland can be exposed to dynamic loads. If there is a risk that the blue globe gland and cable can be exposed to dynamic loads, then we strongly recommend choosing a Bansbach UW100 actuator with SubConn connector.

Recommendations and warnings

- Never expose the actuator to hammer strike during installation or in other situations.
- Retrofitted bushings should be pressed into the bracketborings. No hammering.
- Power supply without over-current protection can cause serious damage to the actuator at mechanical end-stop or when actuator is overloaded in another way.
- Keep piston tube clean.
- Longer cable lengths may cause voltage drop which affects the performance of the actuator.
- Function of the actuator is subject to the settings of the controller. If using your own controller please contact Bansbach.
- All specifications are for 25 °C ambient – low temperature might affect performance.
- Depending on load and application, nominal and actual stroke length may differ due to internal disc springs not being fully compressed.
- The combination of gearing and stroke can cause limitations in the use of „End limit FW“ when using the S2-30 control. See more in the datasheet for S2-30.
- The actuator is not rotationally secured.

The flyer is subject to technical alterations and printing mistakes.

Bansbach easylift GmbH

Barbarossastraße 8
D-73547 Lorch

Tel. +49 (0) 7172/9107-0
Fax +49 (0) 7172/9107-44

info@bansbach.de
www.bansbach.de

Bansbach
easylift

05/2024