

MANUALLY OPERATED CONSOLE MINIVALVES

SERIES 2

3/2 NC, NO
Ports M5, cartridge Ø4



This series of miniature valves has been especially designed to satisfy all the application requirements of the controls industry with particular attention paid to the operating characteristics required from these components:

- short operational stroke
- small dimensions.

General Data

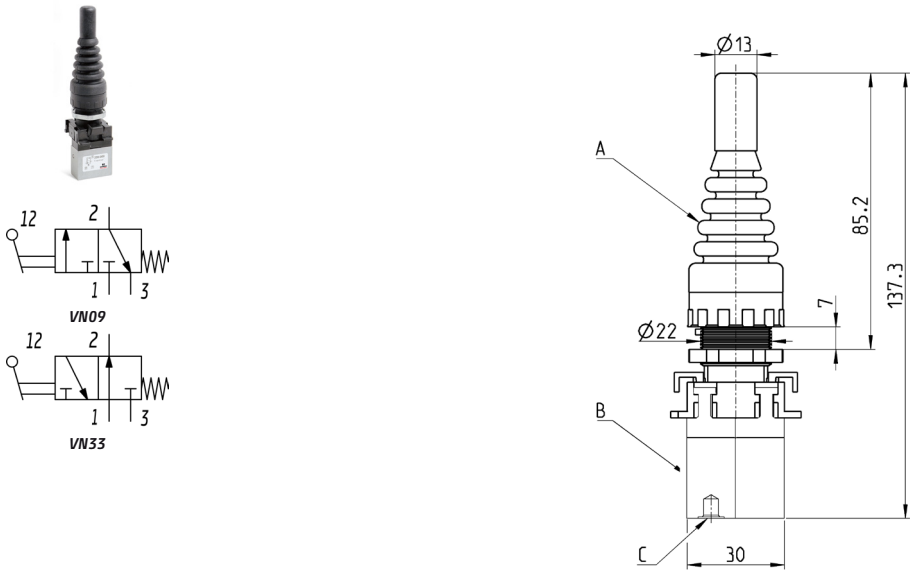
Construction	Poppet-type (closed centres)
Valve group	3/2 NC, NO 5/2 and 5/3 CO
Materials	Aluminium body, brass plunger, NBR seals
Mounting	Panel
Ports	M5 or cartridge dia. 4
Environmental temperature	0°C ÷ 60°C
Medium temperature	0°C ÷ 50°C
Operating pressure	See models

MANUALLY OPERATED CONSOLE MINIVALVES
SERIES 2 - CODING EXAMPLES

Coding Example

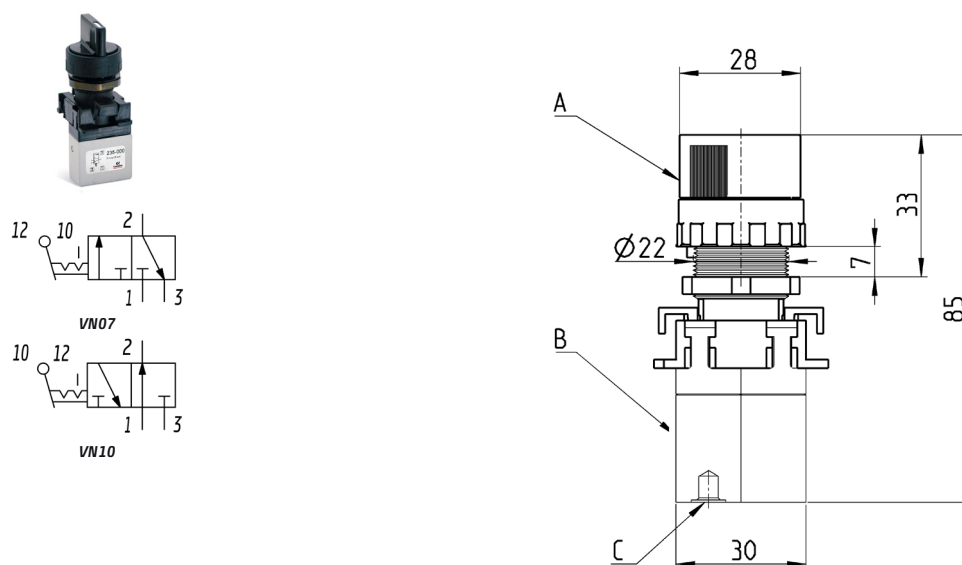
2	3	4	-	97	5
2	SERIES				
3	FUNCTION 3 = 3/2-way NC 4 = 3/2-way NO 8 = 5/3-way CO (function realized with 2x 3/2-way NC valves)				
4	PORTS 4 = Cartridge Ø4 5 = M5				
97	MODE OF OPERATION 87 = 3 position selector 89 = Push button 97 = Palm switch 90 = Joystick 99 = 2 position selector 92 = Pedal 904 = Key				
5	RESETTING 5 = Spring return 0 = Stable 2 = Latching-twist to release 54= Joystick				

Minivalves Mod. 23...905, 24...905



Mod.	Operating pressure [bar]	Flow [Nl/min]	A	B	C (Supply/port)	Symbols
234-905	2 ÷ 8	60	200-905	234-000	Ø4/2	VN09
235-905	2 ÷ 8	60	200-905	235-000	M5	VN09
244-905	2 ÷ 8	60	200-905	244-000	Ø4/2	VN33
245-905	2 ÷ 8	60	200-905	245-000	M5	VN33

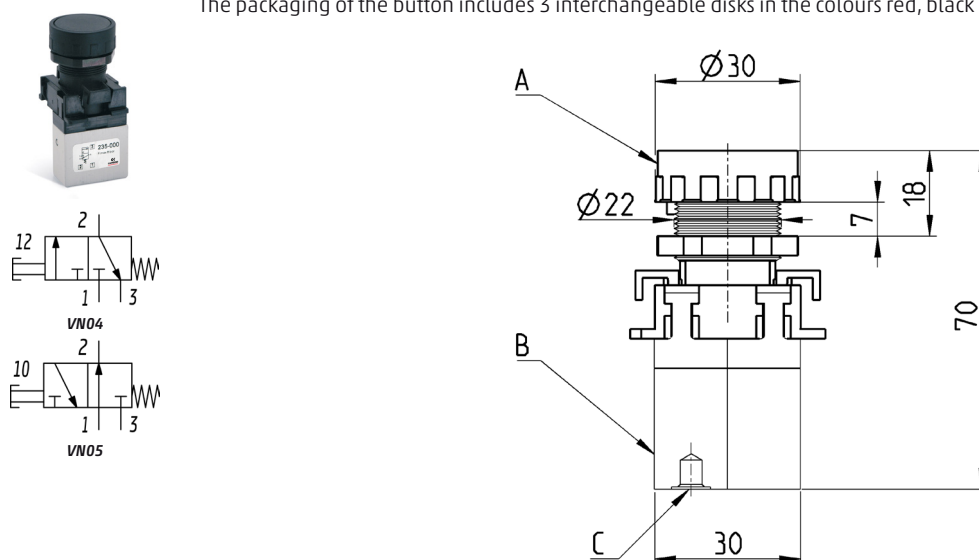
Minivalves Mod. 23...-990, 24...-990



Mod.	Operating pressure [bar]	Flow [l/min]	A	B	C (Supply/port)	Symbols
234-990	2 ÷ 8	60	200-990	234-000	Ø4/2	VN07
235-990	2 ÷ 8	60	200-990	235-000	M5	VN07
244-990	2 ÷ 8	60	200-990	244-000	Ø4/2	VN10
245-990	2 ÷ 8	60	200-990	245-000	M5	VN10

Minivalves Mod. 23...-895, 24...-895

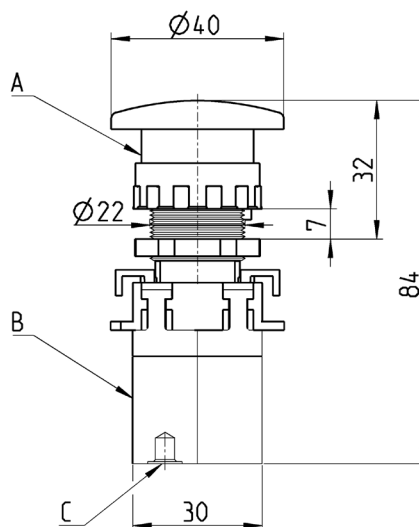
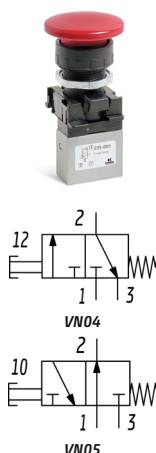
The packaging of the button includes 3 interchangeable disks in the colours red, black and green.



Mod.	Operating pressure [bar]	Flow [l/min]	Actuating force at 6 bar [N]	A	B	C (Supply/port)	Symbols
234-895	2 ÷ 8	60	7	200-895	234-000	Ø4/2	VN04
235-895	2 ÷ 8	60	7	200-895	235-000	M5	VN04
244-895	2 ÷ 8	60	7	200-895	244-000	Ø4/2	VN05
245-895	2 ÷ 8	60	7	200-895	245-000	M5	VN05

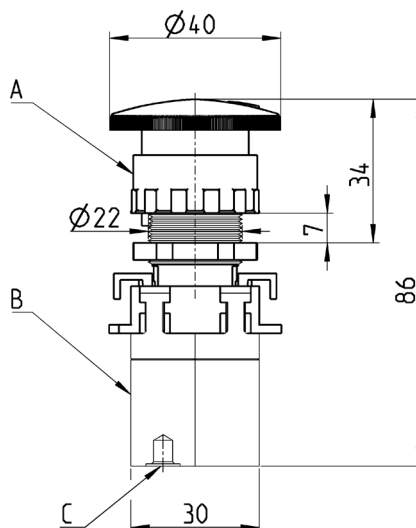
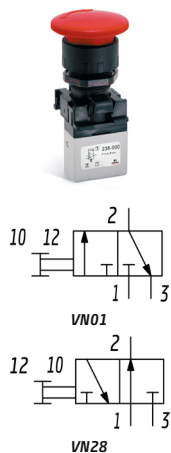
MANUALLY OPERATED CONSOLE MINIVALVES
SERIES 2 - DIMENSIONS

Minivalves Mod. 23...-975, 24...-975



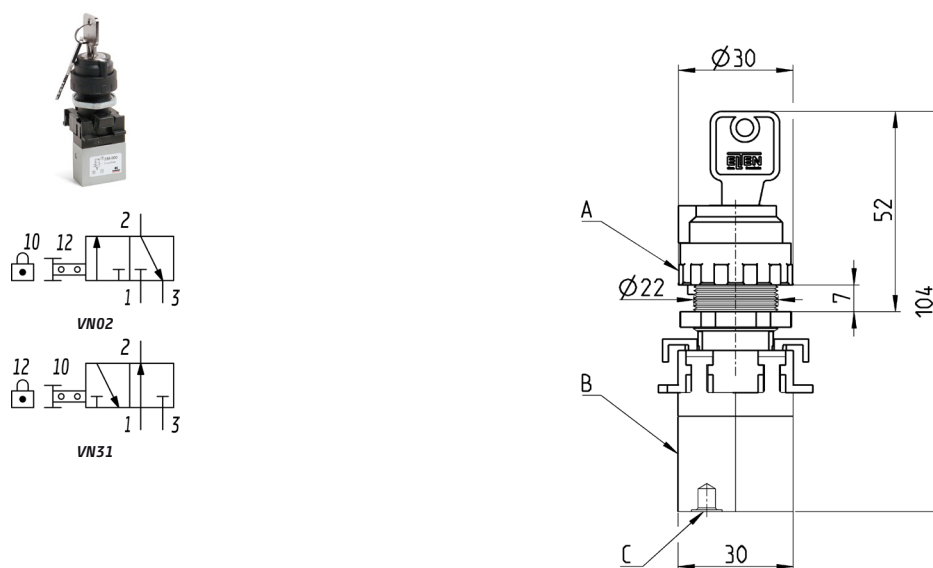
Mod.	Operating pressure [bar]	Flow [NL/min]	Actuating force at 6 bar [N]	A	B	C (Supply/port)	Symbols
234-975	2 ÷ 8	60	7	200-975	234-000	Ø4/2	VN04
235-975	2 ÷ 8	60	7	200-975	235-000	M5	VN04
244-975	2 ÷ 8	60	7	200-975	244-000	Ø4/2	VN05
245-975	2 ÷ 8	60	7	200-975	245-000	M5	VN05

Minivalves Mod. 23...-972, 24...-972



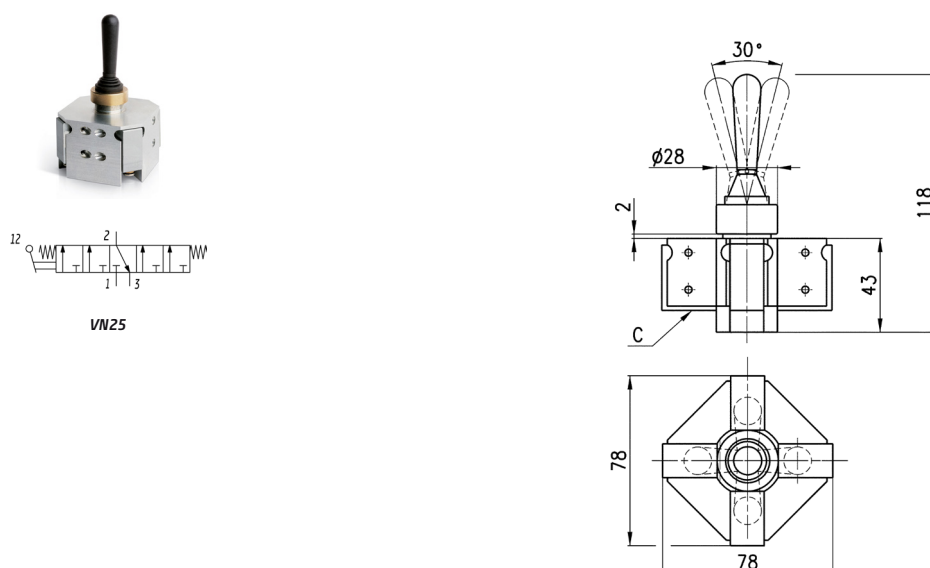
Mod.	Operating pressure [bar]	Flow [NL/min]	Actuating force at 6 bar [N]	A	B	C (Supply/port)	Symbols
234-972	2 ÷ 8	60	7	200-972	234-000	Ø4/2	VN01
235-972	2 ÷ 8	60	7	200-972	235-000	M5	VN01
244-972	2 ÷ 8	60	7	200-972	244-000	Ø4/2	VN28
245-972	2 ÷ 8	60	7	200-972	245-000	M5	VN28

Minivalves Mod. 23...-904, 24...-904



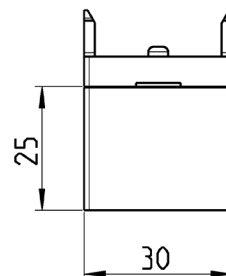
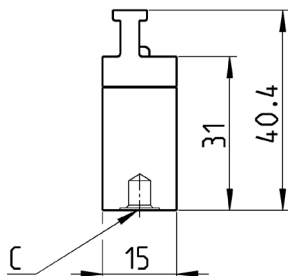
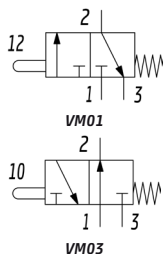
Mod.	Operating pressure [bar]	Flow [l/min]	A	B	C (Supply/port)	Symbols
234-904	2 ÷ 8	60	200-904	234-000	Ø4/2	VN02
235-904	2 ÷ 8	60	200-904	235-000	M5	VN02
244-904	2 ÷ 8	60	200-904	244-000	Ø4/2	VN31
245-904	2 ÷ 8	60	200-904	245-000	M5	VN31

Joystick valves Mod. 234-9054, 235-9054



Mod.	Minimum pressure [bar]
234-9054	2
235-9054	2

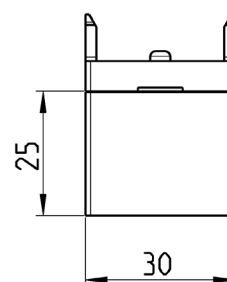
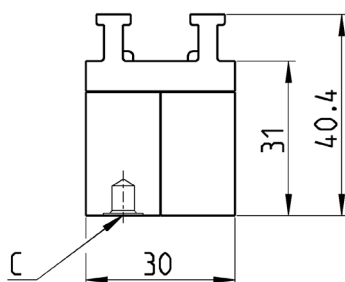
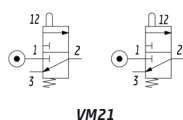
Minivalves Mod. 234-000, 235-000, 244-000, 245-000



Mod.	Operating pressure [bar]	Flow [NL/min]	Symbols
234-000	2 ÷ 8	60	VM01
235-000	2 ÷ 8	60	VM01
244-000	2 ÷ 8	60	VM03
245-000	2 ÷ 8	60	VM03

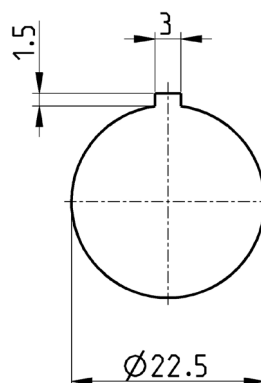
Minivalves Mod. 284-000, 285-000

The codes shown in the table are composed by two 3/2-way valves NC which can be operated with the control device Mod. 200-870 only.



Mod.	Operating pressure [bar]	Flow [NL/min]	Symbols
284-000	2 ÷ 8	60	VM21
285-000	2 ÷ 8	60	VM21

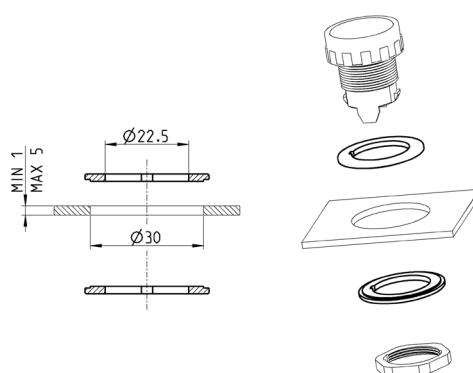
Drilling for mounting Mod. 5



Adaptor



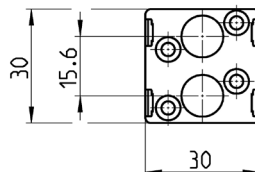
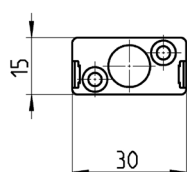
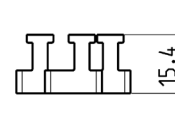
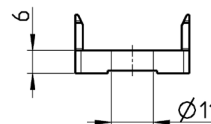
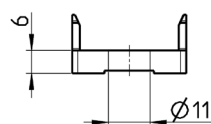
Panel hole adaptor Ø30
 Supplied with:
 2x reduction rings



Mod.

200-2230

End cover



Mod.

210-000

220-000