

# FLOW CONTROL VALVES

## SERIES 28

Bidirectional

Ports: G1/8, G1/4, G3/8, G1/2



These are bidirectional control valves made entirely of nickel-plated brass, with NBR seals and a technopolymer control knob. They are suitable for regulating compressed air, water or mineral oil. For models 2810, 2820, 2819 and 2829 exists the possibility to connect plastic, brass or copper tubes, using nut Mod. 1303 and cushion sleeve Mod. 1310/1320.

### General Data

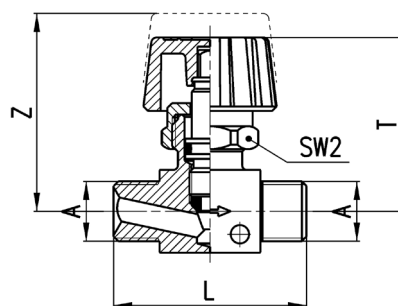
<b>Construction</b>	Cone - type
<b>Materials</b>	Body = nickel-plated brass Control knob = technopolymer Seals = NBR
<b>Ports</b>	G1/8, G1/4, G3/8, G1/2
<b>Installation</b>	As required
<b>Operating temperature</b>	0°C ÷ 80°C (with dry air - 20°)
<b>Operating pressure</b>	0 ÷ 10 bar
<b>Nominal flow rate</b>	See table

FLOW CONTROL VALVES  
**SERIES 28 - DIMENSIONS**

## Valve Mod. 2810



RF01

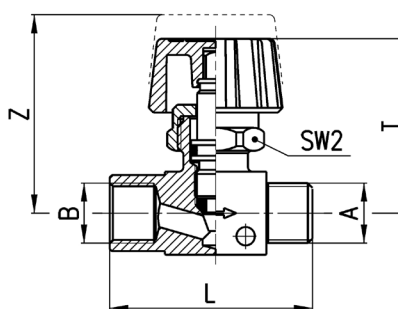


Mod.	A	L	T	Z	SW2	$\Delta 1\text{bar NL/min}$	Free flow NL/min
2810 1/8	G1/8	40	37	42,5	19	415	590
2810 1/4	G1/4	42	37	42,5	19	508	740
2810 3/8	G3/8	42	37	42,5	19	620	900
2810 1/2	G1/2	54	42	48	22	1540	2080

## Valve Mod. 2820



RF01

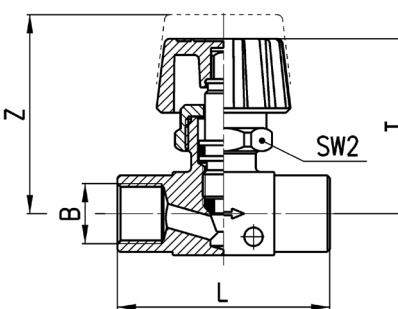


Mod.	A	B	L	T	Z	SW2	$\Delta 1\text{bar NL/min}$	Free flow NL/min
2820 1/8	G1/8	G1/8	41	37	42,5	19	400	640
2820 1/4	G1/4	G1/4	44	37	42,5	19	530	840
2820 3/8	G3/8	G3/8	55,5	41,5	48	22	1415	1990
2820 1/2	G1/2	G1/2	59	42	49	22	1520	2150

## Valve Mod. 2830



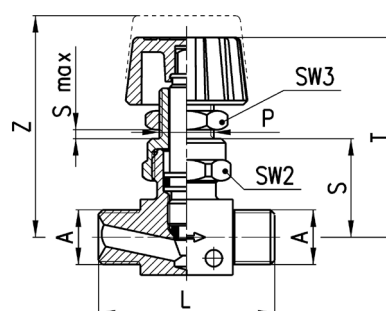
RF01



Mod.	B	L	T	Z	SW2	$\Delta 1\text{bar NL/min}$	Free flow NL/min
2830 1/8	G1/8	42	37	42,5	19	415	635
2830 1/4	G1/4	46	37	42,5	19	530	850
2830 3/8	G3/8	62	41,4	48	22	1415	1980
2830 1/2	G1/2	64	42	49	22	1520	2100

**Valve Mod. 2819**

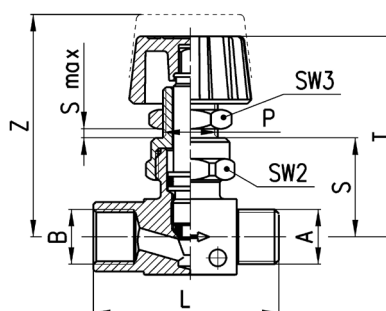

RF01



Mod.	A	L	P	S	T	Z	S	SW2	SW3
2819 1/8	G1/8	40	1/4	7	47	52,5	7	19	17
2819 1/4	G1/4	42	1/4	7	47	52,5	7	19	17

**Valve Mod. 2829**

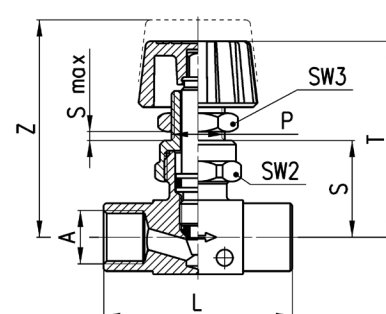

RF01



Mod.	A	B	L	P	S	T	Z	S max	SW2	SW3
2829 1/8	G1/8	G1/8	41	1/4	23	47	52,5	7	19	17
2829 1/4	G1/4	G1/4	44	1/4	23	47	52,5	7	19	17

**Valve Mod. 2839**


RF01



Mod.	A	L	P	S	T	Z	S max	SW2	SW3
2839 1/8	G1/8	42	1/4	23	47	52,5	7	19	17
2839 1/4	G1/4	46	1/4	23	47	52,5	7	19	17
2839 3/8	G3/8	62	14X1	28	56,5	63	7	22	17
2839 1/2	G1/2	64	14X1	29	57	64	7	22	17