

# HGM™ PISTON WHEEL MOTORS

## HGM SPECIFICATIONS

	HGM-H		HGM-L
<b>GEOMETRIC DISPLACEMENT</b>	14.93 in <sup>3</sup> /rev [244.7 cc/rev]	17.84 in <sup>3</sup> /rev [292.3 cc/rev]	17.84 in <sup>3</sup> /rev [292.3 cc/rev]
<b>MAXIMUM SPEED</b>			
CONTINUOUS	210 rpm	185 rpm	185 rpm
INTERMITTENT <sup>1</sup>	250 rpm	210 rpm	210 rpm
<b>MAXIMUM TORQUE<sup>3</sup></b>			
CONTINUOUS	225 ft-lbf [305 Nm]	266 ft-lbf [363 Nm]	291 ft-lbf [395 Nm]
INTERMITTENT <sup>1</sup>	400 ft-lbf [542 Nm]	467 ft-lbf [633 Nm]	516 ft-lbf [700 Nm]
PEAK <sup>2</sup>	550 ft-lbf [746 Nm]	658 ft-lbf [892 Nm]	716 ft-lbf [972 Nm]

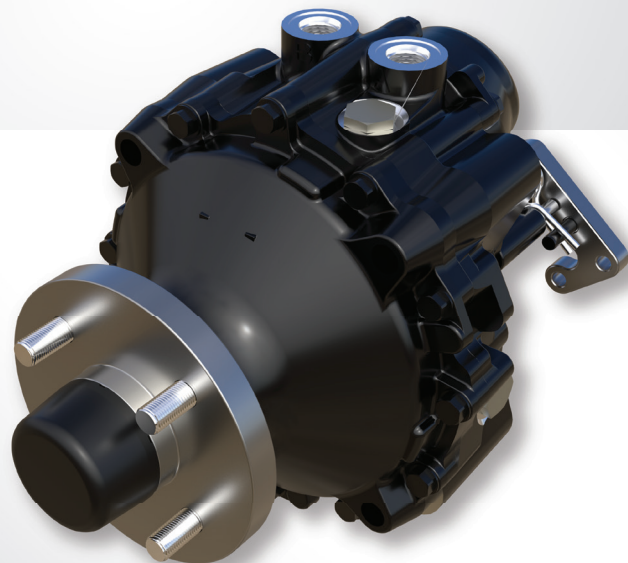
1) Intermittent operation; the permissible values may occur for max. 10% of every minute.

2) Peak load: the permissible values may occur for max. 1% of every minute.

3) 70 SUS oil at 210°F at 15 gpm and 1000 psi and 10 gpm at 3000 psi.

## MOTOR FEATURES

- Industry standard 4 or 5 bolt mounting options, with internal wet disc brake
- Outstanding low-speed performance without cogging



*Specifications subject to change without notice*