

COGNEX

Advanced machine vision made easy

Cognex Product Guide

Barcode Readers and Verifiers
Vision Systems and Sensors
Accessories
Vision Software



Advanced machine vision made easy



The world's leading provider of vision systems, sensors, and software for automation

Cognex brings the power of vision to factory and warehouse automation of all kinds: detecting defects, monitoring production lines, guiding assembly robots, and tracking, sorting, and identifying parts. Our innovative technologies and focus on support throughout the customer journey make vision-based projects easier to set up, more effective, and more reliable.

Cognex machine vision solutions improve product quality and reduce costs at leading manufacturers and logistics providers worldwide, and our mature AI technology makes them more capable and easier to install, maintain, and operate.

Advancing automation is complicated enough already. We make it easier by providing industry-leading support that works the way customers want, from self-service resources to a global network of experts.

>40 years in business

25K+ global customers

500+ global customer support
resources

>1,100 technology patents

cognex.com

Automation for Every Industry

Cognex machine vision and barcode reading solutions enable companies worldwide to reliably automate production tasks and track and trace assets across a wide range of industries and applications.



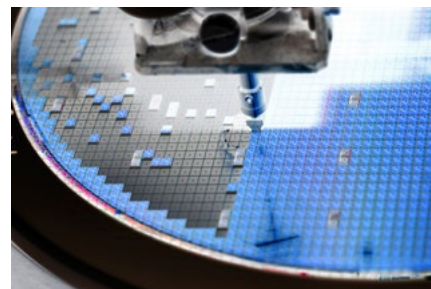
Automotive & EV

- Powertrain
- Tire and Wheel
- Safety Systems
- Chassis
- EV Battery
- Parts Traceability



Consumer Products

- Material Handling
- Automated Assembly
- Packaging Inspection
- Filling
- Labeling and Marketing
- Distribution



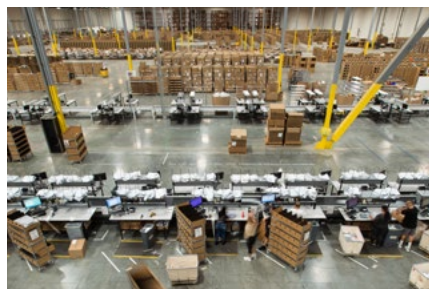
Electronics

- Semiconductors
- LED Manufacturing
- PCB Assembly
- Electronic Hardware
- Consumer Devices



Food & Beverage

- Product Quality Inspection
- Packaging Inspection
- Assembly Verification
- Allergen Management and Traceability
- Warehousing and Distribution



Logistics & Warehouse Operations

- Inbound Logistics
- Order Fulfillment
- Sortation
- Outbound Logistics



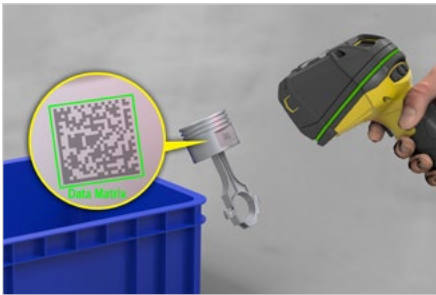
Pharmaceutical & Medical

- Medical Device Solutions
- Vials and Vaccines
- Tablet and Capsule Manufacturing
- Pharmaceuticals Protection
- Allergen Management and Traceability
- 21 CFR Part 11 Support

Barcode Readers and Verifiers

Barcodes are essential for automating identification and data capture, requiring fast and accurate reading for maximum efficiency. Cognex image-based barcode readers decode even the toughest codes with industry-leading read rates, advanced technology, and modular options to optimize performance, increase throughput, and improve traceability.

Application examples



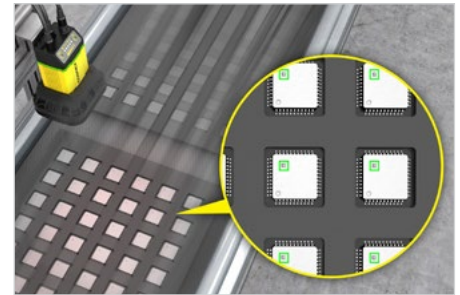
Automotive

Direct part mark (DPM) reading: Read DPM codes on automotive parts



Food and beverage

1D code reading: Scan 1D codes on product packaging



Electronics

Multi-code reading: Decipher multiple codes at the same time



Logistics

Label-based code reading: Scan and decode 1D barcodes on shipping labels



Packaging

Multi-symbology reading: Decipher multiple code types at once



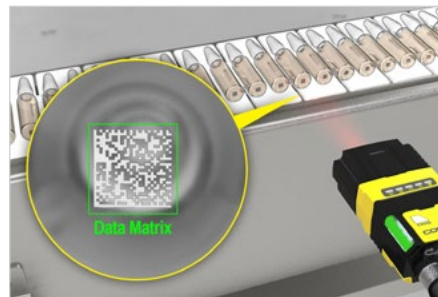
Pharmaceutical

DPM reading: Read DPM codes on medical devices



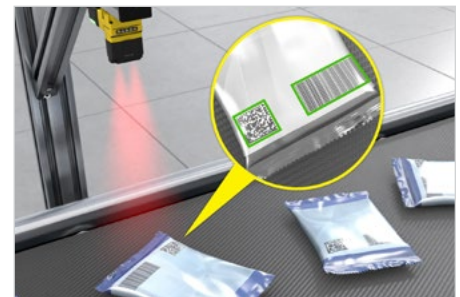
Electric vehicle

DPM reading: Scan DPM codes on curved surface of cylindrical batteries



Medical

DPM reading: Decipher codes on the specular surface of glass vials



Consumer product

Label-based code reading: Read codes on final product packaging

AI-Powered Readers

All-purpose reader

DataMan 290

Handle any code, application, or environment to solve a range of barcode scanning challenges.

cognex.com/dataman290

High-resolution reader

DataMan 390 Series

Tackle the most demanding decoding applications including multi-code and multi-symbology scanning.

cognex.com/dataman390



Optimize your read rates with AI at every step

1 Find

AI-enabled setup

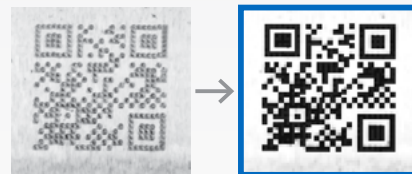
Position the code and find the right settings for easy setup, and quickly locate barcodes for faster processing.



2 Enhance

AI-enhanced decoding

Increase image quality and detect clocking patterns in damaged or low-quality codes for more reliable code reading.



3 Read

AI-powered analysis

Read all code types, including occluded, distorted, or challenging codes with industry-proven decoding algorithms.



Fixed-Mount and Handheld Readers



Robust handheld reader

DataMan 8700 Series

Read the toughest DPM and label-based codes even in harsh environments.

cognex.com/dataman8700



Flexible reader

DataMan 280

Scan a variety of codes with flexible performance for standard to customized needs.



High-speed reader

DataMan 380

Automate scanning applications on high-speed lines, including multi-code and multi-symbology reading.

Ultra-compact reader

DataMan 80

Automate traceability in confined spaces with a compact form factor designed for seamless factory integration.



For high throughput logistics applications

Modular Vision Tunnels

Cognex Modular Vision Tunnels (MVT) optimize sortation, inbound receiving, and outbound logistics with up to 99.9% read rates and flexible options to support different requirements.



Barcode verifiers

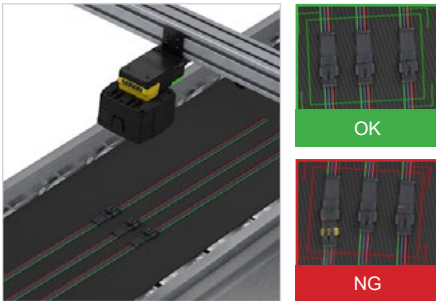
Barcode verification grades the quality of barcodes to global standards. Cognex barcode verifiers ensure compliance and readability and provide detailed reports to address code quality issues.

cognex.com/barcode-verifiers

Vision Sensors and Systems

Over 1 billion products are made every day using machine vision. Cognex vision sensors and systems perform highly-detailed inspections at every stage of manufacturing to optimize quality, minimize waste, and maximize throughput.

Application examples



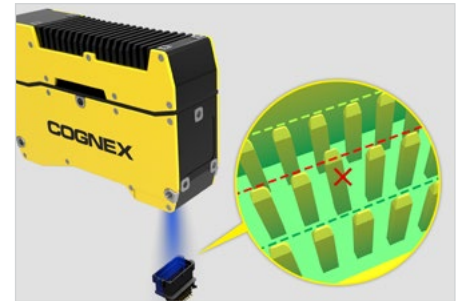
Automotive

Assembly verification: Ensure proper seating of wiring harnesses



Consumer products

Defect detection: Inspect labels on final product packaging



Electronics

Alignment check: Check if pins or components are correctly aligned



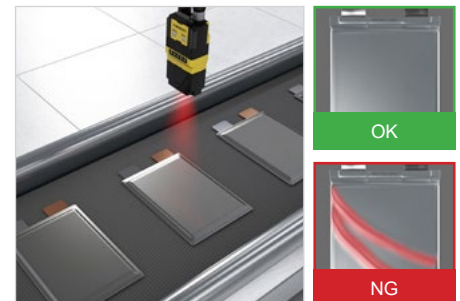
Logistics

Character reading: Read text on shipping labels



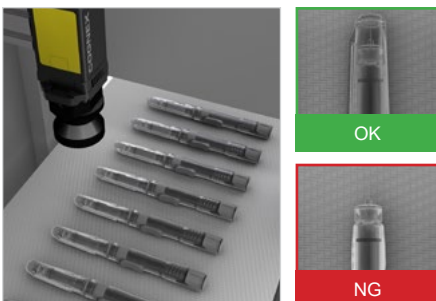
Food and beverage

Inspection: Ensure product uniformity



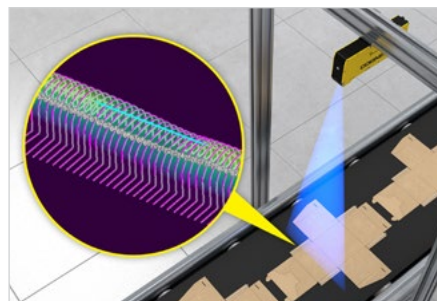
Electric vehicle

Presence/absence detection: Find defects on EV battery pouches



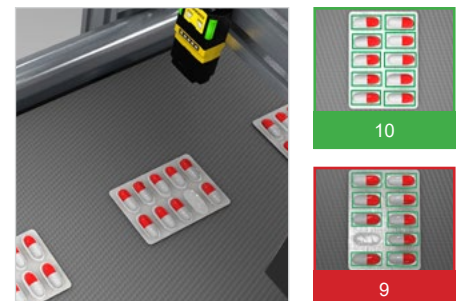
Medical

Defect detection: Inspect for defects to ensure quality compliance



Packaging

Measurement: Gauge glue application on boxes



Pharmaceutical

Counting: Check completeness of pill packs

AI-Powered Vision

Easy-to-use vision sensor

In-Sight SnAPP

Quickly solve simple quality and process control tasks with no experience needed.

cognex.com/snapp



General purpose vision system

In-Sight 2800 Series

Automate a range of standard inspection applications in minutes.

cognex.com/in-sight-2800



High speed, high-resolution vision system

In-Sight 3800 Series

Solve demanding vision applications with flexible performance options.

cognex.com/in-sight-3800

Embedded AI for flexibility and ease of use

Simplify setup and find subtle, variable anomalies.

Example-based training

Train jobs using just a few sample images.

Real-time training feedback

View results in real-time to verify performance and identify potential issues early.

Comprehensive toolset

Cognex vision systems integrate AI and rule-based tools. Functions can be used individually for simple jobs or combined to automate more challenging problems.





Next-generation 3D vision system

In-Sight L38 Series

Perform advanced inspection, measurement, and guidance tasks with high accuracy.

cognex.com/in-sight-l38



Ultra-compact vision system

In-Sight 8900 Series

Automate defect detection and track-and-trace in confined spaces while ensuring regulatory compliance.

cognex.com/in-sight-8900

For more complex 3D applications

L38 with VisionPro and L68 Series

Solve challenging and customized tasks with high-speed processing and ultimate programming control.



Rule-Based Vision

Cognex traditional, rule-based vision systems detect user-defined features or patterns, such as shape, color, size, or position, to perform reliable inspections. They offer high-speed processing and consistent results for controlled manufacturing environments.



Speed and accuracy for predictable applications

In-Sight 7000/8000/9000 Series

Automate well-defined tasks with reliability and efficiency.

Accessories

Cognex accessories optimize the performance of machine vision systems, so they can operate reliably and efficiently in a variety of manufacturing and logistics environments. These accessories include a range of lenses, lighting, and industrial cameras.

Lenses

The Cognex portfolio of lenses includes standard and telecentric options compatible with a variety of sensor sizes and resolutions. All lenses offer industry-proven performance, a compact design for easy integration, and customizable settings to support a variety of technical specifications.

cognex.com/lenses



Lighting

Cognex lighting provides consistent, controllable illumination to ensure high-contrast, high-quality imaging for accurate measurement, alignment, and inspection.

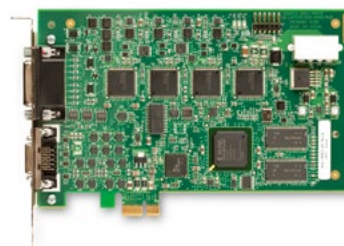
cognex.com/lighting



Industrial cameras

Available in both area scan and line scan formats, Cognex industrial cameras offer seamless integration with PC-based vision software to provide a complete solution.

cognex.com/industrial-cameras



Frame grabbers

Cognex frame grabbers capture and quickly transfer large amounts of data from cameras to processing units. They ensure image data is accurately and efficiently acquired, making them essential in high-speed, high-precision applications.

Vision Software

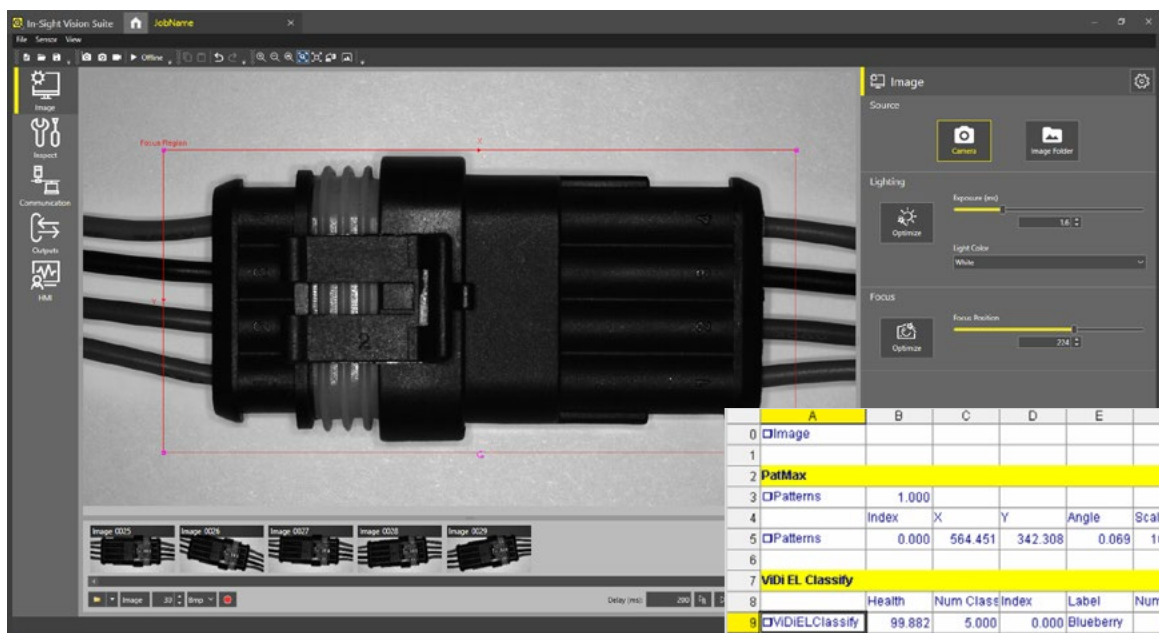
Cognex vision software provides the power and flexibility to solve the most challenging manufacturing applications. Available in several formats, including programmatic and graphical user interfaces, Cognex software offers direct access to the most robust vision tool libraries.

Unified software platform offers flexibility and scalability

In-Sight Vision Suite

In-Sight Vision Suite is the software platform for training and deploying In-Sight vision systems. Common across all In-Sight products, it provides both graphical and spreadsheet-based environments to solve tasks of varying complexity.

cognex.com/in-sight-vision-suite



The screenshot displays the In-Sight Vision Suite software interface. The main window shows a camera feed of a cable connector with a red bounding box indicating a region of interest. The interface includes a toolbar on the left with icons for Image, Record, Communication, Outputs, and IML. On the right, there are panels for Image Source (Camera, Image Folder), Lighting (Exposure, Light Color), and Focus (Focus Position). Below the camera feed, there are image thumbnails and a status bar. A spreadsheet window is overlaid on the bottom right, showing a table with columns A through I and rows 0 through 15. The spreadsheet contains data for various vision tasks, including image processing, pattern matching, and classification.

	A	B	C	D	E	F	G	H	I
0	Image								
1									
2	PatMax								
3	OPatterns	1.000							
4		Index	X	Y	Angle	Scale	Score		
5	OPatterns	0.000	564.451	342.308	0.069	100.000	59.819		
6									
7	VIDI EL Classify								
8		Health	Num Class	Index	Label	Num Image	Score		
9	VIDI EL Classify	99.882	5.000	0.000	Blueberry	8.000	98.949	<input checked="" type="checkbox"/> Collect Samples	
10					1.000 Damaged	5.000	0.373		
11					2.000 Lemon	6.000	0.369		
12					3.000 Strawberry	6.000	0.309		
13					4.000 Missing	6.000	0.000		
14					Unlabeled	0.000			
15									

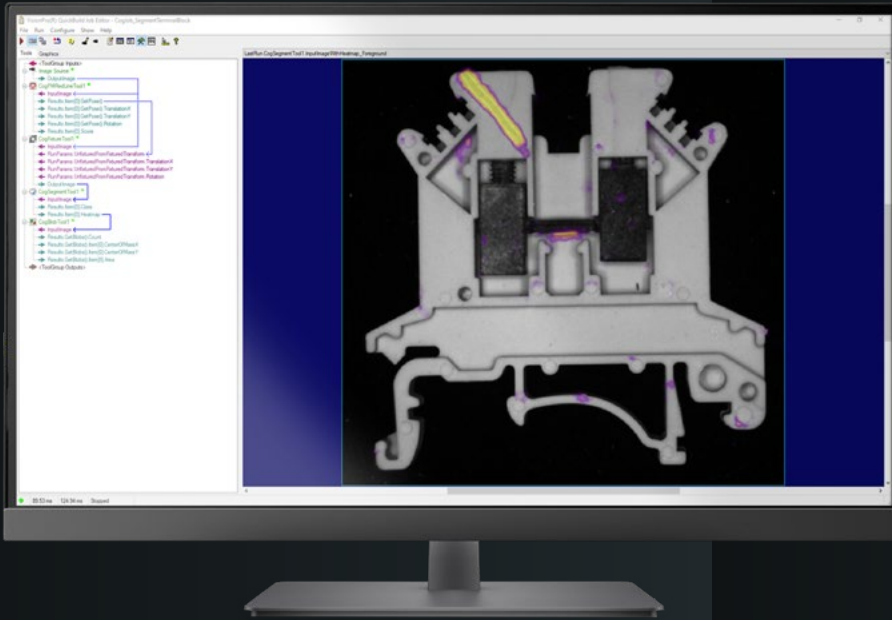
Point-and-click-programming

EasyBuilder

The EasyBuilder interface offers an intuitive, wizard-like experience that guides users step-by-step through setup of standard vision applications.

Spreadsheet programming

The spreadsheet interface offers robust programming capabilities for advanced or customized applications, allowing experienced users to adjust specific job parameters to their specific need.



Ultimate programming control for complex tasks

VisionPro

VisionPro is a powerful PC-based vision software offering unmatched programming control for solving advanced and highly customized manufacturing applications and tasks that demand the fastest processing speeds.

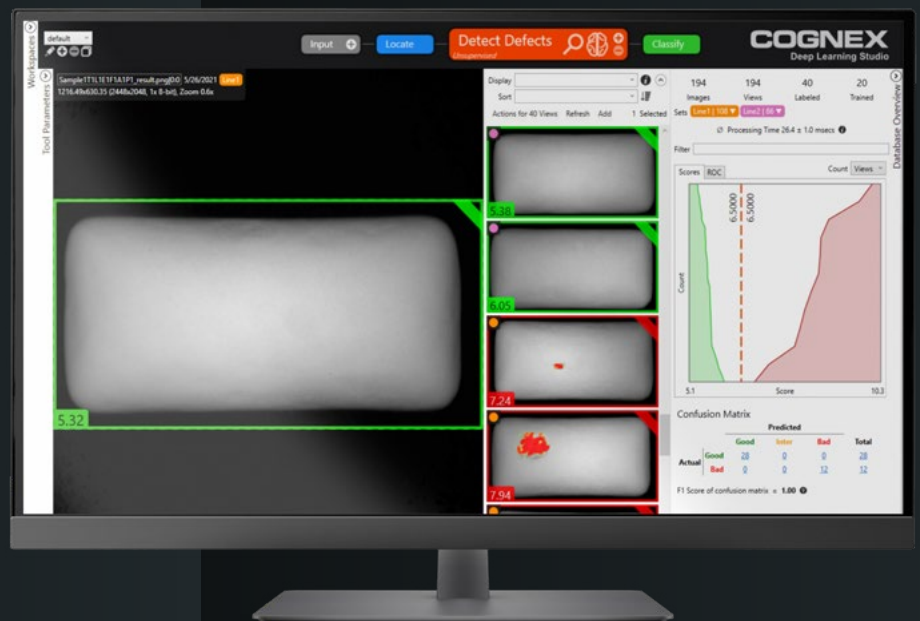
cognex.com/visionpro

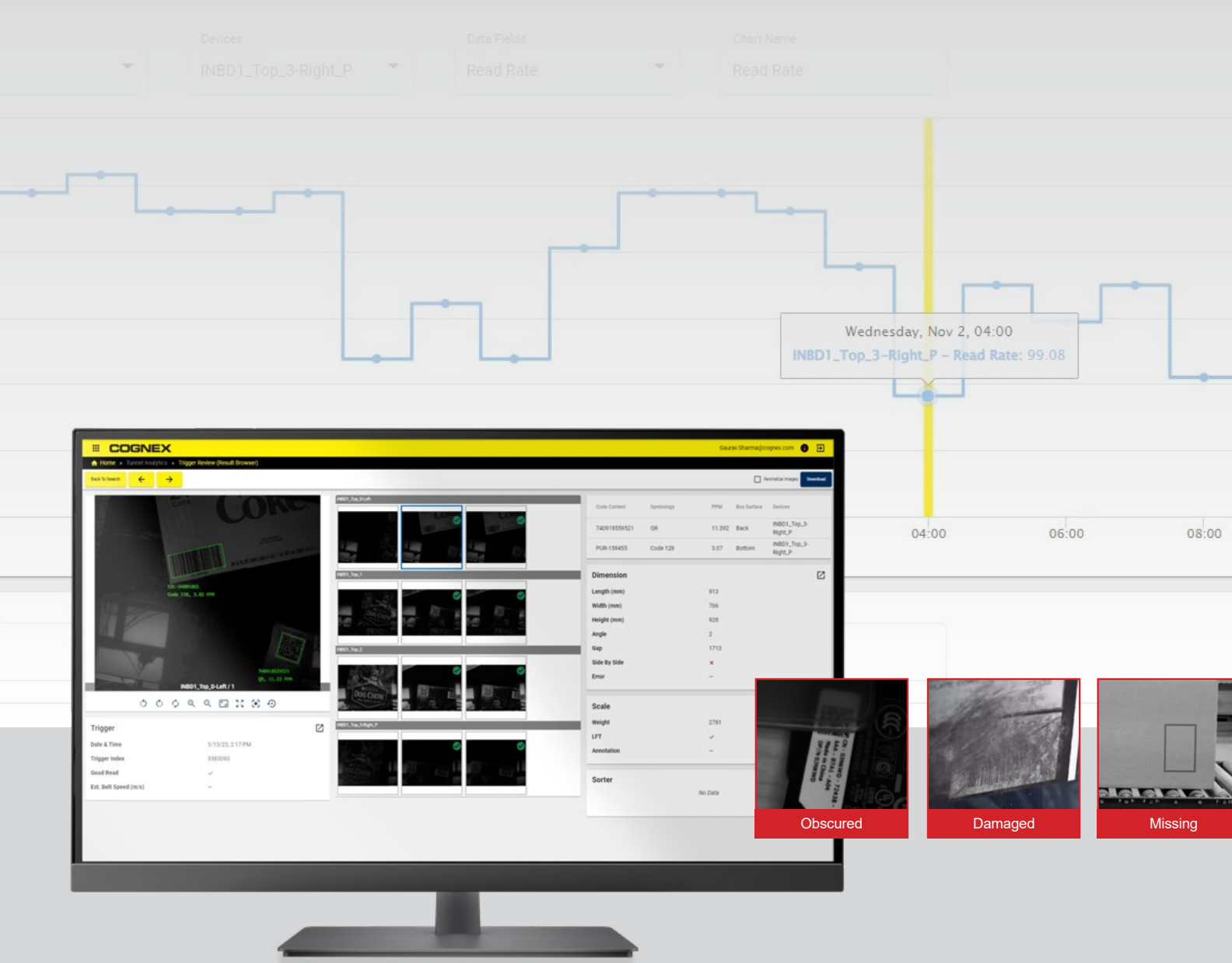
AI-powered image analysis for variable applications

VisionPro Deep Learning

VisionPro Deep Learning automates tasks that are too complicated and time-consuming to handle with traditional rule-based algorithms, making it an ideal solution for challenging inspections that require advanced AI-driven analysis.

cognex.com/visionpro-deep-learning





Data intelligence for optimized performance

Edge Intelligence

The Cognex Edge Intelligence platform provides real-time visibility into production lines, with easy access to visualization and diagnostics tools to quickly identify and resolve issues. Fully integrated with select Cognex products and logistics tunnels, it streamlines device management and site-wide deployments.

cognex.com/edge-intelligence

Empowering your success with end-to-end customer support

Cognex Customer Success

From personalized setup and training to expand your capabilities to continual learning and performance optimization, Cognex guides you at every step of your automation journey.

With Cognex Customer Success, you can focus on what matters most – delivering quality, innovation, and efficiency in your manufacturing process.

- **Plan & Deploy**
- **Run & Support**
- **Expand & Optimize**



Plan & Deploy

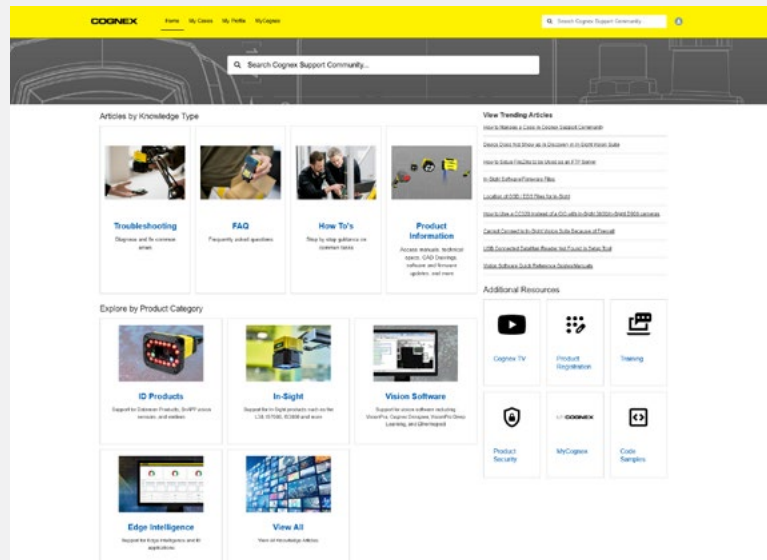
- **Targeted guidance** to choose the right products and validate your deployment
- **Tuning and positioning guidance** built in
- **Curated documentation and videos** for configuration and setup
- **Image-based AI tools** for easy model training
- **Global partner network** when you need expert help





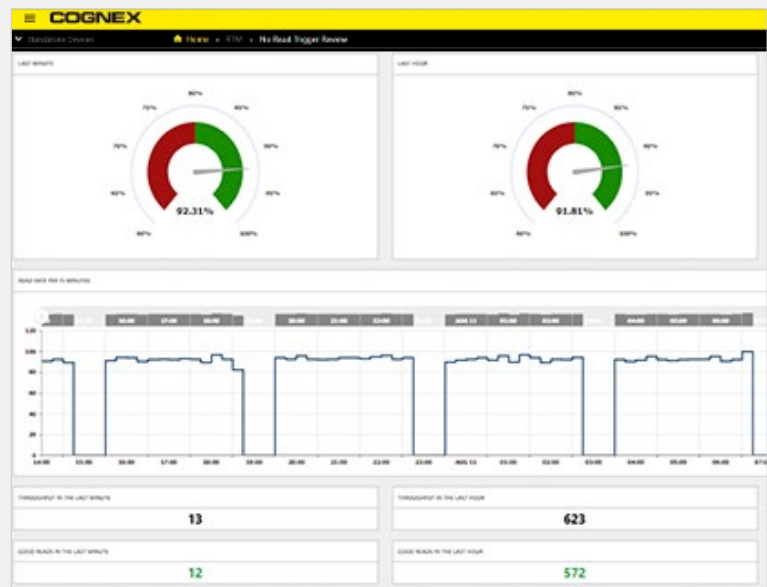
Run & Support

- **Connected tech support** flows seamlessly across email, text, WhatsApp, phone, and chat
- **Expert help and guidance** via visual remote assistant and easy online scheduling
- **Self-service training** to take you from beginner to expert, in multiple languages
- **Cognex support community** provides answers, real-time status updates, and transparent case tracking
- **Reliable, resilient products** made to stay running consistently, tolerate harsh environments, and be easy to adjust if needed



Expand & Optimize

- **Broad portfolio of products** with common tools and software, plus easy upgrade paths
- **Pre-built dashboards** that help you find performance insights across your entire operation
- **Management tools** to control settings across devices, lines, and plants
- **Out-of-the-box data sharing** makes it easy to connect to enterprise systems
- **Coaching from experts** with decades of experience to help you grow quickly and smoothly



Cognex Product Portfolio

Vision Systems and Software

Optimize inspection processes with advanced AI, ensuring accurate defect detection, assembly verification, text reading, and more.

www.cognex.com/machine-vision



Barcode Readers

Achieve end-to-end traceability across production and distribution, with flexible readers and verifiers designed for ease of use and reliability.

www.cognex.com/barcodereaders



Industry Solutions

Tackle applications across a wide range of industries with powerful machine vision solutions that simplify manufacturing and logistics challenges.

www.cognex.com/solutions



COGNEX

Advanced machine vision made easy

Corporate Headquarters One Vision Drive Natick, MA 01760 USA

Contact us or find your regional sales office:
www.cognex.com/sales

Americas

North America	+1 855 426 4639
Brazil	+1 855 426 4639
Mexico	+52 552 789 5444

Europe

Austria	+49 721 958 8052
Belgium (FR)	+33 176 549 318
France	+33 176 549 318
Germany	+49 721 958 8052
Ireland	+353 21 601 9005
Italy	+39 02 9475 4345
Spain	+34 93 220 6237
Switzerland (DE)	+49 721 958 8052
Switzerland (FR)	+33 176 549 318
United Kingdom	+353 21 601 9005
Other Europe	+353 21 601 9005

Asia-Pacific

China	+86 021 8036 5424
India	+91 7305 040397
Japan	+81 345 790 266
Korea	+82 070 4784 4038
Malaysia	+60 3 2774 6820
Singapore	+65 3158 2511
Taiwan	+886 801 492 017
Other Asia-Pacific	+65 3158 2511

© Copyright 2025, Cognex Corporation.
All information in this document is subject to change without notice. All Rights Reserved. Cognex, DataMan, In-Sight, Easybuilder, and VisionPro are registered trademarks of Cognex Corporation. All other trademarks are property of their respective owners. Lit. No. COGPG-EN-04-2025

www.cognex.com