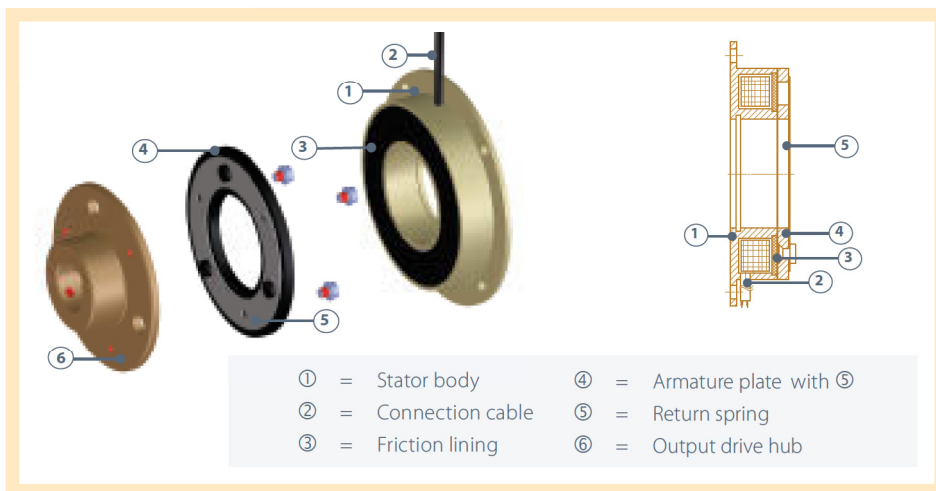
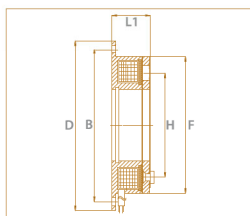


Construction and mode of operation

The stator body must be installed concentrically with the output side. For further Installation advises and technical details, please refer to page 28.

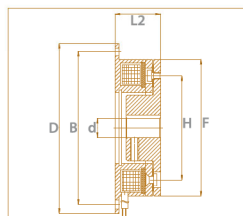


Model A



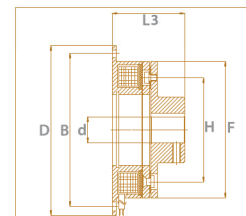
Brake without hub
Basic version without drive hub.
Connection to output side by screws.

Model B



Brake with internal hub
Basic version with axial output drive. Internal hub.

Model C



Brake with external hub
Basic version with axial output drive. External hub.

Performance data and dimensions

Size	B02	B03	B04	B05	B06	B07	B08	B09
Torque [Nm] For reference purposes ¹⁾	1.0	4.5	8.0	20.0	38.0	80.0	150.0	280.0
Speed of rotation max. [rpm]	10.000	8.000	6.000	5.000	4.000	3.000	3.000	2.000
Power [W] T = 20° C	9	12	20	23	32	40	55	72
d max. [mm] ²⁾	8	17	20	30	35	42	50	75
D [mm]	60	80	100	125	150	190	230	290
L1 [mm]	21.0	22.0	24.5	28.0	31.0	35.0	41.5	48.0
L2 [mm]	24.0	25.5	28.5	33.0	37.5	42.0	50.4	59.0
L3 [mm]	33.0	37.0	44.5	53.0	61.0	73.0	89.5	103.0
B [mm]	52	72	90	112	137	175	215	270
F [mm]	42	63	80	100	125	160	200	250
H [mm]	29	46	60	76	95	120	158	210

¹⁾ Depending on design of installation, operating and ambient conditions

²⁾ Keyway to DIN 6885/1