

Pulsed Blow Valve BNP Series



Neglecting on-site costs?

Air reduction*

75%



*This is a reference value under CKD test conditions.

CKD Corporation

CC-1640AA

Energy is conserved

2 convenient types for different applications

Pistol type BNP-G

Easy-to-aim pistol type

Air can be blown onto workpieces with pinpoint accuracy.

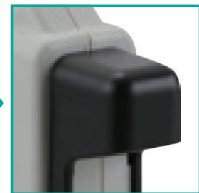
Easy to grip design

Ergonomic design for easy gripping requiring little force.



Frequency knob

Frequency adjustment is easy with 1 knob rotation.



With needle protective cover

Unit type BNP-U



Frequency knob

Frequency adjustment is easy with 1 knob.

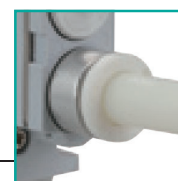
Flexible mounting direction

It can be installed in any direction, anywhere.

Thin, Compact Design

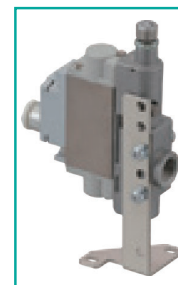
Thin enough to be installed in narrow places.

17 mm



One-touch fitting on air supply side

No power supply required



With mounting plate

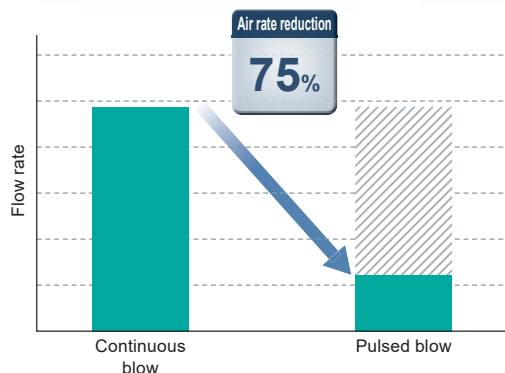
*Option

Ecology / Economy

by pulses

■ Eco-friendly via air reduction

75% reduction compared with continuous blow



Reducing air also reduces ENERGY.

Item	Continuous blow	Pulsed blow
Air consumption per product (Pressure: 0.5 MPa, frequency: 10 Hz, nozzle hole diameter: $\varnothing 2.5$)	243 L/min	61 L/min
Annual air consumption (Annual working days: 250 days, working hours: 8 hours/day)	29,160 m ³	7,320 m³ (75% Reduction)
Annual CO ₂ Emissions	1.75t-CO ₂	0.44t-CO₂
Annual energy consumption	4,053 kWh	1,017 kWh

*This is a reference value under CKD test conditions.

When replaced by
1 pulse blower unit

1.31t-CO₂/Year
Reduced

Reference
CO₂ emissions per 1 m³ compressed air: 60 g

■ Eco with low pressure

Compatible with energy-saving low-pressure lines from 0.25 MPa working pressure

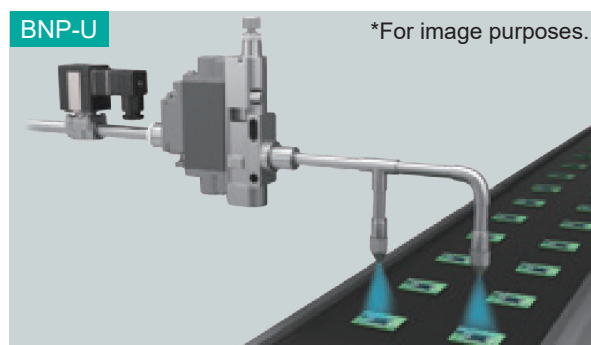
■ Eco-friendly because its maintenance-free

The main valve section of the highly reliable long-life solenoid valve (4G Series) is used.

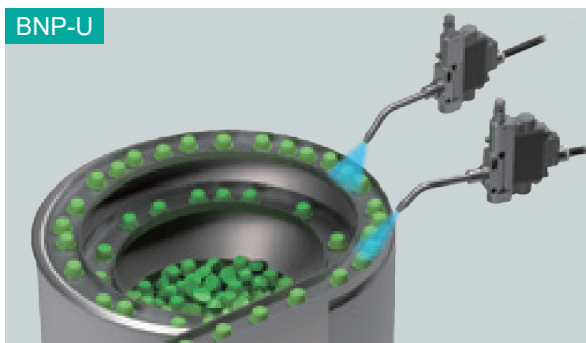
Applications



Dirt removal on small parts



Dirt removal on workpieces on the conveyor



Assists parts in the parts feeder

Pulsed Blow Valve

BNP Series

BNP Series

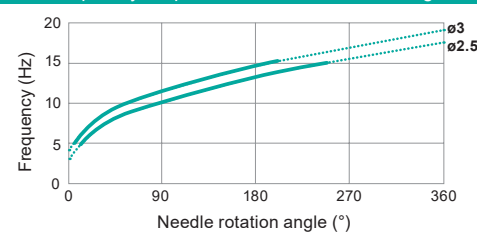
Specifications

Item		BNP-G (Pistol type)	BNP-U (unit type)
Working fluid		Compressed air ^{*1}	
Working pressure		0.25 to 0.7 MPa	
Proof pressure		1.05 MPa	
Ambient temperature		-5 to 50°C (no freezing)	
Fluid temperature		5 to 50°C	
Pulse frequency range		5 to 15 Hz ^{*2}	
Port size	Supply port	Rc1/4	ø8 Push-in fitting
	Blow port	With nozzle	Rc1/4
Nozzle hole diameter		2.5 (recommended) 3.0 mm	-
Weight		250 g	130 g

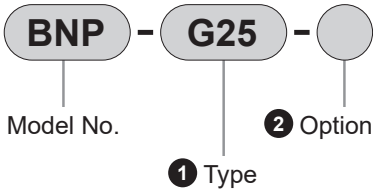
*1: Install the dryer, filter and oil mist filter on the primary side and remove water or oil.

*2: Pressure: 0.5 MPa, performance for CKD measurement circuit.

Frequency response vs needle rotation angle



How to Order



① Type

Code	Description
G25	Pistol / nozzle hole diameter 2.5 mm
G30	Pistol / nozzle hole diameter 3.0 mm
U08	Unit / Blow port Rc1/4

② Option

Code	Description
Blank	None
P	Mounting plate included ^{*1}

*1: The mounting plate is dedicated for unit (U08).

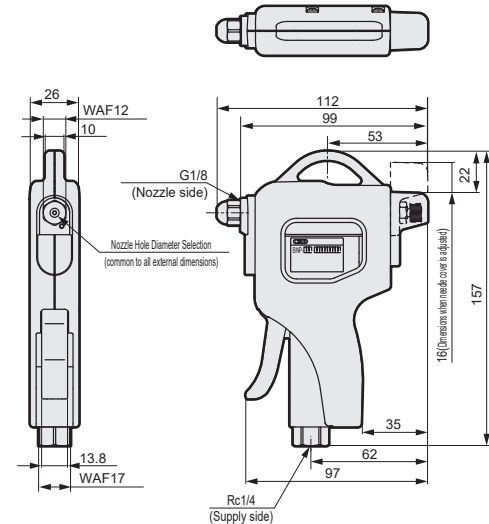
Model No. of single mounting plate

BNP-MOUNT-PLATE-KIT

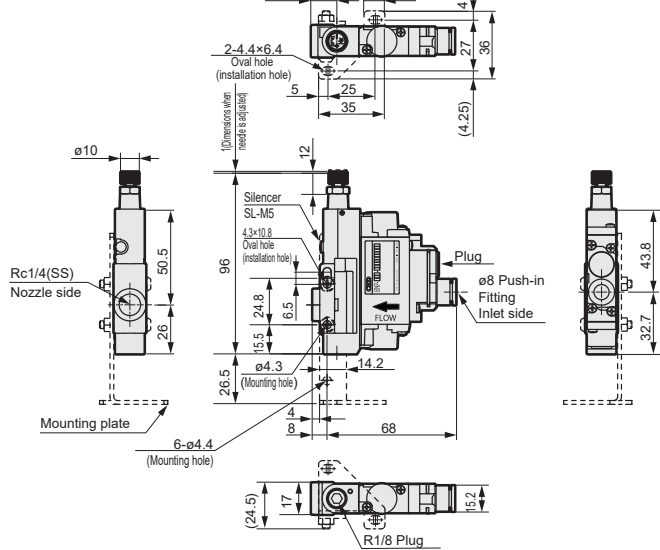
*Mounting plate, 2 mounting screws, 2 plain washers, 2 nuts

Dimensions

● BNP-G*



● BNP-U08



Safety Precautions

- Be sure to wear protective eyewear and earplugs to prevent scattered objects from entering the eyes when blowing air or cause noise-induced hearing loss.
- Leaving the unit in a dusty or flying place may cause malfunction due to penetration into the interior or clogging of the silencer.
- Do not apply excessive rotation torque when adjusting the needle.
- After adjusting the needle, fix with a nut and close the needle cover (BNP-G only).
- It can be used to remove dry deposits, assist in workpiece transfer, etc. Confirm before use that moisture or oil is removed.
- Read the instruction manual for proper use of this product.

The goods and/or their replicas, the technology and/or software found in this catalog are subject to complementary export regulations by Foreign Exchange and Foreign Trade Law of Japan. The law requires a license from Ministry of Economy, Trade and Industry to export them.

CKD Corporation

[Website]
<https://www.ckd.co.jp/en/>

Head Office • Plant
Tokyo Office
Osaka Office

2-250, Uji, Komaki, Aichi 485-8551
4F, Bunkahousou Media Plus, 1-31-1, Hamamatsu-cho,
Minato-ku, Tokyo 105-0013
6F, PMO EX Shin-Osaka, 4-2-10 Miyahara,
Yodogawa-ku, Osaka 532-0003

TEL(0568)77-1111 FAX(0568)77-1123
TEL(03)5402-3620 FAX(03)5402-0120
TEL(06)6396-9630 FAX(06)6396-9631

● Specifications are subject to change without notice.
© CKD Corporation 2024 All copy rights reserved.

2024.10