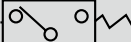


Mechanical pressure switch

APE Series

Repeatability: Within ± 0.02 MPa, set pressure: 0.1 to 0.8 MPa.

● Port size: Rc1/4

JIS symbol 



Specifications

1 MPa \approx 145.0 psi, 1 MPa = 10 bar

Item		APE						
Working fluid		Compressed air						
Max. working pressure	MPa	1.0 (\approx 145 psi, 10 bar)						
Proof pressure	MPa	1.5 (\approx 217 psi, 15 bar)						
Set pressure	MPa	0.1 (\approx 15 psi, 1 bar) to 0.8 (\approx 116 psi, 8 bar)						
Fluid temperature	$^{\circ}$ C	5 (41 $^{\circ}$ F) to 60 (140 $^{\circ}$ F)						
Micro switch		Z-15GD-B (OMRON)						
Contact array		1C						
Hysteresis	MPa	0.1 (\approx 15 psi, 1 bar) to 0.49 (\approx 71 psi, 4 bar), hysteresis within 0.049 (\approx 7 psi, 0 bar)						
		0.5 (\approx 73 psi, 5 bar) to 0.8 (\approx 116 psi, 8 bar), hysteresis within 0.078 (\approx 11 psi, 0 bar)						
Repeatability	MPa	Within ± 0.020 (\approx 2 psi, 0 bar) of set pressure						
Ambient temperature	$^{\circ}$ C	-5 (23 $^{\circ}$ F) to 60 (140 $^{\circ}$ F) (no freezing)						
Ambient humidity	%	90 or less						
Max. working frequency	cycle/min.	20						
Insulation resistance	M Ω	100 or more (with 500 VDC megger)						
Mounting orientation		Arbitrary						
Weight	kg	0.57						
Micro switch rated								
Load	Non-inductive load (A)				Inductive load (A)			
Circuit	Resistance load		Lamp load		Inductive load		Electric motor load	
Voltage	N.C.	N.O.	N.C.	N.O.	N.C.	N.O.	N.C.	N.O.
125 VAC	15	15	3.0	1.5	15	15	5.0	2.5
250 VAC	15	15	2.5	1.25	15	15	3.0	1.5
30 VDC	6.0	6.0	3.0	1.5	5.0	5.0	5.0	2.5

How to order



Mechanical pressure switch

Ⓐ Wiring/piping method

*1

*2

Ⓑ Indicator lamp

Code	Description		
Ⓐ Wiring/piping method			
8T	Standard	Air piping port Rc1/4, electric wire outlet port G1/2	
8N	Standard	Air piping port Rc1/4, electric wire outlet port ϕ 10	
8F	Option	Air piping O-ring, electric wire outlet port ϕ 10	
Ⓑ Indicator lamp			
Blank	Without indicator lamp		
1N	100/200 VAC with indicator lamp		
3N	24 VDC with indicator lamp		

⚠ Precautions for model No. selection

*1: When NPT port size is required, indicate N after 8.
(Example) APE-8NT APE-8NN

*2: An O-ring (JIS B2401P10) and two hexagon socket head cap screws (M5 x 55 ℓ) are included with APE-8F as accessories.

[Example of model No.]

APE-8T-1N

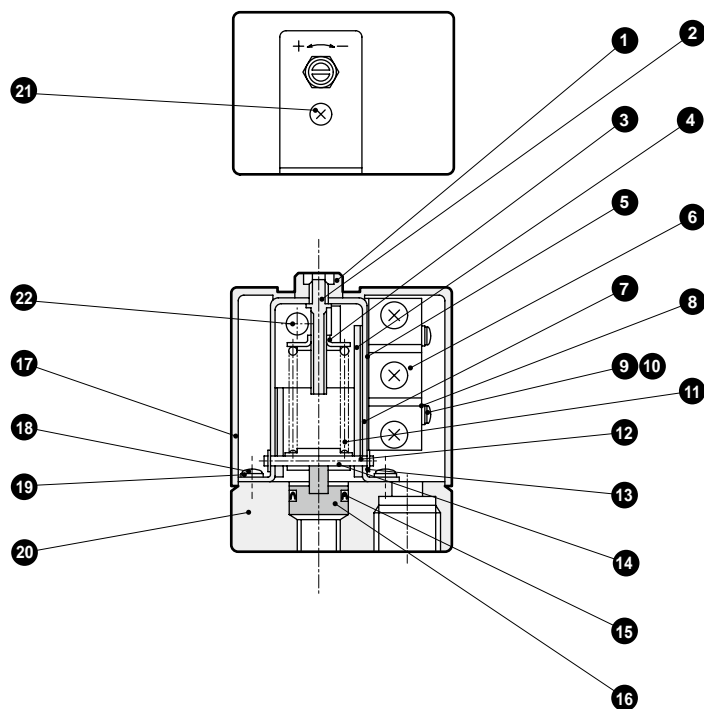
Model No.: Mechanical pressure switch

Ⓐ Wiring/piping method: Rc1/4

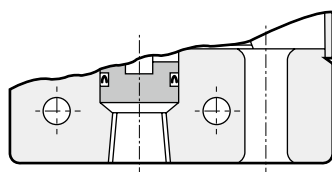
Ⓑ Indicator lamp: With lamp for 100/200 VAC

Internal structure and parts list

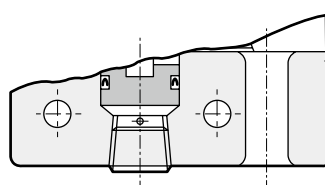
● APE-8T



● APE-8N



● APE-8F



No.	Part name	Material	Remarks	No.	Part name	Material	Remarks
1	Nut	Steel		12	Pin	Steel	
2	Adjusting screw	Steel		13	E type snap ring	Steel	
3	Spring holder	Steel		14	Spring holder	Steel	
4	Lever	Steel		15	Y packing	Nitrile rubber	
5	Insulating plate			16	Piston	Polyacetal	
6	Micro switch		Z-15GD-B	17	Cover	ABS resin	
7	Frame	Steel		18	Cross-recessed pan head machine screw	Steel	M4 x 10
8	Flat washer	Steel	Nominal 3	19	Spring washer	Steel	Nominal 4
9	Cross-recessed pan head machine screw	Steel	M3 x 20	20	Body	Zinc die-cast	
10	Spring washer	Steel	Nominal 3	21	Cover securing screw	Steel	M3 flat head machine screw
11	Spring	Piano wire		22	Lamp		With indicator lamp (standard) only

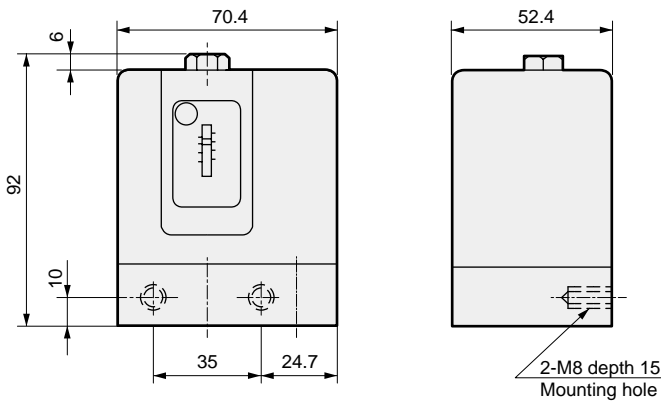
F.R.L.
F.R.
F (Filtr)
R (Reg)
L (Lub)
Drain Separ
Mech Press SW
Res press exh valve
SlowStart
Anti-bac/Bac-remove Filtr
Film Resist FR
Oil-ProhR
Med Press FR
No Cu/ PTFE FRL
Outdrs FRL
Adapter Joiner Press Gauge
CompFRL
LgFRL
PrecsR
VacF/R
Clean FR
ElecPneuR
AirBoost
Speed Ctrl
Silncr
CheckV/ other
Fit/Tube
Nozzle
Air Unit
PrecsCompn
Electro Press SW
ContactSW
AirSens
PresSW Cool
Air Flo Sens/Ctrl
WaterRISens
TotAirSys (Total Air)
TotAirSys (Gamma)
Gas generator
RefrDry
DesicDry
HiPolymDry
MainFiltr
Dischrg etc
Ending



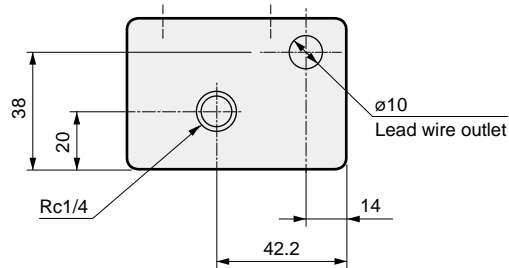
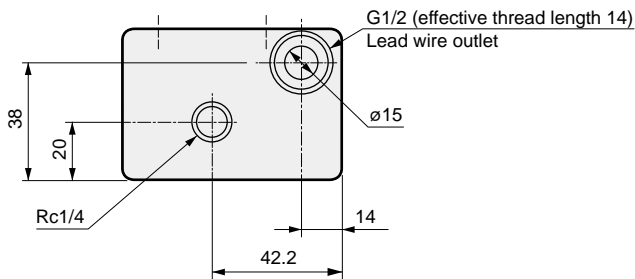
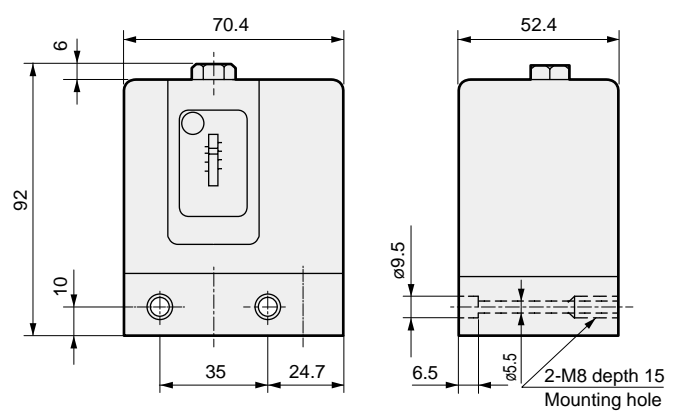
F.R.L. Dimensions

- F.R.L.
- F.R.
- F (Filtr)
- R (Reg)
- L (Lub)
- Drain
- Separ
- Mech
- Press SW
- Res press
- exh valve
- SlowStart
- Anti-bac/Bac-
- remove Filtr
- Film
- Resist FR
- Oil-ProhR
- Med
- Press FR
- No Cu/
- PTFE FRL
- Outdrs FRL
- Adapter
- Joiner
- Press
- Gauge
- CompFRL
- LgFRL
- PrecsR
- VacF/R
- Clean FR
- ElecPneuR
- AirBoost
- Speed Ctrl
- Silncr
- CheckV/
- other
- Fit/Tube
- Nozzle
- Air Unit
- PrecsCompn
- Electro
- Press SW
- ContactSW
- AirSens
- PresSW
- Cool
- Air Flo
- Sens/Ctrl
- WaterRiSens
- TotAirSys
- (Total Air)
- TotAirSys
- (Gamma)
- Gas
- generator
- RefrDry
- DesicDry
- HiPolymDry
- MainFiltr
- Dischrg
- etc
- Ending

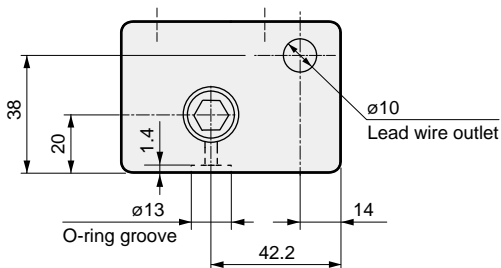
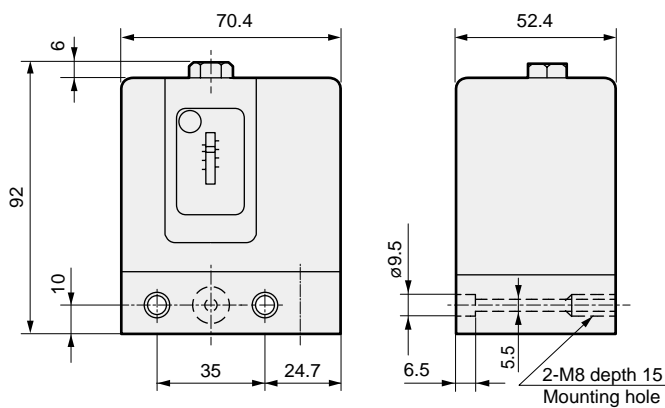
● APE-8T



● APE-8N

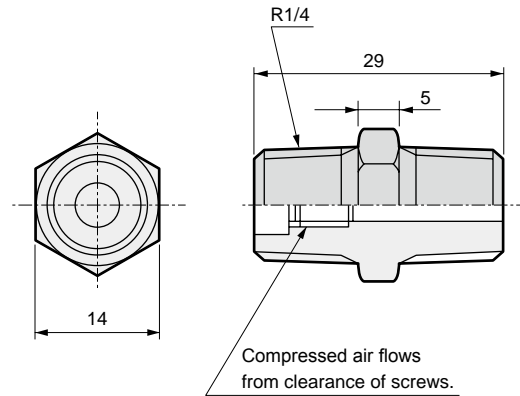


● APE-8F



Related parts

● Pressure absorbing nipple part model No.: APE-6556



Weight: 27 g

Pressure absorbing nipple mounting dimensions

