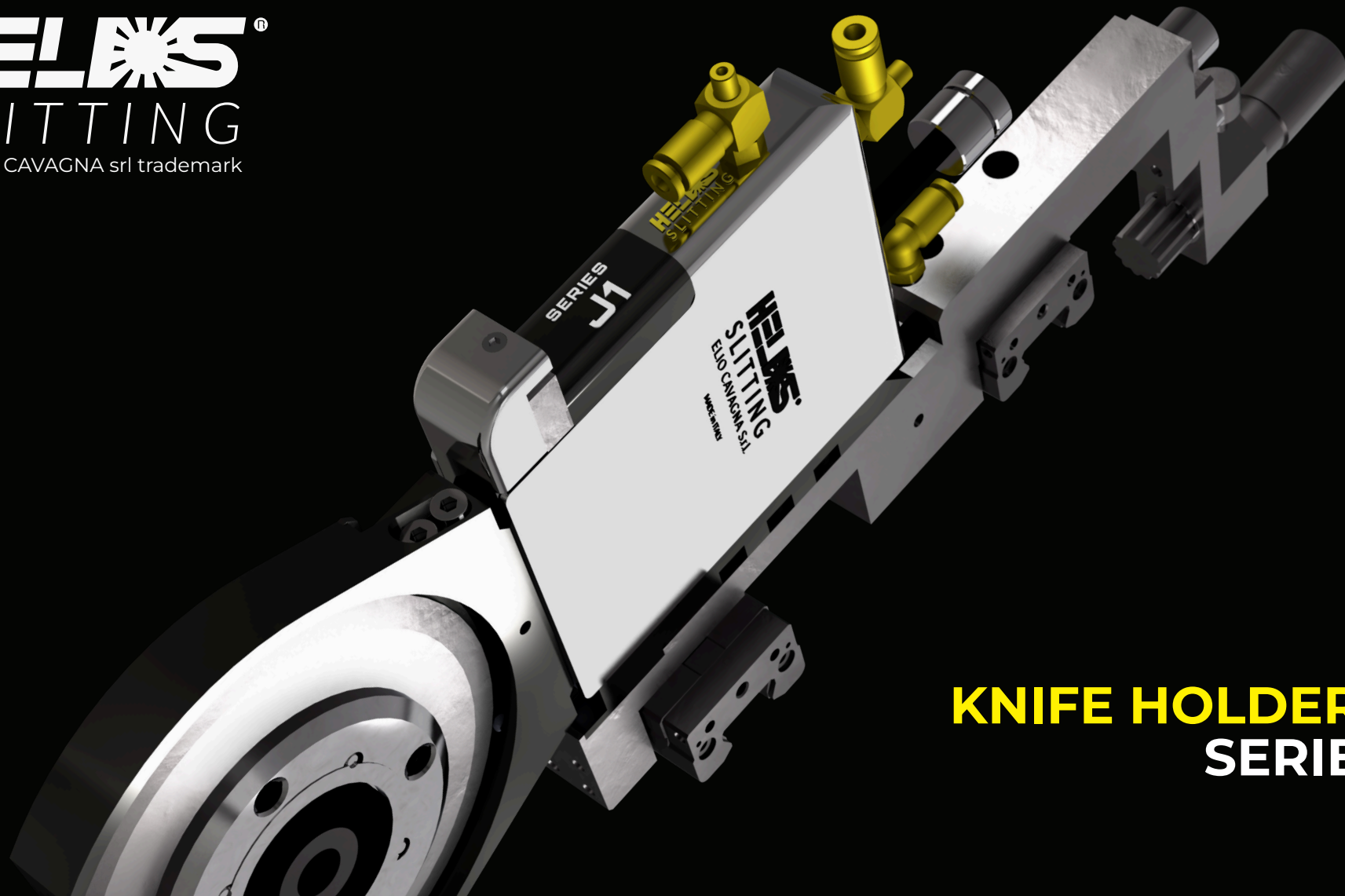


**HELIX**<sup>®</sup>  
SLITTING  
an ELIO CAVAGNA srl trademark



**KNIFE HOLDERS**  
**SERIES**

**YOUR PARTNER IN SLITTING**



**LINKEDIN**



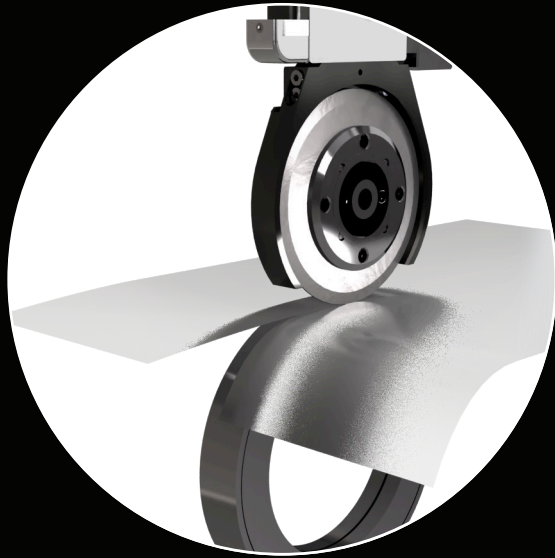
**YOUTUBE**



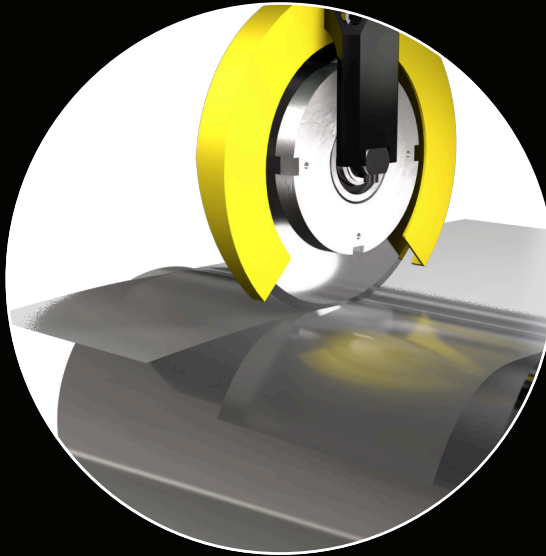
**WEBSITE**

KNIFE HOLDERS SERIES  
CUTTING TYPOLOGY

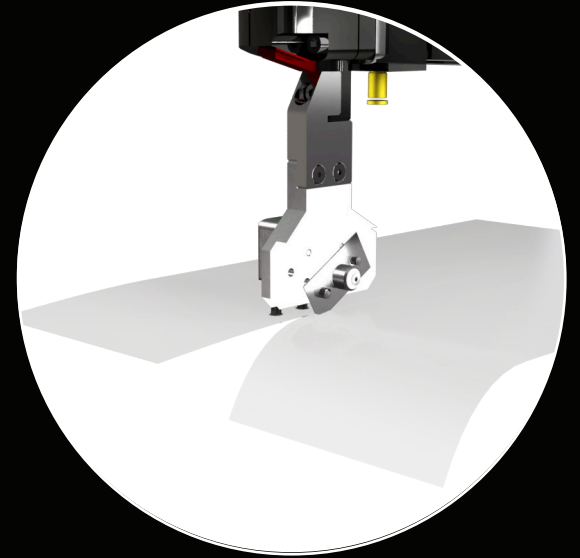
**SHEAR CUT**



**SCORE CUT**



**RAZOR CUT**



# KNIFE HOLDERS SERIES CHOOSE YOUR CUTTING DEVICE

CATEGORY	SHEAR CUT														SCORE CUT						RAZOR CUT		
	TOP THIN	TOP MANUAL			TOP EASY SETTING			ESSENTIAL			BASIC												
MODEL	J1-19	J2-40C	J3L-48C	J3H-75C	J2B-40C	J3B-48C	J3B-75C	J52-40C	J53-48C	J53-75C	J13PCS	JCS2-40C	JCS3-48C	JCS3-75C	EK125	EK125 CS	EK30	EKJ30	JCS3-TP48	J3H-TP48	HEAD	J3H-TL100	J3H-RB
FEATURES								interchangeable with S series													TL 90 TL 105 TL 130 TL 150		
	20	40	50	75	40	50	75	40	50	75	20	40	50	75	25	25	30	40	50	80	20/40/50	100	80
	ø90 ø105	ø90 ø105	ø130 ø150	ø130 ø150 ø180 ø200	ø90 ø105	ø130 ø150	ø130 ø150 ø180 ø200	ø90 ø105	ø130 ø150	ø130 ø150	ø90 ø105	ø90 ø105	ø130 ø150	ø130 ø150	ø100	ø100	ø100	ø100	ø130 ø150 ø180	ø130 ø150 ø180	razor b. 43x22x 0,3	razor b. 43x22x 0,3	razor b. stanley 60x19x 0,65
	1000	1000	1500	2500	1000	1500	2500	600	1000	1200	1000	600	800	800	400	400	400	400	500	500	****	****	****
	3.15454.E	4.8579.E	4.8579.E	4.8579.E	4.318.E	4.318.E	4.318.E	4.7282.E	4.7283.E	4.7283.E	4.318.E	4.318.E	4.318.E	4.318.E	4.318.E	4.15454.E	4.318.E	4.8579.E	4.318.E	4.8579.E	**	4.8579.E	4.8579.E
VERTICAL FORCE	—	—	—	—	—	—	—	—	—	—	—	—	—	—	45kg	45kg	25kg	25kg	80kg	85kg	—	—	80kg
MATERIALS																							
	≤ 250	≤ 300	≤ 600	≤ 1500	≤ 300	≤ 600	≤ 1500	≤ 350	≤ 600	≤ 800	≤ 250	≤ 350	≤ 600	≤ 800	✗	✗	✗	✗	✗	✗	✗	✗	✗
	≤ 250	≤ 300	≤ 600	≤ 1500	≤ 300	≤ 600	≤ 1500	≤ 350	≤ 600	≤ 800	≤ 250	≤ 350	≤ 600	≤ 800	✗	✗	✗	✗	✗	✗	✗	✗	✗
	≤ 0,6*	≤ 0,6	≤ 1	≤ 2*	≤ 0,6	≤ 1	≤ 2*	≤ 0,4	≤ 1	≤ 1,2	≤ 0,6	≤ 0,4	≤ 1	≤ 1,2	✗	✗	✗	✗	✗	✗	≤ 0,03	≤ 0,03	≤ 12
	≤ 300	≤ 400	≤ 600	≤ 1000	≤ 400	≤ 600	≤ 1000	≤ 400	≤ 600	≤ 800	≤ 300	≤ 400	≤ 600	≤ 800	▽	▽	▽	▽	▽	▽	✗	✗	✗
	▽	▽	▽	▽	▽	▽	▽	▽	▽	▽	▽	▽	▽	▽	▽	▽	▽	▽	▽	▽	✗	✗	✗
	≤ 200	≤ 200	<500	<500	≤ 200	≤ 500	≤ 500	≤ 200	≤ 200	≤ 300	≤ 200	≤ 200	≤ 200	≤ 300	✗	✗	✗	✗	✗	✗	✗	✗	✗
	▽	▽	▽	▽	▽	▽	▽	▽	▽	▽	▽	▽	▽	▽	▽	▽	▽	▽	▽	▽	▽	▽	▽
FIBERGLASS (gsm)	≤ 200	≤ 300	≤ 500	≤ 1000	≤ 300	≤ 500	≤ 1000	≤ 300	≤ 500	≤ 700	≤ 200	≤ 300	≤ 500	≤ 700	▽	▽	▽	▽	▽	▽	✗	✗	✗

\* Higher ask for feasibility

\*\* Guidebar type according to knifeholder model

\*\*\* Maximum appropriate speed determined by maximum blade and counterblade diameter. It can also effect bladeflife

\*\*\*\* Speed depends on razor steel quality

▽ ASK FOR FEASIBILITY

✗ NOT POSSIBLE

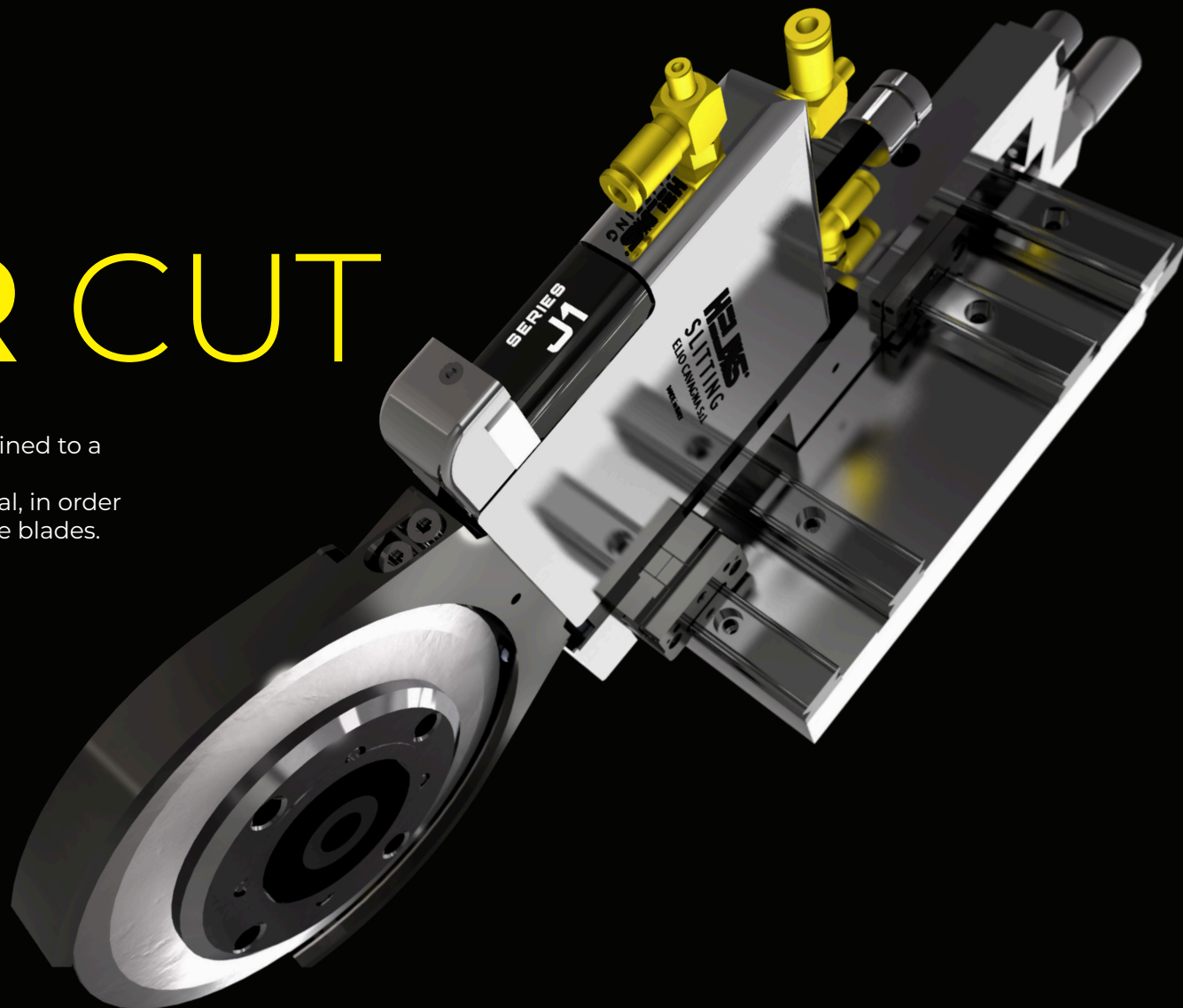


# SHEAR CUT

Shear cutting means that a top knife is combined to a bottom knife that is motorized.  
It is the right solution for every type of material, in order to obtain the best quality and a long life of the blades.

## GOALS

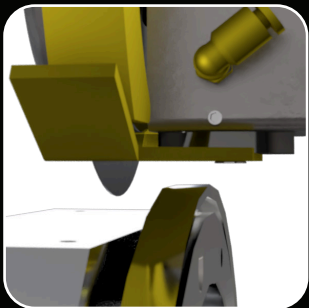
- TOP CUT QUALITY
- NO DUST
- LONG BLADE LIFE
- SUGGESTED FOR HIGH SPEED
- ABLE TO CUT LARGE RANGE OF MATERIALS



## SHEAR CUT MAIN FEATURES

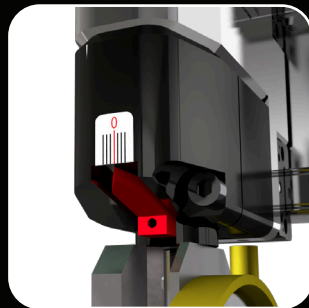
### OVERLAP SETTING

BLADE STROKE REGULATION MONIUS



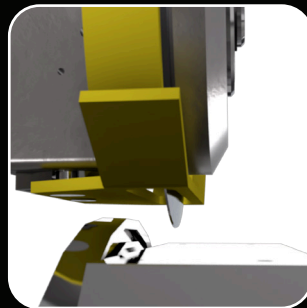
### CANT ANGLE

EASY SETTING FOR ALL MATERIALS



### SIDE FORCE

BLADE AXIAL LOAD



### HEAD EXTRACTION

FAST AND EASY



### HEAD ROTATION

180°



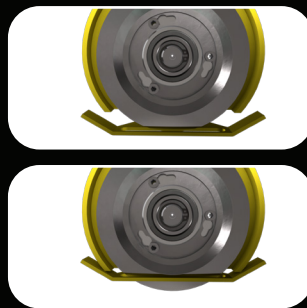
### BLADE CHANGE

FAST & EASY



### SAFETY

360°



### POSITIONING KNOB

COMPLETE WITH PNEUMATIC BRAKE

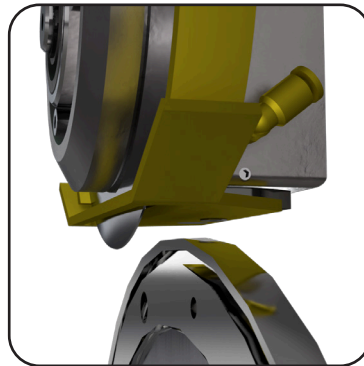
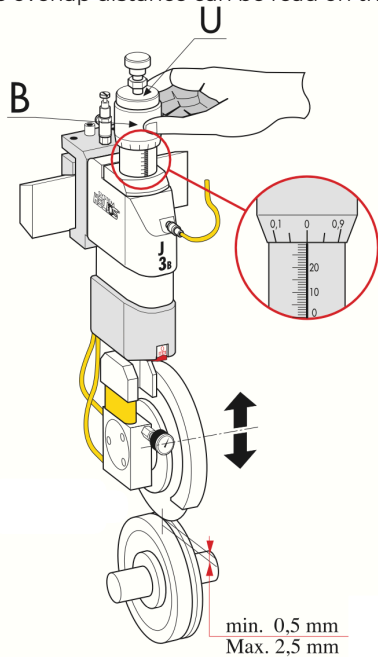


## SHEAR CUT MAIN FEATURES

### BLADE OVERLAP SETTING

#### STROKE REGULATION

Blade overlap, usually between 0.5 to 1.5mm, depends on material type. Thanks to depth adjustment it is possible to accurately set the blade stroke and find the correct overlap (penetration). With knife holder model J2 and J3 the overlap distance can be read on the graduated scale.



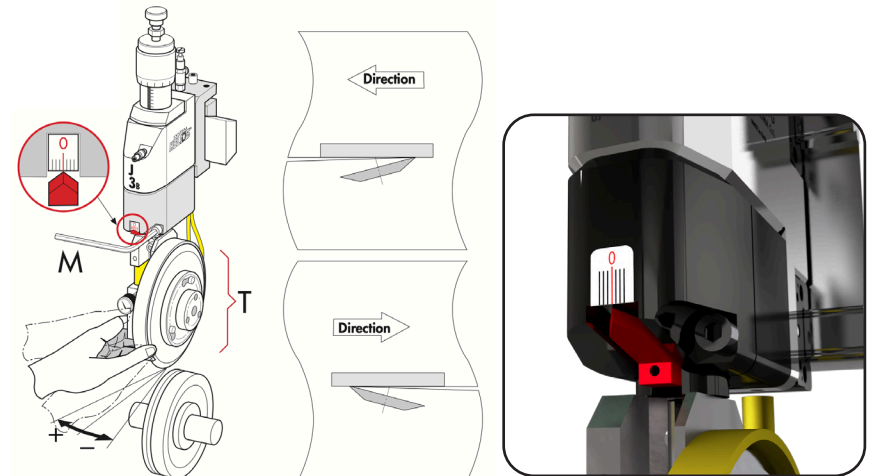
### CUTTING ANGLE

#### EASY SETTING FOR ALL MATERIALS

With Helios knifeholders it is possible to find the correct cant angle. It means that without any extra tool the operator can set it according to material typology.

#### BENEFITS:

- Reduce the contact surface between top and bottom knife.
- Better cutting quality
- Increase blade lifetime
- Minimized dust generation



## SHEAR CUT MAIN FEATURES

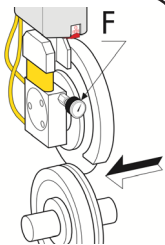
### SIDE FORCE

ADJUSTMENT OF CUTTING PRESSURE BETWEEN TOP KNIFE AND BOTTOM KNIFE

Setting can be done by manual knob or pneumatic regulator.

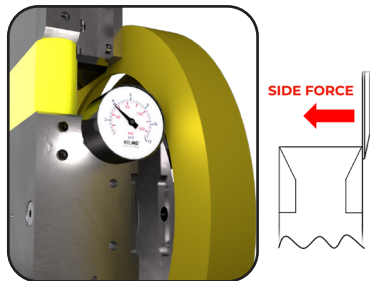
#### MANUAL

With positioning knob it is possible to set blade side load manually.



#### PNEUMATIC

With our pneumatic regulation version (J2B J3B) it is possible to obtain the correct side force pressure. The pressure gauge mounted on the knife holder displays the side load force being applied to the bottom knife. The operator can then adjust the side load pressure to the minimum required to cut the material which will prolong the knife life.

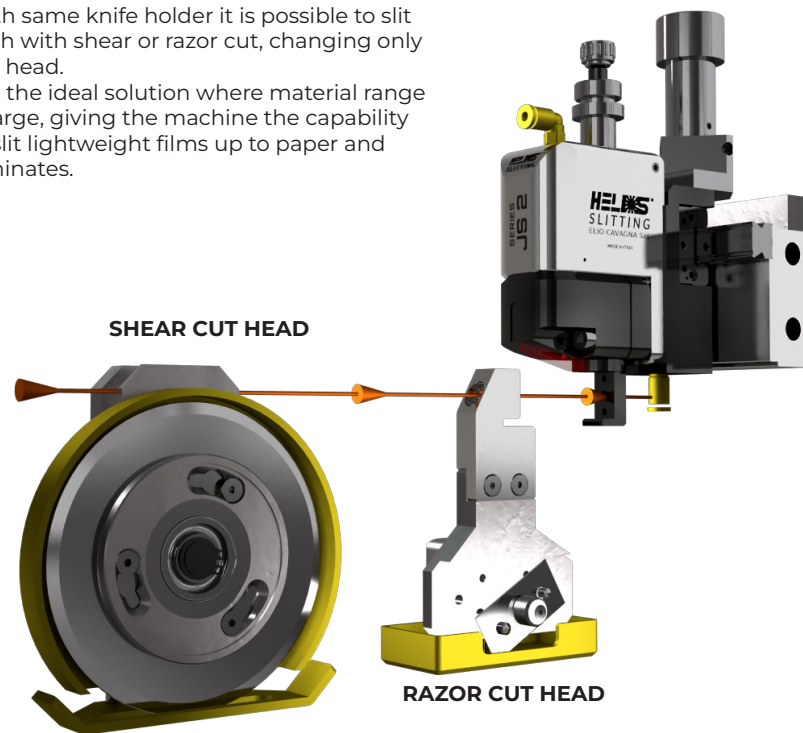


### HEAD REPLACEMENT

EASY TO SWITCH FROM SHEAR TO RAZOR

With same knife holder it is possible to slit both with shear or razor cut, changing only the head.

It is the ideal solution where material range is large, giving the machine the capability to slit lightweight films up to paper and laminates.



## SHEAR CUT TOP THIN - SERIES

# J1

SUITABLE FOR NARROW CUTS FROM 20mm

Designed to cut a large range of materials.  
 Thanks to the twin linear slides and individual pneumatic brake positioning is fast and easy.  
 It is also possible to work at high machine speeds without vibration.  
 J1 can be supplied on our automatic knife setting systems.

### TECH SPECS

MIN. SLIT	20mm
BLADE	ø90 ø105
MAX. SPEED	1000 mpm***
GUIDEBAR TYPE	3.15454.E

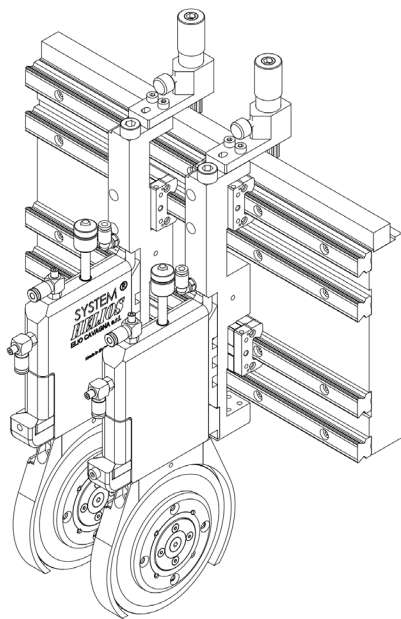
### MATERIALS

PAPER	≤ 250 gsm
LAMINATE	≤ 250 gsm
PLASTIC FILM/SHEET	≤ 0,6 mm *
NONWOVEN	≤ 300 gsm
TEXTILE	ASK
ALUMINIUM	≤ 200 micron
RUBBER	ASK
FIBERGLASS	≤ 200 gsm



### OPTIONAL

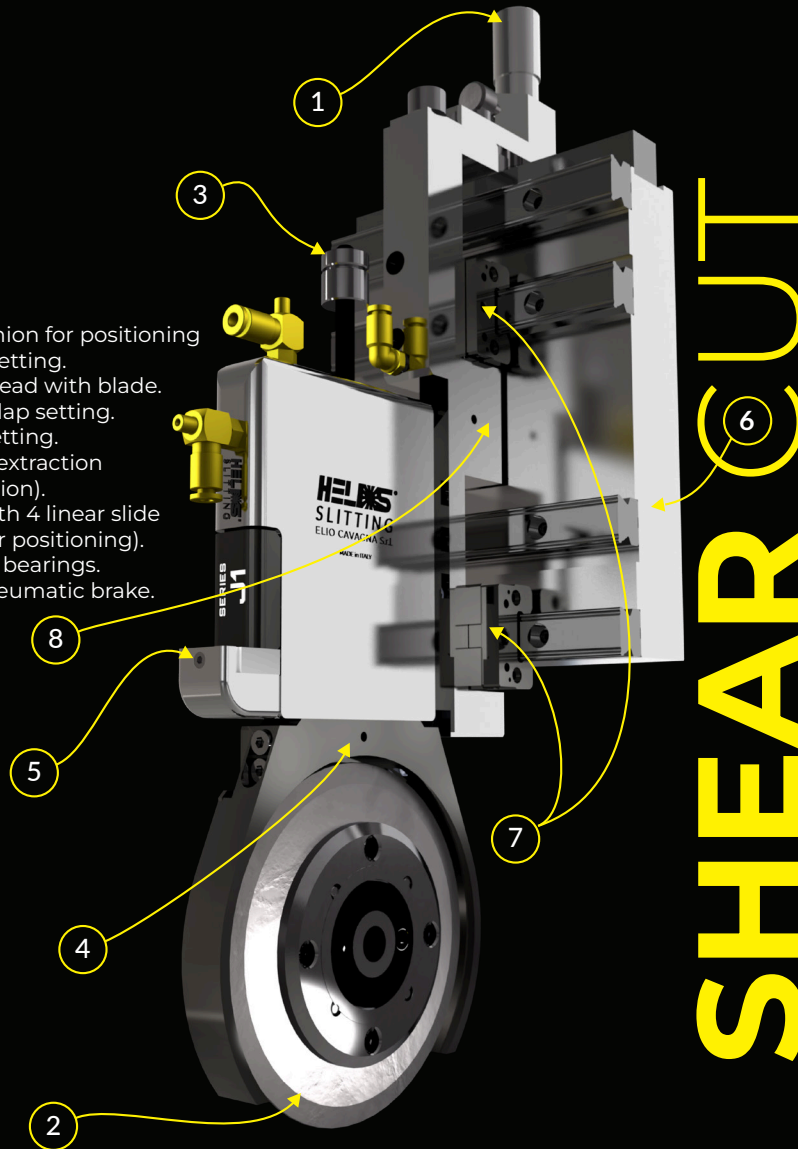
- FELT WITH LUBRIFICATION FOR BLADE CLEANING
- HEAD FOR RAZOR CUT



\* Higher, ask for feasibility  
 \*\*\* Speed depends on bottom knife diameter

### FEATURES

1. Knob with pinion for positioning and side force setting.
2. Knifeholder head with blade.
3. Knob for overlap setting.
4. Cant angle setting.
5. Frontal head extraction (180° head rotation).
6. Guide bar (with 4 linear slide rails and rack for positioning).
7. Double linear bearings.
8. Individual pneumatic brake.



SHEAR CUT

HELIOS  
 SLITTING

## SHEAR CUT TOP MANUAL - SERIES

### J2 | J3

EXCELLENT CUT QUALITY

Designed to allow the operator to find the best settings to obtain the optimum cut quality. The graduated micrometre is used to set the optimal knife overlap which can then be repeated on all the other knife holders. Knife cant angle can be read, easily adjusted and locked. Thanks to the twin linear slides and pneumatic brake knife unit positioning is fast and easy. J2 and J3 are capable of running at high machine speeds without vibration. J2 and J3 can be supplied on our automatic knife setting systems.

#### TECH SPECS

	J2 - 40C	J3L-48C	J3H-75C
MIN. SLIT	40 mm	50 mm	75 mm
BLADE	Ø90 Ø105	Ø130 Ø150	Ø130 Ø150 Ø180 Ø200
MAX. SPEED	1000 mpm ***	1500 mpm	2500 mpm
GUIDEBAR TYPE	4.8579.E	4.8579.E	4.8579.E

#### MATERIALS

PAPER	≤ 300 gsm	≤ 600 gsm	≤ 1500 gsm
LAMINATE	≤ 300 gsm	≤ 600 gsm	≤ 1500 gsm
PLASTIC FILM/SHEET	≤ 0,6 mm	≤ 1 mm	≤ 2 mm *
NONWOVEN	≤ 400 gsm	≤ 600 gsm	≤ 1000 gsm
TEXTILE	ASK	ASK	ASK
ALUMINIUM	≤ 200 micron	≤ 500 micron	≤ 500 micron
RUBBER	ASK	ASK	ASK
FIBERGLASS	≤ 300 gsm	≤ 500 gsm	≤ 1000 gsm



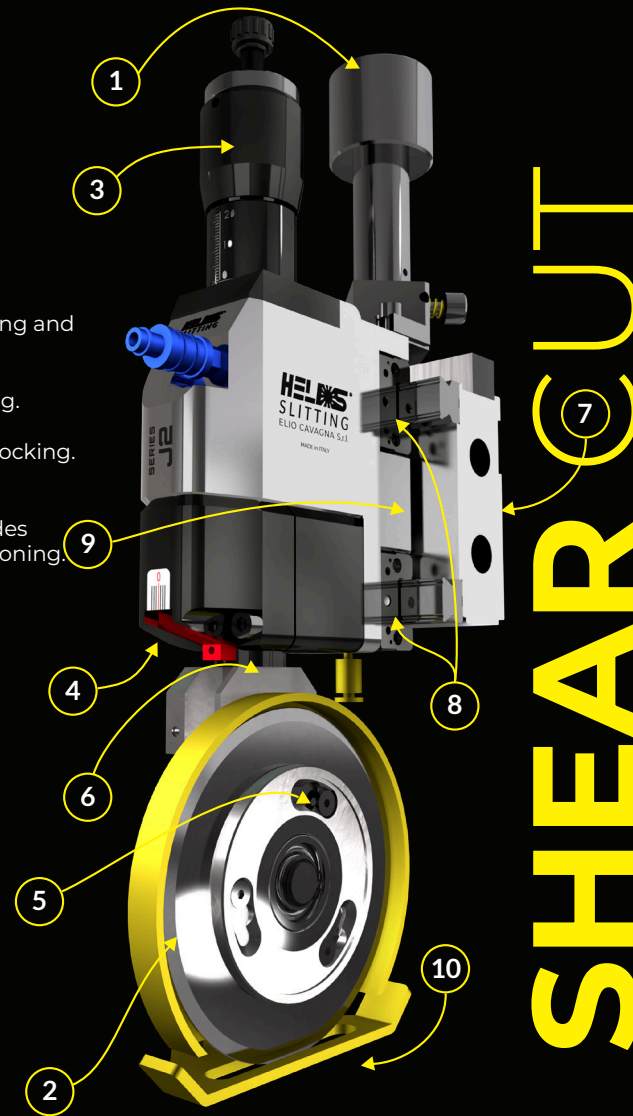
#### OPTIONAL

- FELT WIPER WITH LUBRICATION SYSTEM
- HEAD FOR RAZOR CUT
- PLEXIGLASS SIDE GUARD FOR BLADE
- SPECIAL GUARD FOR DUST EXTRACTION.

\* Higher, ask for feasibility  
\*\*\* Speed depends on bottom knife diameter

#### FEATURES

1. Knob with pinion for positioning and side force setting.
2. Knifeholder head with blade.
3. Graduated knife depth setting.
4. Cant angle setting.
5. Quick change bayonet knife locking.
6. Frontal head extraction (180° head rotation).
7. Guide bar with twin linear slides & full width rack for quick positioning.
8. Double linear bearings.
9. Individual pneumatic brake.
10. Automatic safety guard.



SHEAR CUT



## SHEAR CUT TOP EASY SETTING - SERIES

### J2B | J3B

EXCELLENT CUT QUALITY AND KNIFE LIFE

Ideal solution for applications where blade and counterblade move together (Stj trims, automation or Fast Man). Robustly constructed for long life durability and high speed operations. Thanks to precise and repeatable micrometer knife depth setting, overlap between knife and bottomknife becomes easy and accurate. Individual knife holder cutting side load force is adjusted by a valve and displayed on a gauge.

#### TECH SPECS

	J2B-40C	J3B-48C	J3B-75C
MIN. SLIT	40 mm	50 mm	75 mm
BLADE	ø90 ø105	ø130 ø150	ø130 ø150 ø180 ø200
MAX. SPEED	1000 mpm ***	1500 mpm	2500 mpm
GUIDEBAR TYPE	4.318.E	4.318.E	4.318.E

#### MATERIALS

PAPER	≤ 300 gsm	≤ 600 gsm	≤ 1500 gsm
LAMINATE	≤ 300 gsm	≤ 600 gsm	≤ 1500 gsm
PLASTIC FILM/SHEET	≤ 0,6 mm	≤ 1 mm	≤ 2 mm *
NONWOVEN	≤ 400 gsm	≤ 600 gsm	≤ 1000 gsm
TEXTILE	ASK	ASK	ASK
ALUMINIUM	≤ 200 micron	≤ 500 micron	500 micron
RUBBER	ASK	ASK	ASK
FIBERGLASS	≤ 300 gsm	≤ 500 gsm	≤ 1000 gsm



#### OPTIONAL

- FELT WITH LUBRIFICATION FOR BLADE CLEANING
- HEAD FOR RAZOR CUT
- PLEXIGLASS SIDE GUARD FOR BLADE
- BLADE COVER FOR DUST ASPIRATION

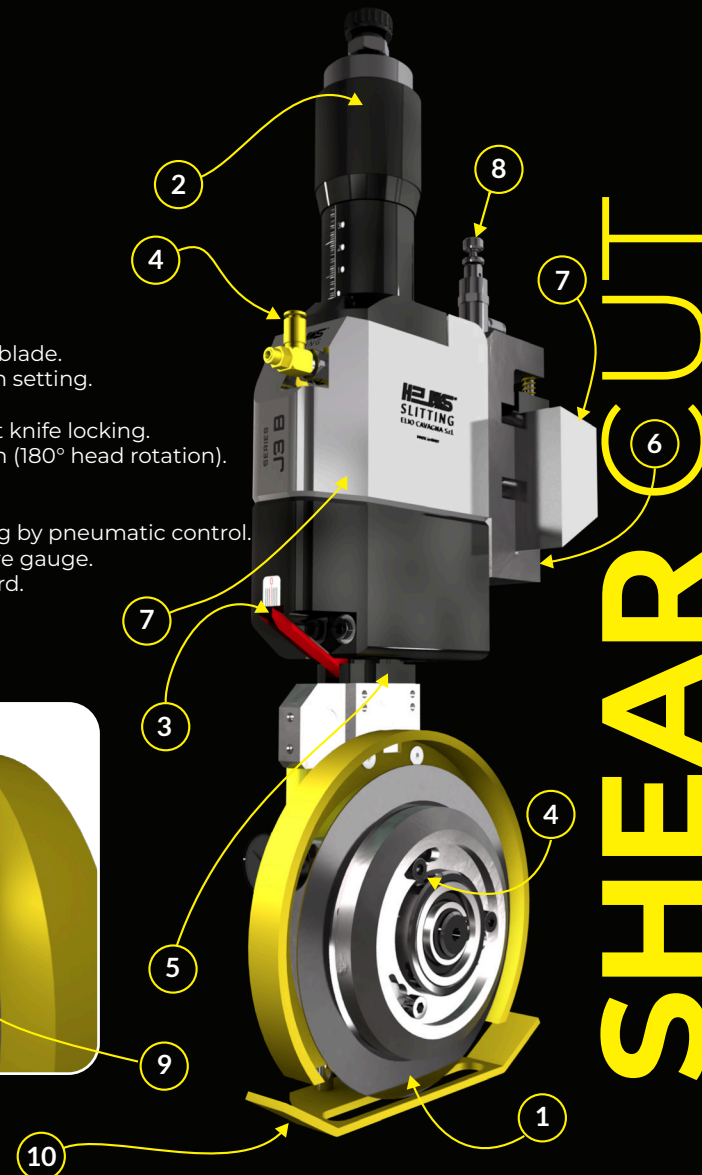
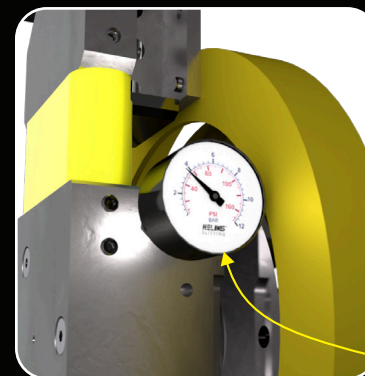
\* Higher, ask for feasibility

\*\*\* Speed depends on bottom knife diameter

#### FEATURES

1. Knifeholder head with blade.
2. Graduated knife depth setting.
3. Cant angle setting.
4. Quick change bayonet knife locking.
5. Frontal head extraction (180° head rotation).
6. Guidebar clamp.
7. Dovetail guidebar.
8. Blade side force setting by pneumatic control.
9. Side load force pressure gauge.
10. Automatic safety guard.

#### PRESSURE GAUGE



HELIOS  
SLITTING

SHEAR CUT

## SHEAR CUT ESSENTIAL - SERIES

### JS2 | JS3

EXCELLENT CUT QUALITY

A quality knife holder at a competitive price. Featuring knife overlap adjustment, cant angle adjustment with graduated scale, automatic safety guard and linear slide, full width rack and pneumatic brake for fast and easy positioning. Can be used to replace older S series knife units.

#### TECH SPECS

**JS2-40C**  
MIN. SLIT 40 mm  
BLADE ø90 ø105  
MAX. SPEED 600 mpm \*\*\*  
GUIDEBAR TYPE 4.7282.E

#### JS3-48C

50 mm  
ø130 ø150  
1000 mpm  
4.7283.E

#### JS3-75C

75 mm  
ø130 ø150  
1200 mpm  
4.7283.E

#### MATERIALS

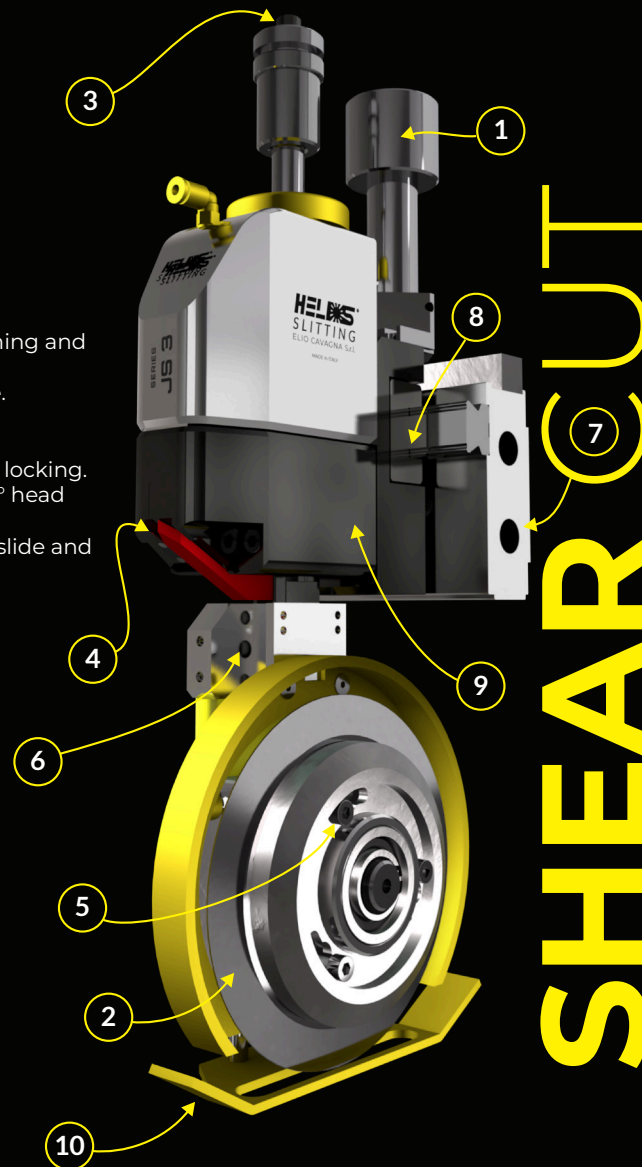
PAPER ≤ 350 gsm  
LAMINATE ≤ 350 gsm  
PLASTIC FILM/SHEET ≤ 0,4 mm  
NONWOVEN ≤ 400 gsm  
TEXTILE ASK  
ALUMINIUM ≤ 200 micron  
RUBBER ASK  
FIBERGLASS ≤ 300 gsm



\* Higher, ask for feasibility  
\*\*\* Speed depends on bottom knife diameter

#### FEATURES

1. Knob with pinion for positioning and side force setting.
2. Knifeholder head with blade.
3. Knob for overlap setting.
4. Cant angle setting.
5. Quick change bayonet knife locking.
6. Frontal head extraction (180° head rotation).
7. Guide bar with single linear slide and full width rack..
8. Single linear bearing.
9. Individual pneumatic brake.
10. Automatic safety guard.





## SHEAR CUT BASIC - SERIES

# JCS2 | JCS3

EXCELLENT CUT QUALITY

Basic knife holder with dovetail bar and mechanical locking.  
Knife overlap adjustment & cant angle adjustment with graduated scale to achieve the optimum setting for your material.  
Most suited to applications where slit width changes are minimal.  
Can be used to replace some old series knife units.

## TECH SPECS

	JCS2-40C	JCS3-48C	JCS3-75C
MIN. SLIT	40 mm	50 mm	75 mm
BLADE	ø90 ø105	ø130 ø150	ø130 ø150
MAX. SPEED	600 mpm***	800 mpm	800 mpm
GUIDEBAR TYPE	4.318.E	4.318.E	4.318.E

## MATERIALS

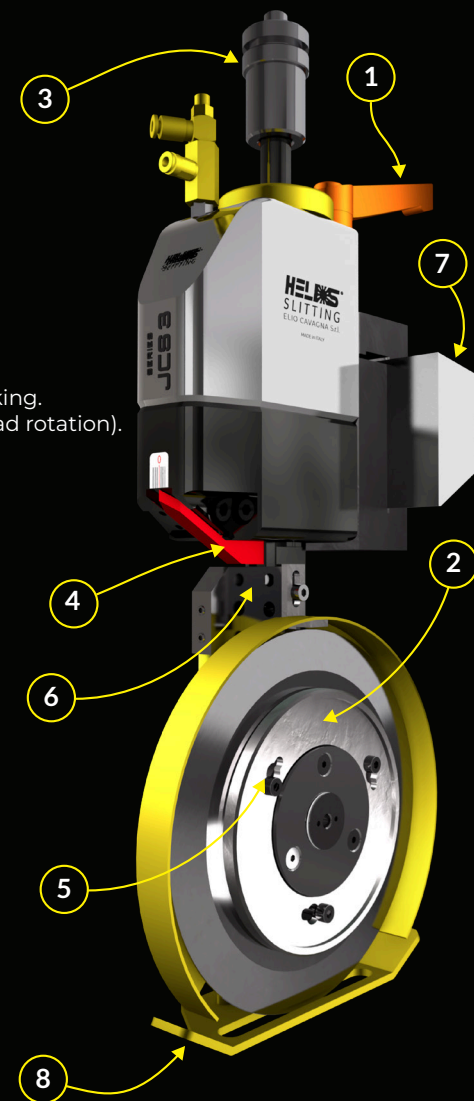
PAPER	≤ 350 gsm	≤ 600 gsm	≤ 800 gsm
LAMINATE	≤ 350 gsm	≤ 600 gsm	≤ 800 gsm
PLASTIC FILM/SHEET	≤ 0,4 mm	≤ 1 mm	≤ 1,2 mm
NONWOVEN	≤ 400 gsm	≤ 600 gsm	≤ 800 gsm
TEXTILE	ASK	ASK	ASK
ALUMINIUM	200 micron	200 micron	300 micron
RUBBER	ASK	ASK	YES
FIBERGLASS	≤ 300 gsm	≤ 500 gsm	≤ 700 gsm

\* Higher, ask for feasibility

\*\*\* Speed depends on bottom knife diameter

## FEATURES

1. Position locking Knob.
2. Knifeholder head with blade.
3. Knob for overlap setting.
4. Cant angle setting.
5. Quick change bayonet knife locking.
6. Frontal head extraction (180° head rotation).
7. Guide bar.
8. Automatic safety guard.

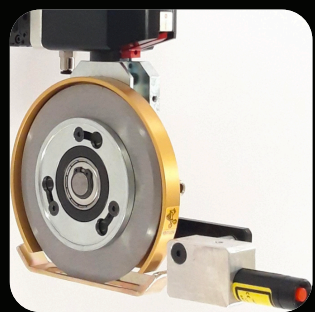


# SHEAR CUT

HELIOS  
SLITTING

SHEAR CUT  
OPTIONS LIST

LASER TO CHECK  
BLADE POSITION



PLEXIGLASS SIDE  
COVER FOR BLADE



COVER FOR  
DUST EXTRACTION



FELT FOR  
BLADE LUBRICATION



INTERCHANGEABILITY  
WITH RAZOR BLADE



# SCORE CUT

Pressure cut (rotary crush cut) is a solution where a blade cuts against a hardened anvil. It is the right solution for textile, rubber or soft materials.

## GOALS

- EASY SETTING
- FOR SOFT MATERIALS WITH HIGH THICKNESS
- EASY INSTALLATION



## SCORE CUT MAIN FEATURES

### EK / JCS / J3H

EXCELLENT CUT QUALITY

Simple pneumatic holder easy to set , can be used both on basic manual positioning systems up to automatic ones.

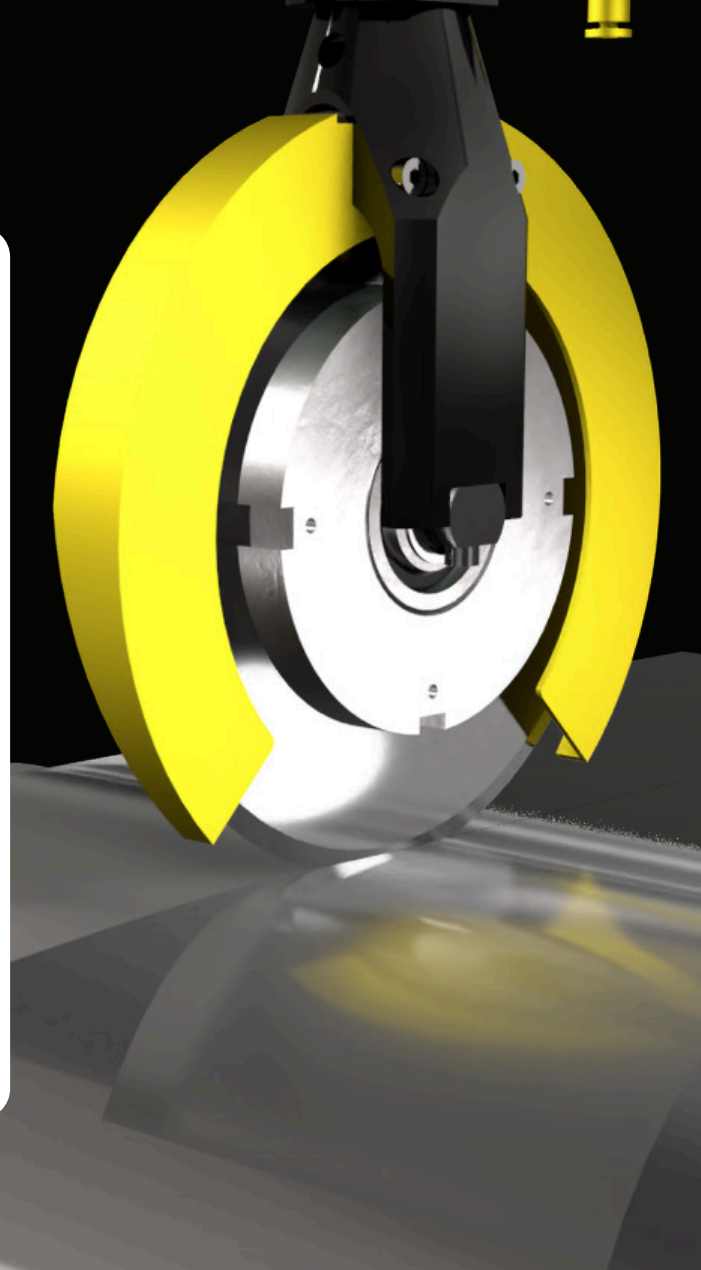
#### TECH SPECS

	<b>EK1.25 CS</b>	<b>EK1.25</b>	<b>EK30</b>	<b>EKJ30</b>	<b>JCS3- TP48</b>	<b>J3H- TP48</b>
MIN. SLIT	25 mm	25 mm	30 mm	40 mm	50 mm	80 mm
BLADE	Ø100	Ø100	Ø100	Ø100	Ø130 Ø150 Ø180	Ø130 Ø150 Ø180
MAX. SPEED	400 mpm***	400 mpm***	400 mpm***	400 mpm***	500 mpm***	500 mpm***
GUIDEBAR TYPE	4.318.E	3.15454.E	4.318.E	4.8579.E	4.318.E	4.8579.E
VERTICAL FORCE	45 kg	45 kg	25 kg	25 kg	80 kg	85 kg

NOT SUGGESTED FOR PAPER AND PLASTIC FILM



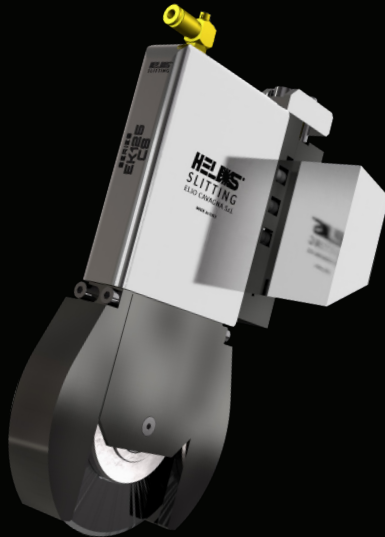
\*\*\* Speed depends on cylinder diameter



## SCORE CUT MAIN FEATURES

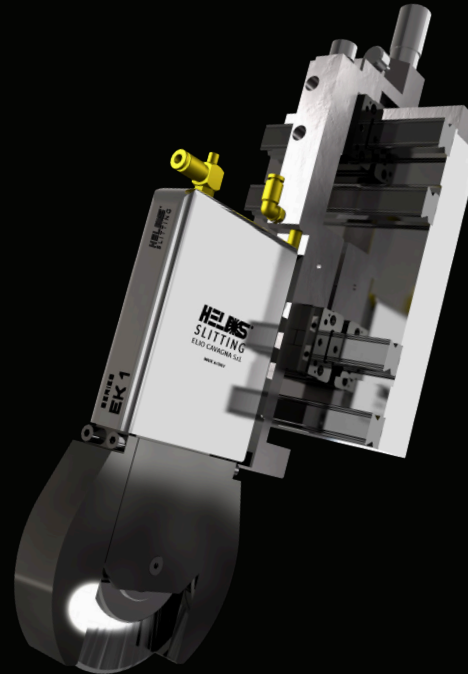
### EK 1.25 CS

1. Dovetail guidebar.
2. Clamp Screw to lock the knife holder to the guide bar.
3. Air intake for blade descent.
4. Body with double piston for blade descent.
5. Blade safety guard.
6. Knife holder head with double bearing.



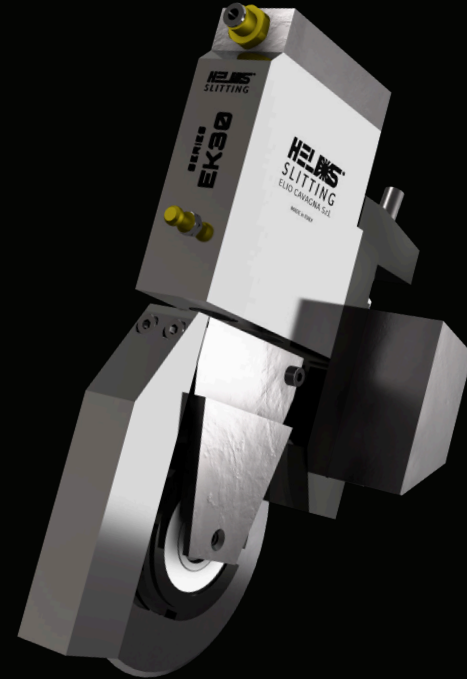
### EK1.25

1. Guidebar with double rail/double linear bearing.
2. Pneumatic brake.
3. Air intake for blade descent.
4. Body with double piston for blade descent.
5. Blade safety guard.
6. Knife holder head with double bearing.
7. Pinion knob for fast positioning.



### EK30

1. Dovetail guidebar.
2. Clamp Screw to lock the knife holder to the guide bar.
3. Air intake for blade descent.
4. Body with double piston for blade descent.
5. Frontal blade cover
6. Knife holder head with double bearing.



SHEAR CUT  
SCORE CUT  
RAZOR CUT

SCORE CUT

## SCORE CUT MAIN FEATURES

### EKJ30

1. Guidebar with double rail/double linear bearing.
2. Carriage for knifeholder movement.
3. Knob with pinion for movement.
4. Pneumatic brake.
5. Air intake for blade descent.
6. Body with double piston for blade descent.
7. Frontal blade cover.
8. knife holder head with double bearing.



### JCS3-TP48

1. Dovetail guidebar.
2. Guide clamp.
3. Handle for guide lock.
4. Air intake for blade descent.
5. Blade safety guard.
6. Stroke setting by knob.



### J3H-TP48

1. Guidebar with double rail/double linear bearing.
2. Pneumatic brake.
3. Air intake for blade descent.
4. Body with double piston for blade descent.
5. Blade cover.
6. Stroke setting by knob.



SCORE CUT

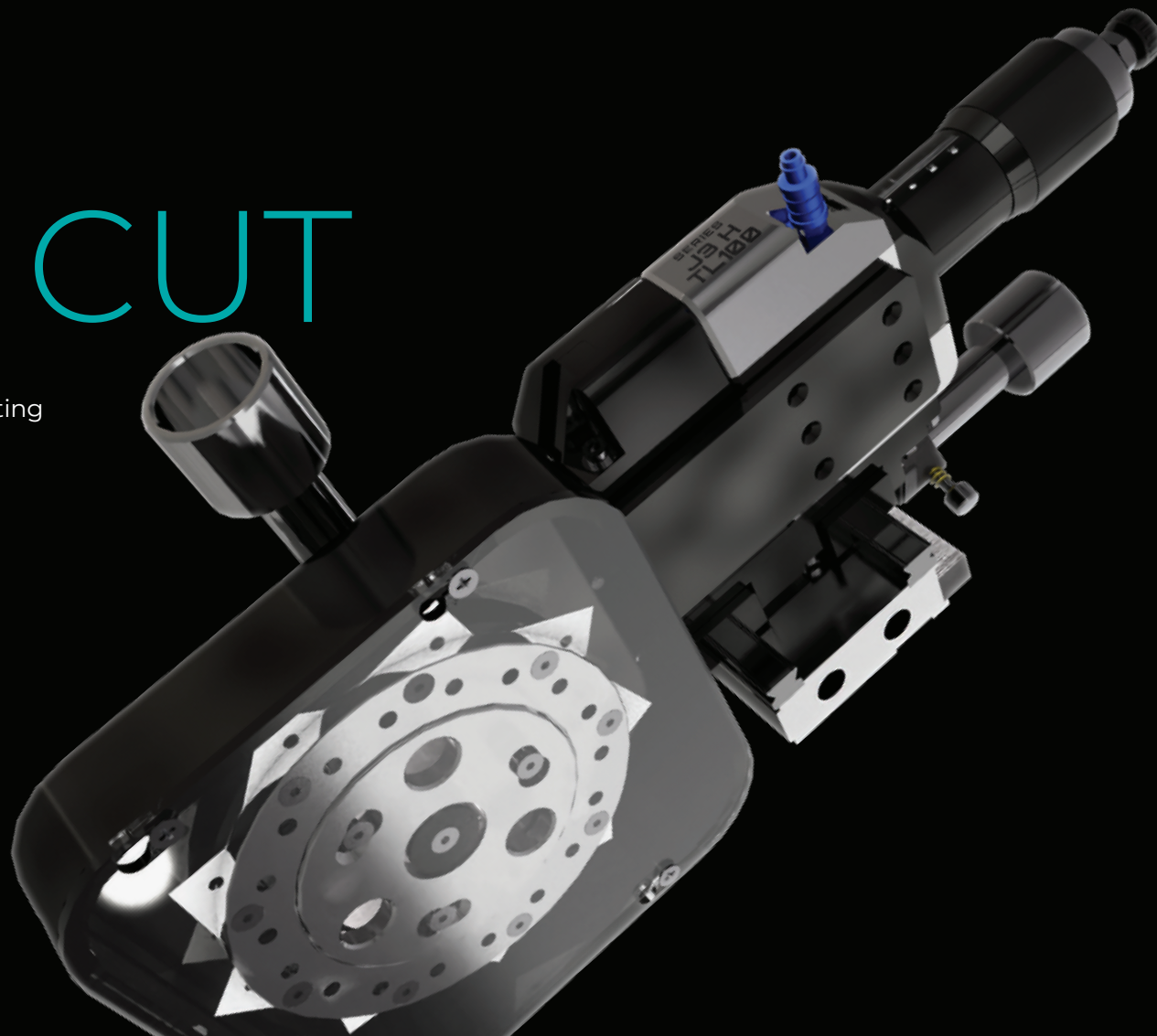


# RAZOR CUT

Our razor cut solutions are user friendly, of fast setting and allow to work in complete safety.

## GOALS

- EASY SETTING
- EASY INSTALLATION
- SHIFT FROM RAZOR TO SHEAR
- FULL SAFETY PROTECTION

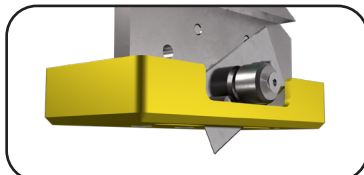
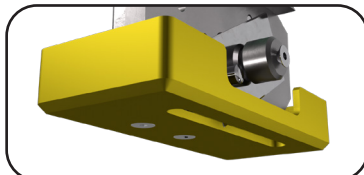


## RAZOR CUT MAIN FEATURES

### SAFETY

#### BLADE

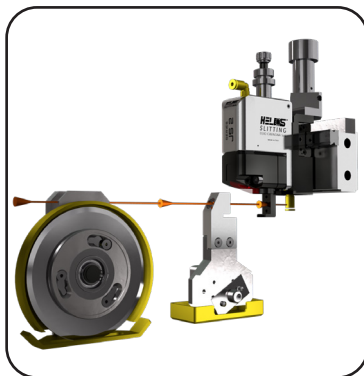
All our razors are complete of a safety system that allows the operator to work without the risk to touch the blade.



### INTERCHANGEABILITY

#### SHEAR / RAZOR

Possible to switch from razor to shear and vice versa. Thanks to this option it is possible to have on the same cutting station two different cutting typologies. The change from razor to shear or shear to razor can be made at any time and it is not necessary at initial installation.



### POSITIONING KNOB

#### COMPLETE WITH PNEUMATIC BRAKE

Fast and easy position setting. Safe lock with pneumatic brake.



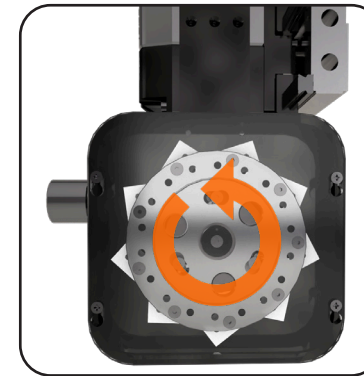
### MULTI BLADE

#### REVOLVER

With our **revolver solution** you can **work continuously**.

By rotating the cassette the worn razor blade is replaced with a new blade. If the razor disk is removed multiple razor blades can be changed at the same time on the bench.

As the machine does not need to be stopped for individual razor blades to be replaced, machine running time and productivity is massively increased (format change without stopping cut only with tangential web passage).





## RAZOR CUT SERIES

# TL - RAZOR HEAD

MATCHING WITH ALL KNIFEHOLDERS J SERIES

Our razor cut is completely safe thanks to its automatic razor protection guard. Quick manual positioning utilising slide / bearing and pinion knob. This single razor head can be assembled on each knifeholder, also to substitute shear cut head with circular blade.

## TECH SPECS

### TL - RAZOR HEAD

MIN. SLIT	20/40/50 mm
BLADE	43x22x0,3mm
MAX. SPEED	Depends on razor blade material
GUIDEBAR TYPE	Depends on knifeholder model

## MATERIALS

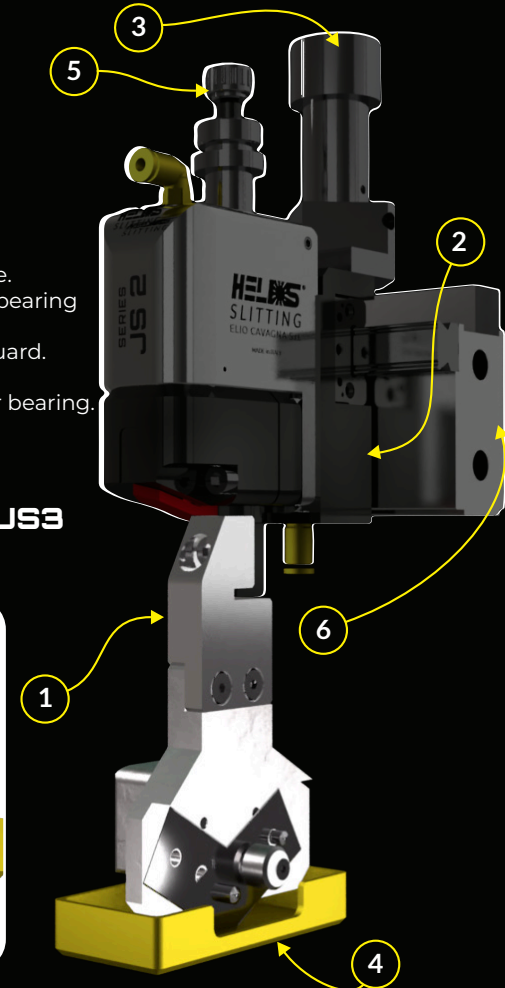
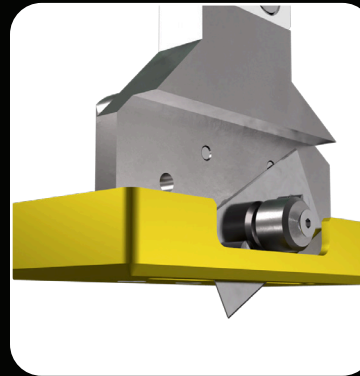
PAPER	—
LAMINATE	—
PLASTIC FILM/SHEET	≤ 30 micron
NONWOVEN	—
TEXTILE	—
ALUMINIUM	ASK
RUBBER	—
FIBERGLASS	—

## FEATURES

1. Frontal extraction of the head.
2. Inbuilt pneumatic locking brake.
3. Manual positioning with linear bearing and pinion knob.
4. Automatic razor blade safety guard.
5. Razor blade depth adjustment.
6. Guidebar with single rail / linear bearing.

## MATCH WITH:

J1 J2 JS2 J3 JS3



# RAZOR CUT

HELIX  
SLITTING

SHEAR CUT  
SCORE CUT  
RAZOR CUT

## RAZOR CUT SERIES

# J3H - TL 100C

EXCELLENT CUT QUALITY

With our revolver you can work continuously. By rotating the cassette the worn blade is replaced with a new. If the head is removed multiple razor blades can be changed at the same time on the bench. As the machine does not need to be stopped for individual replacement, machine running time and productivity is massively increased\*.

## TECH SPECS

### J3H - TL 100C

MIN. SLIT	100 mm
BLADE	43x22x0,3mm
MAX. SPEED	Depends on razor blade material
GUIDEBAR TYPE	4.8579.E

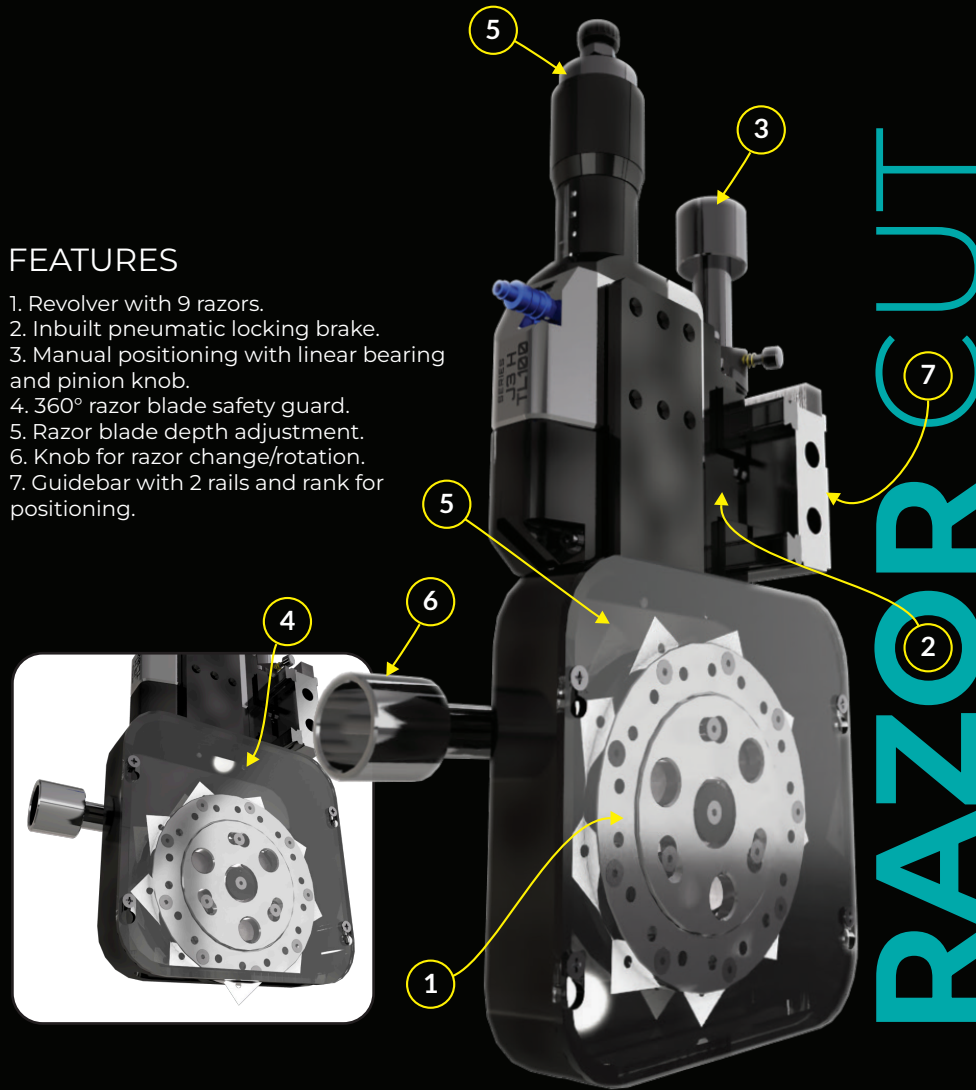
## MATERIALS

PLASTIC FILM	≤ 30 micron
--------------	-------------

\* only with tangential web passage

## FEATURES

1. Revolver with 9 razors.
2. Inbuilt pneumatic locking brake.
3. Manual positioning with linear bearing and pinion knob.
4. 360° razor blade safety guard.
5. Razor blade depth adjustment.
6. Knob for razor change/rotation.
7. Guidebar with 2 rails and rank for positioning.



RAZOR CUT

## RAZOR CUT SERIES

# J3H - RB

SUGGESTED TO CUT HIGH THICKNESS PLASTIC SHEETS OR RUBBER .

Our razor cut is completely safe thanks to its automatic razor protection guard. Quick manual positioning utilising slide / bearing and pinion knob.

## TECH SPECS

MIN. SLIT	80 mm
BLADE STYLE: STANLEY	60x19x0,65mm
MAX. SPEED	Depends on razor blade material
GUIDEBAR TYPE	4.8579.E
VERTICAL FORCE	80 KG

## J3H - RB

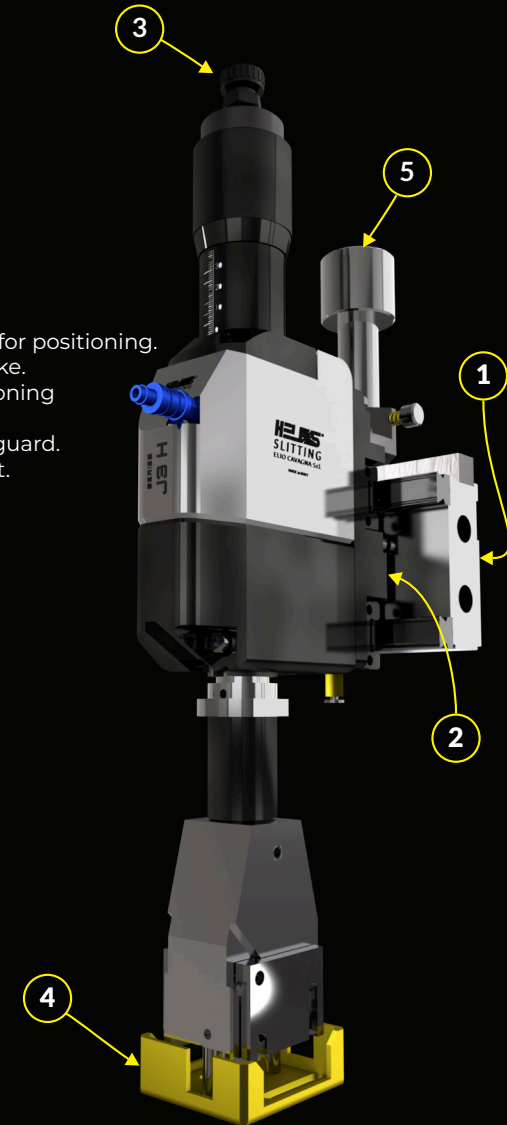
## MATERIALS

PLASTIC SHEET	> 2 up to 12 mm
---------------	-----------------



## FEATURES

1. Guidebar with 2 rails and rank for positioning.
2. Inbuilt pneumatic locking brake.
3. Fast & accurate manual positioning by pinion knob.
4. Automatic razor blade safety guard.
5. Razor blade depth adjustment.



# RAZOR CUT

HELIX  
SLITTING



**ELIO CAVAGNA SRL**

Via Curioni, 1, 26832 Galgagnano (LO) ITALY | tel. +39 0371 68099  
website. [www.heliosslitting.com](http://www.heliosslitting.com) | mail. [info@heliosslitting.com](mailto:info@heliosslitting.com)

ADV AGENCY

