

# TAKE-OFF BLOCKS

## SERIES MX

MX2 port: G1/2 - MX3 port: G1  
Modular



- Compact design
- Available with or without VNR (no return valve)
- Take-off block for intermediate supply with double outlet

The Take-off blocks, when equipped with a no return valve, can be used to bleed non lubricated air.

The Series MX has been realized to offer a multi-sector solution that guarantees saving in terms of installation time, space and costs. A special configurator, available on Camozzi website at <http://shop.camozzi.com> (sec. Configurators), allows the customer to choose the most suitable solution for his application, selecting single components or by configuring assembled FRLs.

### General Data

<b>Construction</b>	Modular, compact, diaphragm-type
<b>Ports</b>	MX2: G1/2 MX3: G1
<b>Take-off ports</b>	MX2: G1/2 MX3: G1
<b>Mounting</b>	In-line Wall-mounting (by means of clamps)
<b>Working temperature</b>	-5°C ÷ 50°C up to 16 bar (with the dew point of the fluid lower than 2°C at the min. working temperature) -5°C ÷ 60°C up to 10 bar (with the dew point of the fluid lower than 2°C at the min. working temperature)
<b>Nominal flow at 6 bar with <math>\Delta p = 1</math> bar</b>	MX2-1/2-B00 = 6800 NL/min MX2-1/2-B01 = 5700 NL/min MX3-1-B00 = 14500 NL/min MX3-1-B01 = 10500 NL/min
<b>Fluid</b>	Compressed air

TAKE-OFF BLOCKS  
**SERIES MX - CODING EXAMPLES**

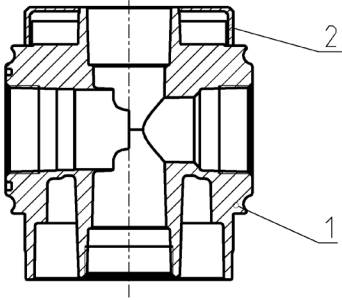
**Coding Example**

<b>MX</b>	<b>2</b>	<b>-</b>	<b>1/2</b>	<b>-</b>	<b>B</b>	<b>00</b>	<b>-</b>	<b>LH</b>
<b>MX</b>	SERIES							
<b>2</b>	SIZE 2 = G1/2 3 = G1							
<b>1/2</b>	PORT 2 = G1/2 1 = G1							
<b>B</b>	TAKE-OFF BLOCK							
<b>00</b>	DESIGN TYPE 00 = Without no return valve (standard) 01 = With no return valve 02 = Without no return valve, with double O-ring seat							
<b>LH</b>	FLOW DIRECTION = From left to right (standard) LH = From right to left							

For the assembly of a single component with fixing flanges or wall-mounting, see the section "FRL Series MX Assembled".

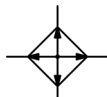
**Take-off blocks Series MX - materials**

PARTS	MATERIALS
1 = Body	Aluminium
2 = Covering	Polyacetal
Seals	NBR



Series MX take-off blocks - dimensions

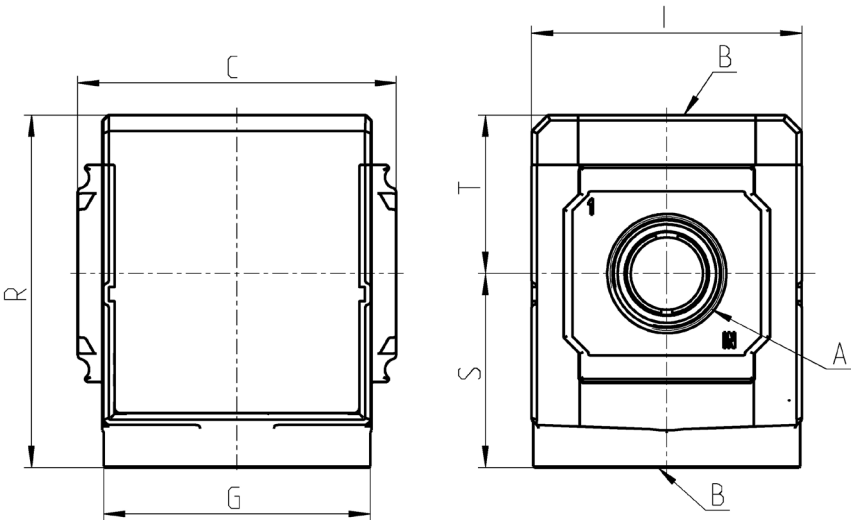
BL01 = Take-off block  
BL02 = Take-off block with VNR



BL01



BL02



Mod.	A	B	C	G	I	R	S	T	Weight [kg]
MX2-1/2-B*	G1/2	G1/2	70	65	68	86	47,5	38,5	0.4
MX3-1-B*	G1	G1	89,5	75	76	99	54,5	44,5	0.6

\* To complete the code see the Coding Example.

Use of the take-off block MX...- B02

The take-off block with double O-ring seat is particularly suitable when Series MX modules have to be supplied through the same pressure source.  
The modules which are connected to the left side are of LH kind.

