

Screw-in cartridge pressure relief and reducing valves

Modular cartridge for B2 (C-10-2), B3 (C-10-3) and C2 (VC12-2) cavities

Functional Description

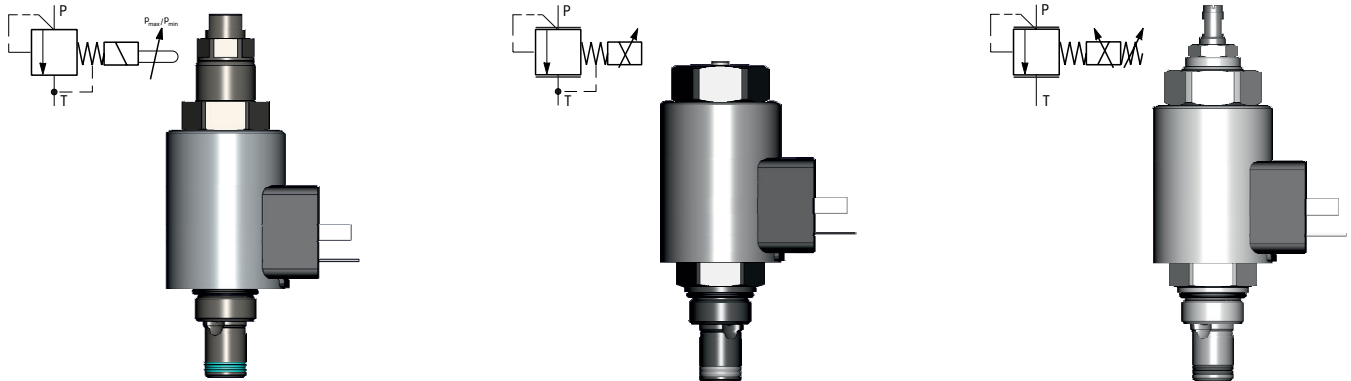
Kit principle: three types of control (pilot) valves suitable for mounting in three two main stages – for relief valves and pressure reducing valves

Pilot stage:

SR1E2-A2_5193
switchin

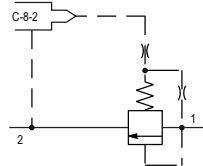
SR1P2-A2_5122
proportional

SRN1P1-A2_5137
proportional, inverted

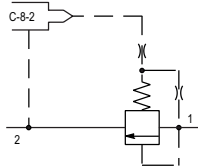


Main stage:

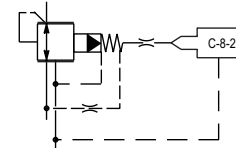
SR6H-C2
main stage for
relief valve



SR6H-B2
main stage for
relief valve



SP6H-B3
main stage for
reduction valve



RANGE OF PRESSURE **RELIEF** VALVES

CAVITY C2 (VC12-2)

CAVITY B2 (C-10-2)

RANGE OF PRESSURE **REDUCING** VALVES

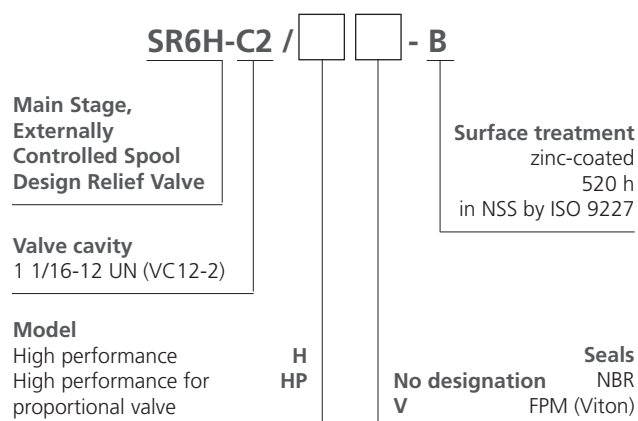
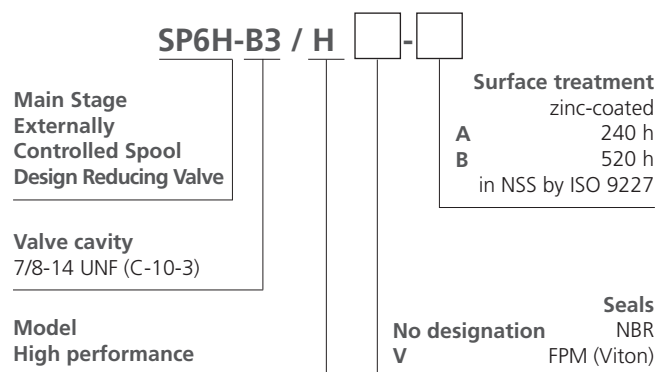
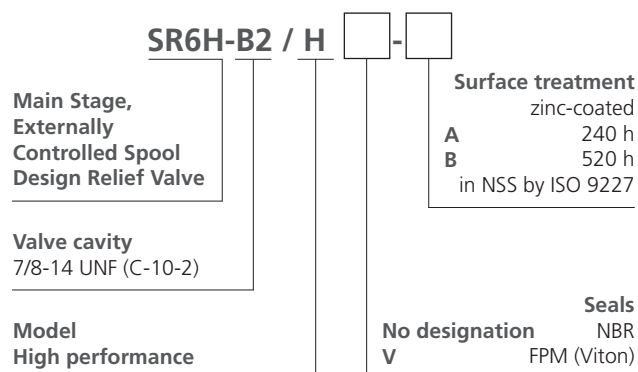
CAVITY B3 (C-10-3)

Technical Features

- › High variability of modular valves
- › Unified cartridge B2 (C-10-2) with 7/8-14 UNF thread for mounting pressure relief valves, including mechanically adjustable
- › Unified cartridge B3 (C-10-3) with 7/8-14 UNF thread for mounting pressure reducing valves, including mechanically adjustable
- › Unified cartridge C2 (VC12-2) with 1 1/16-12 UN thread for mounting pressure relief valves, including mechanically adjustable
- › Same control valves for pressure relieving and pressure reducing valves
- › Reduce inventory while maintaining a wide range of valve types
- › Control (pilot) stages can be used as directly controlled pressure relief valves for low volume flow rates up to 1.5 l/min

Ordering code of the main stages

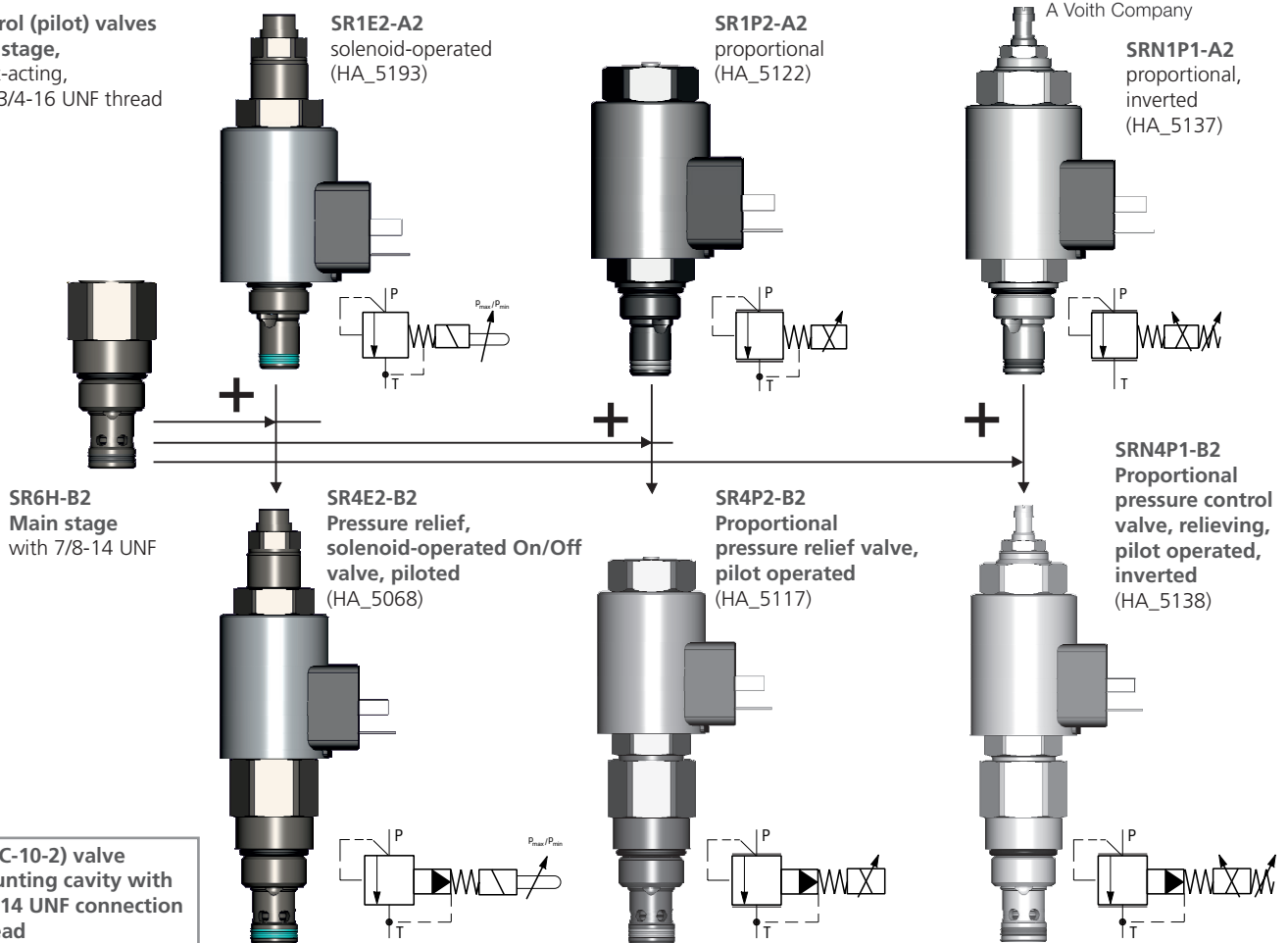
Name	Cavity	Specification	Ordering code
Main stage for relieving valves	B2	SR6H-B2/H-B	40459600
		SR6H-B2/HV-A	29248100
Main stage for relieving valves - only for switching valve SR4E2-C2	C2	SR6H-C2/H-B	47000604
Main stage for relieving valves - only for proportional valve SR4P1-C2 and SRN4P1-C2	C2	SR6H-C2/HP-B	47004749
Main stage for reducing valves	B3	SP6H-B3/H-B	40459700
		SP6H-B3/HV-A	29248000



For more information about pilot valves and resulting kits see related Datasheets.

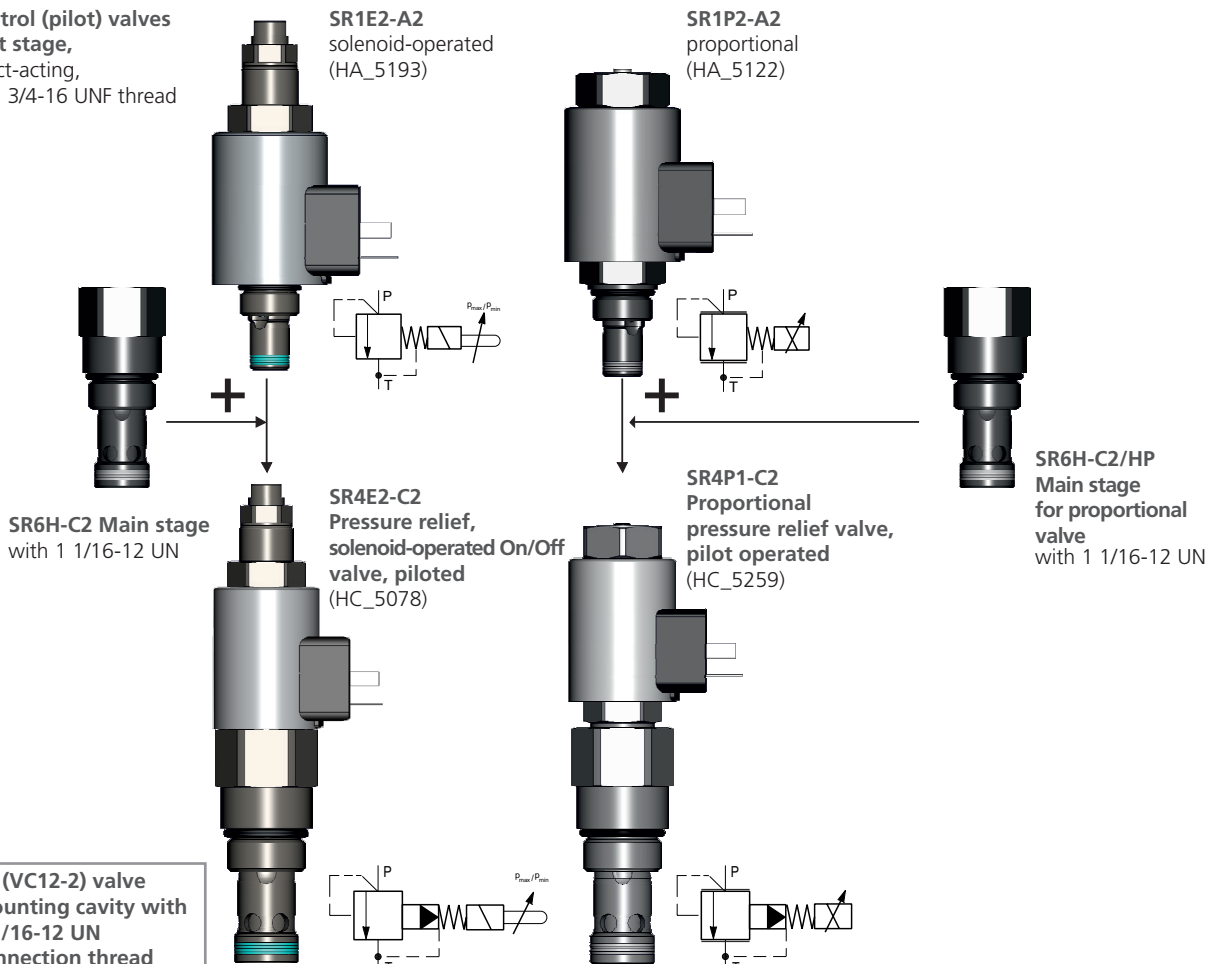
Control (pilot) valves
Pilot stage,
direct-acting,
with 3/4-16 UNF thread

SCREW-IN CARTRIDGE PRESSURE RELIEF VALVES INTO CAVITY B2



Control (pilot) valves
Pilot stage,
direct-acting,
with 3/4-16 UNF thread

SCREW-IN CARTRIDGE PRESSURE RELIEF VALVES INTO CAVITY C2



**Control (pilot) valves,
Pilot stage**
direct acting,
with 3/4-16 UNF thread

SCREW-IN CARTRIDGE PRESSURE REDUCING VALVES INTO CAVITY B3

SP6H-B3
Main stage
with 7/8-14 UNF

**B3 (C-10-3) valve
mounting cavity with
7/8-14 UNF connection
thread**

SR1E2-A2
solenoid-operated
(HA_5193)

SR1P2-A2
proportional
(HA_5122)

SRN1P1-A2
proportional
inverted
(HA_5137)

SP4E1-B3
Pressure reducing-relieving
solenoid-operated On/Off
valve, piloted
(HA_5074)

SP4P2-B3
Proportional pressure
reducing – relieving
valve, pilot operated
(HA_5123)

SPN4P1-B3
Proportional
pressure control
valve,
reducing-relieving,
pilot operated,
inverted
(HA_5139)

