

Pulsed Blow Valve BNP-U Series



Reduced by pulses, Energy is Conserved



Frequency adjusting knob

Frequency adjustment is easy with 1 knob rotation.

Flexible mounting direction

It can be installed in any direction, and can be installed anywhere.

Air reduction rate*

75%

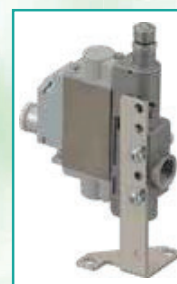


17 mm



With air intake push-in fitting

Power supply not required



With mounting plate

*Option

Thin and Compact Design

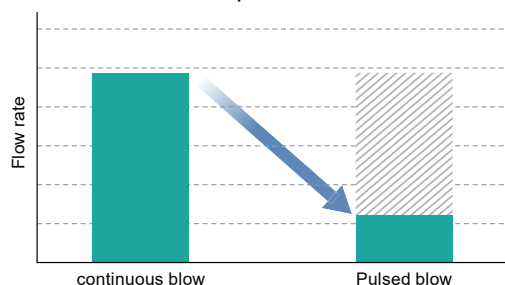
Thin and can be installed even in narrow places.

Unitized type

BNP-U Series

Economy through air reduction

Reduction of **75%** compared with continuous blow



*This is a reference value under CKD test conditions.

Energy can be reduced by reducing air.

Item	Continuous blow	Pulsed blow
Air consumption per product (Pressure: 0.5MPa, frequency: 10Hz, nozzle hole diameter: ø2.5)	243 L/min	61 L/min
Annual air consumption (Working days: 250, working hrs.: 8/day)	29,160 m ³	7,320 m ³ (75% Reduction)
Annual CO ₂ Emissions	1.75t-CO ₂	0.44t-CO ₂
Annual energy consumption	4,053 kWh	1,017 kWh

When replaced by 1 pulse blower

1.31t-CO₂/Year
Reduction

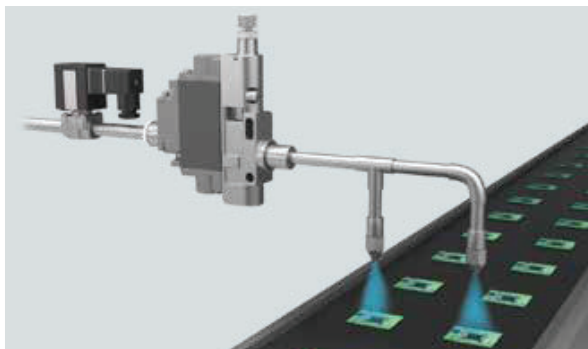
Reference

Compressed air 1 m³ per CO₂ Emissions: 60 g

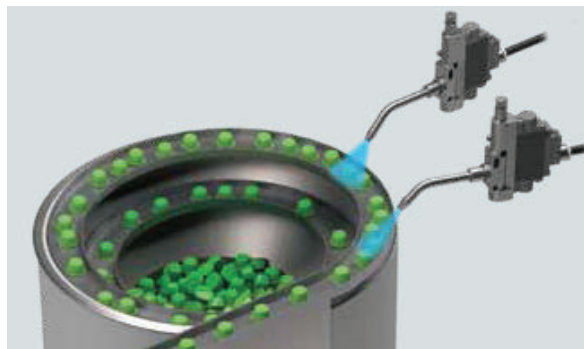
CKD Corporation

CC-1641AA

*For image purposes.



Dirt removal on workpieces on the conveyor



Assists in the parts feeder

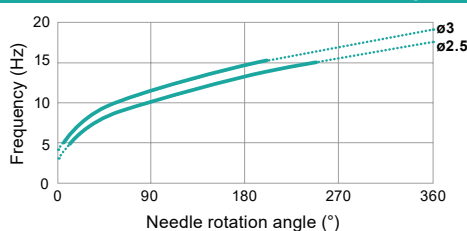
Specifications

Item		BNP-U (unit type)
Working fluid		Compressed air ^{*1}
Working pressure MPa		0.25 to 0.7
Proof pressure MPa		1.05
Ambient temperature °C		-5 to 50 (no freezing)
Fluid temperature °C		5 to 50
Pulse frequency range Hz		5 to 15 ^{*2}
Port size	Supply port	ø8 Push-in fitting
	Blow port	Rc1/4
Nozzle hole diameter mm		-
Weight g		130

*1: Install the dryer, filter and oil mist filter on the primary side and remove water or oil.

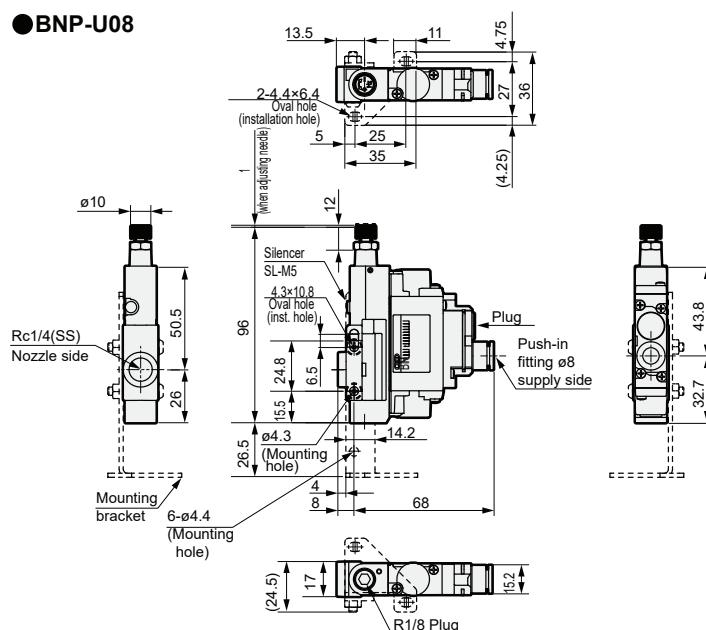
*2: Pressure: 0.5 MPa, performance of CKD measurement circuit.

Freq. characteristics for needle rotation angle

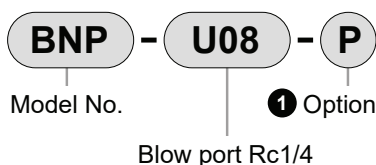


Dimensions

●BNP-U08



How to Order



1 Option

Code	Description
Blank	None
P	Mounting plate included

Model No. of single mounting plate

BNP-MOUNT-PLATE-KIT

*Mounting plate, 2 mounting screws, 2 plain washers, 2 nuts

Safety Precautions

- Be sure to wear protective eyewear and earplugs to prevent scattered objects from entering the eyes when blowing air or cause noise-induced hearing loss.
- Leaving the unit in a dusty or flying place may cause malfunction due to penetration into the interior or clogging of the silencer.
- Do not apply excessive rotation torque when adjusting the needle.
- It can be used to remove dry deposits, assist in workpiece transfer, etc. Confirm before use that moisture or oil is removed.
- Read the instruction manual for proper use of this product.

The goods and/or their replicas, the technology and/or software found in this catalog are subject to complementary export regulations by Foreign Exchange and Foreign Trade Law of Japan. The law requires a license from Ministry of Economy, Trade and Industry to export them.

CKD Corporation

[Website]
<https://www.ckd.co.jp/en/>

Head Office • Plant
Tokyo Office
Osaka Office

2-250, Oujii, Komaki, Aichi 485-8551	TEL(0568)77-1111	FAX(0568)77-1123
4F, Bunkahousou Media Plus, 1-31-1, Hamamatsu-cho, Minato-ku, Tokyo 105-0013	TEL(03)5402-3620	FAX(03)5402-0120
6F, PMO EX Shin-Osaka, 4-2-10 Miyahara, Yodogawa-ku, Osaka 532-0003	TEL(06)6396-9630	FAX(06)6396-9631

● Specifications are subject to change without notice.
© CKD Corporation 2024 All copy rights reserved.

2024.12