



## **Stromag Couplings Set Standards**



 **Stromag**<sup>®</sup>  
Altra Industrial Motion



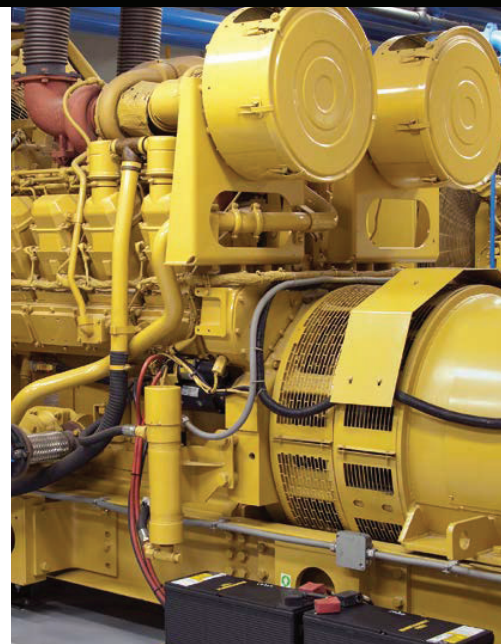
## STANDARD AND SPECIAL EXECUTIONS

We at Stromag know that systems subject to torsional vibrations can only be operated with the correct coupling. Precise calculation of the complete drive and its elements is critical for the coupling selection.

We have developed with the requirements of our customers and have designed a new, versatile product portfolio.

For more information about our flexible couplings visit

[www.stromag.com](http://www.stromag.com)



### Stromag Periflex® TT

Nominal Torque 25 – 20,500 Nm



#### Periflex® TT/-NA Shaft coupling The robust original

A compound of rubber and fabric characterizes this coupling. High elasticity and durability is the result. Precise setup and vulcanisation is the key to success.

Configurations available with emergency drives, brake discs, brake drums, and spacers to simplify pump removal.

#### Application:

Steel mills, crane drives, roller tables, piston driven pumps, motor drives

### Stromag Periflex® VN

Nominal Torque 160 – 63,000 Nm



#### Periflex® VN Disc Coupling Simple setup

The coupling disc is a "plug-in" design with connection ring. Blended elastomers provide stability.

Execution AFL also available with bearing in SAE-housing

#### Application:

Generator systems, RTO, main drives, rail drives, compressors

### Stromag Periflex® CS

Nominal Torque 480 – 14,800 Nm



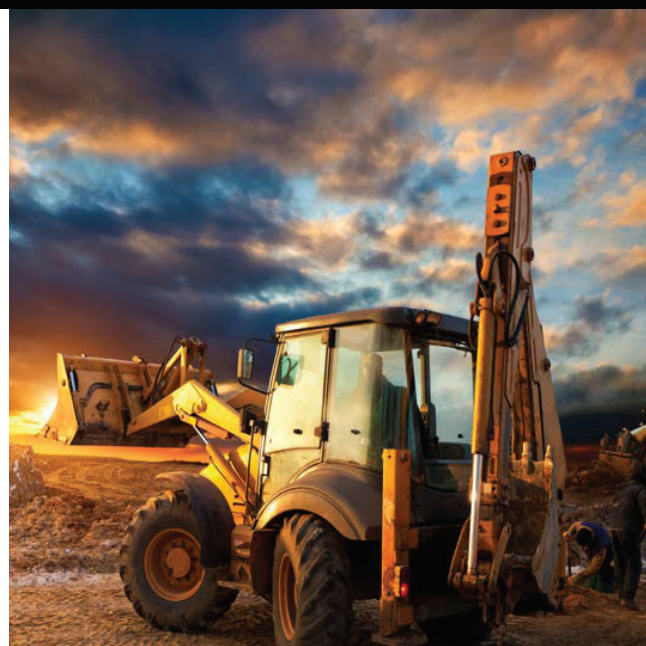
#### Periflex® CS Shaft Coupling Reaction force control

A flexible ring element absorbs torsional impacts. Axial and radial loads are carried by wear-resistant bearings.

The appropriate combination of both is our achievement.

#### Applications:

Generator systems, test benches, marine main and auxiliary drives, Off-Road, Locomotive drive (propulsion)



## Stromag Vector®

Nominal Torque 6,600 – 22,500 Nm



### Stromag Vector® Coupling The Evolution

The new Stromag Vector® coupling represents the next logical and consistent step in the evolution of our tried and tested Stromag GE coupling.

The result is a compact, robust and backlash-free coupling.

For both, stiff and resiliently mounted engines.

#### Applications:

Diesel gensets, E-drives, pumps and compressors

## Stromag TRI/TRI-R

Nominal Torque 1150 – 125,000 Nm



### Stromag TRI Coupling

The segmented lay-out enables short design and quick assembly. The segments absorb the axial and radial movements. Torsional vibrations are taken care of.

#### Stromag TRI-R Coupling

The coupling is best suitable for resiliently mounted engines. The elasticity of the ring element is determined by the rubber composition. The axial rigidity is adjustable by the perforation of membrane.

#### Application:

Generator systems, test benches, marine main and auxiliary drives

## Stromag GE

Nominal Torque 2000 – 270,000 Nm



### Stromag GE rubber/webbed coupling Powerful and compact

The segments of rubber and fabric characterize this coupling. The composite material provides an exceeding high power density with optimal damping. Under arduous conditions, too.

Can also be implemented as Cardan shaft coupling.

#### Application:

Rail and construction machine drives, diesel and gas systems, cement mills, pumps and compressors, marine main and auxiliary drives

www.stromag.com

P-8314-SG 02/18

## Stromag Facilities

### Europe

#### Germany

Hansastraße 120  
59425 Unna - Germany  
+49 (0) 23 03 102 0

*Clutches & Brakes, Couplings,  
Geared Cam Limit Switches, Discs,  
Wind Brakes*

Dessauer Str. 10  
06844 Dessau-Roßlau - Germany  
+49 (0) 340 2190 0

*Electromagnetic Clutches & Brakes*

#### France

Avenue de l'Europe  
18150 La Guerche sur L'Aubois - France  
+33 (0)2 48 80 72 72

*Disc Brakes & Drum Brakes*

#### Great Britain

Amphill Road  
Bedford, MK42 9RD - UK  
+44 (0)1234 350311

*Electromagnetic Clutches & Brakes,  
Industrial Caliper Brakes*

### North America

#### USA

31 Industrial Park Road  
New Hartford, CT 06057 - USA  
860-238-4783

*Electromagnetic Clutches & Brakes*

300 Indiana Highway 212  
Michigan City, IN 46360 - USA  
219-874-5248

*Couplings*

2800 Fisher Rd.  
Wichita Falls, TX  
940-723-3400

*Geared Cam Limit Switches,  
Industrial Caliper & Drum Brakes*

### Asia Pacific

#### China

T40B -5, No. 1765 Chuan Qiao Road  
Pudong 201206, Shanghai - China  
Tel +86 21-60580600

*Clutches & Brakes, Electromagnetic  
Clutches & Brakes, Couplings, Industrial  
Caliper & Drum Brakes, Discs, Geared  
Cam Limit Switches, Wind Brakes*

#### India

Gat No.: 448/14, Shinde Vasti, Nighoje  
Tal Khed, Pune- 410 501  
+91 2135 622100

*Clutches & Brakes, Electromagnetic  
Clutches & Brakes, Couplings, Industrial  
Caliper & Drum Brakes, Discs, Geared  
Cam Limit Switches, Wind Brakes*

## The Brands of Altra Industrial Motion

### Couplings

**Ameridrives**  
[www.ameridrives.com](http://www.ameridrives.com)

**Bibby Turboflex**  
[www.bibbyturboflex.com](http://www.bibbyturboflex.com)

**Guardian Couplings**  
[www.guardiancouplings.com](http://www.guardiancouplings.com)

**Huco**  
[www.huco.com](http://www.huco.com)

**Lamiflex Couplings**  
[www.lamiflexcouplings.com](http://www.lamiflexcouplings.com)

**Stromag**  
[www.stromag.com](http://www.stromag.com)

**TB Wood's**  
[www.tbwoods.com](http://www.tbwoods.com)

### Geared Cam Limit Switches

**Stromag**  
[www.stromag.com](http://www.stromag.com)

### Electric Clutches & Brakes

**Inertia Dynamics**  
[www.idicb.com](http://www.idicb.com)

**Matrix**  
[www.matrix-international.com](http://www.matrix-international.com)

**Stromag**  
[www.stromag.com](http://www.stromag.com)

**Warner Electric**  
[www.warnerelectric.com](http://www.warnerelectric.com)

### Linear Products

**Warner Linear**  
[www.warnerlinear.com](http://www.warnerlinear.com)

### Engineered Bearing Assemblies

**Kilian**  
[www.kilianbearings.com](http://www.kilianbearings.com)

### Heavy Duty Clutches & Brakes

**Industrial Clutch**  
[www.indclutch.com](http://www.indclutch.com)

**Twiflex**  
[www.twiflex.com](http://www.twiflex.com)

**Stromag**  
[www.stromag.com](http://www.stromag.com)

**Svendborg Brakes**  
[www.svendborg-brakes.com](http://www.svendborg-brakes.com)

**Wichita Clutch**  
[www.wichitaclutch.com](http://www.wichitaclutch.com)

### Belted Drives

**TB Wood's**  
[www.tbwoods.com](http://www.tbwoods.com)

### Gearing

**Bauer Gear Motor**  
[www.bauergears.com](http://www.bauergears.com)

**Boston Gear**  
[www.bostongear.com](http://www.bostongear.com)

**Delroyd Worm Gear**  
[www.delroyd.com](http://www.delroyd.com)

**Nuttall Gear**  
[www.nuttallgear.com](http://www.nuttallgear.com)

### Overrunning Clutches

**Formsprag Clutch**  
[www.formsprag.com](http://www.formsprag.com)

**Marland Clutch**  
[www.marland.com](http://www.marland.com)

**Stieber**  
[www.stieberclutch.com](http://www.stieberclutch.com)

Neither the accuracy nor completeness of the information contained in this publication is guaranteed by the company and may be subject to change in its sole discretion. The operating and performance characteristics of these products may vary depending on the application, installation, operating conditions and environmental factors. The company's terms and conditions of sale can be viewed at <http://www.altramotion.com/terms-and-conditions/sales-terms-and-conditions>. These terms and conditions apply to any person who may buy, acquire or use a product referred to herein, including any person who buys from a licensed distributor of these branded products.

©2018 by Stromag LLC. All rights reserved. All trademarks in this publication are the sole and exclusive property of Stromag LLC or one of its affiliated companies.



[www.stromag.com](http://www.stromag.com)

Hansastraße 120  
59425 Unna - Germany  
+49 2303 102-0

P-8314-SG 02/18