

MECHANICALLY OPERATED SENSOR VALVES

SERIES 3 AND 4

3/2 and 5/2-way
Ports G1/8, G1/4



The particular mechanical device allows these end-stroke valves to operate with very low actuating forces. Series 3 has been designed with a mechanical lever device which works in negative pressure. To increase sensitivity it is possible to add to the lever a steel extension with \varnothing 3 mm.

General Data

Construction	Spool-type (servocontrolled)
Valve group	3/2, 5/2 way/pos.
Materials	Aluminium body, stainless steel spool, NBR seals
Ports	G1/8, G1/4
Environmental temperature	0°C ÷ 60°C
Medium temperature	0°C ÷ 50°C
Operating pressure	See models
Fluid	Filtered air, without lubrication. If lubricated air is used, it is recommended to use ISO VG32 oil. Once applied the lubrication should never be interrupted.

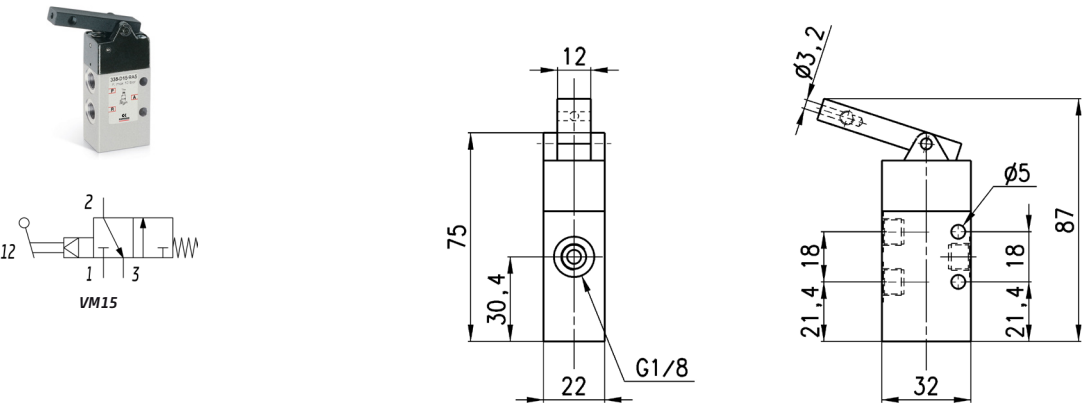
MECHANICALLY OPERATED SENSOR VALVES
SERIES 3 AND 4 - CODING EXAMPLES

Coding Example

3	3	8	-	D15	-	9A5
3	SERIES 3 4					
3	FUNCTION 3 = 3/2-way NC 4 = 3/2-way NO 5 = 5/2-way					
8	PORTS 8 = G1/8 4 = G1/4					
D15	ACTUATION D15 = Pressure drop/spring 015 = Pressure/spring 011 = Pressure/pressure					
9A5	DEVICES 9A5 = Lever sensor, spring return 194 = Plunger sensor, spring return 294 = Plunger sensor, bistable 195 = Lever/roller, spring return 295 = Lever/roller, bistable					

Valve Mod. 338-D15-9A5

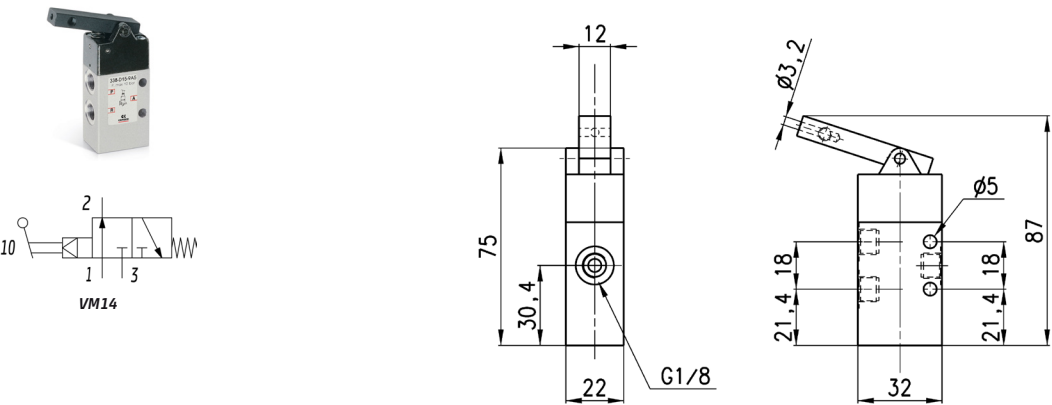
The function of the valve is indicated by the symbol when operating between 4 and 10 bar.



Mod.	Operating pressure [bar]	Flow rate [NL/min]	Actuating force at 6 bar [N]
338-D15-9A5	4 ÷ 10	700	2

Valve Mod. 348-D15-9A5

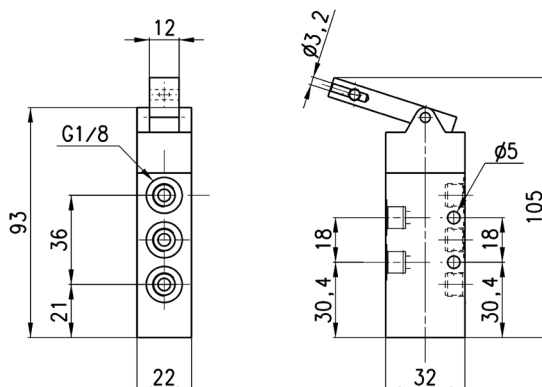
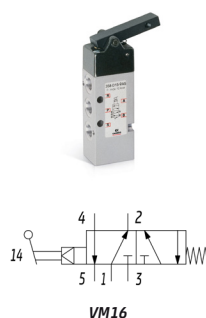
The function of the valve is indicated by the symbol when operating between 4 and 10 bar.



Mod.	Operating pressure [bar]	Flow rate [NL/min]	Actuating force at 6 bar [N]
348-D15-9A5	4 ÷ 10	700	2

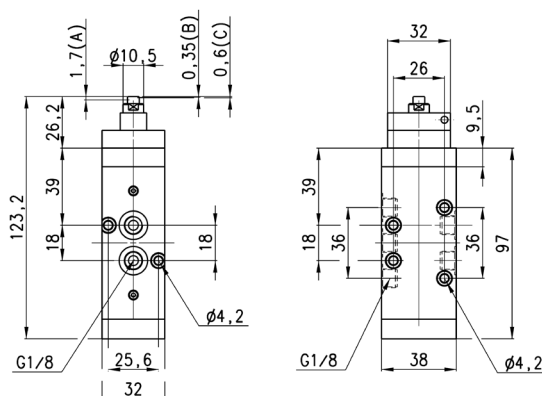
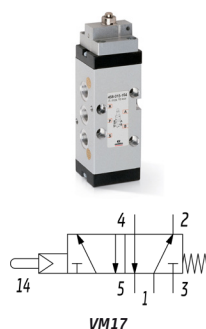
Valve Mod. 358-D15-9A5

The function of the valve is indicated by the symbol when operating between 4 and 10 bar.



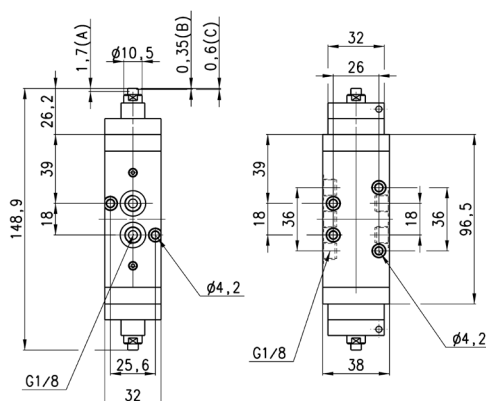
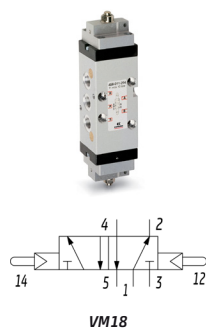
Mod.	Operating pressure [bar]	Flow rate [NL/min]	Actuating force at 6 bar [N]
358-D15-9A5	4 ÷ 10	700	2

Valve Mod. 458-015-194



Mod.	Operating pressure [bar]	Flow rate [NL/min]	Actuating force at 6 bar [N]
458-015-194	2,5 ÷ 8	650	6

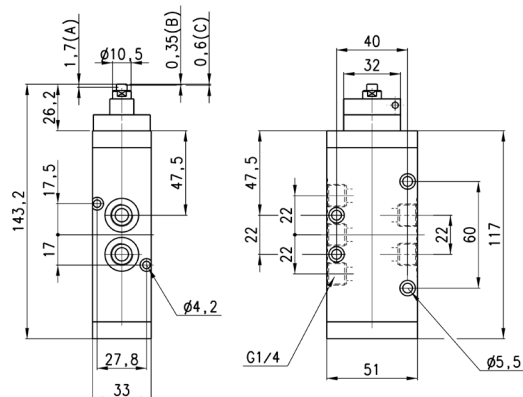
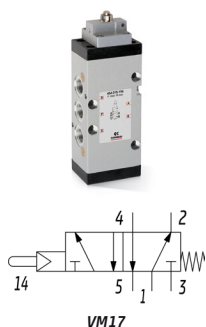
Valve Mod. 458-011-294



Mod.	Operating pressure [bar]	Flow rate [NL/min]	Actuating force at 6 bar [N]
458-011-294	2 ÷ 8	650	6

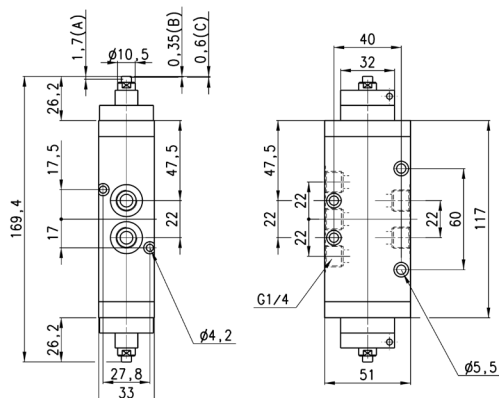
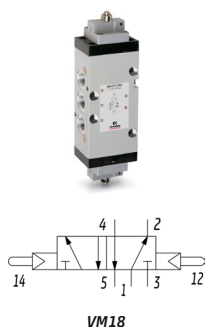
MECHANICALLY OPERATED SENSOR VALVES
SERIES 3 AND 4 - DIMENSIONS

Valve Mod. 454-015-194



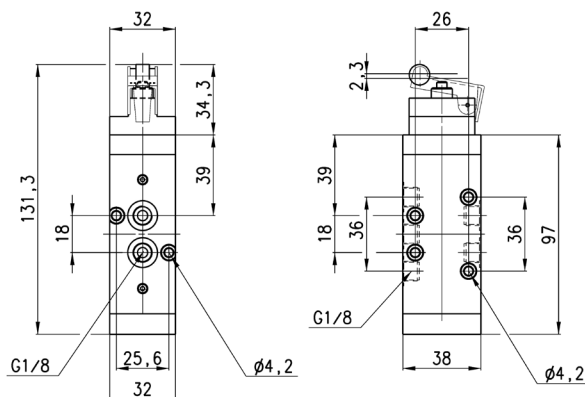
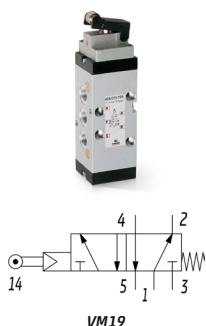
Mod.	Operating pressure [bar]	Flow rate [NL/min]	Actuating force at 6 bar [N]
454-015-194	2,5 ÷ 8	1250	6

Valve Mod. 454-011-294

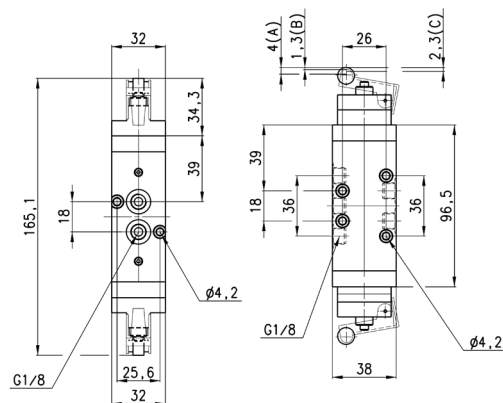
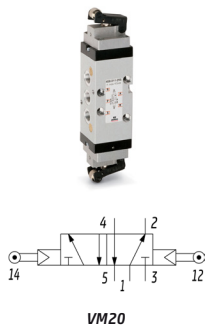


Mod.	Operating pressure [bar]	Flow rate [NL/min]	Actuating force at 6 bar [N]
454-011-294	2 ÷ 8	1250	6

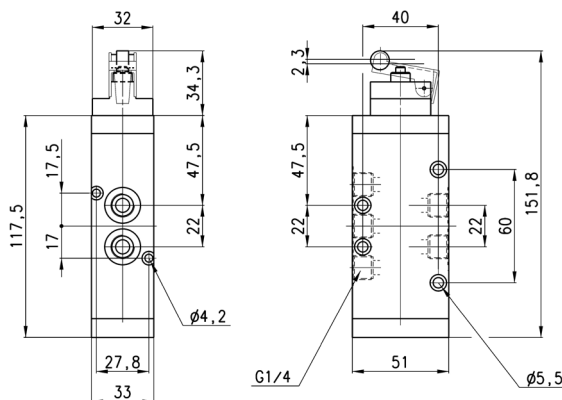
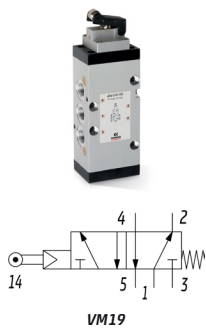
Valve Mod. 458-015-195



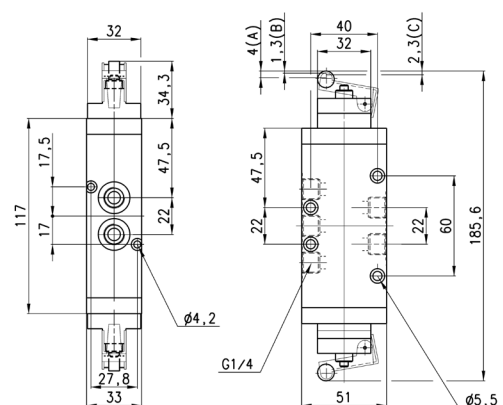
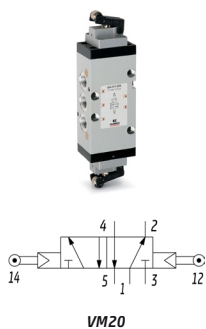
Mod.	Operating pressure [bar]	Flow rate [NL/min]	Actuating force at 6 bar [N]
458-015-195	2,5 ÷ 8	650	4

Valve Mod. 458-011-295


Mod.	Operating pressure [bar]	Flow rate [NL/min]	Actuating force at 6 bar [N]
458-011-295	2 ÷ 8	650	4

Valve Mod. 454-015-195


Mod.	Operating pressure [bar]	Flow rate [NL/min]	Actuating force at 6 bar [N]
454-015-195	2,5 ÷ 8	1250	4

Valve Mod. 454-011-295


Mod.	Operating pressure [bar]	Flow rate [NL/min]	Actuating force at 6 bar [N]
454-011-295	2 ÷ 8	1250	4