

Product overview

## LED industrial lighting

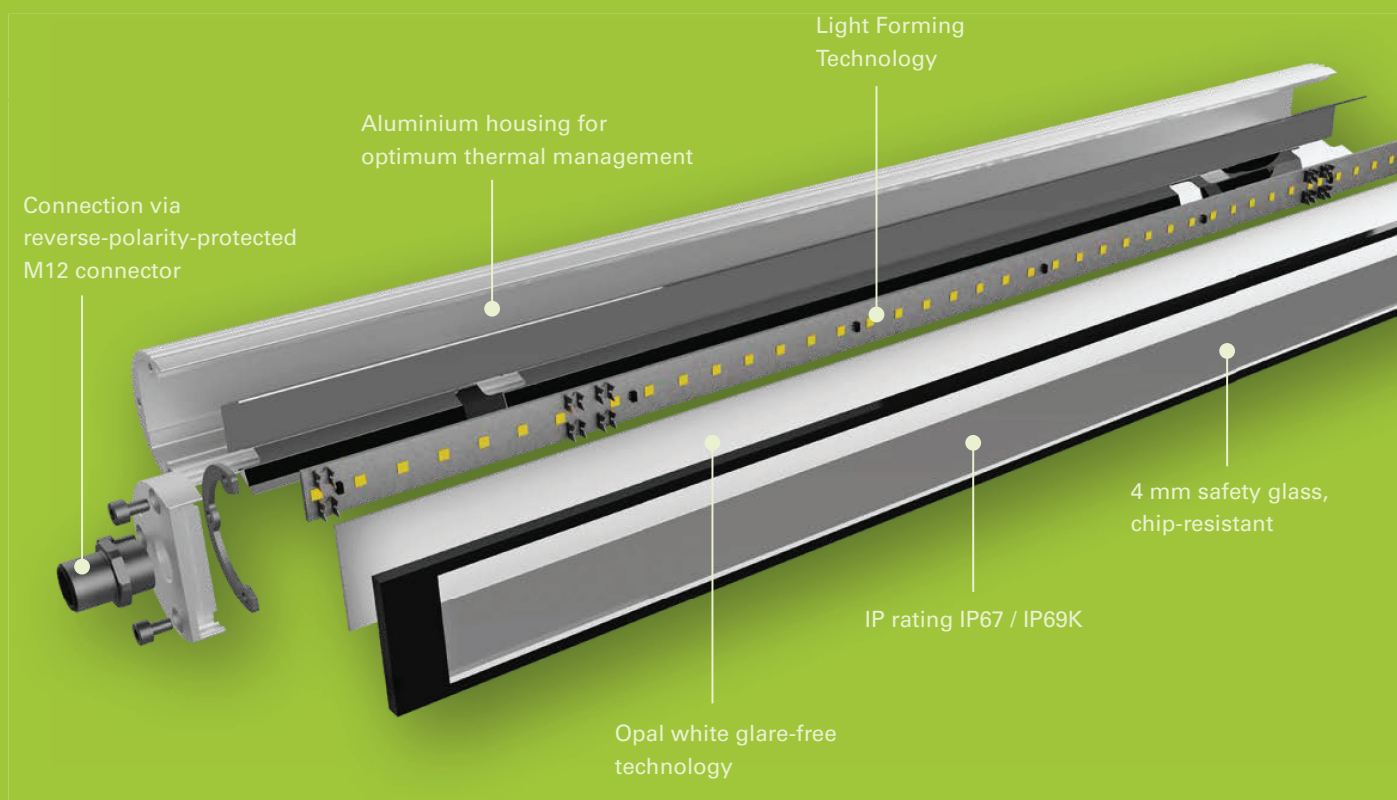
- For workplaces
- Machines & production plants
- Production lines
- Automation
- Food&Beverages & Pharmaceutical
- Logistics & building technology
- Dental, medical and chemical laboratories
- Jewellery & watch industry

**LIGHTING  
MADE  
IN GERMANY**

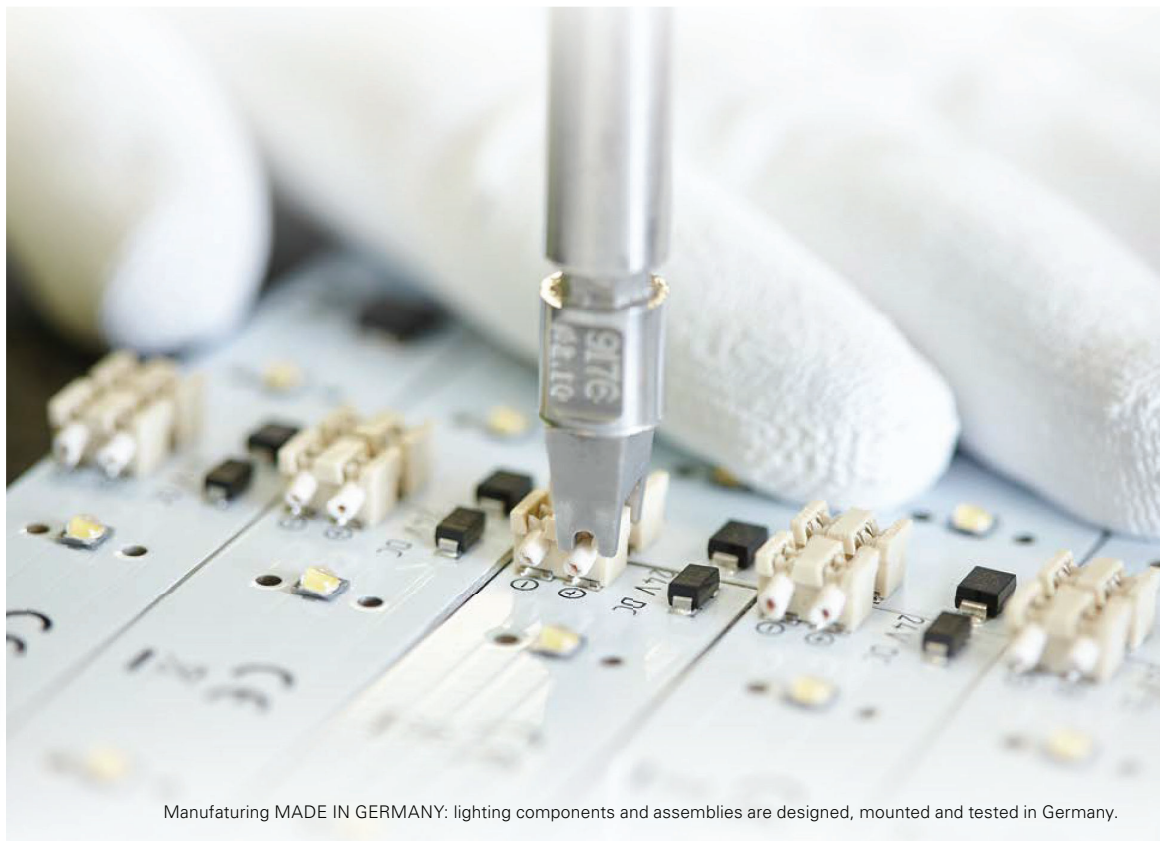
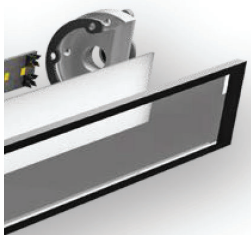


**Carbon neutral**  
Print product  
ClimatePartner.com/12518-1907-1001

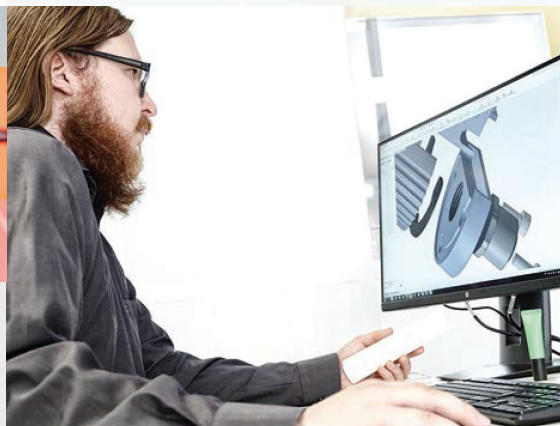
## LED2WORK – Intelligence in Light



We are one of the pioneers in the LED industry and rank among the leading manufacturers of highly-specialised LED lights for workplace applications, machines and production plants. The durability of our products distinguishes us, as well as our constant pursuit to increase our lights' added value with innovative ideas. Our target is to take the conscious decision to utilise the possibilities offered by the properties of light and to convert these into products.



Manufacturing MADE IN GERMANY: lighting components and assemblies are designed, mounted and tested in Germany.



## Made in Germany

The requirements to be satisfied by products used in the commercial environment are highly complex. Hence, we influence the entire process chain with our lights.

Starting from the initial idea, to construction that includes practical tests, and right up to serial production. The benefit: an extremely high-quality range of industrial lights that creates standards in every application segment.

- Intelligent thermal light management
- Use of high-quality LEDs. This way, there are almost no deviations in colour temperature and brightness value
- Very high colour rendition (at least > Ra 98)
- Maintenance-free and long life lights
- Quick and easy installation, replacement often possible on a 1:1 basis



## LED flex arm lights

The LED light CENALED SPOT Flexarm has a very flexible gooseneck and body that is also waterproof and oil-resistant, allowing integration into harsh production environments. In addition to the flexible arm variant, the CENALED SPOT is also available with an articulated arm and a swivel head variant.

### Special features:

- High-quality flex arm, designed for > 33,333 bending cycles
- Once positioned, the arm remains firmly fixed in the desired position

### Fields of application:

- Machines, manufacturing facilities, Assembly & workshop
- Dental, medical & chemical laboratories
- Jewellery & watch industry



## LED workplace and flex arm lights

LED articulated arm lights are characterised by a stable, spring-loaded aluminium arm with a 3D head joint. This means that the light can be moved with millimetre precision, yet without any significant effort. By using a 3D head joint, the workplace is perfectly illuminated at any desired position.

### Special features:

- Workplace lights with 2 different light colours or tunable white light changeable depending on time or situation
- Also possible with infinitely variable, flicker-free dimming
- Heat dissipation via the luminaire's rear - no risk of burns

### Fields of application:

- Assembly & workshop
- Dental, medical & chemical laboratories
- Electronic, jewellery & watch industry

Now also available with



Variable colour temperature with natural colour rendering and excellent colour quality

## LED workplace lighting

Our range of workplace lights is just as versatile as the variety of applications. Our workplace lights are sought after wherever excellent lighting conditions are required, and where precise, focussed light is crucial for quality. They enable good contrast vision with a very high degree of colour rendering. Ergonomic LED lights are available in different sizes and designs, depending on the respective application requirements.

- Homogeneous and shadow-free illumination of the work surface
- Glare and flicker-free lights
- Flicker-free dimming



## LED system lights

Demanding visual tasks require optimum workplace illumination. Regardless of whether in the electronics, automotive or metal industry, in assembly or in the workshop - LED system lights are indispensable wherever excellent lighting conditions are needed so as to satisfy high quality requirements.

### Special features:

- Compatible with many common system workstation lights using conventional technology
- UGR values < 22 according to the Industrial Workplace Directive
- Extremely wide product range available

### Fields of application:

- Machines, production plants & assembly lines
- Manual, testing and assembly workstations

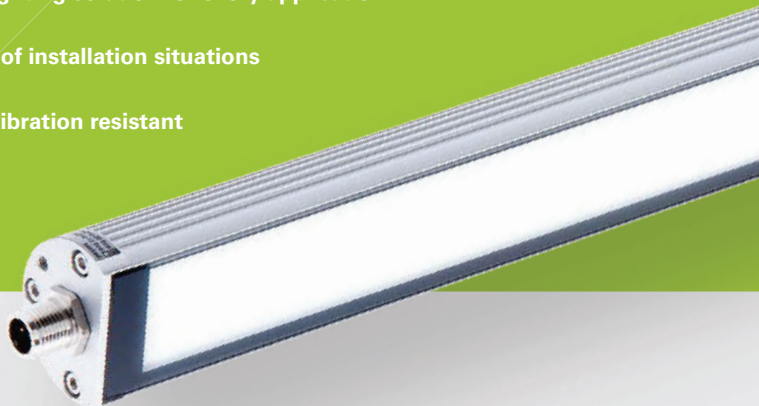
LED2WORK

5

## LED machine lighting

The hallmarks of our LED industrial lights are robust aluminium housings, glare-free safety glass, and best quality seals for a high degree of protection. They have been developed for the most demanding and adverse operating conditions. Extreme temperatures, oil, water, hot chippings, cooling lubricants and emulsions have no impact on service life or luminosity. As a specialist, our product portfolio provides the right lighting solution for every application.

- Can be integrated into the tightest of installation situations
- Extremely robust and resistant
- The machine lights are shock and vibration resistant
- Electrically linkable



### LED surface-mounted lights

Our LED surface-mounted lights are used for OEM original equipment as well as for retrofitting with all common machine types. Depending on the type of light, they are preferably used to illuminate large-volume plants and machines. The spotlights demonstrate their strength in confined or extremely limited spaces, as they can be placed in close proximity to the processing workpiece.

#### Special features:

- Wide range of applications
- Direct connection to the machines' supply voltage

#### Fields of application:

- Machines, production plants & assembly lines
- Vision systems

### LED integrated lights

LED recessed lights provide homogeneous, flicker-free and glare-free illumination in the machine rooms of machine tools. They are used in machine cladding or as recessed installation, depending on the design. This minimises interfering edges, preventing the accumulation of chippings or the like. This makes them ideal for use in the food industry as well as for camera-supported quality monitoring.

#### Special features:

- Suitable for very tight installation situations, also close to the workpiece
- Direct connection to the machines' supply voltage

#### Fields of application:

- Machines, production plants & assembly lines
- Vision systems
- Vehicle construction





## LED signal lights

In addition to illuminating large areas, signal lamps with optical displays ensure safer and more efficient processes. Integrated into the PLC control of the machine or plant system, they communicate standstill or disruption (red) and normal operation (green), among other things. Thus, with their RGB LEDs, the signal lamps realise a simple form of intelligent light, ideal for retrofitting machines or serial production systems.

### Special features:

- Various options for signalling machine and system statuses
- Additional efficient, daylight white SMD LEDs (product dependent)
- Homogeneous and low-shadow illumination of large areas

### Fields of application:

- Machines, production plants & assembly lines



LED2WORK

7



## LED mounted lights

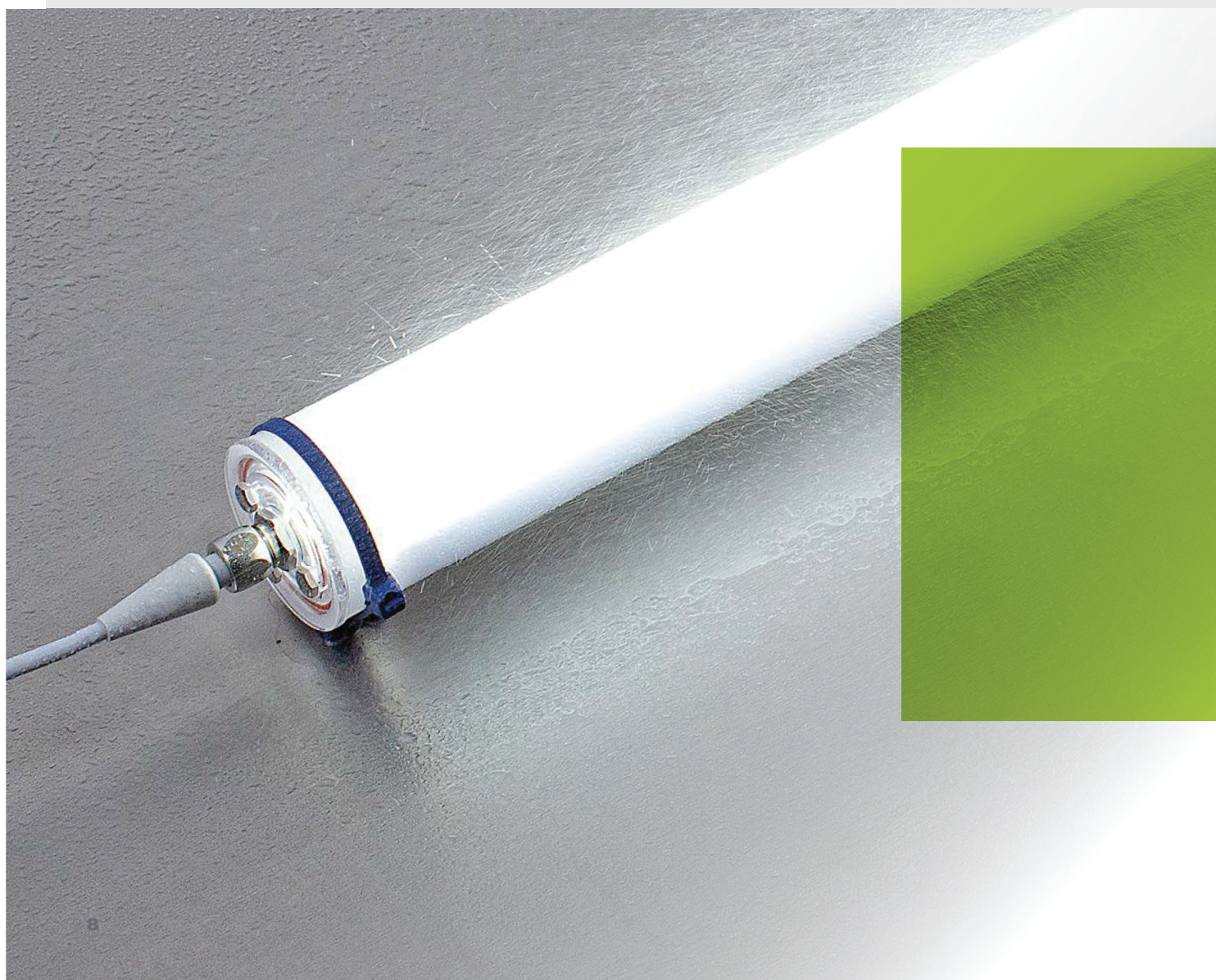
LED mounted lights for the industry are designed for use around technical systems, machines, or workstations in assembly lines. Sealed dust-tight and splash-proof, they are perfectly protected against external influences. Quick and easy installation is ensured by standardized electrical connections and variable mounting with matching luminaire holders.

### Special features:

- Simple and quick assembly
- Robust housing
- Wide range of variants

### Fields of application:

- Machines, production plants & assembly lines
- Wood processing machines



## LED tube lights

Depending on the type of application, LED tubular lights satisfy the high hygiene requirements of food and beverage and other hygiene-sensitive industries. They are apart from being resistant to many acids and alkalis. The lights satisfy the highest levels of protection classes for the classic industrial sector. The LED tubular lights are equipped with optimum thermal management, providing excellent heat dissipation and, thus, a long service life.

### Special features:

- Available in diameters of 50 mm and 70 mm
- According to the specifications: HACCP certified and FDA compliant materials
- Ecolab certification for the series INROLED\_50 Ecolab
- Variety of different uses

### Fields of application:

- Machines, production plants & assembly lines
- Food & pharmaceutical industry
- Warehouse logistics & building technology



## LED industrial lighting

Robustness and versatility characterises our industrial lights. They are resistant to a variety of chemicals and splinter-free, thanks to a polycarbonate tube or well-protected by borosilicate glass. LED industrial lights are also suitable for use in industrial image processing and ID systems. They combine high illumination intensity with homogeneous, flicker-free illumination. The camera's field of vision is optimally illuminated and, if required, the lights can also be dimmed via PWM.

- Thanks to FDA-compliant materials, the lights are hygienic and safe, also making them suitable for food & beverage sectors.
- Simple retrofitting options
- Available in safety extra-low voltage or mains voltage (depending on type)

## LED2WORK PRODUCT RANGE

### LED workplace lighting

#### LED FLEXIBLE ARM LIGHTS

CENALED SPOT  
CENALED FLOOD  
Flexarm



CENALED LENS  
Flexarm



#### LED ARTICULATED ARM LIGHTS

CENALED SPOT  
Gelenkarm



Articulated arm

LENSLED II



UNILED II



### LED machine lighting

#### SURFACE-MOUNTED LED LIGHTS

CENALED SPOT  
Gelenkkopf



FIELDLED EVO



LEANLED II



TOPLED  
CENALED SPOT



TUBELED\_40  
Element



TUBELED\_25



### Signal and hybrid lights

#### LED TUBE LIGHTS

INROLED\_50 Ecolab



INROLED\_70



#### LED LIGHTS FOR ILLUMINATION AND VISUAL SIGNALLING

DOMELED  
DOMELED IO-Link



INROLED\_50 Ecolab RGB-W



SIGNALED II RGB  
SIGNALED II RGB-W



## LED SYSTEM LIGHTS

UNILED II  
TUNABLE WHITE



PROFILED



PROFILED Zugpendel



Pulling pendulum

SYSTEMLED EVO



UNILED SL DC



## LED RECESSED LIGHTS

TUBELED\_40 II



TUBELED\_70 EVO



VARILED II



FIELDLED EVO



CENALED SPOT



TUBELED\_40 II  
Integrated



TUBELED\_40 II RGB-W



TUBELED\_25 RGB-W  
TUBELED\_25 RGB-W IO-Link



UNILED SL RGB-W



TUBELED\_40 II  
Integrated RGB-W



You can get all available lights in  
our B2B online shop:

**shop.led2work.com**

Would you like a consultation?

Get in touch with us:

**sales@led2work.com**

**+49 7231 44920-10**

**LED2WORK**  
INTELLIGENCE IN LIGHT

**LED2WORK GmbH**  
Stuttgarter Str. 13A  
75179 Pforzheim | Germany  
T +49 7231 44920-00  
info@led2work.com



**www.led2work.com**  
**shop.led2work.com**

 **Carbon neutral**  
Print product  
ClimatePartner.com/12518-1907-1001

