

SCANNING LASER RANGE FINDER

UST-10LX UST-20LX

Features

- High speed
- Long distance
- Wide range
- Compact and lightweight

Applications

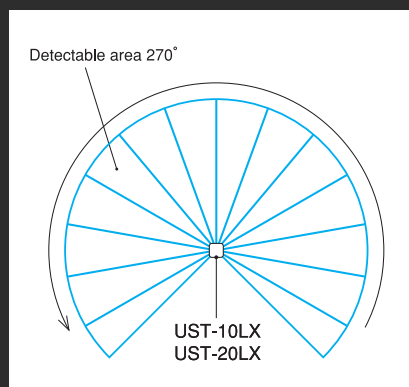
- Service robot
- Research robot
- Medical robot



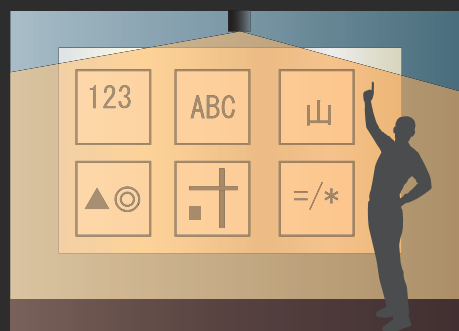
Specifications

Part No.	UST-10LX	UST-10LX-H01	UST-20LX	UST-20LX-H01
Power supply	12VDC / 24VDC (10-30VDC ripple: 10% or less)			
Consumption current	150mA or less (450mA when switching on)			
Light source	Semiconductor laser (905nm) , class 1			
Distance	0,06-10m (White sheet) 0,06-4m (Black sheet with 10% reflectivity) Max. detection distance : 30m		0,06-20m (White sheet) 0,06-8m (Black sheet with 10% reflectivity) Max. detection distance : 60m	
Distance accuracy	±40mm			
Repeatability	$\sigma < 30\text{mm}$			
Scanning angle	270 degrees			
Scanning time	25ms per scan			
Angular resolution	0.25°	0.125°	0.25°	0.125°
Start-up time	10sec or less			
Interface	Ethernet 100BASE-TX			
Ambient temperature	-10 to 50 °C			
Protective structure	IP65			
Weight	130g (excluding cables)			

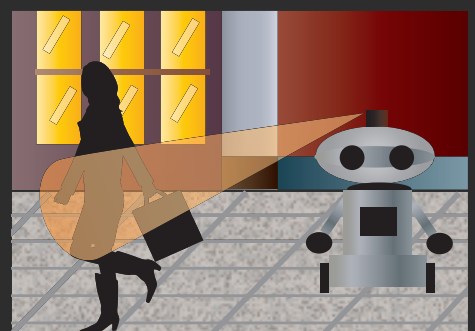
System structure



Applications



- Interactive media systems



- Environment recognition for autonomous service robots