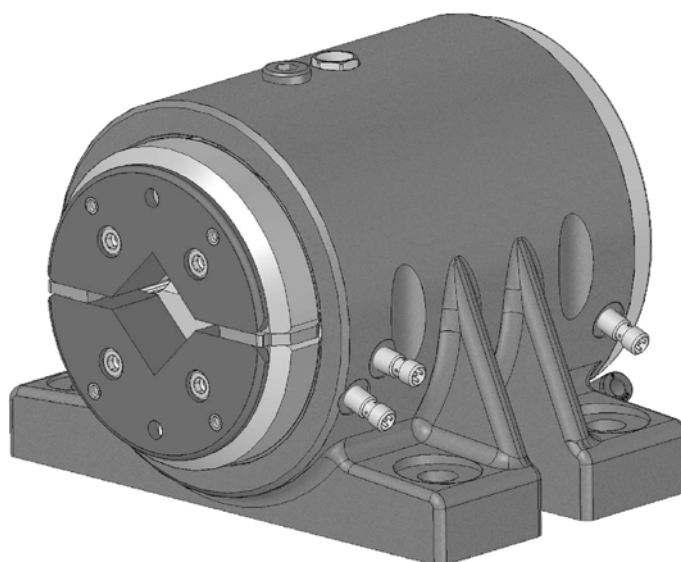


## 4.50 Boschert-Chuck P30



<b>P30 STO</b>	<b>Boschert</b> pneumatic chuck, foot mounted without shaft end
<b>P30 STW</b>	<b>Boschert</b> pneumatic chuck, foot mounted with shaft end
<b>P30 FLO</b>	<b>Boschert</b> pneumatic chuck, flange mounted without shaft end
<b>P30 FLW</b>	<b>Boschert</b> pneumatic chuck, flange mounted with shaft end



<b>Standard Square bar:</b>	30 mm	(1.1811")
<b>max. beam weight:</b>	800 kg	(1764 lbs)
<b>max. torque:</b>	180 Nm	(132.7 ft·lb)

**Please note:**

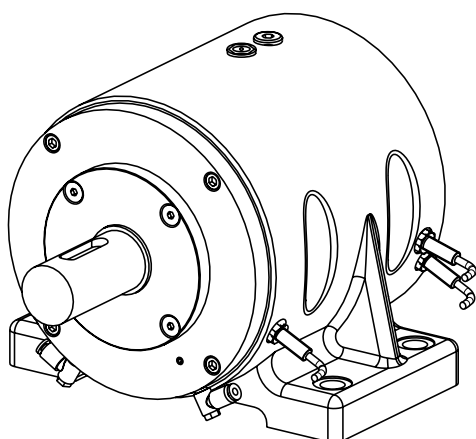
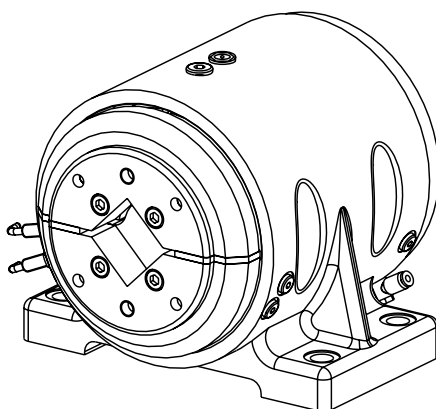
For smaller square dimensions, the data are reduced.

		<b>Info</b>
<b>Type</b>	VT	<a href="#">4.74</a>
<b>Journal shaft type VT</b>	VT2 / VT7	<a href="#">4.53</a>
<b>Shaft end</b>	standard	<a href="#">4.53</a>
<b>Options:</b>	proximity sensor	<a href="#">4.53</a>
<b>Add. parts</b>	brakes	<a href="#">6.00</a>
	clutches	<a href="#">7.0</a>

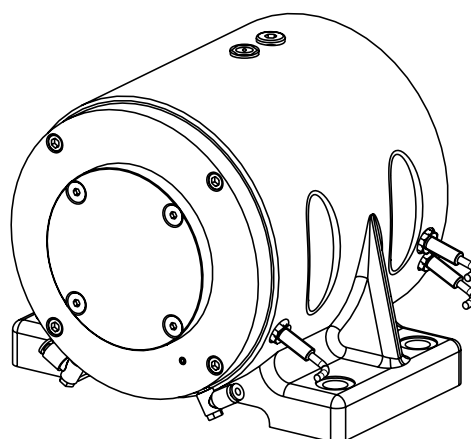
# Boschert-Chuck P30 foot mounted



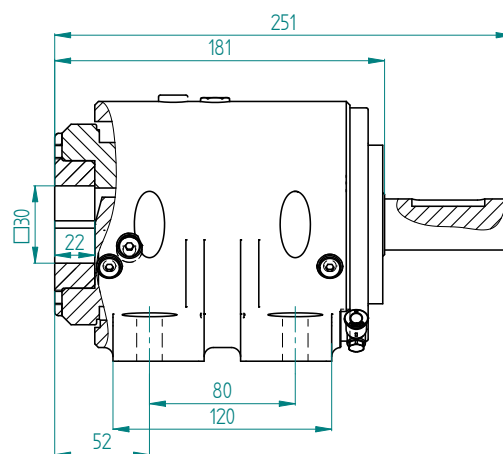
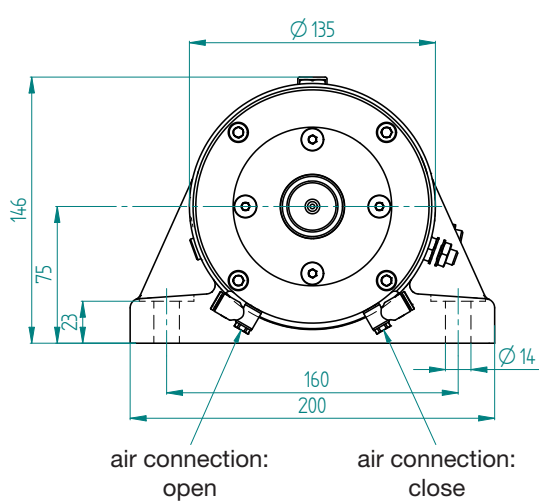
Boschert-Chuck P30



STW P30  
chuck with shaft end



STO P30  
chuck without shaft end

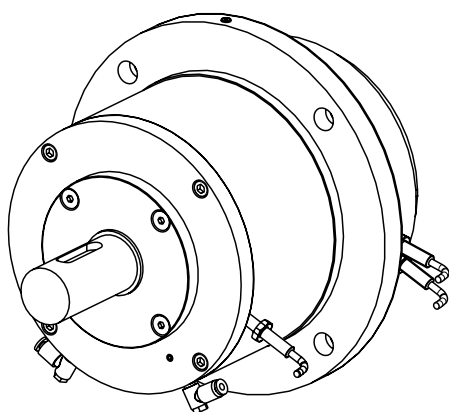
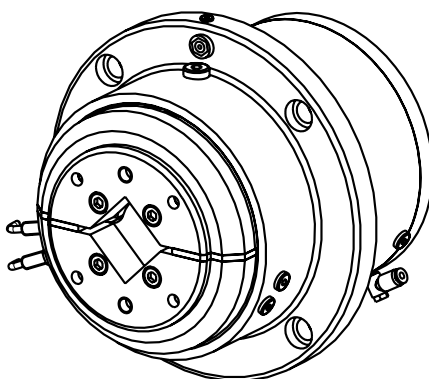


[Shaft end details Page 4.53](#)

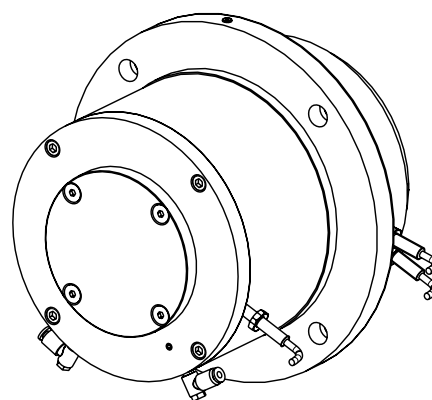
# Boschert-Chuck P30 flange mounted



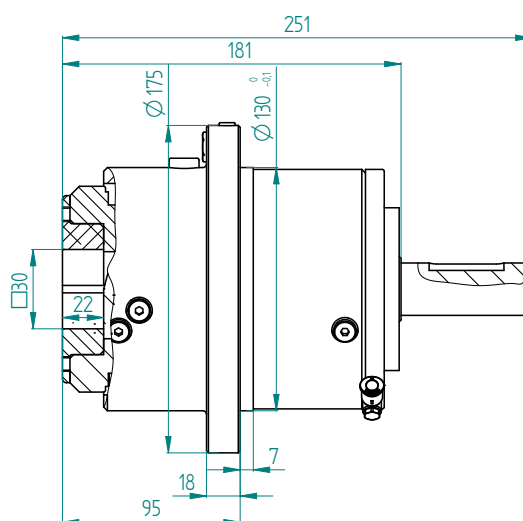
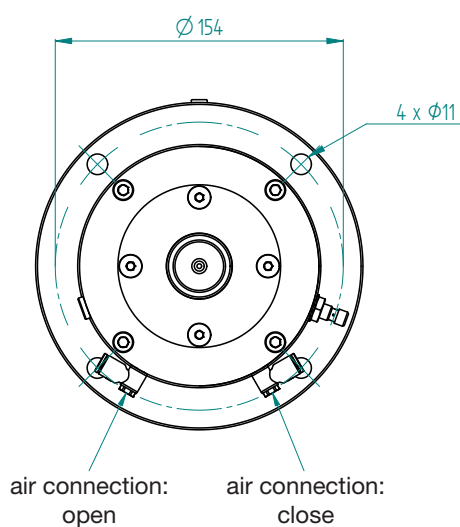
Boschert-Chuck P30



FLW P30  
chuck with shaft end



FLO P30  
chuck without shaft end



[Shaft end details Page 4.53](#)

## Journal shaft type



VT 2

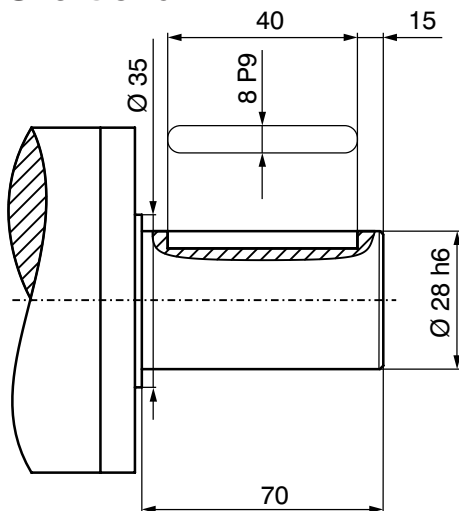
[Info 11.10](#)



VT7

[Info 11.12](#)

## Shaft end

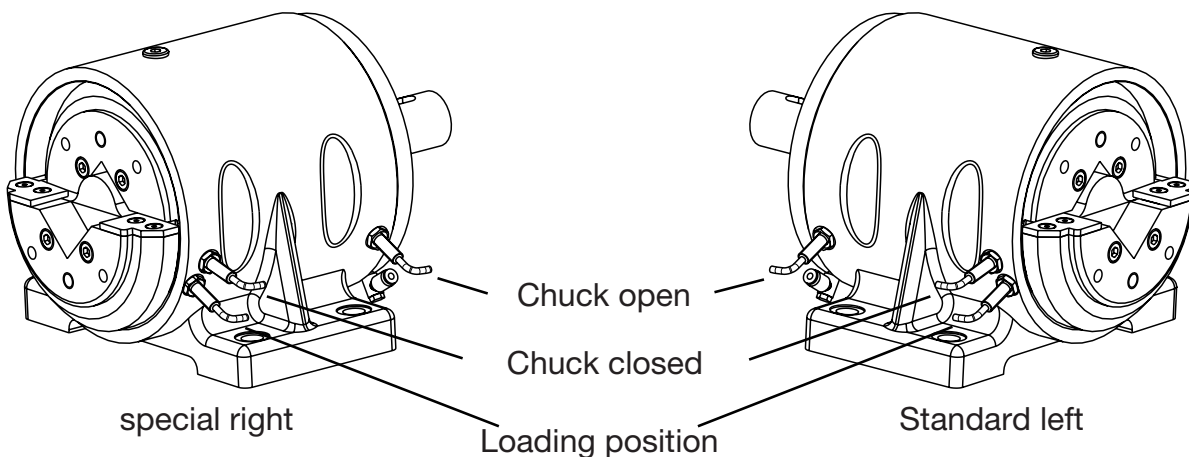


Standard shaft end

Special shaft ends per customer request

Max. shaft-dia.: Ø 35 mm  
(special shaft without stop)

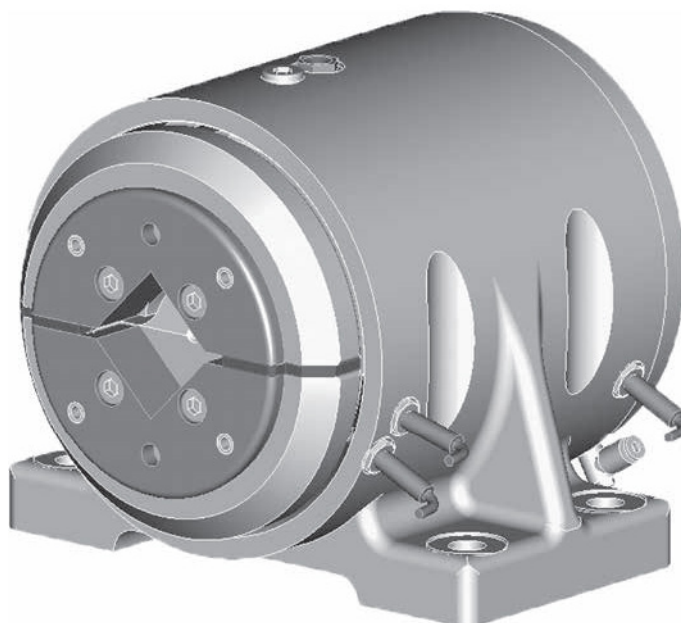
## Proximity sensor






## 4.60 Boschert-Chuck P40



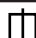
- P40 STO** *Boschert* pneumatic chuck, foot mounted without shaft end  
**P40 STW** *Boschert* pneumatic chuck, foot mounted with shaft end  
**P40 FLO** *Boschert* pneumatic chuck, flange mounted without shaft end  
**P40 FLW** *Boschert* pneumatic chuck, flange mounted with shaft end



**Standard Square bar:**  40 mm (1.5748")  
**max. beam weight:**  1600 kg (3530 lbs)  
**max. torque:**  350 Nm (258.1 ft·lb)

**Please note:**

For smaller square dimensions, the data are reduced.

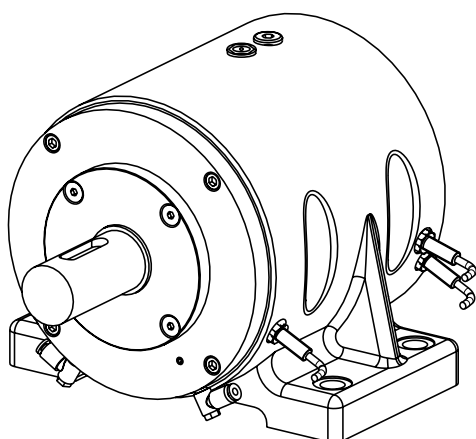
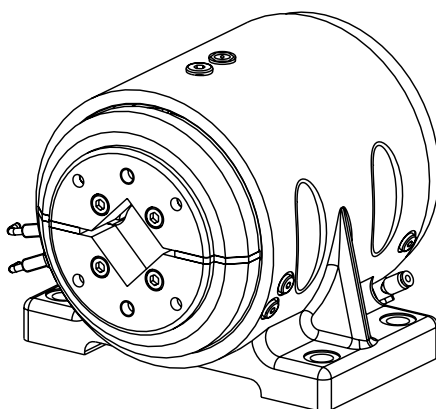
	max. Beam weight	max. torque
 30 mm	1200 kg (2650 lbs)	250 Nm (184.4 Ft·lb)

		Info
Type	VT	<a href="#">4.74</a>
Journal shaft type VT	VT2 / VT7	<a href="#">4.63</a>
Shaft end	standard	<a href="#">4.63</a>
Options:	proximity sensor	<a href="#">4.63</a>
Add. parts	brakes	<a href="#">6.00</a>
	clutches	<a href="#">7.0</a>

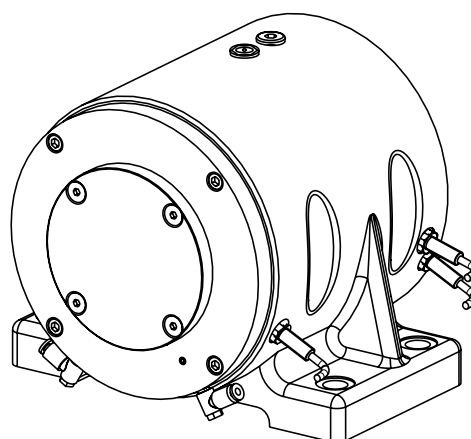
# Boschert-Chuck P40 foot mounted



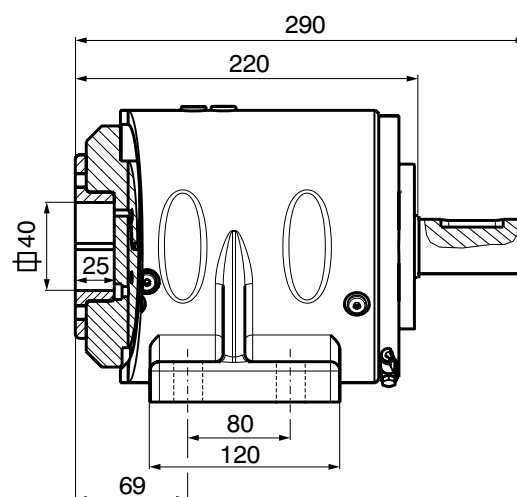
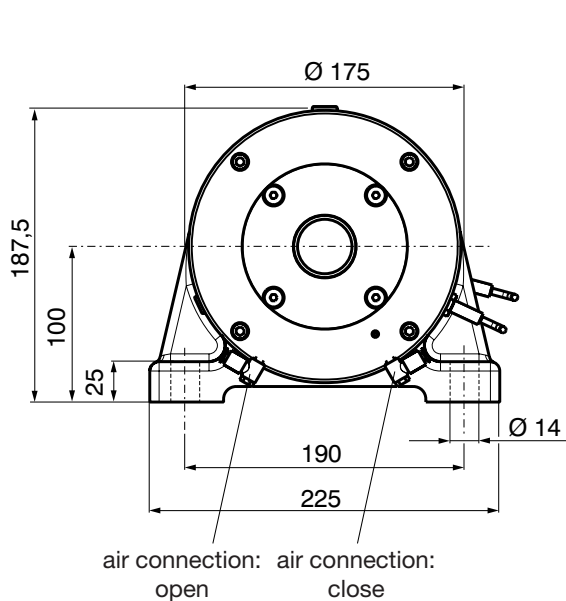
Boschert-Chuck P40



STW P40  
chuck with shaft end



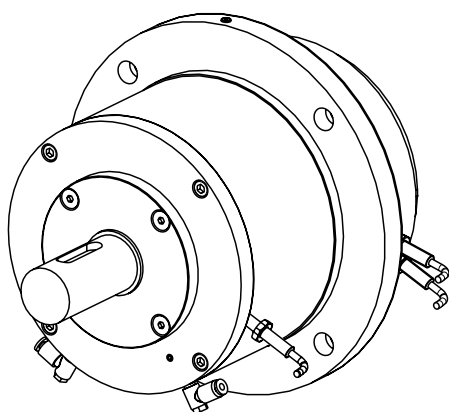
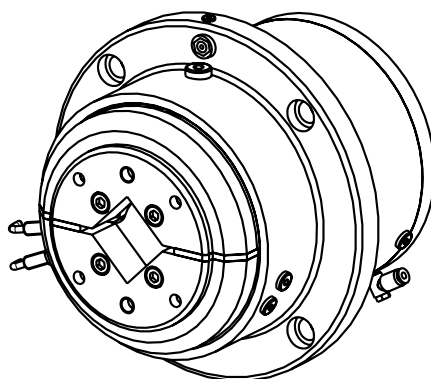
STO P40  
chuck without shaft end



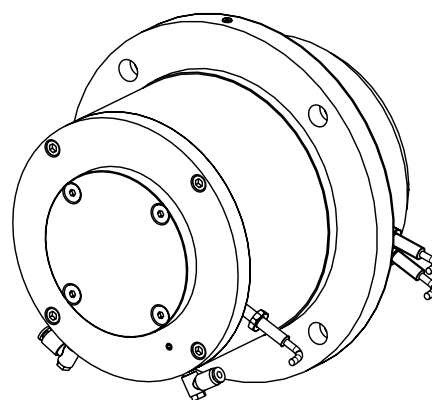
[Shaft end details Page 4.63](#)

# Boschert-Chuck P40 flange mounted

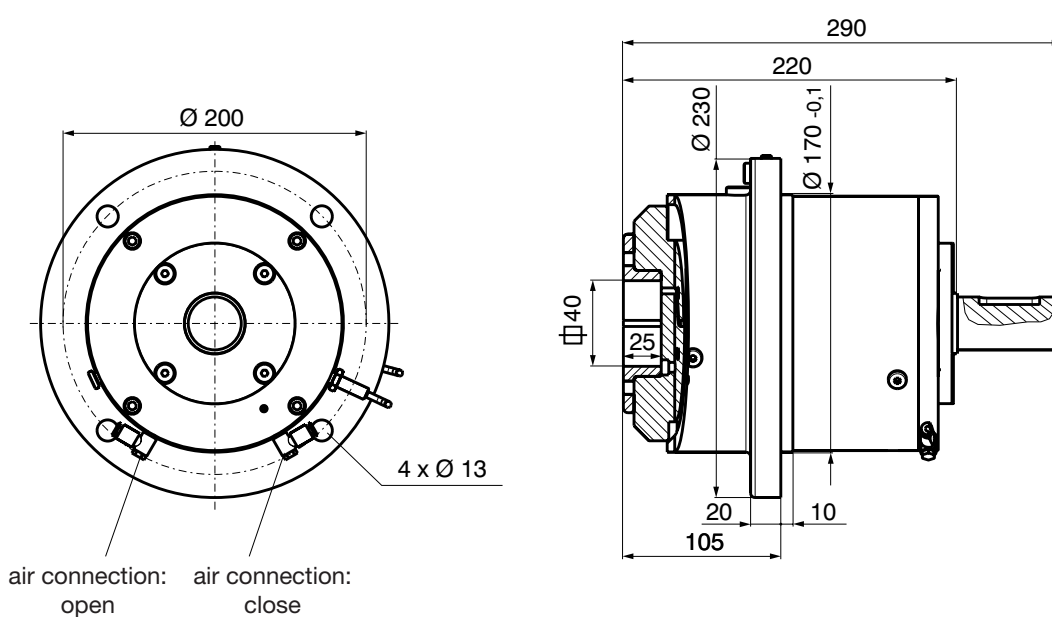
Boschert-Chuck P40



FLW P40  
chuck with shaft end



FLO P40  
chuck without shaft end



[Shaft end details Page 4.63](#)



## Journal shaft type



VT 2

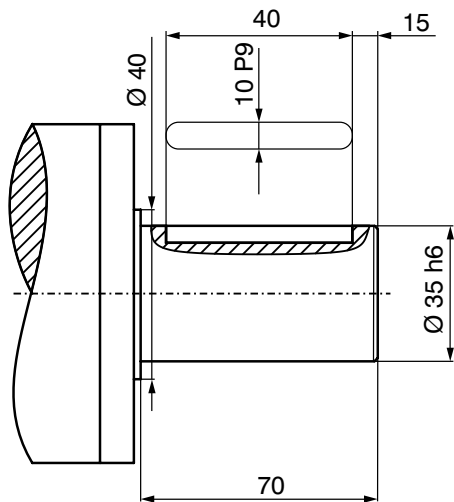
[Info 11.10](#)



VT7

[Info 11.12](#)

## Shaft end

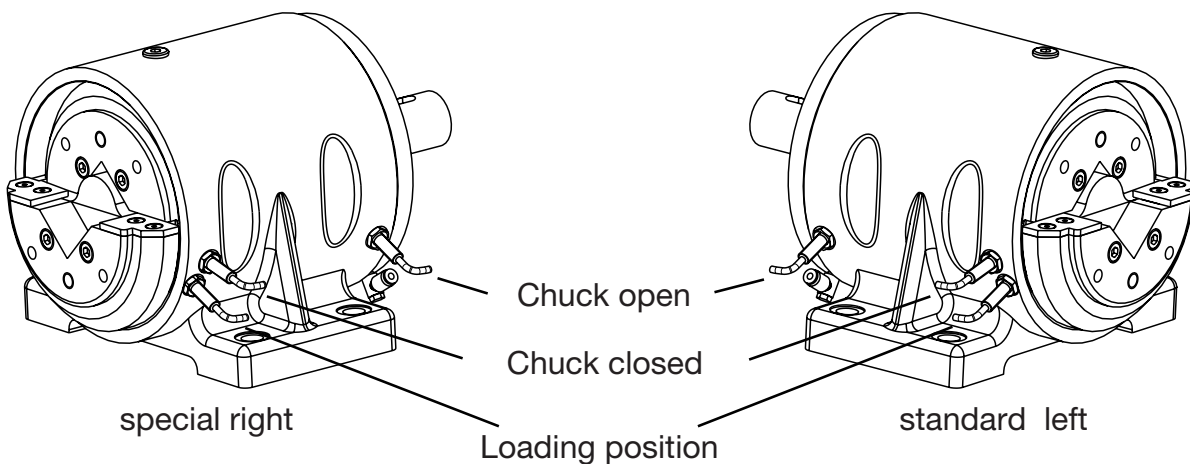


Standard shaft end

Special shaft ends per customer request

Max. shaft-dia.: Ø 40 mm  
(special shaft without stop)

## Proximity sensor

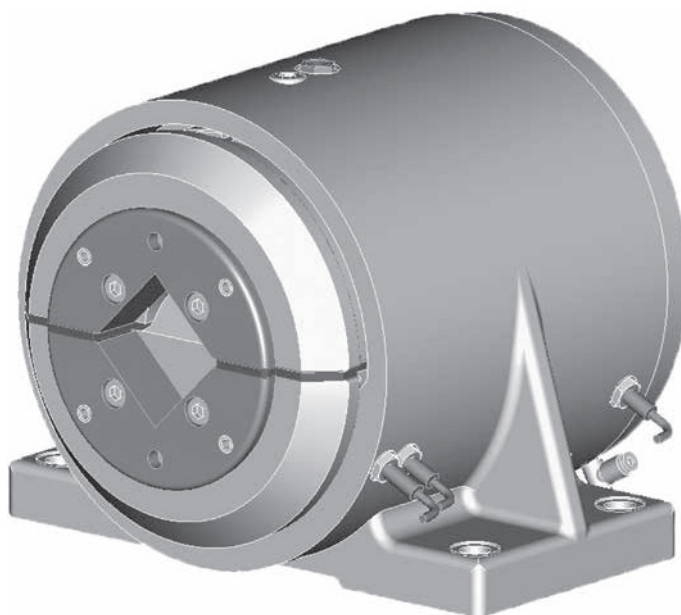




## 4.70 Boschert-Chuck P50



<b>P50 STO</b>	<b>Boschert</b> pneumatic chuck, foot mounted without shaft end
<b>P50 STW</b>	<b>Boschert</b> pneumatic chuck, foot mounted with shaft end
<b>P50 FLO</b>	<b>Boschert</b> pneumatic chuck, flange mounted without shaft end
<b>P50 FLW</b>	<b>Boschert</b> pneumatic chuck, flange mounted with shaft end



<b>Standard Square bar:</b>	50 mm	(1.9685")
<b>max. beam weight:</b>	2800 kg	(6170 lbs)
<b>max. torque:</b>	1100 Nm	(800.1 ft·lb)

### Please note:

For smaller square dimensions, the data are reduced.

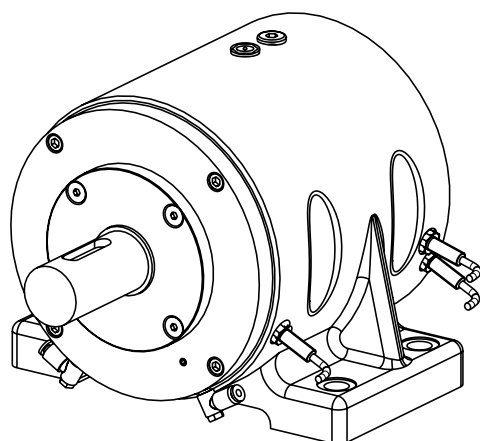
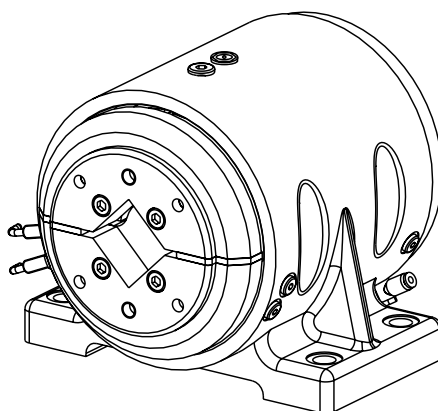
	max. Beam weight	max. torque
40 mm	2000 kg (4410 lbs)	700 Nm (516.3 ft·lb)
45 mm	2400 kg (5290 lbs)	900 Nm (516.3 Ft·lb)

Type	Info
VT	<a href="#">4.74</a>
<b>Journal shaft type VT</b>	VT2 / VT7 <a href="#">4.73</a>
<b>Shaft end</b>	standard <a href="#">4.73</a>
<b>Options:</b>	proximity sensor <a href="#">4.73</a>
<b>Add. parts</b>	brakes <a href="#">6.00</a>
	clutches <a href="#">7.0</a>

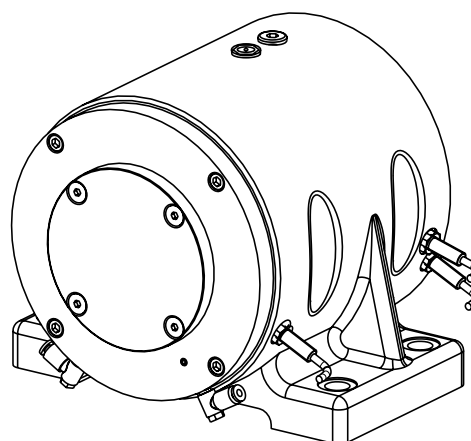
# Boschert-Chuck P50 foot mounted



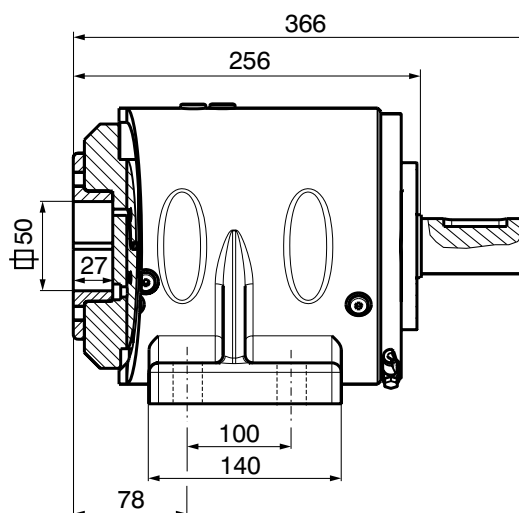
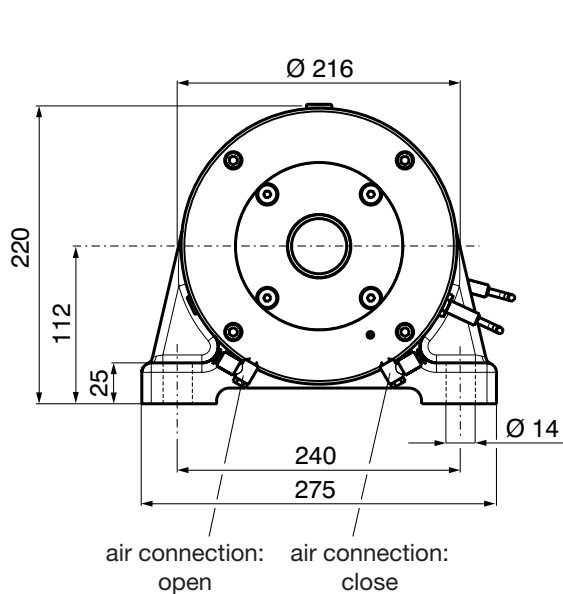
Boschert-Chuck P50



STW P50  
chuck with shaft end



STO P50  
chuck without shaft end

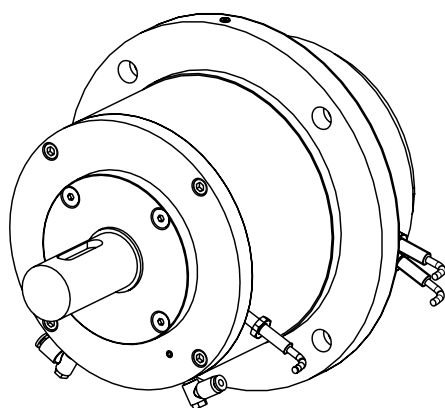
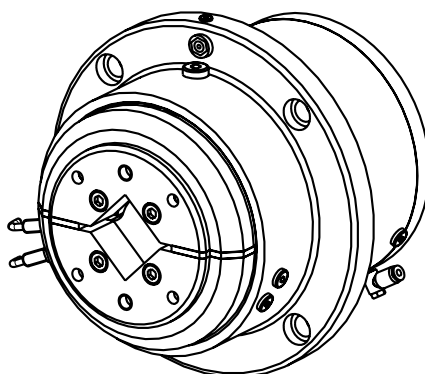


[Shaft end details Page 4.73](#)

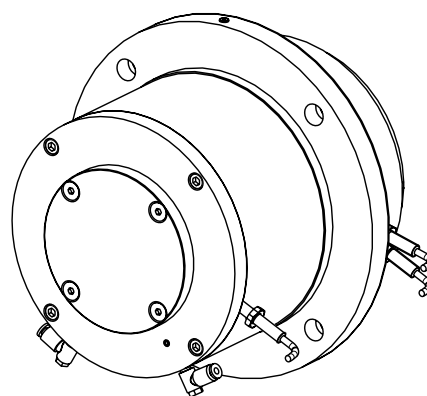
# Boschert-Chuck P50 flange mounted



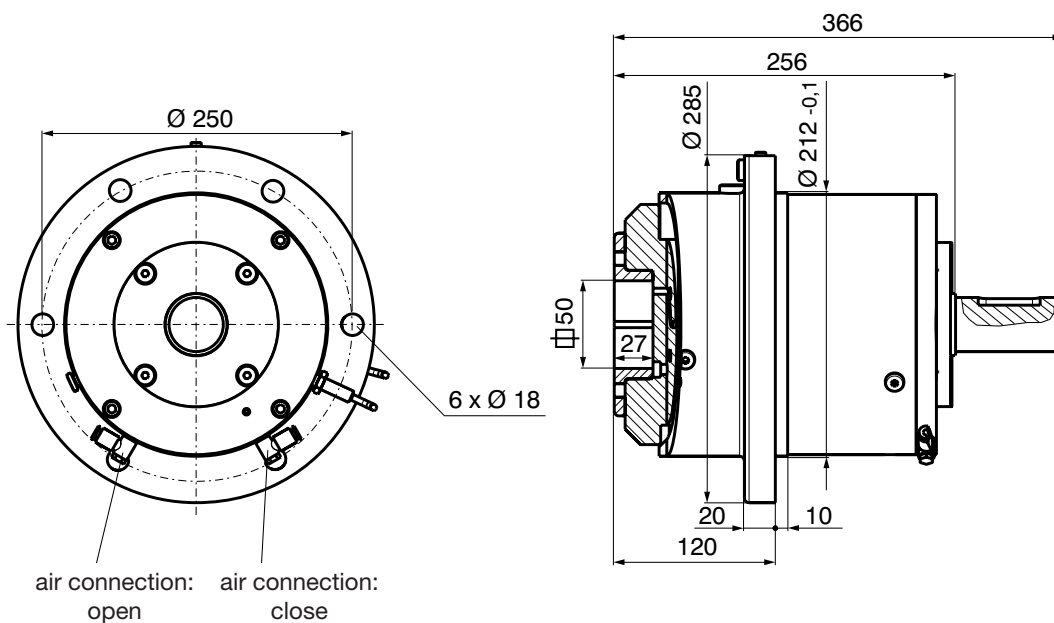
Boschert-Chuck P50



FLW P50  
chuck with shaft end



FLO P50  
chuck without shaft end



[Shaft end details Page 4.73](#)

## Journal shaft type



VT 2

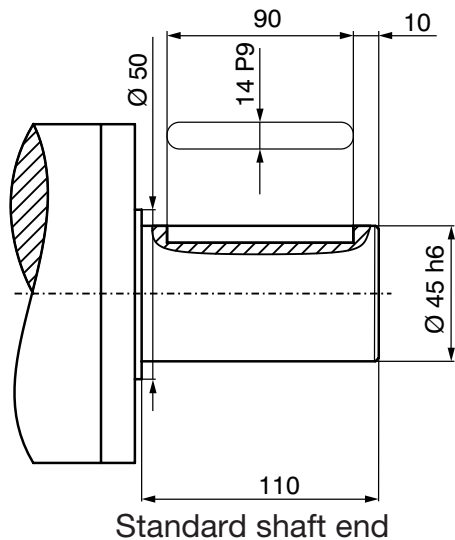
[Info 11.10](#)



VT7

[Info 11.12](#)

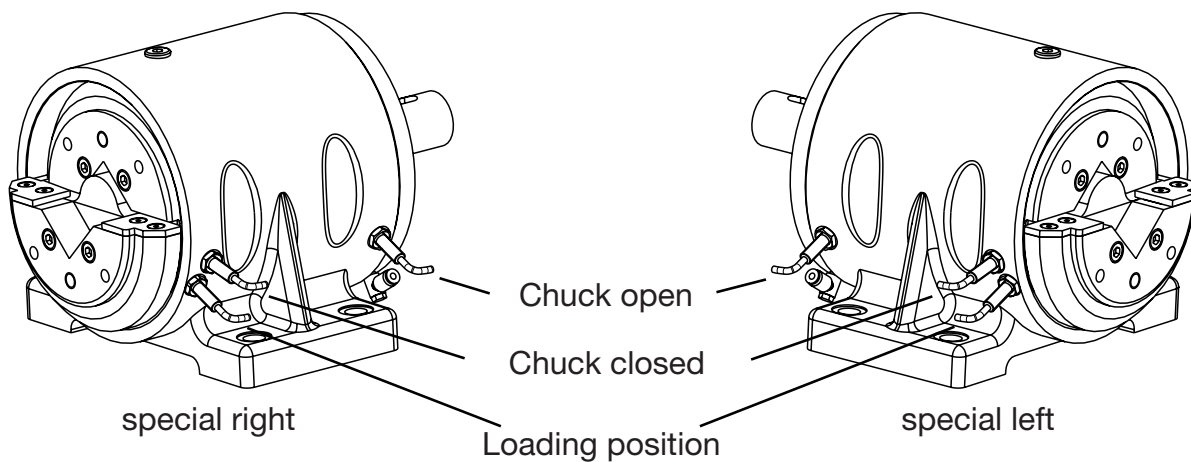
## Shaft end

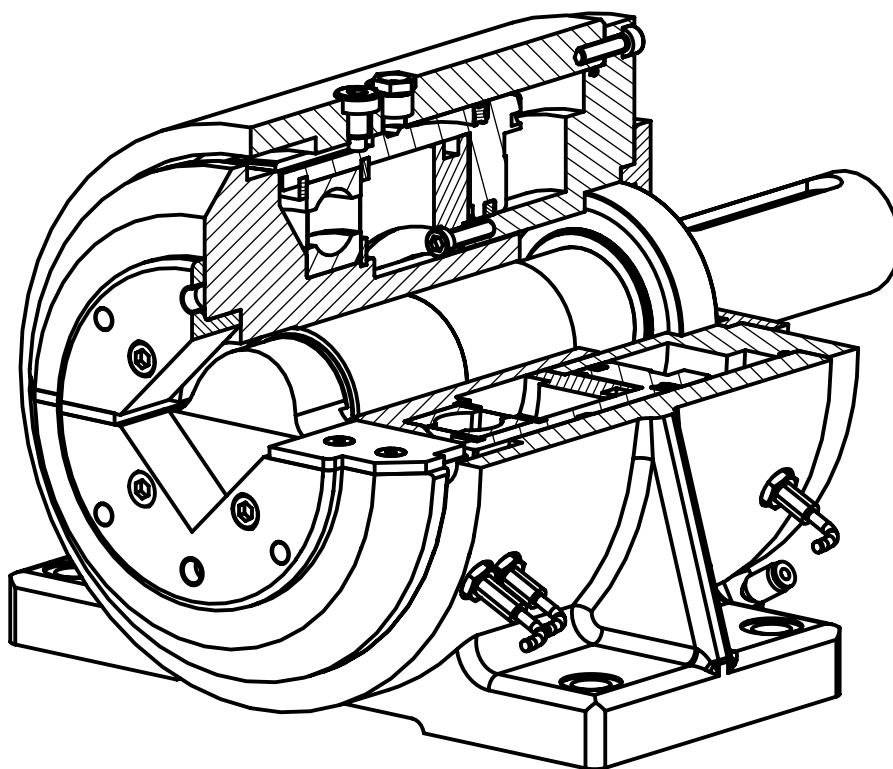


Special shaft ends per customer request

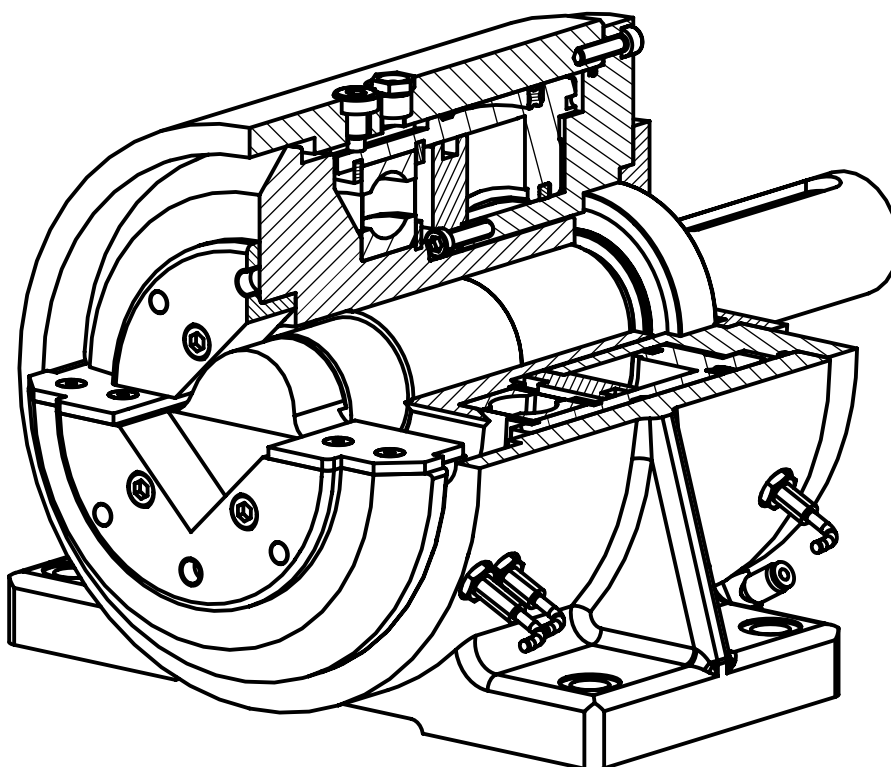
Max. shaft-dia.: Ø 50 mm  
(special shaft without stop)

## Proximity sensor





P-Chuck closed



P-Chuck open